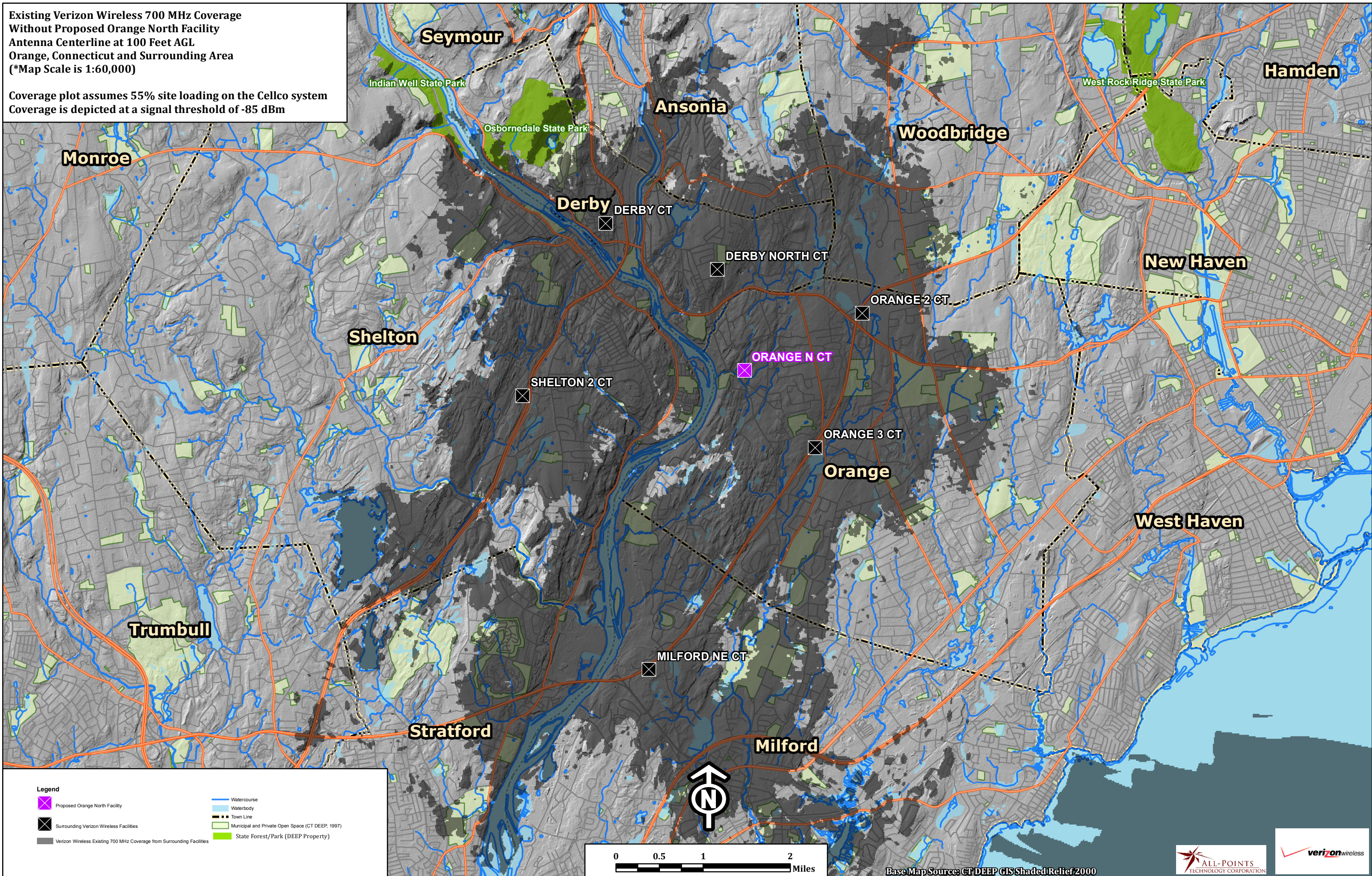


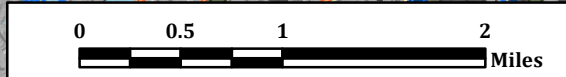
Existing Verizon Wireless 700 MHz Coverage
 Without Proposed Orange North Facility
 Antenna Centerline at 100 Feet AGL
 Orange, Connecticut and Surrounding Area
 (*Map Scale is 1:60,000)

Coverage plot assumes 55% site loading on the Cellco system
 Coverage is depicted at a signal threshold of -85 dBm



Legend

-  Proposed Orange North Facility
-  Surrounding Verizon Wireless Facilities
-  Verizon Wireless Existing 700 MHz Coverage from Surrounding Facilities
-  Watercourse
-  Waterbody
-  Town Line
-  Municipal and Private Open Space (CT DEEP, 1997)
-  State Forest/Park (DEEP Property)



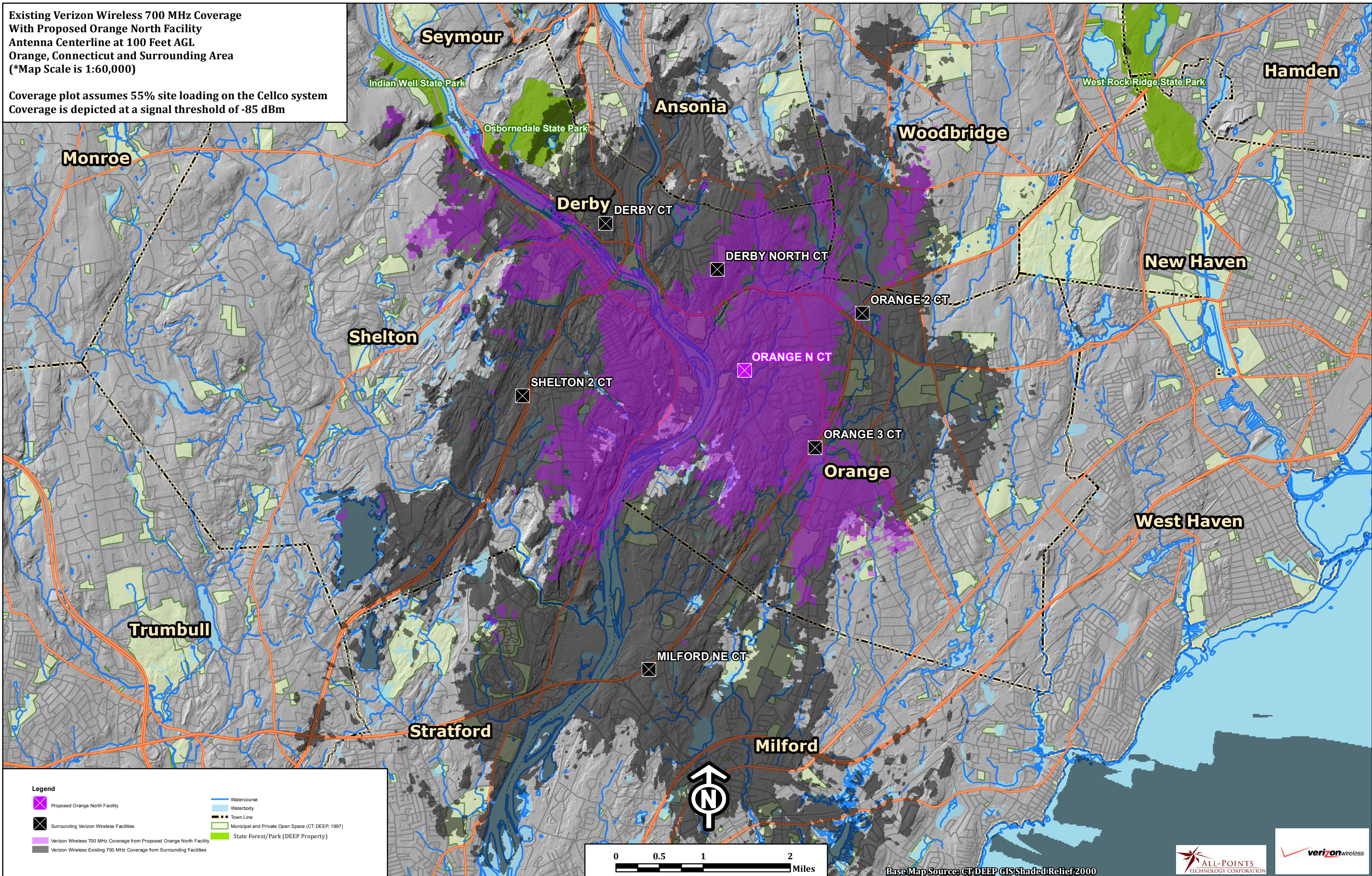
Base Map Source: CT DEEP GIS Shaded Relief 2000

Path: C:\All_Points_Tech\Projects\Client\Verizon\Orange\GIS\Maps\700WO_Coverage_Map.mxd



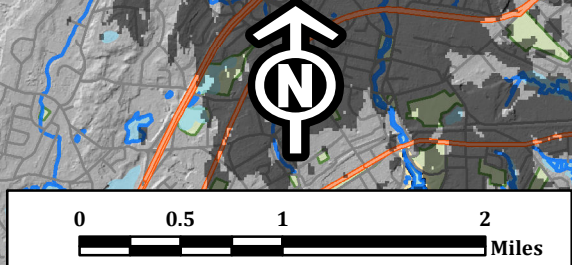
Existing Verizon Wireless 700 MHz Coverage
 With Proposed Orange North Facility
 Antenna Centerline at 100 Feet AGL
 Orange, Connecticut and Surrounding Area
 (*Map Scale is 1:60,000)

Coverage plot assumes 55% site loading on the Cellco system
 Coverage is depicted at a signal threshold of -85 dBm



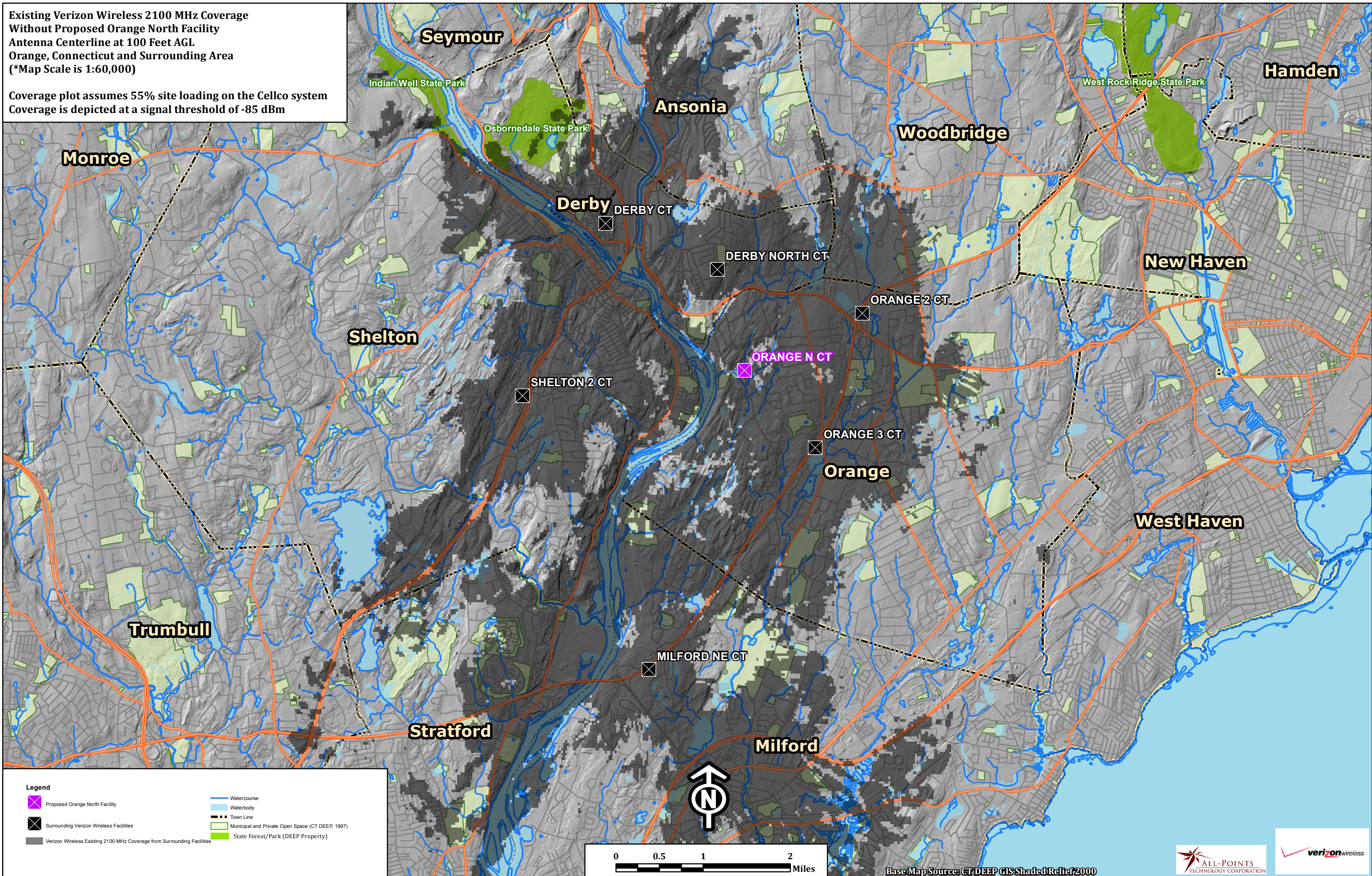
Legend

- ✖ Proposed Orange North Facility
- ✖ Surrounding Verizon Wireless Facilities
- Verizon Wireless 700 MHz Coverage from Proposed Orange North Facility
- Verizon Wireless Existing 700 MHz Coverage from Surrounding Facilities
- Watercourse
- Waterbody
- Town Line
- Municipal and Private Open Space (CT DEEP, 1997)
- State Forest/Park (DEEP Property)



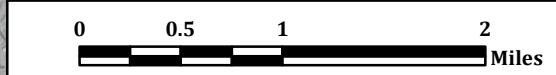
Existing Verizon Wireless 2100 MHz Coverage
 Without Proposed Orange North Facility
 Antenna Centerline at 100 Feet AGL
 Orange, Connecticut and Surrounding Area
 (*Map Scale is 1:60,000)

Coverage plot assumes 55% site loading on the Cellco system
 Coverage is depicted at a signal threshold of -85 dBm



Legend

- ✕ Proposed Orange North Facility
- ✕ Surrounding Verizon Wireless Facilities
- Verizon Wireless Existing 2100 MHz Coverage from Surrounding Facilities
- Watercourse
- Waterbody
- Town Line
- Municipal and Private Open Space (CT DEEP, 1997)
- State Forest/Park (DEEP Property)

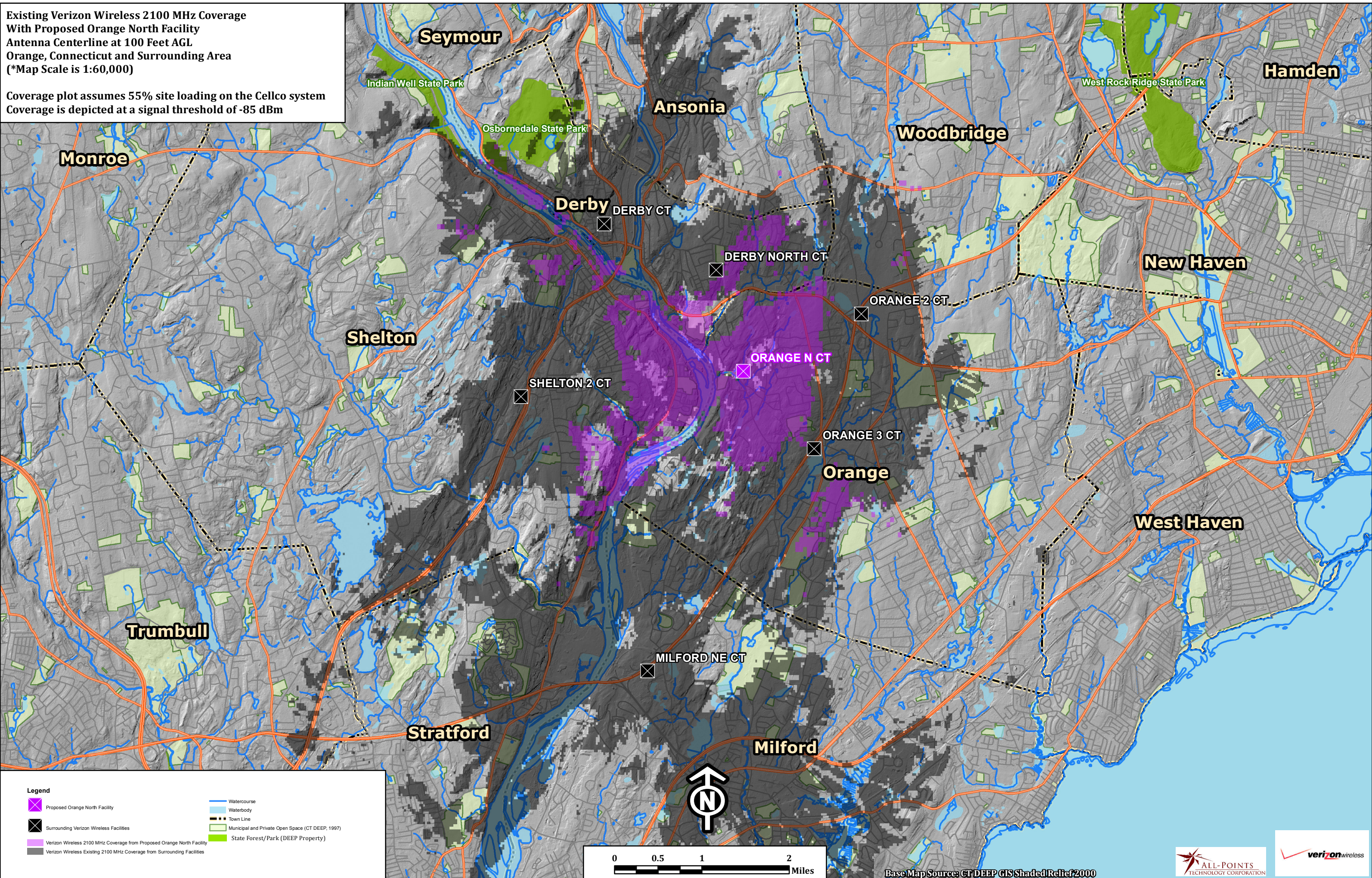


Base Map Source: CT DEEP GIS Shaded Relief 2000



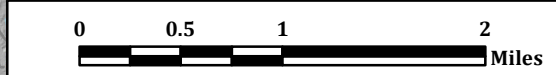
Existing Verizon Wireless 2100 MHz Coverage
 With Proposed Orange North Facility
 Antenna Centerline at 100 Feet AGL
 Orange, Connecticut and Surrounding Area
 (*Map Scale is 1:60,000)

Coverage plot assumes 55% site loading on the Cellco system
 Coverage is depicted at a signal threshold of -85 dBm



Legend

	Proposed Orange North Facility		Watercourse
	Surrounding Verizon Wireless Facilities		Waterbody
	Verizon Wireless 2100 MHz Coverage from Proposed Orange North Facility		Town Line
	Verizon Wireless Existing 2100 MHz Coverage from Surrounding Facilities		Municipal and Private Open Space (CT DEEP, 1997)
			State Forest/Park (DEEP Property)

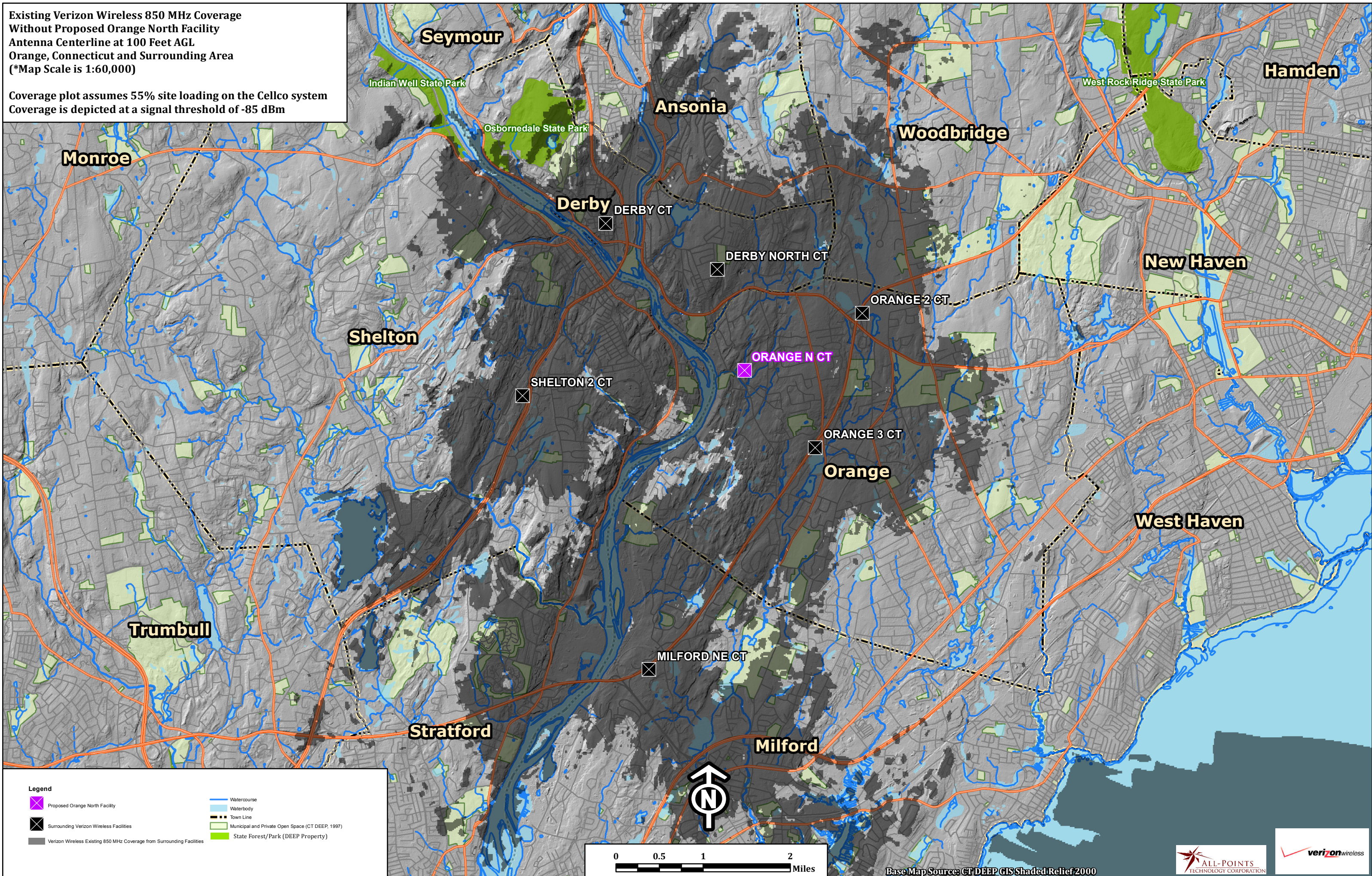


Base Map Source: CT DEEP GIS Shaded Relief 2000



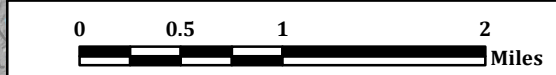
Existing Verizon Wireless 850 MHz Coverage
 Without Proposed Orange North Facility
 Antenna Centerline at 100 Feet AGL
 Orange, Connecticut and Surrounding Area
 (*Map Scale is 1:60,000)

Coverage plot assumes 55% site loading on the Cellco system
 Coverage is depicted at a signal threshold of -85 dBm



Legend

	Proposed Orange North Facility		Watercourse
	Surrounding Verizon Wireless Facilities		Waterbody
	Town Line		Municipal and Private Open Space (CT DEEP, 1997)
	Verizon Wireless Existing 850 MHz Coverage from Surrounding Facilities		State Forest/Park (DEEP Property)

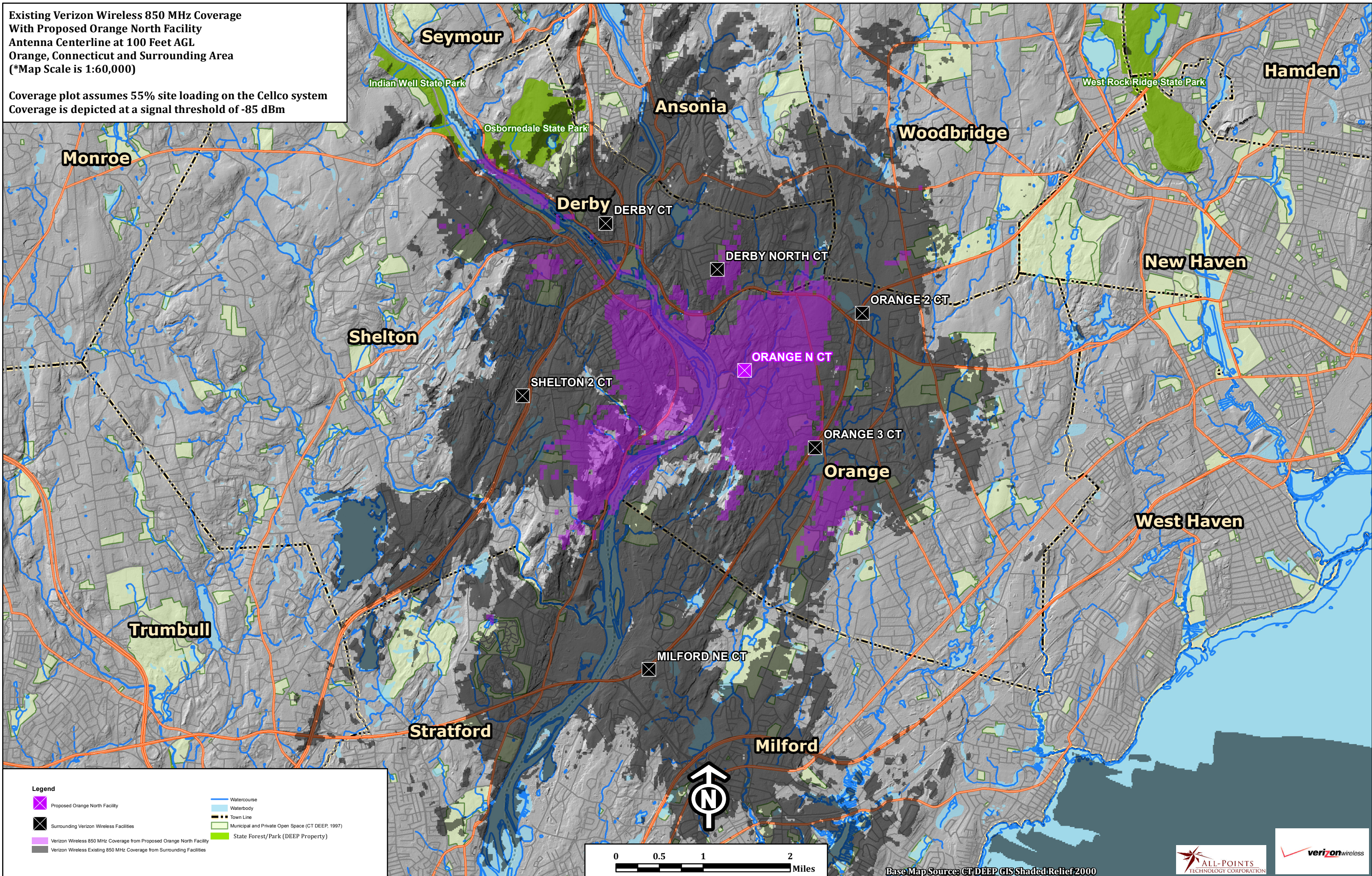


Base Map Source: CT DEEP GIS Shaded Relief 2000



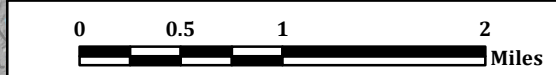
Existing Verizon Wireless 850 MHz Coverage
 With Proposed Orange North Facility
 Antenna Centerline at 100 Feet AGL
 Orange, Connecticut and Surrounding Area
 (*Map Scale is 1:60,000)

Coverage plot assumes 55% site loading on the Cellco system
 Coverage is depicted at a signal threshold of -85 dBm



Legend

- ✕ Proposed Orange North Facility
- ✕ Surrounding Verizon Wireless Facilities
- Verizon Wireless 850 MHz Coverage from Proposed Orange North Facility
- Verizon Wireless Existing 850 MHz Coverage from Surrounding Facilities
- Watercourse
- Waterbody
- Town Line
- Municipal and Private Open Space (CT DEEP, 1997)
- State Forest/Park (DEEP Property)

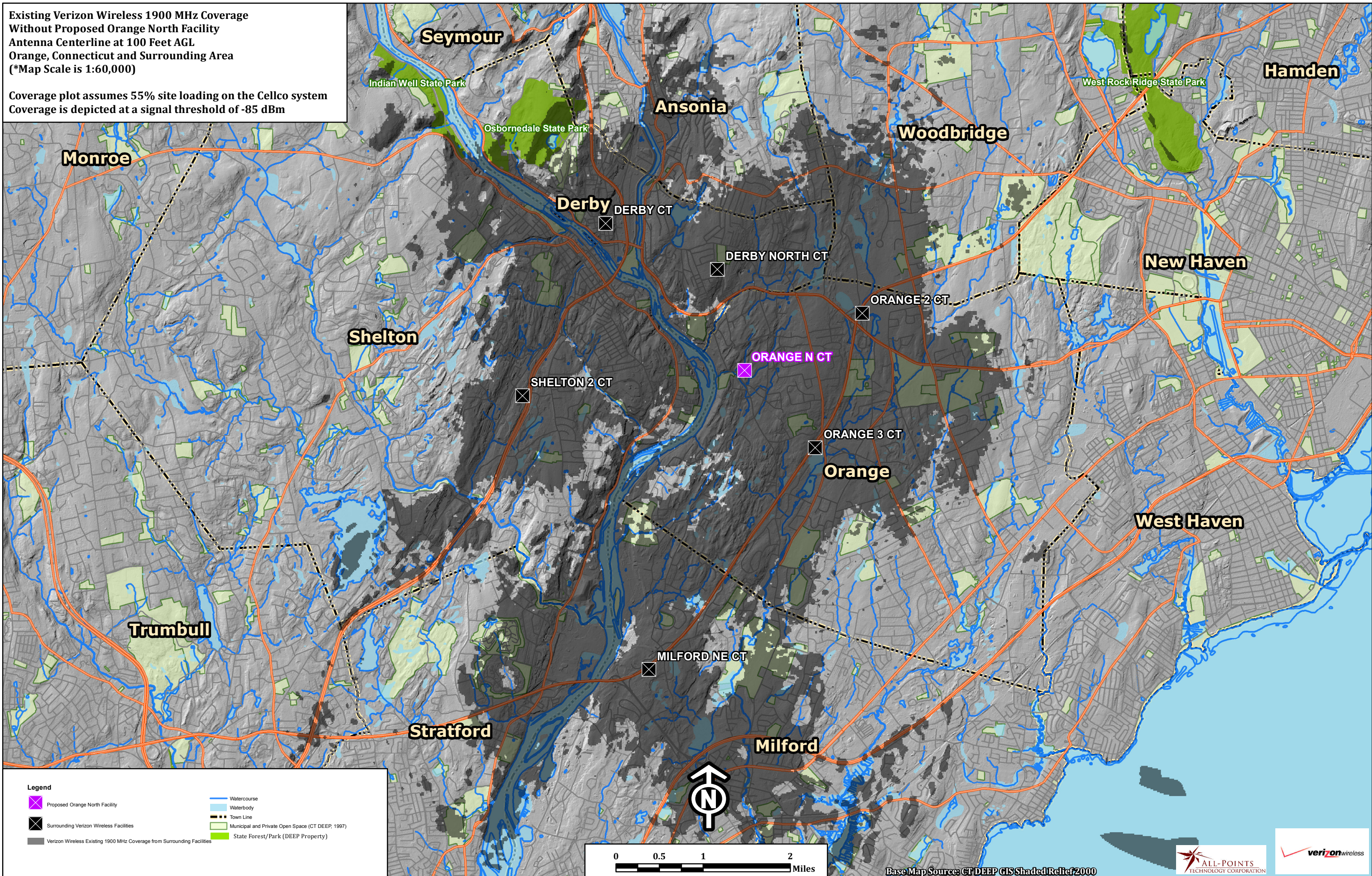


Base Map Source: CT DEEP GIS Shaded Relief 2000



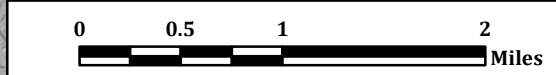
Existing Verizon Wireless 1900 MHz Coverage
 Without Proposed Orange North Facility
 Antenna Centerline at 100 Feet AGL
 Orange, Connecticut and Surrounding Area
 (*Map Scale is 1:60,000)

Coverage plot assumes 55% site loading on the Cellco system
 Coverage is depicted at a signal threshold of -85 dBm



Legend

- ✖ Proposed Orange North Facility
- Surrounding Verizon Wireless Facilities
- Verizon Wireless Existing 1900 MHz Coverage from Surrounding Facilities
- Watercourse
- Waterbody
- Town Line
- Municipal and Private Open Space (CT DEEP, 1997)
- State Forest/Park (DEEP Property)

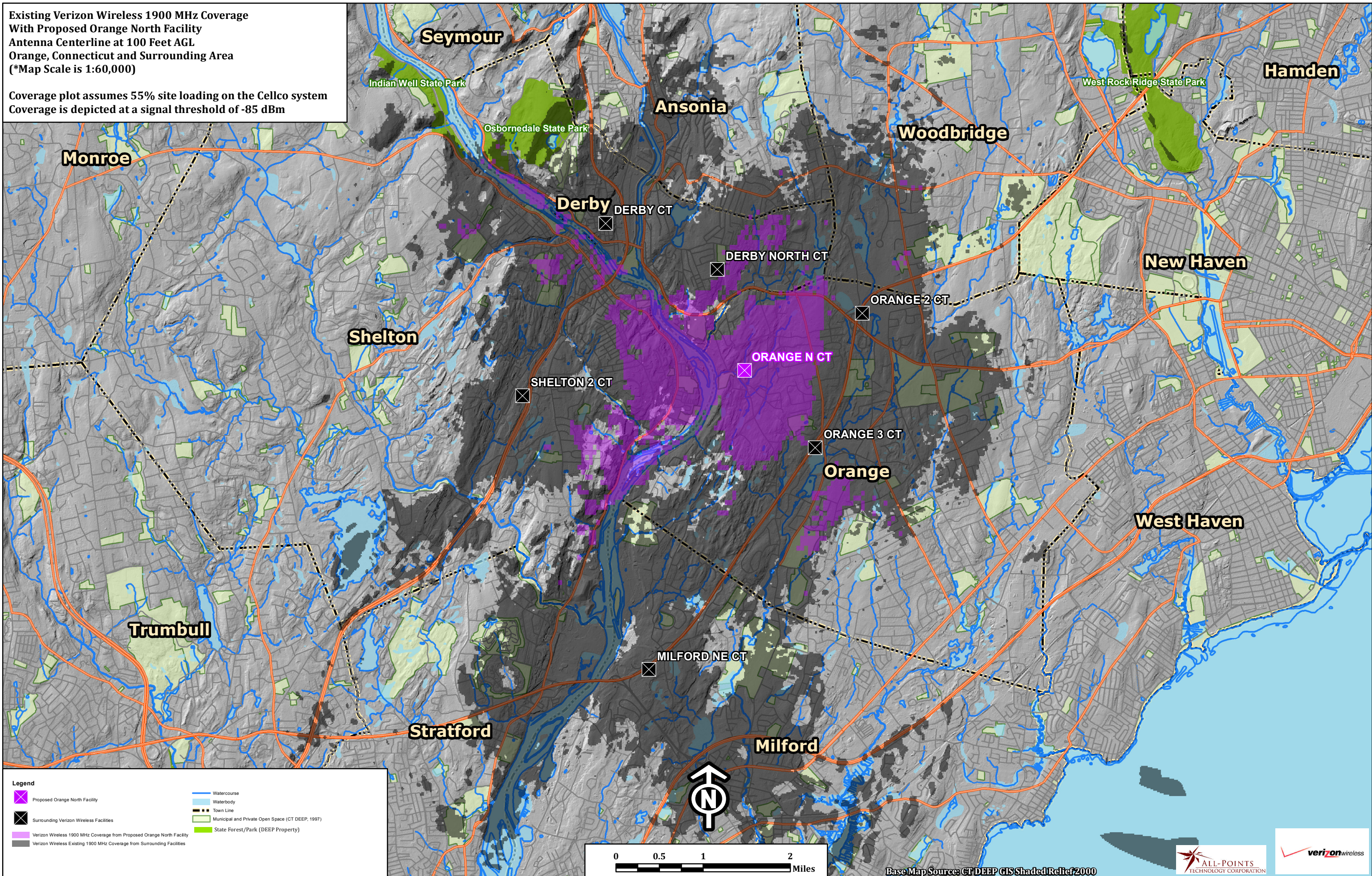


Base Map Source: CT DEEP GIS Shaded Relief 2000



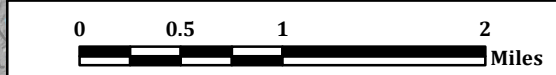
Existing Verizon Wireless 1900 MHz Coverage
 With Proposed Orange North Facility
 Antenna Centerline at 100 Feet AGL
 Orange, Connecticut and Surrounding Area
 (*Map Scale is 1:60,000)

Coverage plot assumes 55% site loading on the Cellco system
 Coverage is depicted at a signal threshold of -85 dBm



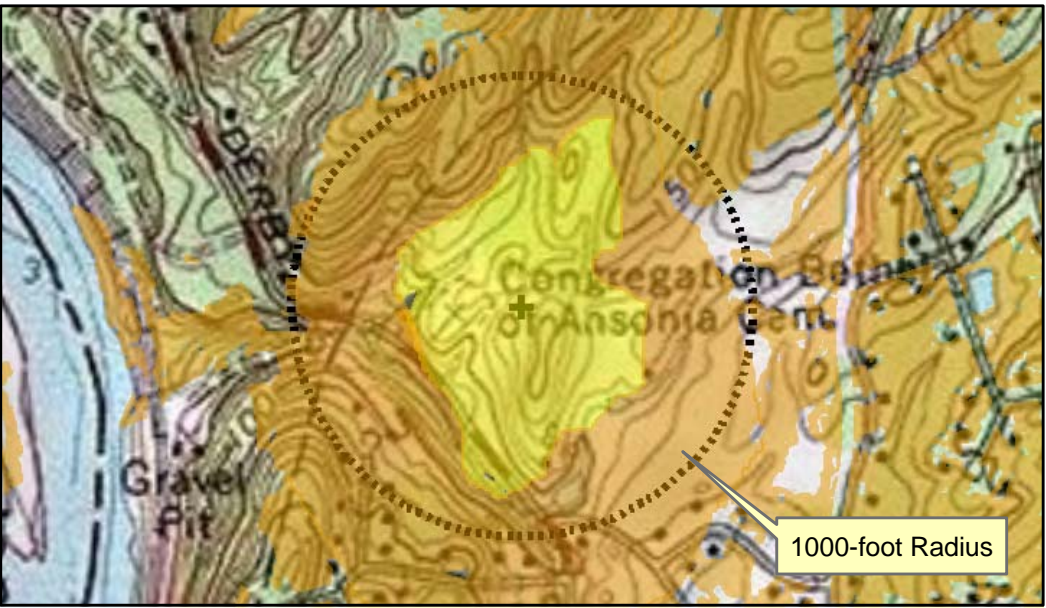
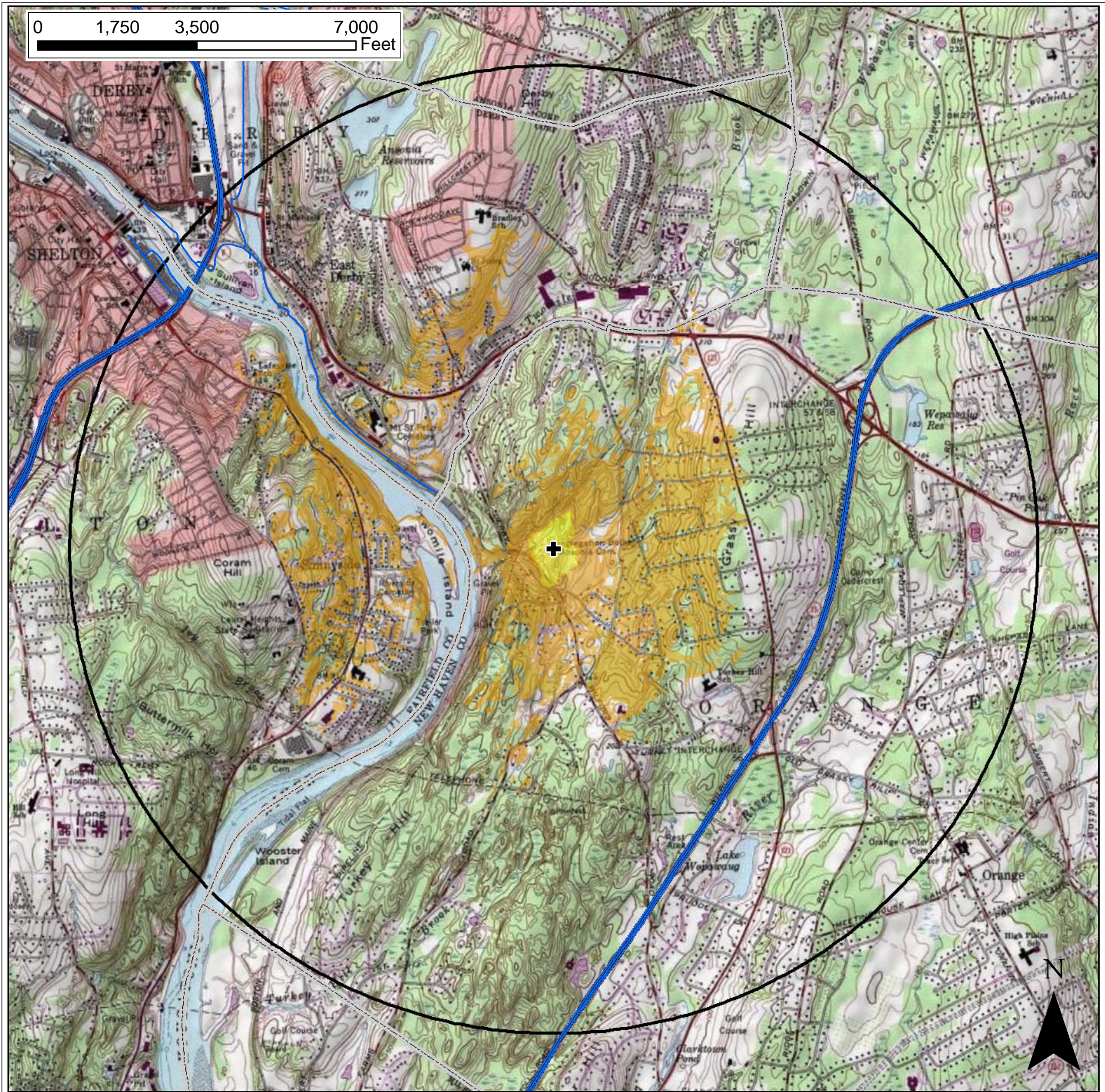
Legend

	Proposed Orange North Facility		Watercourse
	Surrounding Verizon Wireless Facilities		Waterbody
	Verizon Wireless 1900 MHz Coverage from Proposed Orange North Facility		Town Line
	Verizon Wireless Existing 1900 MHz Coverage from Surrounding Facilities		Municipal and Private Open Space (CT DEEP, 1997)
			State Forest/Park (DEEP Property)



Base Map Source: CT DEEP GIS Shaded Relief 2000





Preliminary Viewshed Map – Topo Base

Proposed Wireless Telecommunications Facility
831 Derby-Milford Road, Orange, CT

This Visibility Analysis map relies solely on computer modeling and interpretation of aerial photographs and topographic maps. The information presented herein has not been field verified.

NOTES

- Viewshed analysis conducted using Clark University's IDRISI.
- Areas of potential visibility are calculated based on facility location and height, Study Area topography, and Study Area vegetation.
- Proposed facility height is 100 feet AGL.
- Forest canopy height is 50 feet AGL
- Study area encompasses a two-mile radius and includes 8,042 acres of land.

DATA SOURCES

- Digital elevation model (DEM) derived from 10-foot contours obtained from official CT DEEP and CLEAR sources.
- Forest areas are generated with IDRISI (Clark University) image processing from 2012 NRCS/NAIP digital orthophotos with 1-foot pixel resolution.
- Municipal Open Space, State Recreation Areas, County Recreation Areas, and Town Boundary data obtained from CT DEEP.

Legend

- Proposed Tower
- Trails
- Predicted Seasonal Visibility (24 Ac.)
- Predicted Year-Round Visibility (590 Ac.)
- Towns
- 2-Mile Study Area
- Open Space

