

March 7, 2014

VIA FIRST CLASS MAIL

Melanie Bachman, Esq.
Executive Director
Connecticut Siting Council
10 Franklin Square
New Britain, CT 06051



Re: Docket 447 - New Cingular Wireless PCS, LLC ("AT&T")
Proposed Wireless Telecommunications Tower Facility
560 West Hill Road, Stamford, Connecticut

Dear Executive Director Bachman:

Enclosed please find a copy of a powerpoint presentation that the Applicant and its representatives presented to the public during a community meeting that AT&T hosted in Stamford Connecticut on March 6th. The March 6th community meeting was noticed by AT&T to the public and conducted by AT&T at the request of Stamford's Mayor. While the meeting was not a Section 16-501 public information session and the enclosed document need not be part of the formal record for Council consideration in Docket No. 447, we are nevertheless bulk filing it for the Council's reference as related to the March 6th community meeting. Thank you.

Very truly yours,

Christopher B. Fisher
Enclosure



120' MONOPINE TOWER FACILITY
WEST HILL ROAD
STAMFORD, CT

Community Meeting
March 5, 2014

Introductions

Purpose and Goals for Community Meeting

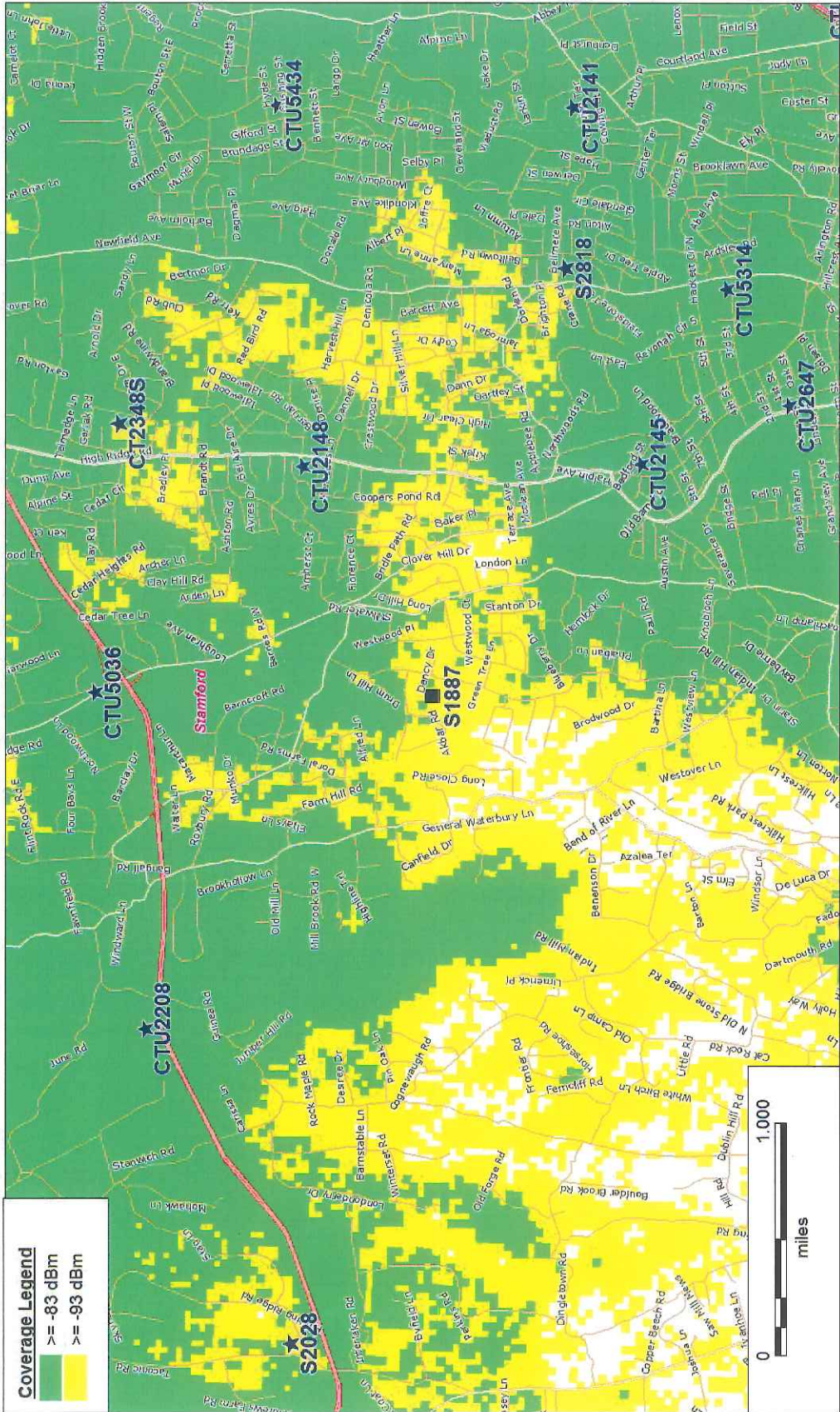
- AT&T overview of the Project
- Discuss Siting Council Application Process
- Community Q&A

Our Network in a Day

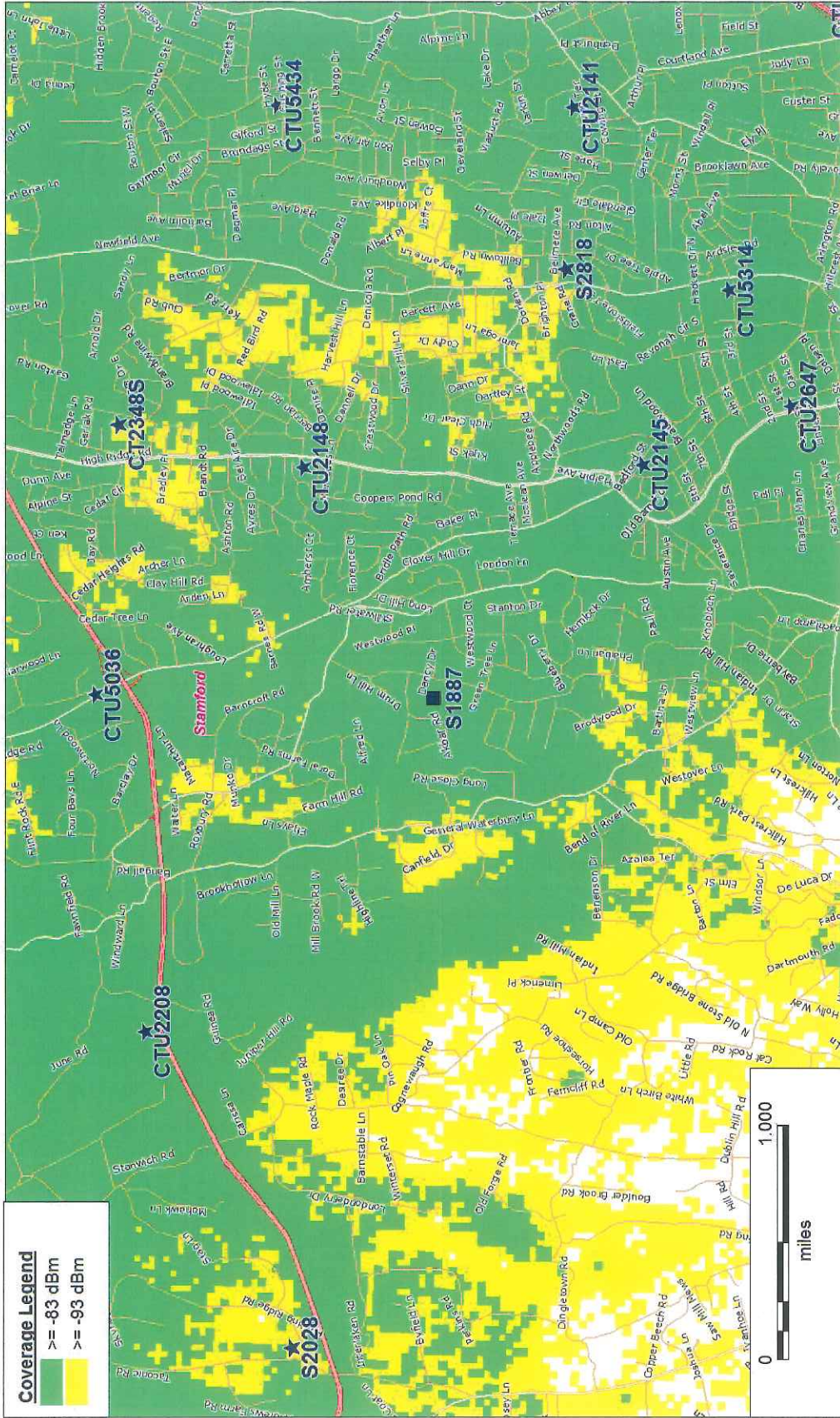
In 1914, our network allowed millions of Americans to connect via voice with one another. One hundred years later, our network represents billions of devices connecting hundreds of millions of people – allowing communication that extends far beyond hearing another person's voice.



*Wi-Fi hotspots are defined as locations where users can connect to the Internet. Coverage is not available in all areas. © 2014 AT&T Knowledge Ventures. All rights reserved. AT&T and the AT&T logo are trademarks of AT&T Knowledge Ventures.



AT&T Current Coverage (700 MHz) at Stamford, CT



AT&T Proposed Coverage (700 MHz) at Stamford, CT with S1887 @ 116' AGL

Site Need & Wireless Service Area

This site will provide 1.34 square miles of new reliable 4G LTE service which is 3.5% of the City area.

This site will provide new reliable 4G LTE service to over 5,000 City residents in Westover and Roxbury.

Approximately 70% of 911 calls are placed from wireless phones*

The City will still have 16 square miles of area and thousands of residents in need of service improvements which AT&T is addressing through several additional sites in the City.

CTIA, Wireless 9-1-1 and Distress Calls <http://www.ctia.org/press-releases/wireless-911-1012>
FCC, 911 Wireless Service Guide, <http://www.fcc.gov/wireless/911/911-service-guide>

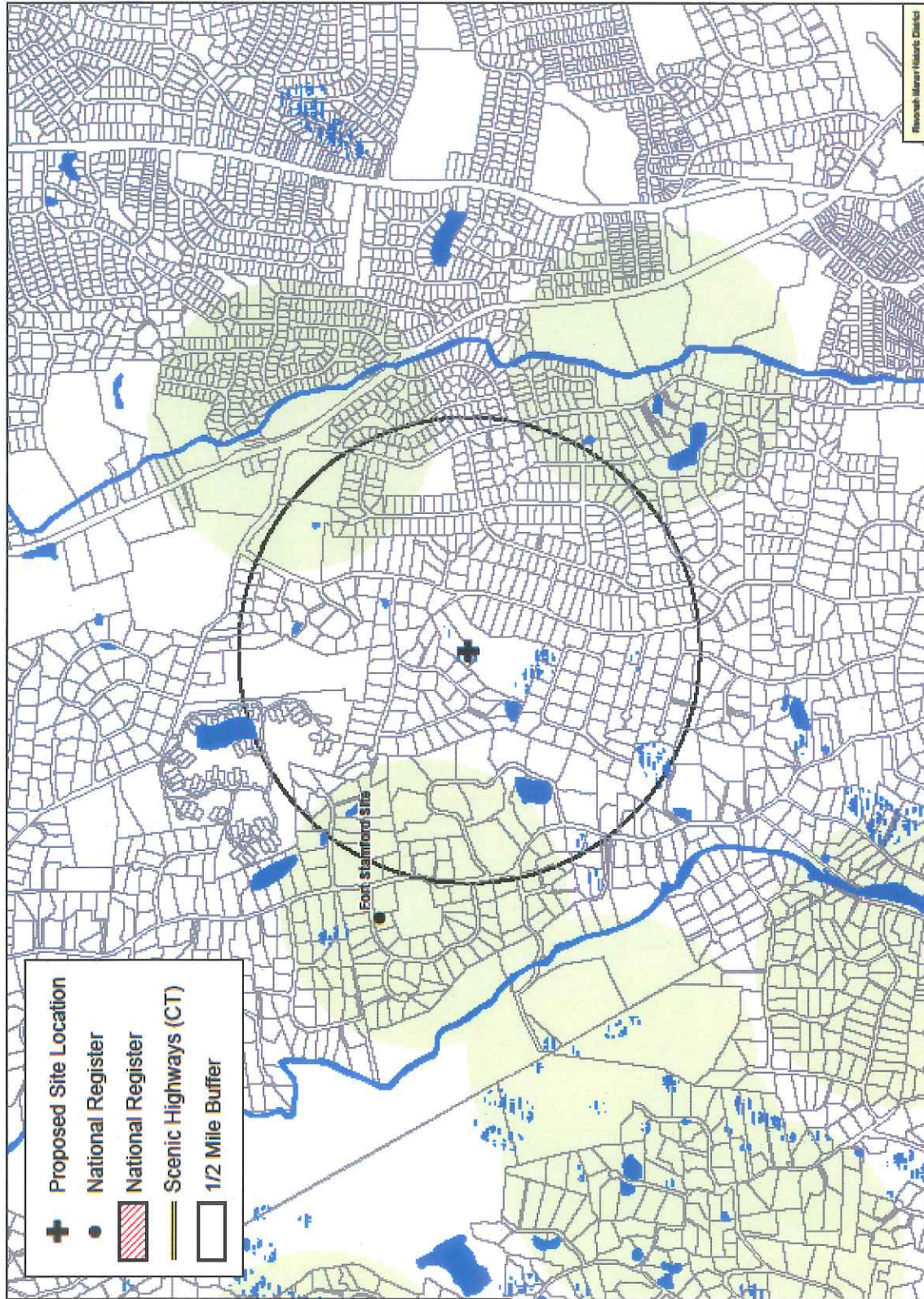
Site Selection Search Summary






AT&T investigated any existing towers and structures and none identified for service in Stamford

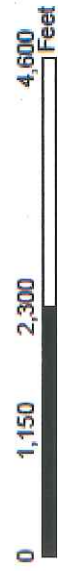
In 2009, explored Fort Stamford with City Park's Commission which rejected a proposal by AT&T

AT&T explored siting at Roxbury Swim & Tennis Club which rejected a proposal

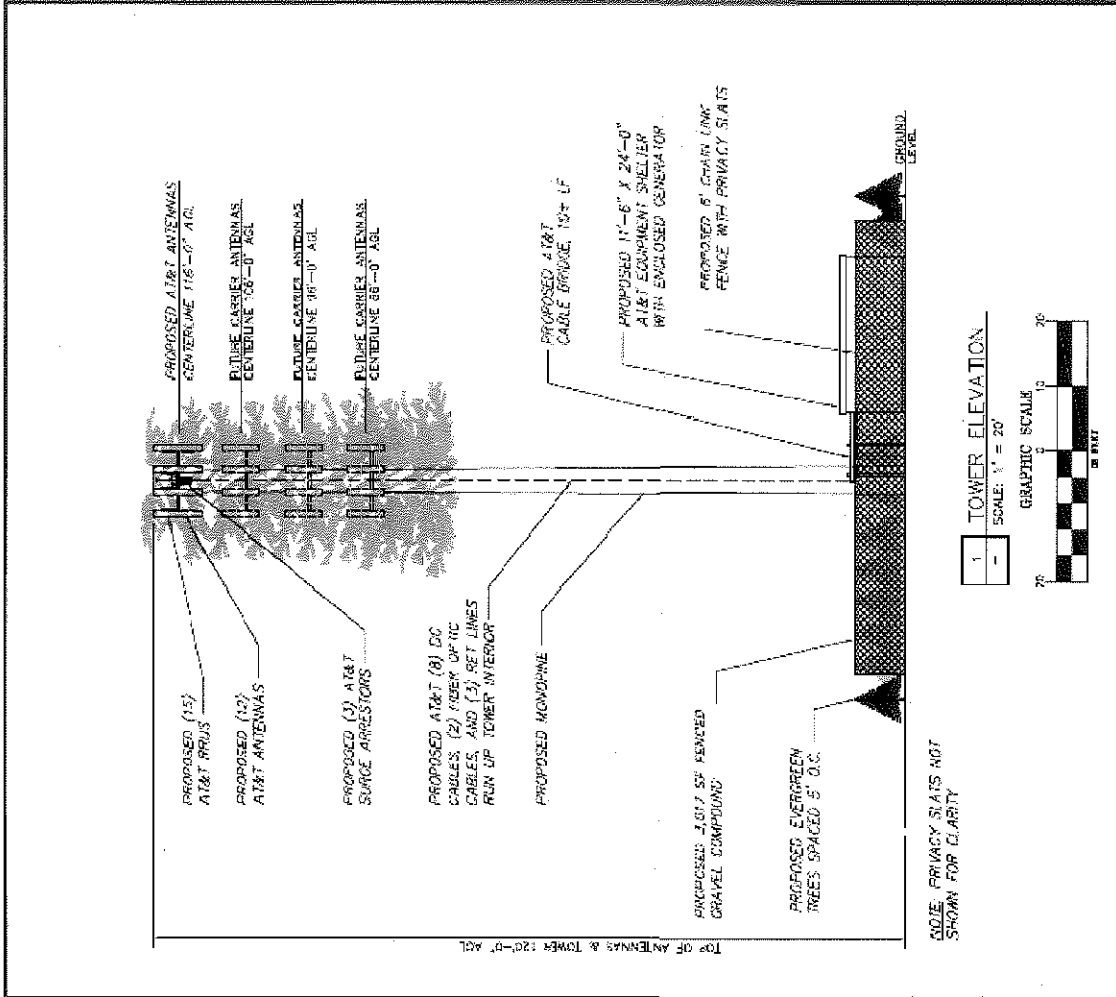
AT&T focused on other larger parcels including those in and around the cemeteries in Westover/Roxbury



-  Proposed Site Location
-  National Register
-  National Register
-  Scenic Highways (CT)
-  1/2 Mile Buffer



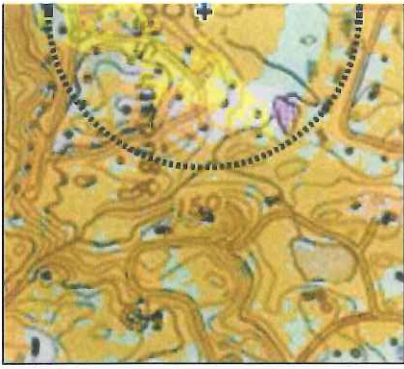
Research Manor Historic District



NOTE: PRIVACY SLATS NOT SHOWN FOR CLARITY

<p>DATE: 12/11/2013</p>	<p>NEW SERVICE AREAS ARE TO BE DISTRIBUTED THROUGH THE USE OF BRUS.</p>	<p>SR 1887</p> <p>STAMFORD</p> <p>580 WEST HILL ROAD</p> <p>STAMFORD, CT 06902</p> <p>FAIRFIELD COUNTY</p>	<p>SHEET TITLE:</p> <p>TOWER ELEVATION</p>
		<p>SAI</p> <p>12-REVISION DATE: 12/11/2013</p> <p>SCALE: 1/8" = 1'-0"</p>	<p>DATE:</p> <p>12/11/2013</p> <p>REVISION:</p> <p>1</p>

DATE: 12/11/2013 10:46 AM FILE: \\P:\CADD\PROJECTS\STAMFORD 3\12/11/2013\1046-2013-01-10-01.dwg



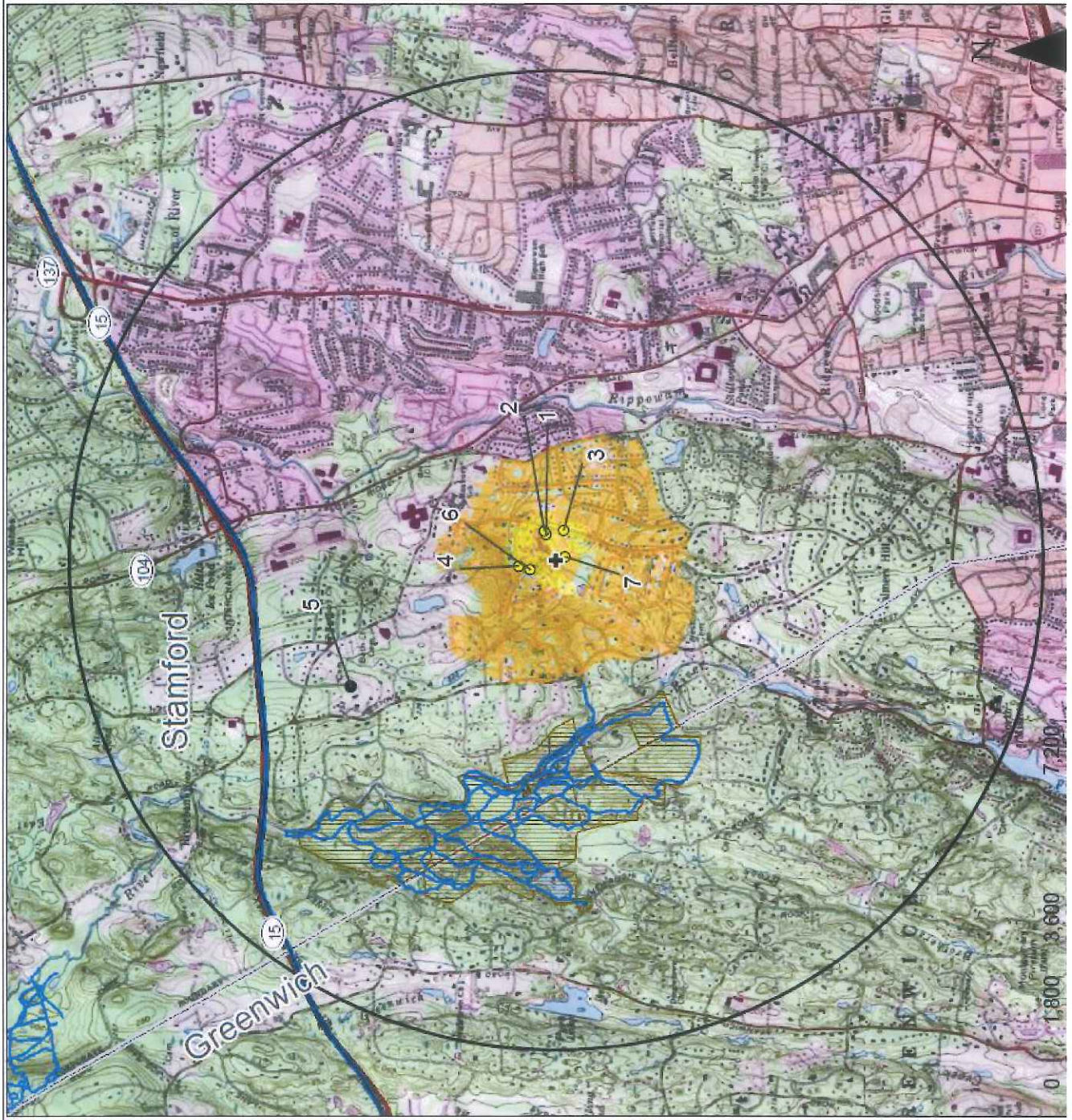
VISIBILITY ANALYSIS:
 Proposed Wireless Telec
 560 West
 Stamford

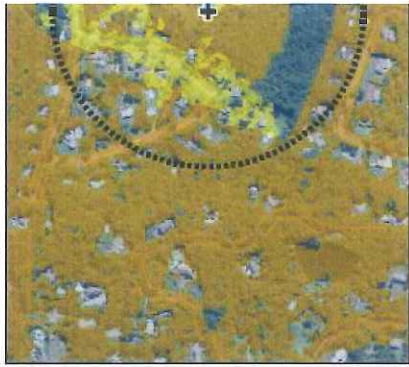
Proposed facility height is 120 feet AGL
 Existing tree canopy height estimated as 60'
 Study area is a two-mile radius surrounding
 includes 8,042 acres of land

Map information field verified by APT on 10-
 Only those resources located within the Sit
 of data sources consulted for this analysis.)

Legend

- + Proposed Tower
- 2-Mile Study Area
- Predicted Year-Round Visibility
- Predicted Seasonal Visibility
- Trails
- ▨ Municipal Private Open Space
- Scenic Highways
- Towns





VISIBILITY ANALYSIS

Proposed Wireless Tower
560 West
Stamfo

Proposed facility height is 120 feet AGL
Existing tree canopy height estimated as 60'
Study area is a two-mile radius surrounding
includes 8,042 acres of land

Map information field verified by APT on 10/10/10
Only those resources located within the Study Area
of data sources consulted for this analysis.)

Legend

- + Proposed Tower
- 2-Mile Study Area
- Yellow Predicted Year-Round Visibility
- Orange Predicted Seasonal Visibility
- Blue Trails
- Blue Municipal Private Open Space
- Blue Scenic Highways
- White Towns





DOCUMENTATION

PHOTO	LOCATION	ORIENTATION	DISTANCE TO SITE	VISIBILITY
1	WEST HILL ROAD AT CONGREGATION AGUDATH SHOLOM CEMETERY (24 mm Focal Length)	WEST	+/- 0.06 MILE	YEAR ROUND





SIMULATION

PHOTO	LOCATION	ORIENTATION	DISTANCE TO SITE	VISIBILITY
1	WEST HILL ROAD AT CONGREGATION AGUDATH SHOLOM CEMETERY (24 mm Focal Length)	WEST	+/- 0.06 MILE	YEAR ROUND



DOCUMENTATION

PHOTO	LOCATION	ORIENTATION	DISTANCE TO SITE	VISIBILITY
2	WEST HILL ROAD AT CONGREGATION AGUDATH SHOLOM CEMETERY	WEST	+/- 0.07 MILE	YEAR ROUND

11/1



SIMULATION

PHOTO

2

LOCATION

WEST HILL ROAD AT CONGREGATION AGUDATH SHOLOM CEMETERY

ORIENTATION

WEST

DISTANCE TO SITE

+/- 0.07 MILE

VISIBILITY

YEAR ROUND



DOCUMENTATION

PHOTO

3

LOCATION

ADJACENT TO #545 WEST HILL ROAD

ORIENTATION

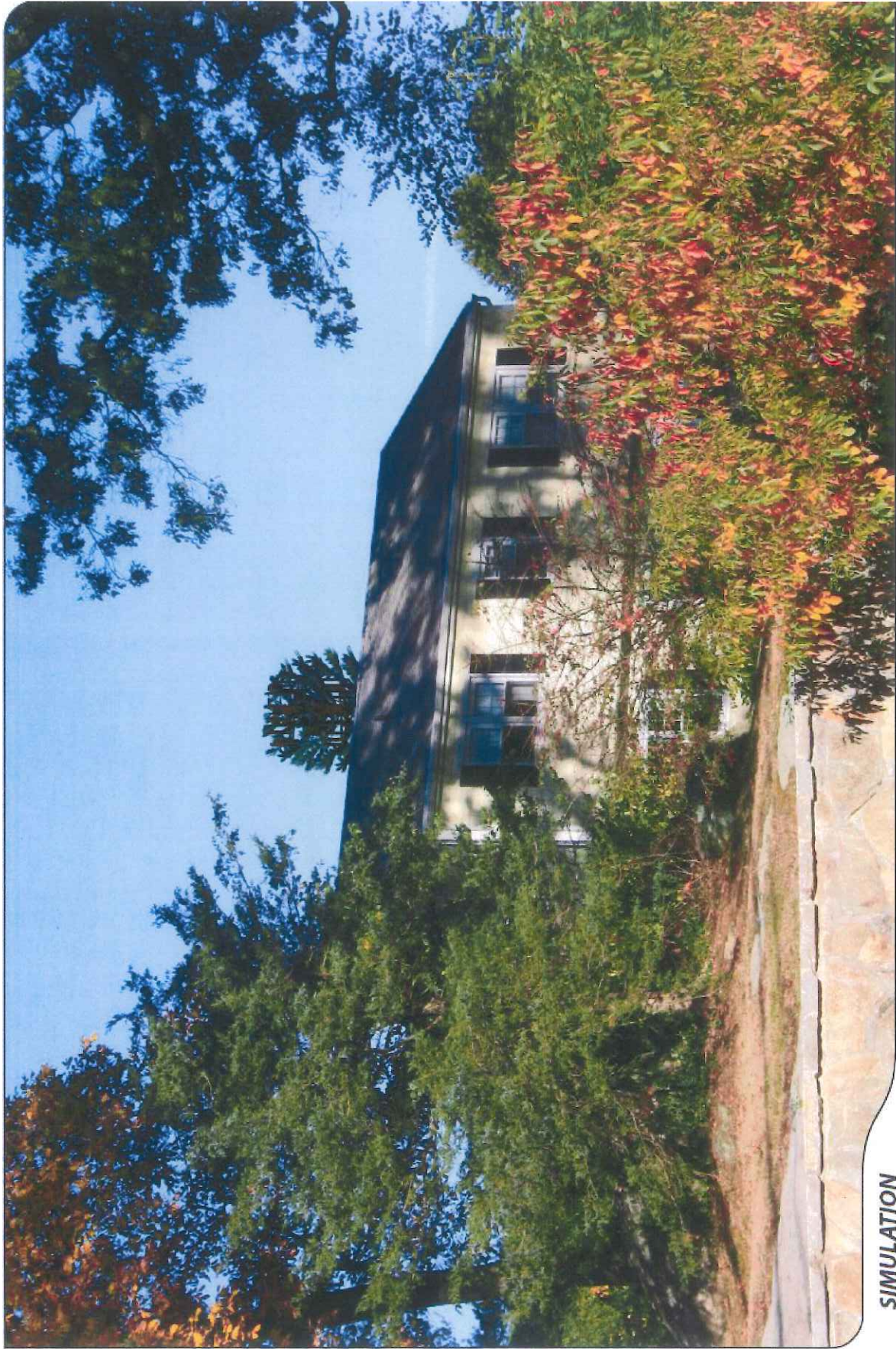
NORTHWEST

DISTANCE TO SITE

+/- 0.12 MILE

VISIBILITY

YEAR ROUND



SIMULATION

PHOTO

3

LOCATION

ADJACENT TO #545 WEST HILL ROAD

ORIENTATION

NORTHWEST

DISTANCE TO SITE

+/- 0.12 MILE

VISIBILITY

YEAR ROUND



DOCUMENTATION

PHOTO	LOCATION	ORIENTATION	DISTANCE TO SITE	VISIBILITY
4	AKBAR ROAD AT MACGREGOR DRIVE	SOUTHEAST	+/- 0.11 MILE	YEAR ROUND

1/2



SIMULATION

PHOTO

4

LOCATION

AKBAR ROAD AT MACGREGOR DRIVE

ORIENTATION

SOUTHEAST

DISTANCE TO SITE

+/- 0.11 MILE

VISIBILITY

YEAR ROUND



DOCUMENTATION

PHOTO

5

LOCATION

ROXBURY CEMETERY

ORIENTATION

SOUTHEAST

DISTANCE TO SITE

+/- 0.97 MILE

VISIBILITY

NOT VISIBLE



DOCUMENTATION

PHOTO	LOCATION	ORIENTATION	DISTANCE TO SITE	VISIBILITY
6	ADJACENT TO #24 AKBAR ROAD	SOUTHEAST	+/- 0.10 MILE	YEAR ROUND



SIMULATION

PHOTO

6

LOCATION

ADJACENT TO #24 AKBAR ROAD

ORIENTATION

SOUTHEAST

DISTANCE TO SITE

+/- 0.10 MILE

VISIBILITY

YEAR ROUND



DOCUMENTATION

PHOTO	LOCATION	ORIENTATION	DISTANCE TO SITE	VISIBILITY
7	CONGREGATION AGUDATH SHOLOM CEMETERY	NORTHWEST	+/- 0.10 MILE	YEAR ROUND



SIMULATION

PHOTO

7

LOCATION

CONGREGATION AGUDATH SHOLOM CEMETERY

ORIENTATION

NORTHWEST

DISTANCE TO SITE

+/- 0.10 MILE

VISIBILITY

YEAR ROUND

Siting Council Application Process

AT&T's Application was filed with the Siting Council on March 4, 2014

The Council will post the Application (Docket 447) on its website
www.ct.gov/csc

A public hearing will be held by the Siting Council in Stamford

The Council will verify the tower's compliance with state and federal standards for public health and safety

The Council has public participation guidelines available on its website

A decision on an application is generally expected within six months

Community Q&A