



STATE OF CONNECTICUT

CONNECTICUT SITING COUNCIL

Ten Franklin Square, New Britain, CT 06051

Phone: (860) 827-2935 Fax: (860) 827-2950

E-Mail: siting.council@po.state.ct.us

Web Site: www.ct.gov/csc

Date: November 13, 2015

RE: **Post-Construction Report - DOCKET NO. 446** - Cellco Partnership d/b/a Verizon Wireless Certificate of Environmental Compatibility and Public Need for the construction, maintenance, and operation of a telecommunications facility located at the Pilot Corporation of America property, Trumbull Tax Assessor Map K/09 Lot 20, 60 Commerce Drive, Trumbull, Connecticut.

On June 26, 2014, the Connecticut Siting Council (Council) issued a Certificate of Environmental Compatibility and Public Need to Cellco Partnership d/b/a Verizon Wireless (Cellco) for the construction, maintenance, and operation of a monopole telecommunications facility at the former Pilot Corporation of America property at 60 Commerce Drive, Trumbull, Connecticut. The Development and Management (D&M) Plan was approved on November 13, 2014. On May 12, 2015 the Council approved a revision to the D&M Plan that entailed relocating the radio equipment shelter from the east side of the compound to the west side of the compound and relocation of a utility easement.

On May 4, 2015, Cellco notified the Council of the commencement of construction. On September 22, 2015, Cellco notified the Council that construction was completed and the site was operational. A field review of the site by Council staff was conducted on October 20, 2015.

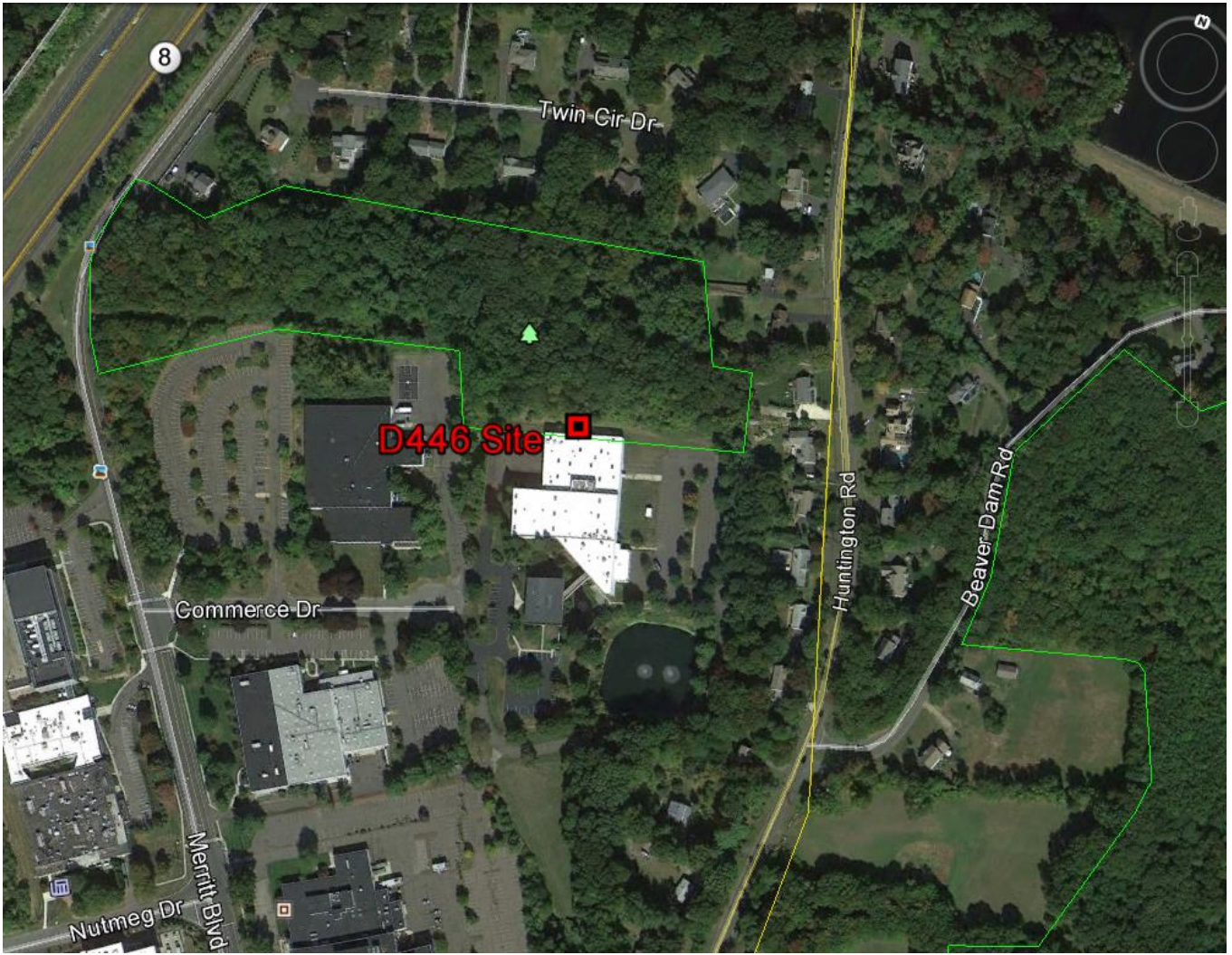
The 80-foot monopole facility is located on a 14-acre parcel developed with two commercial buildings. The monopole and associated 24-foot by 77-foot equipment compound is located on the north side of the northern office building on the property. The north side of the building features a narrow strip of land between the building and a steep, wooded hillside.

The compound is enclosed by an eight-foot high chain link fence with black vinyl coating on the east and west sides, including swing gates on both sides to allow compound access. The office building forms the south side of the compound and a seven foot tall modular retaining wall, built to stabilize the hillside, forms the north side of the compound. A four-foot high chain link fence is located on top of the retaining wall. A 100-foot long gravel access drive was constructed along the east side of the property to provide drive up access to the compound.

Cellco installed 12 panel antennas and three remote radio heads on an antenna platform on the tower at a centerline height of 80 feet above ground level. According to the tower design specifications in the D&M Plan, the tower was constructed to support a 20-foot extension to facilitate tower sharing. No other carriers are using the facility at this time.

Views of the facility are minimal due to the low height of the tower, and the wooded, hilly terrain of the surrounding area. The tower is visible year-round from areas within the Trumbull Corporate Park but not from abutting roadways or adjacent residences. Seasonal visibility is expected from a few residential properties east of the site. The facility compound is not visible from off-property areas.

No construction-related issues were evident at the time of the inspection. The observed physical conditions of this site appear to conform to the approved D&M Plan with the exception of privacy slats that were specified for a galvanized chain link fence. A black vinyl coated chain link fence was installed instead, most likely to prevent ongoing maintenance issues with privacy slats installed on swing gates, as they can be easily damaged. Staff does not recommend privacy slats in this location as the compound is isolated from surrounding areas and the installed black vinyl fencing serves the same purpose.



Site Location - 60 Commerce Drive, Trumbull. 80-foot monopole.



West side of Site



East side of Site



Interior compound view



View of facility from abutting property at 45 Commerce Drive (west of site)