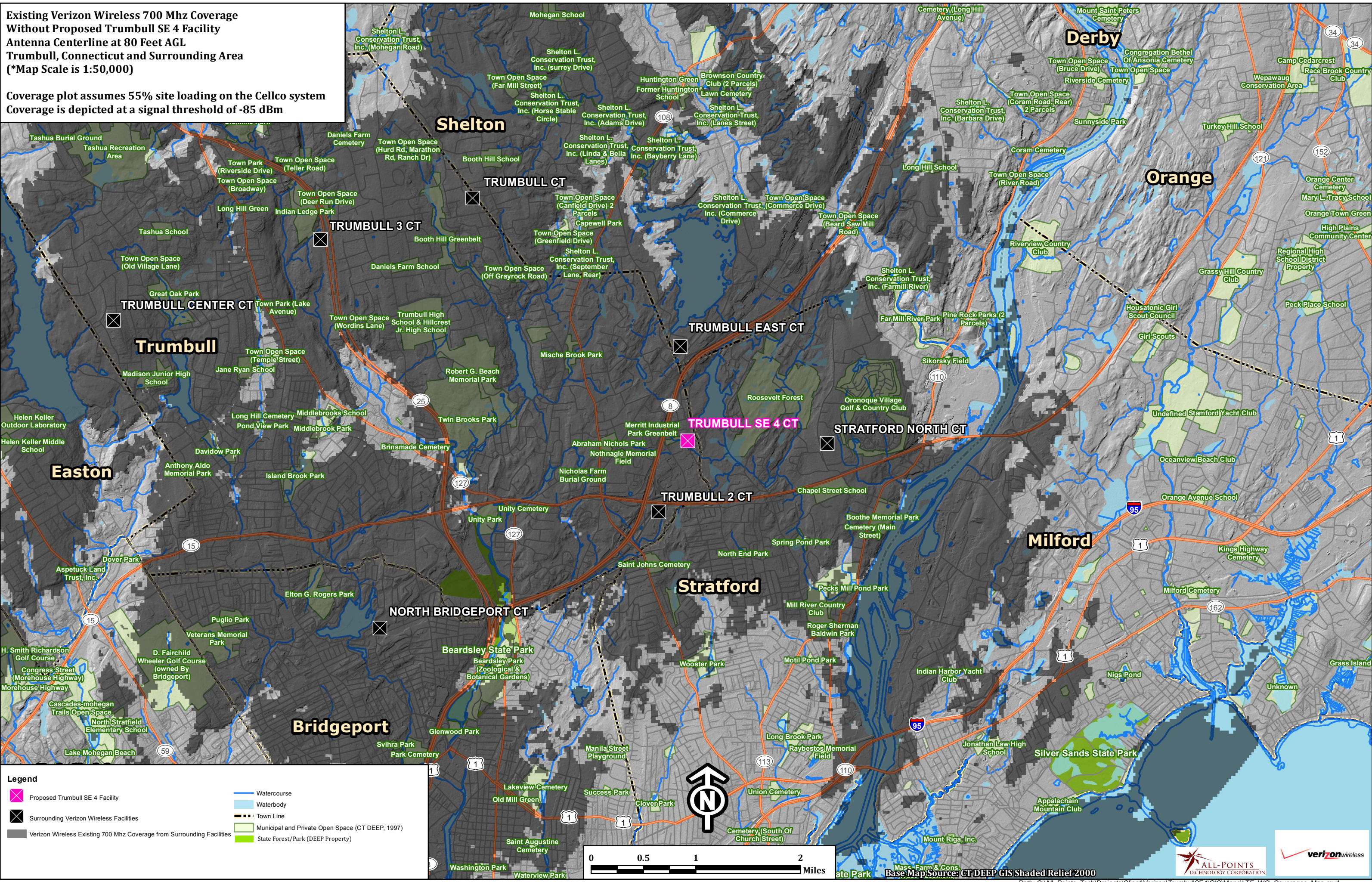


Existing Verizon Wireless 700 Mhz Coverage Without Proposed Trumbull SE 4 Facility
Antenna Centerline at 80 Feet AGL
Trumbull, Connecticut and Surrounding Area
 (*Map Scale is 1:50,000)

Coverage plot assumes 55% site loading on the Cellco system
Coverage is depicted at a signal threshold of -85 dBm



- Legend**
- Proposed Trumbull SE 4 Facility
 - Surrounding Verizon Wireless Facilities
 - Verizon Wireless Existing 700 Mhz Coverage from Surrounding Facilities
 - Watercourse
 - Waterbody
 - Town Line
 - Municipal and Private Open Space (CT DEEP, 1997)
 - State Forest/Park (DEEP Property)

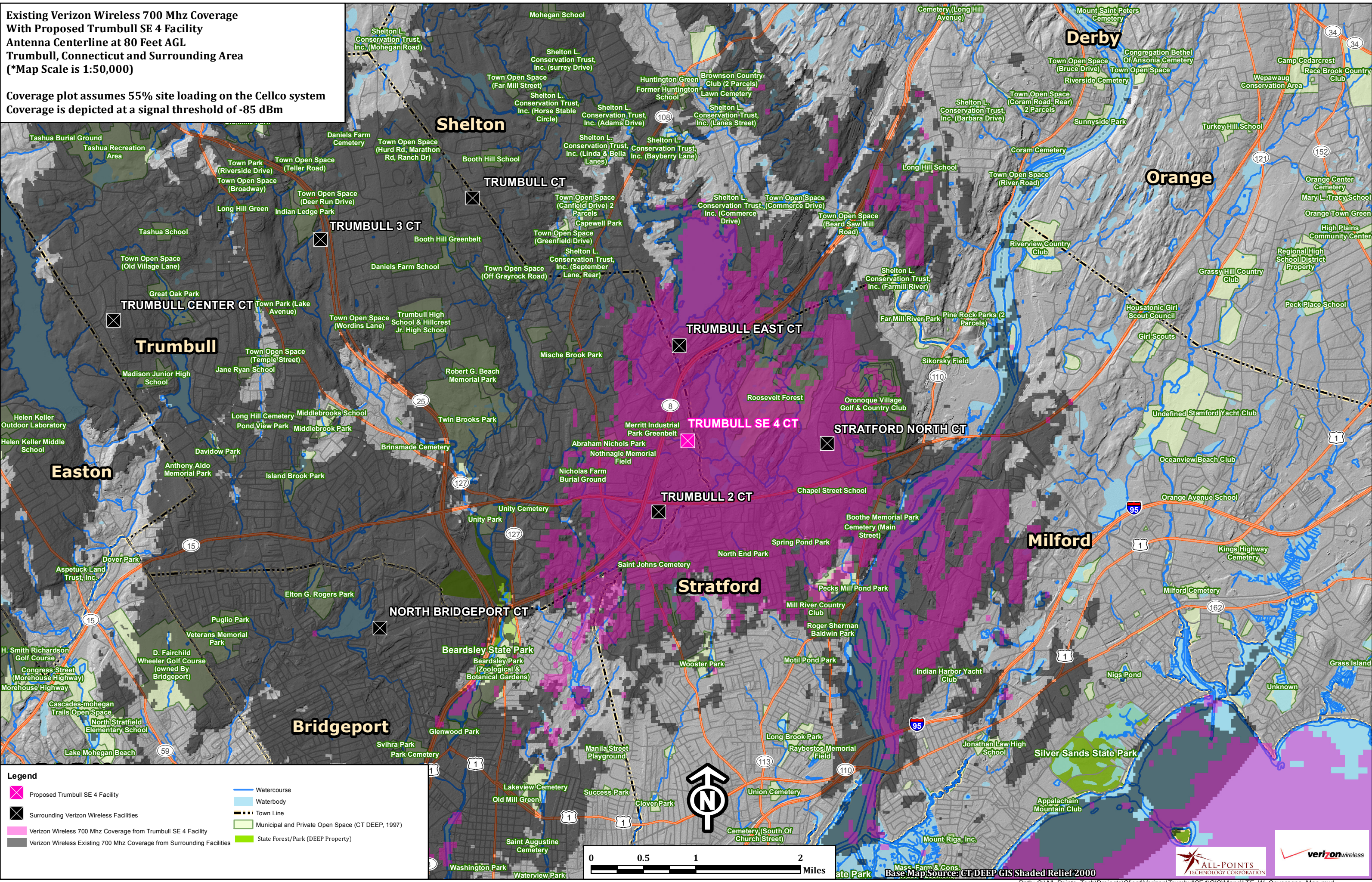


Base Map Source: CT DEEP GIS Shaded Relief 2000

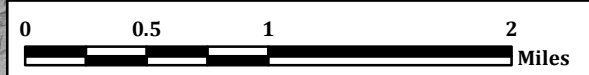


**Existing Verizon Wireless 700 Mhz Coverage
With Proposed Trumbull SE 4 Facility
Antenna Centerline at 80 Feet AGL
Trumbull, Connecticut and Surrounding Area
(*Map Scale is 1:50,000)**

**Coverage plot assumes 55% site loading on the Cellco system
Coverage is depicted at a signal threshold of -85 dBm**



- Legend**
- Proposed Trumbull SE 4 Facility
 - Surrounding Verizon Wireless Facilities
 - Verizon Wireless 700 Mhz Coverage from Trumbull SE 4 Facility
 - Verizon Wireless Existing 700 Mhz Coverage from Surrounding Facilities
 - Watercourse
 - Waterbody
 - Town Line
 - Municipal and Private Open Space (CT DEEP, 1997)
 - State Forest/Park (DEEP Property)

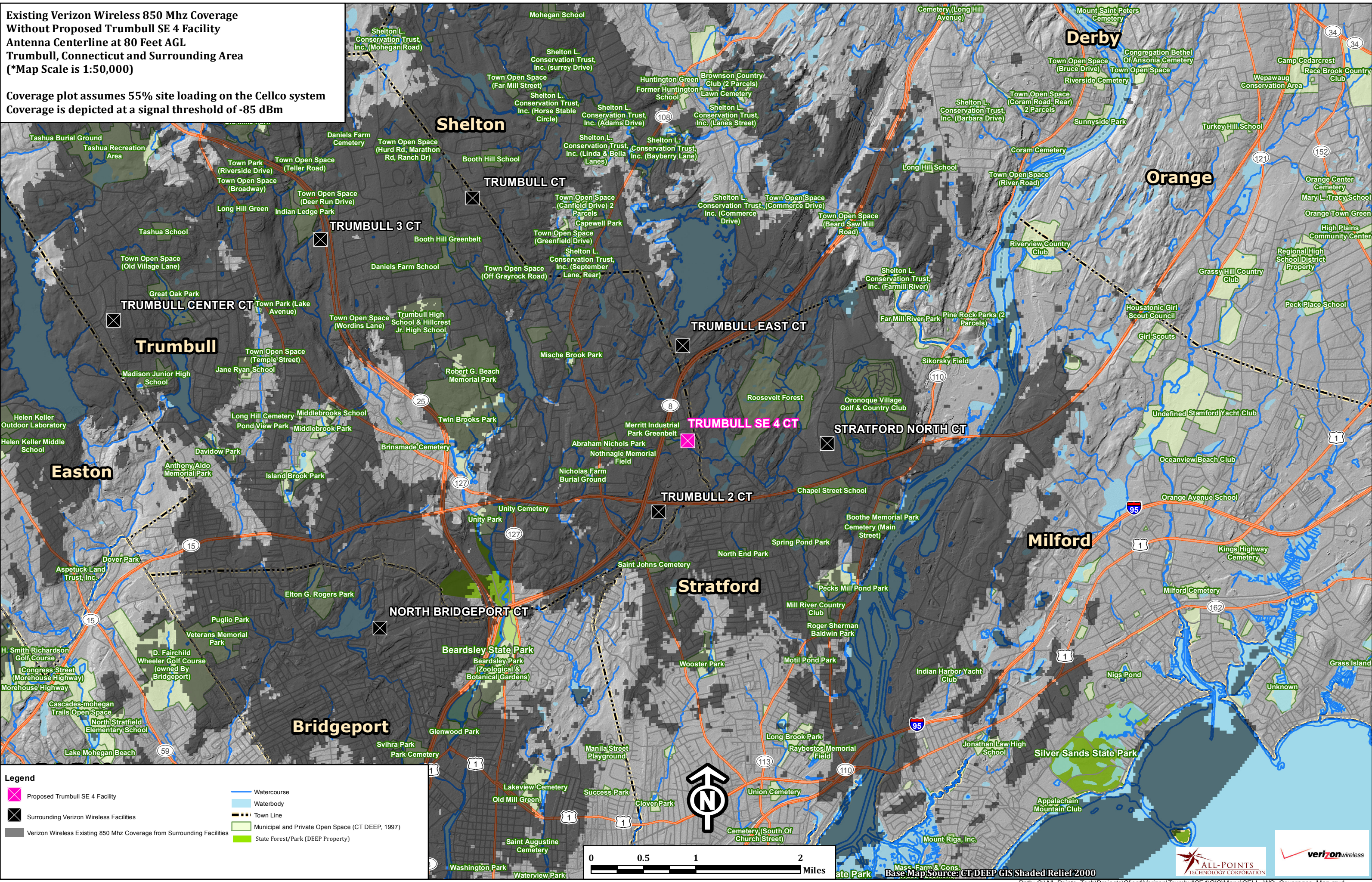


Mass Farm & Cons. Base Map Source: CT DEEP GIS Shaded Relief 2000



Existing Verizon Wireless 850 Mhz Coverage Without Proposed Trumbull SE 4 Facility
Antenna Centerline at 80 Feet AGL
Trumbull, Connecticut and Surrounding Area
 (*Map Scale is 1:50,000)

Coverage plot assumes 55% site loading on the Cellco system
Coverage is depicted at a signal threshold of -85 dBm



Legend

- Proposed Trumbull SE 4 Facility
- Surrounding Verizon Wireless Facilities
- Verizon Wireless Existing 850 Mhz Coverage from Surrounding Facilities
- Watercourse
- Waterbody
- Town Line
- Municipal and Private Open Space (CT DEEP, 1997)
- State Forest/Park (DEEP Property)

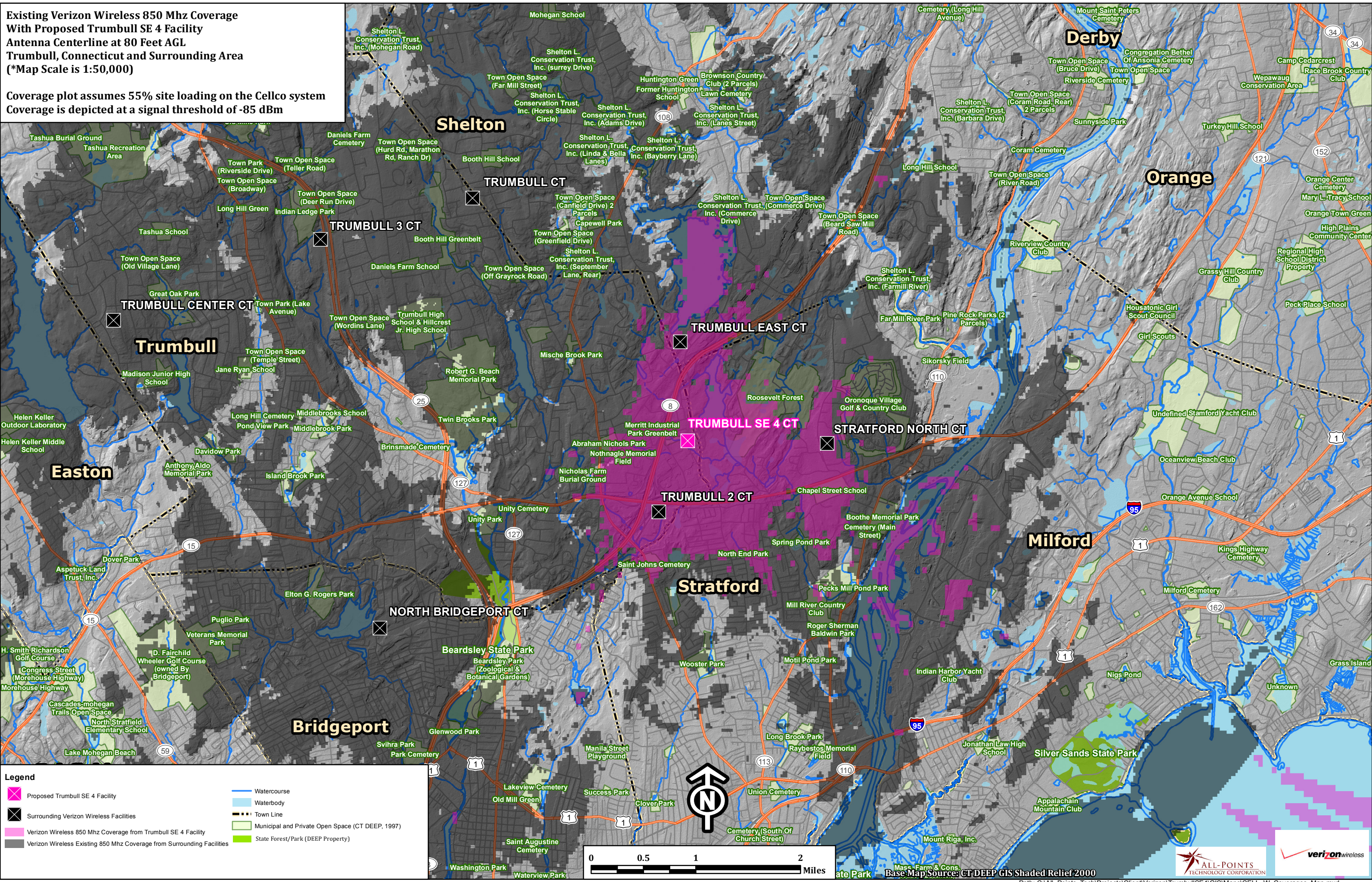


Base Map Source: CT DEEP GIS Shaded Relief 2000



**Existing Verizon Wireless 850 Mhz Coverage
With Proposed Trumbull SE 4 Facility
Antenna Centerline at 80 Feet AGL
Trumbull, Connecticut and Surrounding Area
(*Map Scale is 1:50,000)**

**Coverage plot assumes 55% site loading on the Cellco system
Coverage is depicted at a signal threshold of -85 dBm**



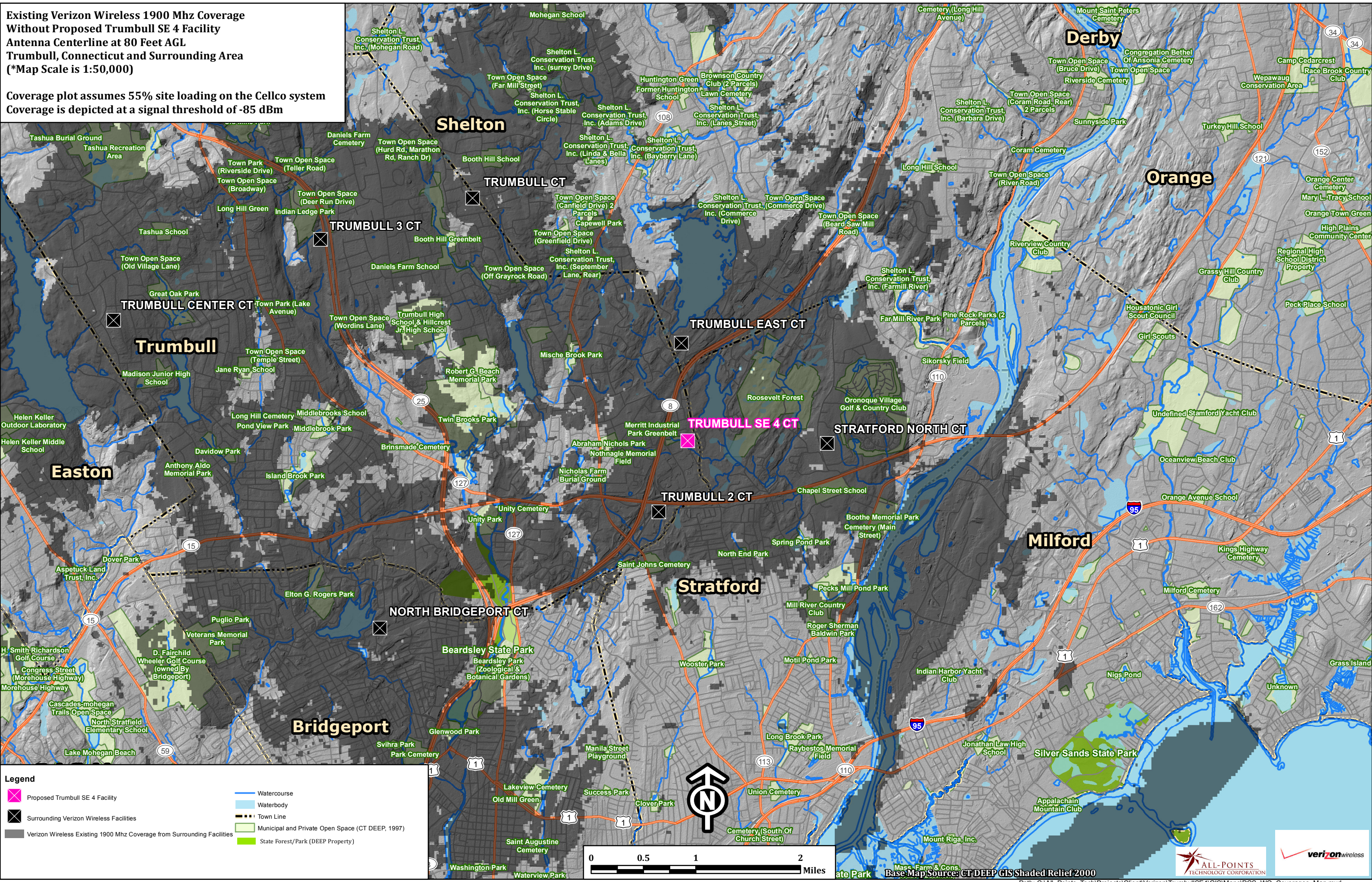
Legend

- Proposed Trumbull SE 4 Facility
- ⊗ Surrounding Verizon Wireless Facilities
- Verizon Wireless 850 Mhz Coverage from Trumbull SE 4 Facility
- Verizon Wireless Existing 850 Mhz Coverage from Surrounding Facilities
- Watercourse
- Waterbody
- Town Line
- Municipal and Private Open Space (CT DEEP, 1997)
- State Forest/Park (DEEP Property)



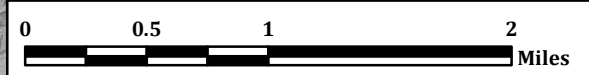
Existing Verizon Wireless 1900 Mhz Coverage Without Proposed Trumbull SE 4 Facility
Antenna Centerline at 80 Feet AGL
Trumbull, Connecticut and Surrounding Area
 (*Map Scale is 1:50,000)

Coverage plot assumes 55% site loading on the Cellco system
Coverage is depicted at a signal threshold of -85 dBm



Legend

- Proposed Trumbull SE 4 Facility
- Surrounding Verizon Wireless Facilities
- Verizon Wireless Existing 1900 Mhz Coverage from Surrounding Facilities
- Watercourse
- Waterbody
- Town Line
- Municipal and Private Open Space (CT DEEP, 1997)
- State Forest/Park (DEEP Property)

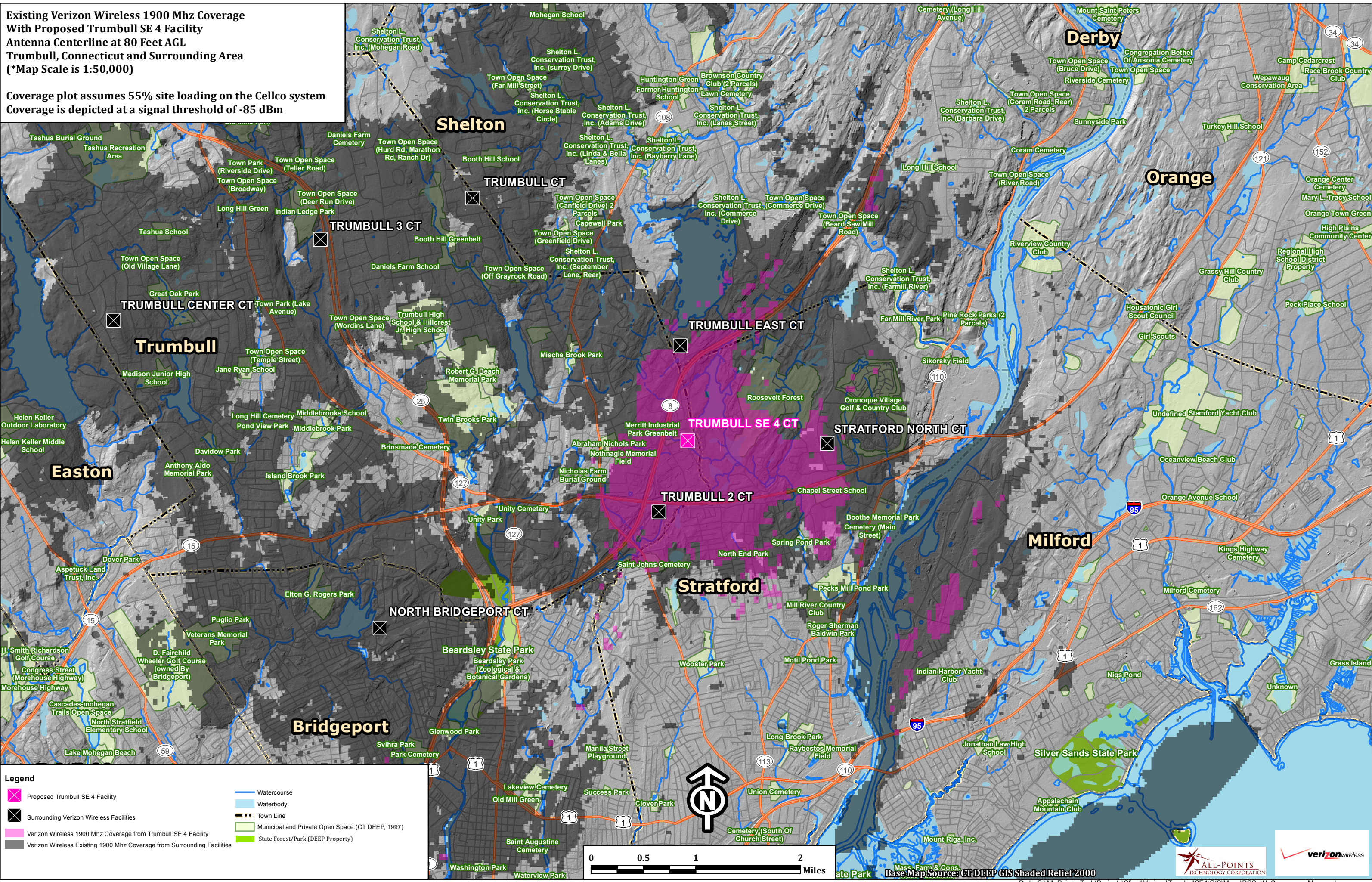


Base Map Source: CT DEEP GIS Shaded Relief 2000

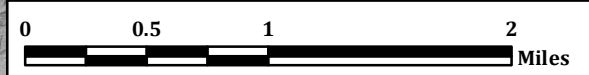


**Existing Verizon Wireless 1900 Mhz Coverage
With Proposed Trumbull SE 4 Facility
Antenna Centerline at 80 Feet AGL
Trumbull, Connecticut and Surrounding Area
(*Map Scale is 1:50,000)**

**Coverage plot assumes 55% site loading on the Cellco system
Coverage is depicted at a signal threshold of -85 dBm**



- Legend**
- Proposed Trumbull SE 4 Facility
 - ⊗ Surrounding Verizon Wireless Facilities
 - Verizon Wireless 1900 Mhz Coverage from Trumbull SE 4 Facility
 - Verizon Wireless Existing 1900 Mhz Coverage from Surrounding Facilities
 - Watercourse
 - Waterbody
 - Town Line
 - Municipal and Private Open Space (CT DEEP, 1997)
 - State Forest/Park (DEEP Property)

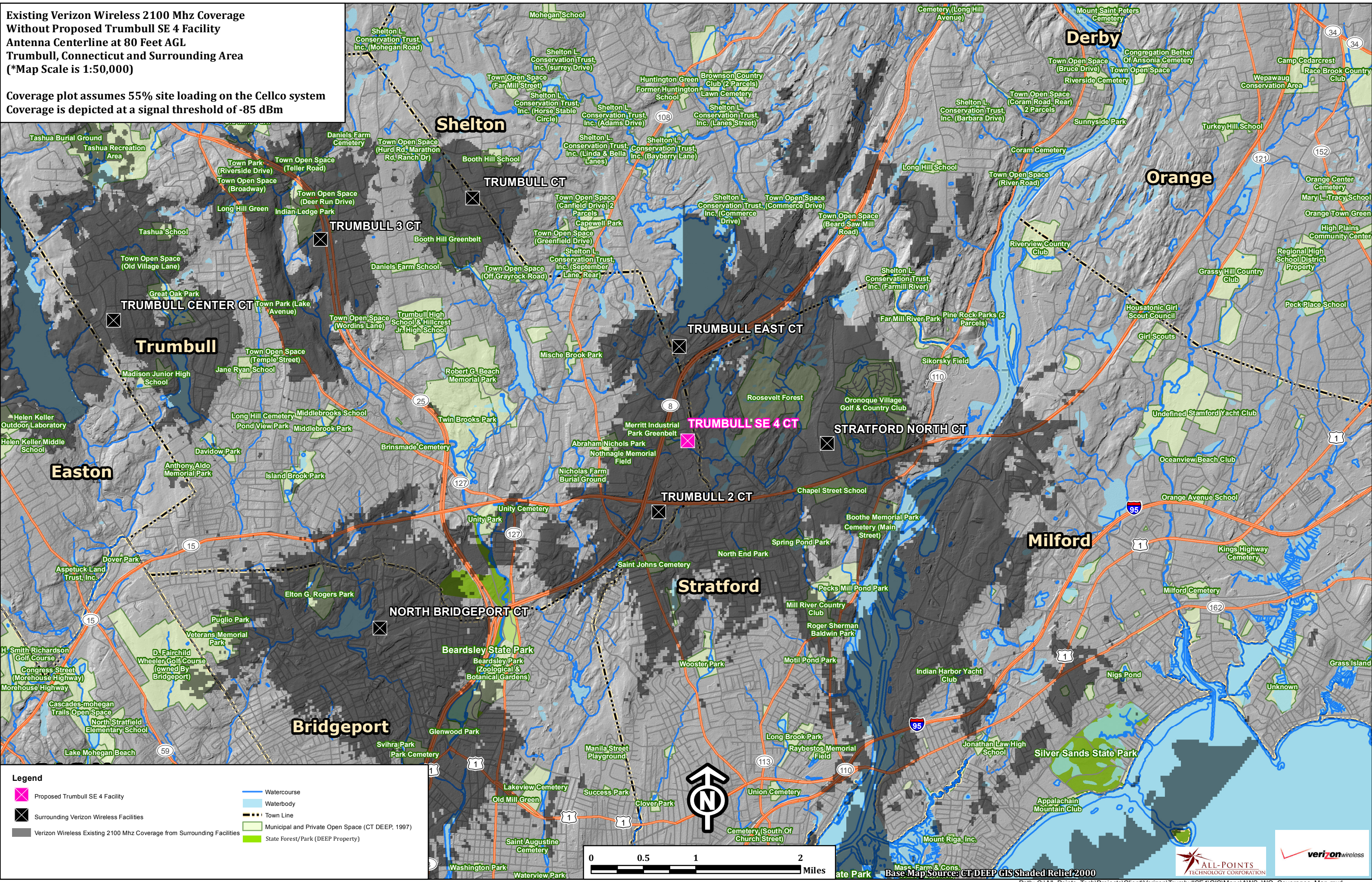


Base Map Source: CT DEEP GIS Shaded Relief 2000



Existing Verizon Wireless 2100 Mhz Coverage Without Proposed Trumbull SE 4 Facility
Antenna Centerline at 80 Feet AGL
Trumbull, Connecticut and Surrounding Area
 (*Map Scale is 1:50,000)

Coverage plot assumes 55% site loading on the Cellco system
Coverage is depicted at a signal threshold of -85 dBm



Legend

- Proposed Trumbull SE 4 Facility
- Surrounding Verizon Wireless Facilities
- Verizon Wireless Existing 2100 Mhz Coverage from Surrounding Facilities
- Watercourse
- Waterbody
- Town Line
- Municipal and Private Open Space (CT DEEP, 1997)
- State Forest/Park (DEEP Property)

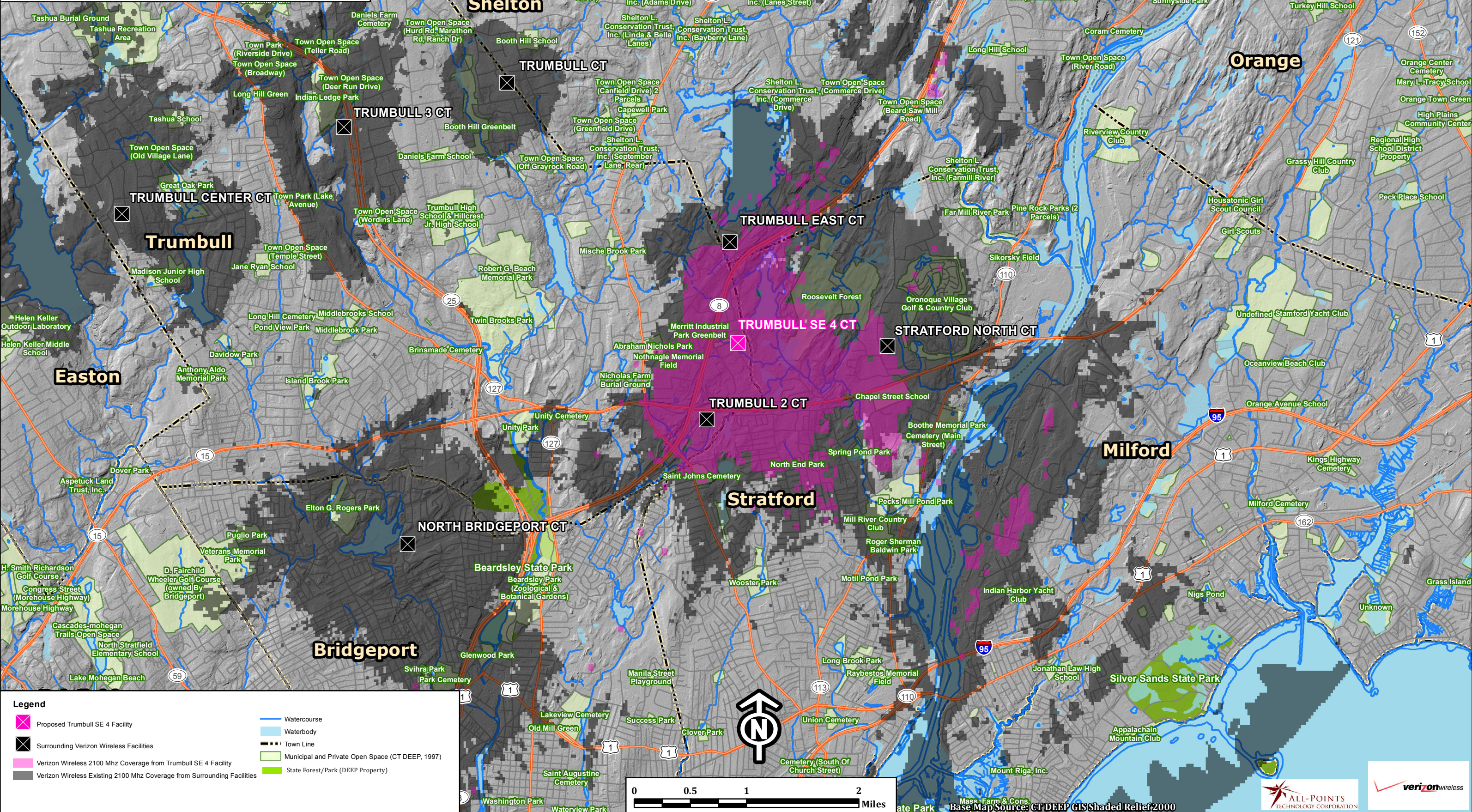


Base Map Source: CT DEEP GIS Shaded Relief 2000



**Existing Verizon Wireless 2100 Mhz Coverage
With Proposed Trumbull SE 4 Facility
Antenna Centerline at 80 Feet AGL
Trumbull, Connecticut and Surrounding Area
(*Map Scale is 1:50,000)**

Coverage plot assumes 55% site loading on the Cellco system
Coverage is depicted at a signal threshold of -85 dBm



- Legend**
- Proposed Trumbull SE 4 Facility
 - Surrounding Verizon Wireless Facilities
 - Verizon Wireless 2100 Mhz Coverage from Trumbull SE 4 Facility
 - Verizon Wireless Existing 2100 Mhz Coverage from Surrounding Facilities
 - Watercourse
 - Waterbody
 - Town Line
 - Municipal and Private Open Space (CT DEEP, 1997)
 - State Forest/Park (DEEP Property)

