

ATTACHMENT 6

C&F: 1653816.1

*Connecticut Siting Council Docket No. 427
 Response to Interrogatory Question 18
 Proposed North Atlantic Towers
 Wireless Telecommunications Facility
 Branford (CT1009-C)
 171 Short Beach Road, Branford, Connecticut*

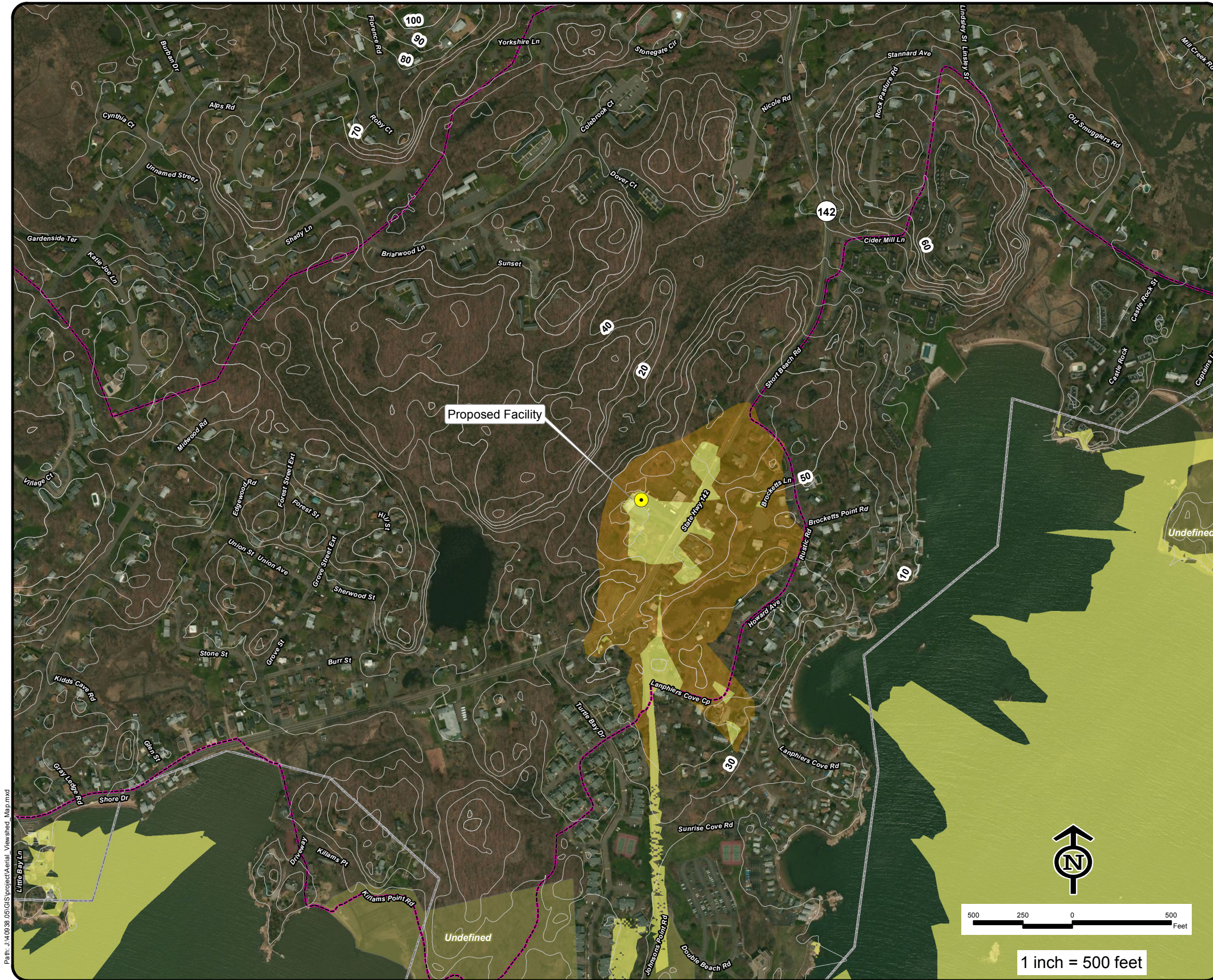
NOTE:
 - Viewshed analysis conducted using ESRI's Spatial Analyst.
 - Proposed facility height is 120 feet.
 - Existing tree canopy height estimated at 50 feet.

DATA SOURCES:
 - Digital elevation model (DEM) derived from Connecticut LiDAR-based Digital Elevation Data (collected in 2000) with a 10-foot spatial resolution produced by the University of Connecticut and the Center for Land Use Education and Research (CLEAR); 2007
 - Forest areas derived from 2004, 2006 and 2008 digital orthophotos with 0.5-foot, 1-foot and 1-meter pixel resolution; digitized by VHB, 2010
 - Base map comprised of 2010 digital orthophotos with 1-foot pixel resolution
 - Municipal and Private Open Space data layer provided by CT DEP, 1997
 - Federal Open Space data layer provided by CT DEP, 2004
 - CT DEP Property data layer provided by CT DEP, December 2010
 - CT DEP boat launches data layer provided by CT DEP, Dec 2008
 - Scenic Roads layer derived from available State and Local listings

Map Date: 6/1/2012

Legend

- | | |
|--|---|
| Proposed Tower Location | CT DEEP Property (CT DEEP, December 2010) |
| Approximate Year-Round Visibility | State Forest |
| Approximate Seasonal Visibility | State Park |
| Protected Municipal and Private Open Space (CT DEEP, 1997) | DEEP Owned Waterbody |
| Cemetery | State Park Scenic Reserve |
| Preservation | Historic Preserve |
| Conservation | Natural Area Preserve |
| Existing Preserved Open Space | Fish Hatchery |
| Recreation | Flood Control |
| General Recreation | Other |
| School | State Park Trail |
| Uncategorized | Water Access |
| Federal Open Space (CT DEEP, 2004) | Wildlife Area |
| Boat Launches (CT DEEP, Dec 2009) | Wildlife Sanctuary |
| Scenic Road (State and Local) | |
| Hiking Trail | |
| Town Line | |
| 10-Foot Contours | |



Path: J:\M0938_05\GIS\project\Aerial_Viewshed_Map.mxd



*Connecticut Siting Council Docket No. 427
 Response to Interrogatory Question 18
 Proposed North Atlantic Towers
 Wireless Telecommunications Facility
 East Haven Riverside Volunteer
 Fire Department (CT1109-D)
 82 Short Beach Road, East Haven, Connecticut*

NOTE:





- Viewshed analysis conducted using ESRI's Spatial Analyst.
- Proposed facility height is 103 feet.
- Existing tree canopy height estimated at 65 feet.

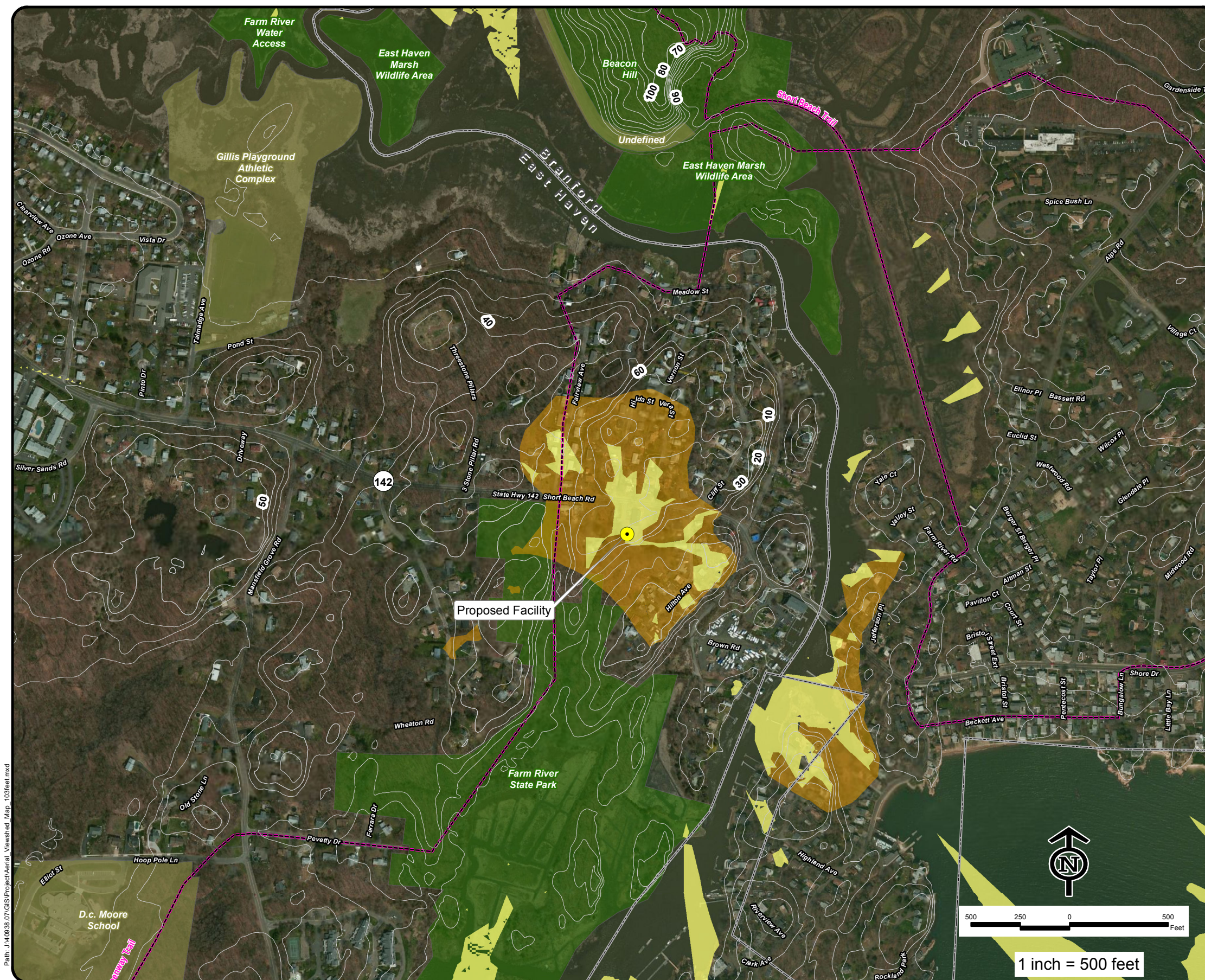
DATA SOURCES:

- Digital elevation model (DEM) derived from Connecticut LiDAR-based Digital Elevation Data (collected in 2000) with a 10-foot spatial resolution produced by the University of Connecticut and the Center for Land Use Education and Research (CLEAR); 2007
- Forest areas derived from 2004, 2006 and 2008 digital orthophotos with 0.5-foot, 1-foot and 1-meter pixel resolution; digitized by VHB, 2010
- Base map comprised of 2010 digital orthophotos with 1-foot pixel resolution
- Municipal and Private Open Space data layer provided by CT DEP, 1997
- Federal Open Space data layer provided by CT DEP, 2004
- CT DEP Property data layer provided by CT DEP, December 2010
- CT DEP boat launches data layer provided by CT DEP, Dec 2008
- Scenic Roads layer derived from available State and Local listings

Map Date: 6/1/2012

Legend

- | | |
|--|---|
|  Proposed Tower Location |  CT DEEP Property (CT DEEP, December 2010) |
|  Approximate Year-Round Visibility |  State Forest |
|  Approximate Seasonal Visibility |  State Park |
|  Protected Municipal and Private Open Space (CT DEEP, 1997) |  DEEP Owned Waterbody |
|  Cemetery |  State Park Scenic Reserve |
|  Preservation |  Historic Preserve |
|  Conservation |  Natural Area Preserve |
|  Existing Preserved Open Space |  Fish Hatchery |
|  Recreation |  Flood Control |
|  General Recreation |  Other |
|  School |  State Park Trail |
|  Uncategorized |  Water Access |
| |  Wildlife Area |
| |  Wildlife Sanctuary |
| |  Federal Open Space (CT DEEP, 2004) |
| |  Boat Launches (CT DEEP, Dec 2009) |
| |  Scenic Road (State and Local) |
| |  Hiking Trail |
| |  Town Line |
| |  10-Foot Contours |



Path: J:\M\0938_07\GIS\Project\Aerial_Viewshed_Map_103feet.mxd

