

ATTACHMENT 5

PART 5



NORTH ATLANTIC TOWERS, LLC and NEW CINGULAR WIRELESS PCS, LLC ("AT&T")
RESPONSES TO CONNECTICUT SITING COUNCIL INTERROGATORIES SET II

Q8. Please quantify how much of the proposed tower would be visible from each photosimulation location at 150 feet and 110 feet.

Approximate Amount of Tower Visible Above Treeline MONOPINE (feet)		
Photosimulation Location*	150' Monopine	110' Monopine
PH-1	50'	10'
PH-2	50'	10'
PH-3	50'	10'
PH-4	55'	15'
PH-5	55'	15'
PH-6	35'	Not Visible
PH-7	55'	15'
PH-8	55'	15'
PH-9	65'	25'
PH-10	Not visible from this location	
PH-11	50'	10'
PH-12	55'	15'
PH-13	Not visible from this location	
PH-14	55'	15'
PH-15	20'	Not Visible
PH-16	Not visible from this location	
PH-17	Not visible from this location	
PH-18	Not visible from this location	
PH-19	60'	20'
PH-20	45'	Not Visible
PH-21	Not visible from this location	
PH-22	Not visible from this location	
PH-23	55'	15'
PH-24	Not visible from this location	
PH-25	45'	Not Visible
PH-26	40'	Not Visible
PH-27	40'	Not Visible
PH-28	50'	10'

*Photosimulation locations as presented in Infinigy's *Leaf-Off Balloon Float and Field Reconnaissance Survey* dated December 20, 2011.



Existing View

Simulated
110' Monopine

Approximately 10 feet of the proposed tower is anticipated to be visible through the trees.



Site Location

Route 198
Woodstock, CT 06282

Woodstock - Photo 1 (12/2/11)

CT1182

110' Monopine Simulation

View from along east side of Route 171, adjacent to residence at 3 Barber Road, approx. 0.51 miles East-northeast of the proposed site. Focal length approximately 55 mm.



Simulated
110' Monopine

Approximately 10 feet of the proposed tower is anticipated to be visible above the tree line.

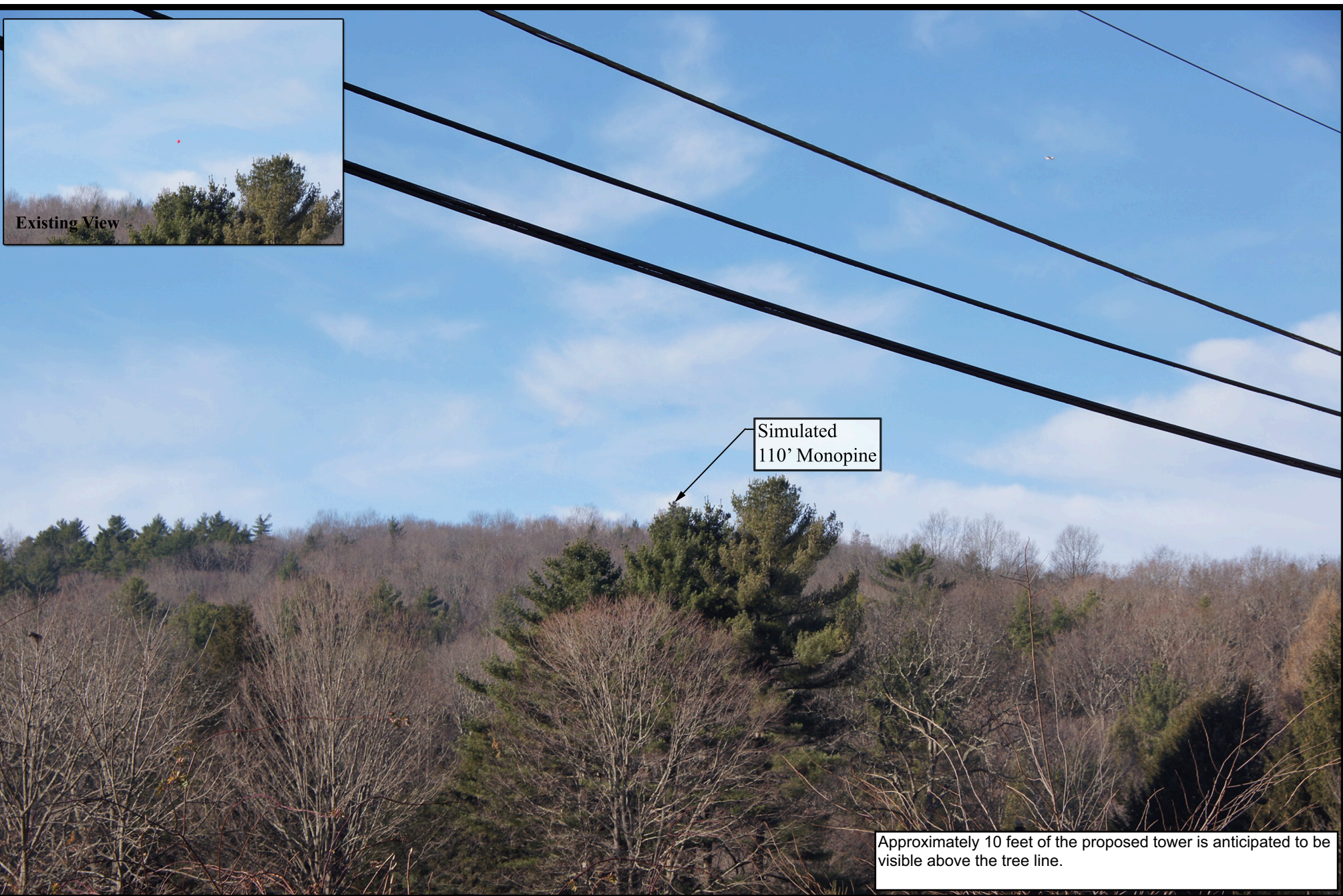
infinigy
engineering



Site Location
Route 198
Woodstock, CT 06282

Woodstock - Photo 2 (12/2/11)
CT1182

110' Monopine Simulation
View from Shaw Road, adjacent to driveway entrance for residence at 15 Shaw Road, approx. 0.49 miles Northeast of the proposed site. Focal length approximately 55 mm.



Approximately 10 feet of the proposed tower is anticipated to be visible above the tree line.



Existing View

Simulated
110' Monopine

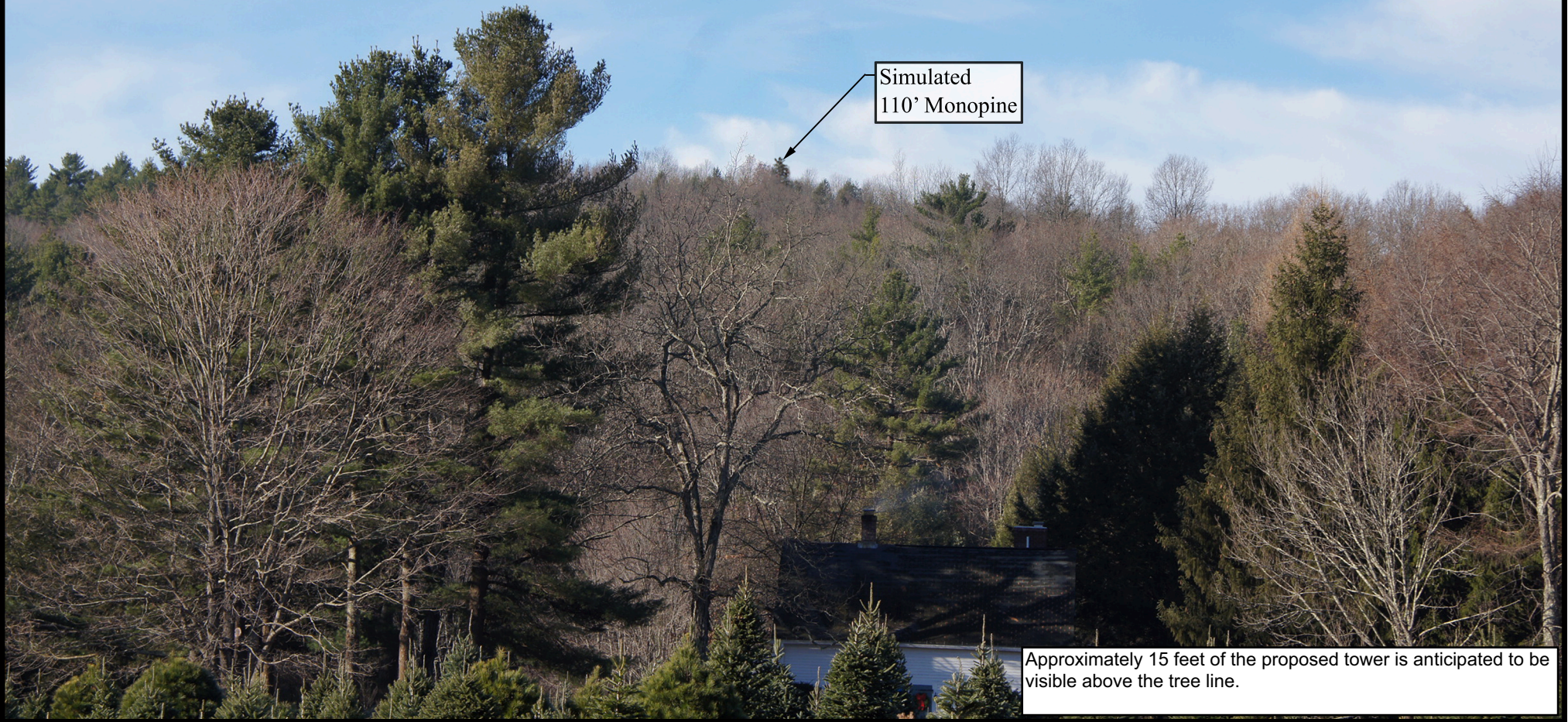
Approximately 15 feet of the proposed tower is anticipated to be visible above the tree line.

infinigy
engineering



Site Location
Route 198
Woodstock, CT 06282

Woodstock - Photo 4 (12/2/11)
CT1182
110' Monopine Simulation
View from the intersection of Shaw Road and Rt. 171, approx.
0.55 miles East-Northeast of the proposed site. Focal length
approximately 55 mm.





Existing View

Simulated
110' Monopine

Approximately 15 feet of the proposed tower is anticipated to be visible above the tree line.

infinigy
engineering



Site Location
Route 198
Woodstock, CT 06282

Woodstock - Photo 7 (12/2/11)
CT1182
110' Monopine Simulation
View from in front of 1651 Rt. 171, approx. 0.54 miles
East-Northeast of the proposed site. Focal length
approximately 55 mm.