

**PHOTOGRAPHIC DOCUMENTATION**

VIEW	LOCATION	ORIENTATION	DISTANCE TO SITE	VISIBILITY
5	ISLAND BROOK PARK	SOUTHEAST	0.40 MILE +/-	YEAR-ROUND

# PHOTOGRAPHIC SIMULATION

VIEW	LOCATION	ORIENTATION	DISTANCE TO SITE	VISIBILITY
5	ISLAND BROOK PARK	SOUTHEAST	0.40 MILE +/-	YEAR-ROUND



PHOTOGRAPHIC DOCUMENTATION



VIEW	LOCATION	ORIENTATION	DISTANCE TO SITE	VISIBILITY
6	ROSELAND TERRACE AT MAIN STREET	SOUTHEAST	0.31 MILE +/-	YEAR-ROUND



# PHOTOGRAPHIC SIMULATION



VIEW	LOCATION	ORIENTATION	DISTANCE TO SITE	VISIBILITY
6	ROSELAND TERRACE AT MAIN STREET	SOUTHEAST	0.31 MILE +/-	YEAR-ROUND



# PHOTOGRAPHIC SIMULATION

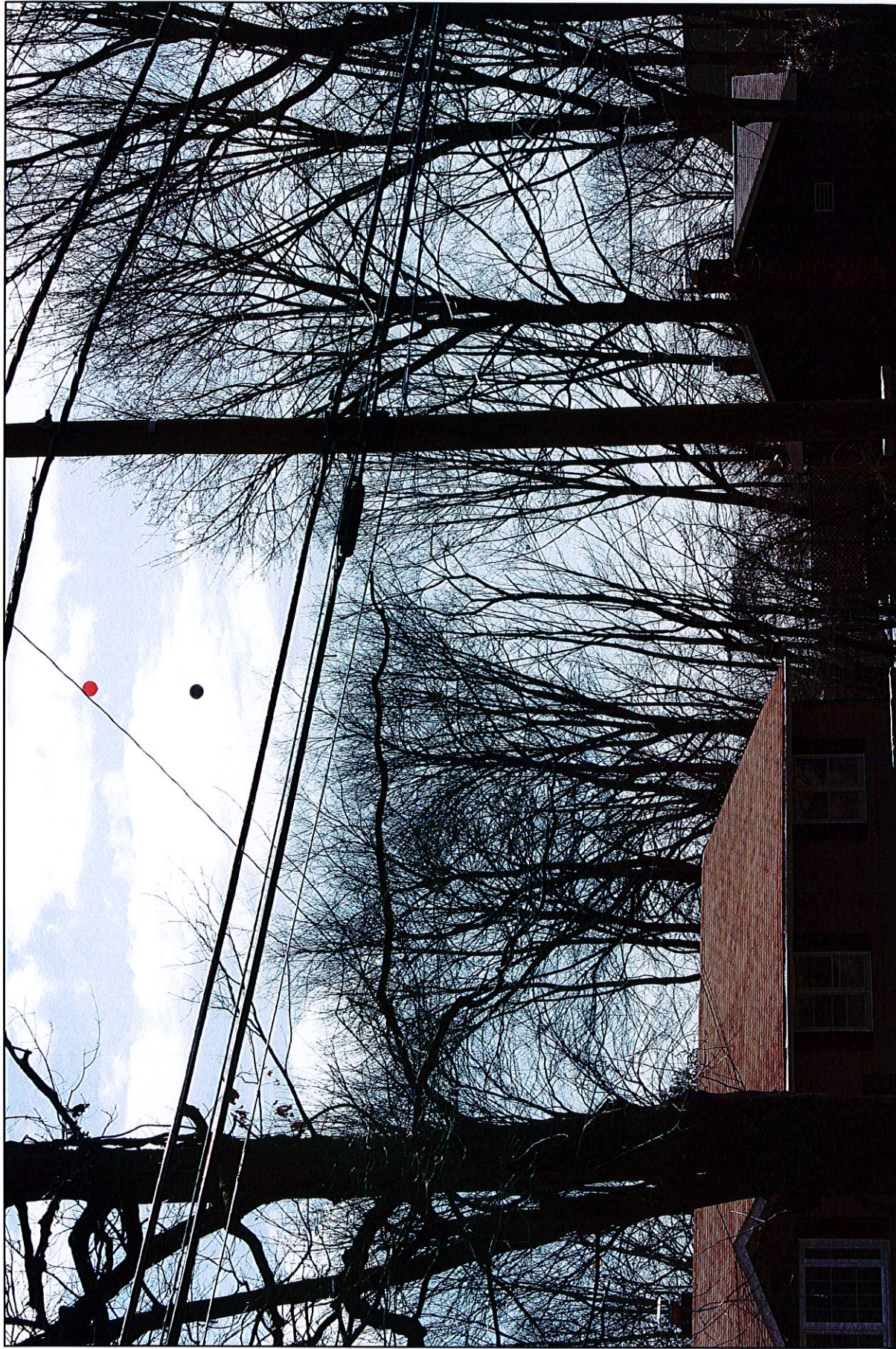


VIEW	LOCATION	ORIENTATION	DISTANCE TO SITE	VISIBILITY
6	ROSELAND TERRACE AT MAIN STREET	SOUTHEAST	0.31 MILE +/-	YEAR-ROUND

c:\m\001\40505\_14\graphics\FIGURES\_40505\_14\_Photos.m



PHOTOGRAPHIC DOCUMENTATION



VIEW	LOCATION	ORIENTATION	DISTANCE TO SITE	VISIBILITY
7	KILLIAN AVENUE AT MAIN STREET	SOUTHEAST	0.12 MILE +/-	YEAR-ROUND

c:\model\40503\_14\graphics\FIGURES\40503\_14\_Photos.m



**PHOTOGRAPHIC SIMULATION**



VIEW	LOCATION	ORIENTATION	DISTANCE TO SITE	VISIBILITY
7	KILLIAN AVENUE AT MAIN STREET	SOUTHEAST	0.12 MILE +/-	YEAR-ROUND

cm:\data\40505\_14\graphics\FIGURES\_40505\_14\_Photos.m



**PHOTOGRAPHIC SIMULATION**



VIEW	LOCATION	ORIENTATION	DISTANCE TO SITE	VISIBILITY
7	KILLIAN AVENUE AT MAIN STREET	SOUTHEAST	0.12 MILE +/-	YEAR-ROUND

ctm00a1:40505\_14\graphics\FIGURES\40505\_14\_PhotoSim



PHOTOGRAPHIC DOCUMENTATION



VIEW	LOCATION	ORIENTATION	DISTANCE TO SITE	VISIBILITY
8	MAIN STREET SOUTH OF CHESTNUT HILL ROAD	EAST	0.09 MILE +/-	YEAR-ROUND



**PHOTOGRAPHIC SIMULATION**

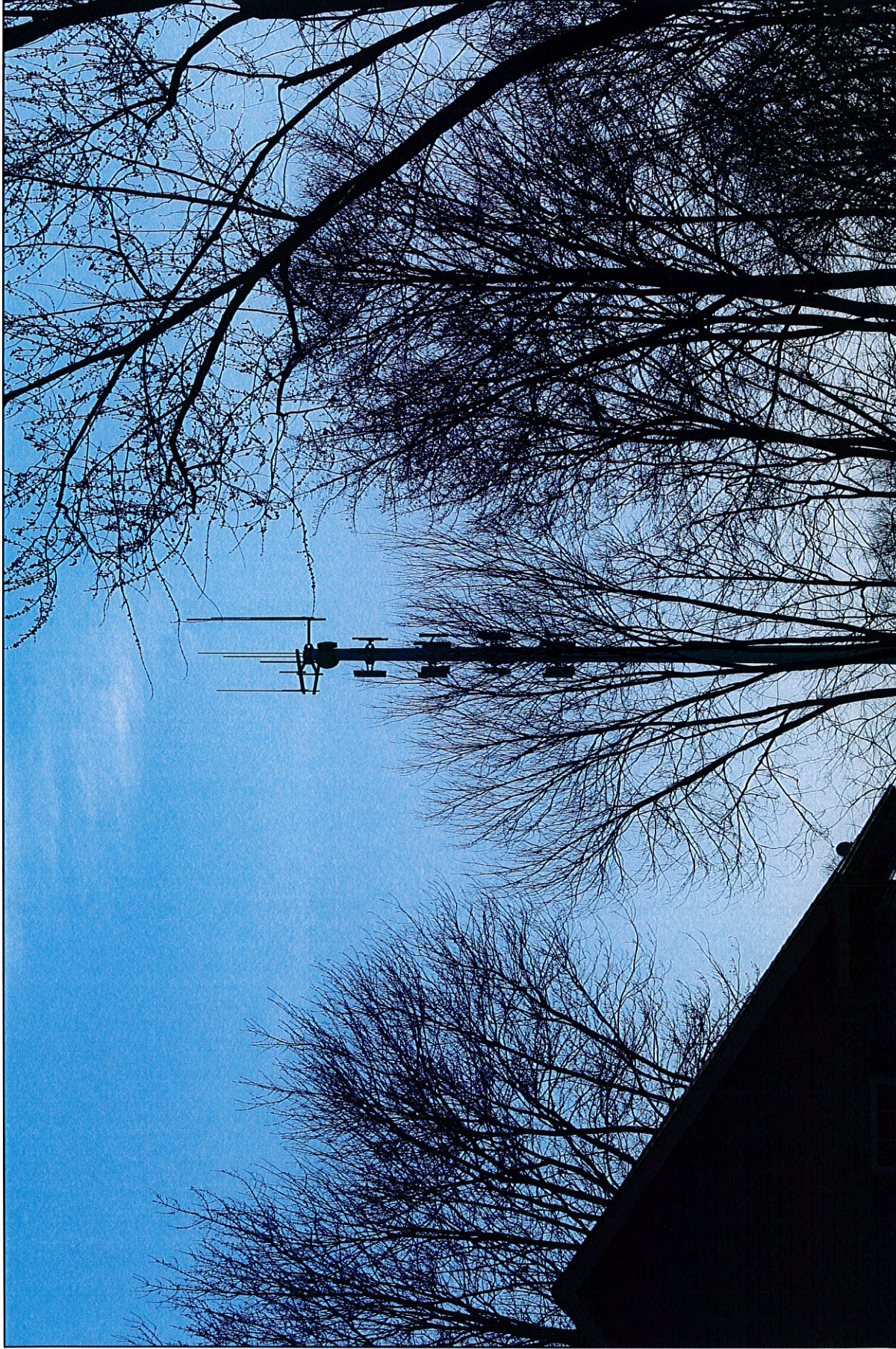


VIEW	LOCATION	ORIENTATION	DISTANCE TO SITE	VISIBILITY
8	MAIN STREET SOUTH OF CHESTNUT HILL ROAD	EAST	0.09 MILE +/-	YEAR-ROUND

ctm00a140505\_14\graphics\FIGURES\40505\_14\_Proxim



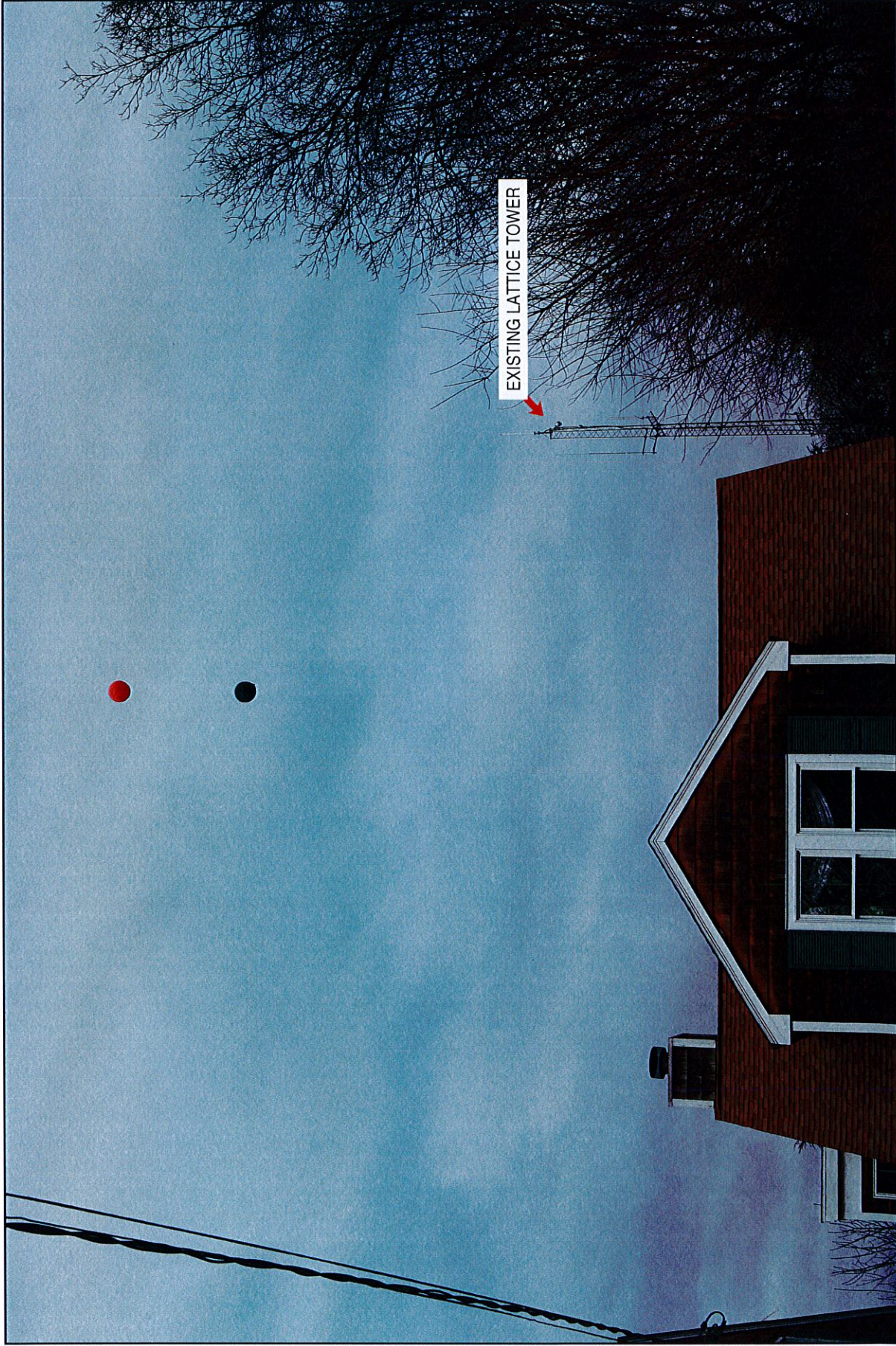
# PHOTOGRAPHIC SIMULATION



VIEW	LOCATION	ORIENTATION	DISTANCE TO SITE	VISIBILITY
8	MAIN STREET SOUTH OF CHESTNUT HILL ROAD	EAST	0.09 MILE +/-	YEAR-ROUND



PHOTOGRAPHIC DOCUMENTATION



VIEW	LOCATION	ORIENTATION	DISTANCE TO SITE	VISIBILITY
9	MERWIN STREET ADJACENT TO HOUSE #20	NORTH	0.07 MILE +/-	YEAR-ROUND

c:\mdata\40505\_14\graphics\FIGURES\40505\_14\_Photos.m



# PHOTOGRAPHIC SIMULATION

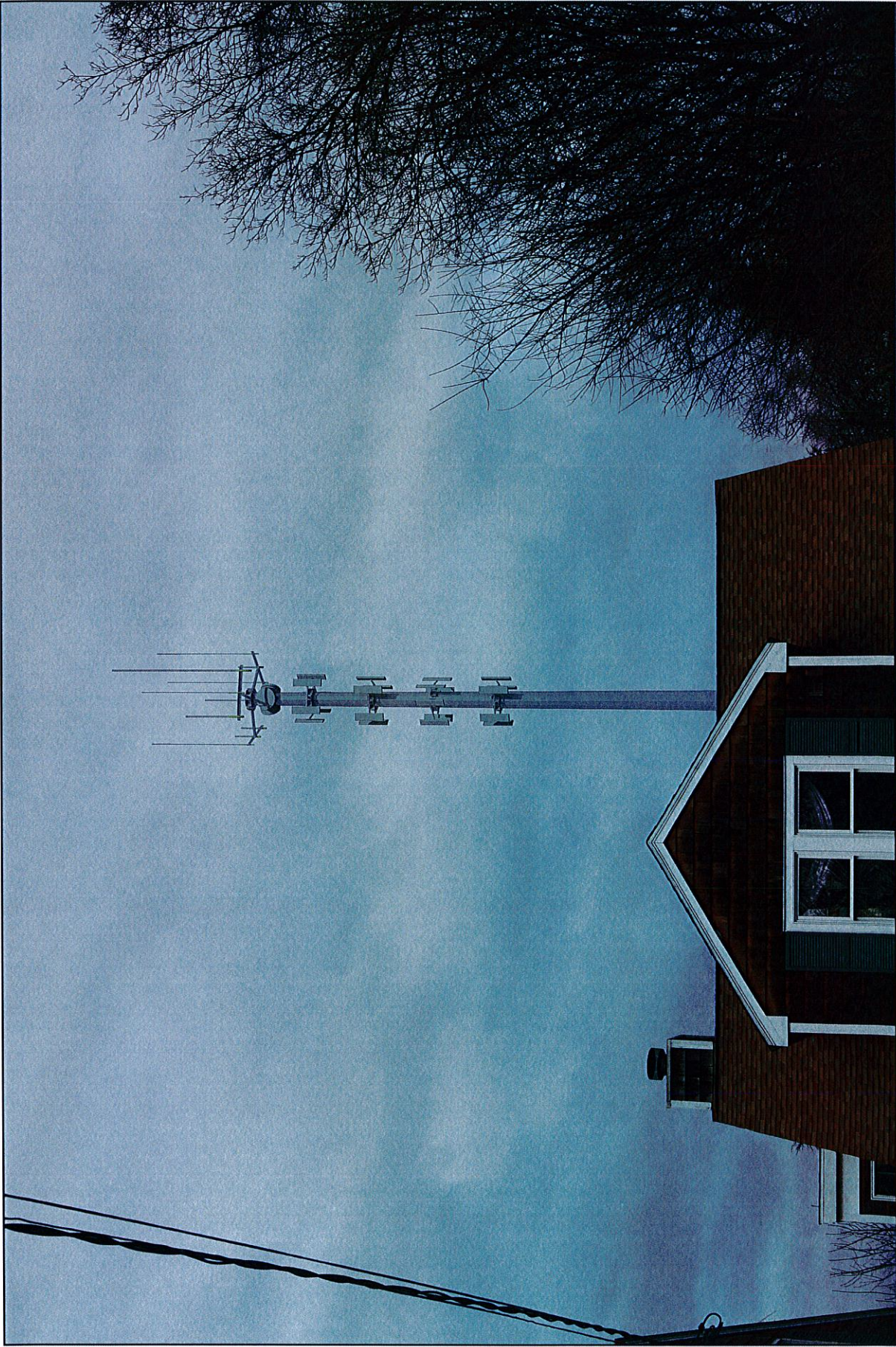


VIEW	LOCATION	ORIENTATION	DISTANCE TO SITE	VISIBILITY
9	MERWIN STREET ADJACENT TO HOUSE #20	NORTH	0.07 MILE +/-	YEAR-ROUND

c:\mddat\40505\_14\graphics\FIGURES\40505\_14\_Photos.m



# PHOTOGRAPHIC SIMULATION



VIEW	LOCATION	ORIENTATION	DISTANCE TO SITE	VISIBILITY
9	MERWIN STREET ADJACENT TO HOUSE #20	NORTH	0.07 MILE +/-	YEAR-ROUND



PHOTOGRAPHIC DOCUMENTATION



VIEW	LOCATION	ORIENTATION	DISTANCE TO SITE	VISIBILITY
10	KOGER ROAD ADJACENT TO HOUSE #17 (24mm focal length)	NORTHWEST	0.08 MILE +/-	YEAR-ROUND

c:\media\140505\_14\graphics\FIGURES\40505\_14\_Photos.m



# PHOTOGRAPHIC SIMULATION



VIEW	LOCATION	ORIENTATION	DISTANCE TO SITE	VISIBILITY
10	KOGER ROAD ADJACENT TO HOUSE #17 (24mm focal length)	NORTHWEST	0.08 MILE +/-	YEAR-ROUND



# PHOTOGRAPHIC SIMULATION



VIEW	LOCATION	ORIENTATION	DISTANCE TO SITE	VISIBILITY
10	KOGER ROAD ADJACENT TO HOUSE #17 (24mm focal length)	NORTHWEST	0.08 MILE +/-	YEAR-ROUND



PHOTOGRAPHIC DOCUMENTATION



VIEW	LOCATION	ORIENTATION	DISTANCE TO SITE	VISIBILITY
11	EDISON ROAD ADJACENT TO HOUSE #220	SOUTHWEST	0.18 MILE +/-	YEAR-ROUND



**PHOTOGRAPHIC SIMULATION**



VIEW	LOCATION	ORIENTATION	DISTANCE TO SITE	VISIBILITY
11	EDISON ROAD ADJACENT TO HOUSE #220	SOUTHWEST	0.18 MILE +/-	YEAR-ROUND



**PHOTOGRAPHIC SIMULATION**



VIEW	LOCATION	ORIENTATION	DISTANCE TO SITE	VISIBILITY
11	EDISON ROAD ADJACENT TO HOUSE #220	SOUTHWEST	0.18 MILE +/-	YEAR-ROUND



PHOTOGRAPHIC DOCUMENTATION



VIEW	LOCATION	ORIENTATION	DISTANCE TO SITE	VISIBILITY
12	ELAINE STREET ADJACENT TO HOUSE #35	SOUTHWEST	0.30 MILE +/-	YEAR-ROUND



# PHOTOGRAPHIC SIMULATION



VIEW	LOCATION	ORIENTATION	DISTANCE TO SITE	VISIBILITY
12	ELAINE STREET ADJACENT TO HOUSE #35	SOUTHWEST	0.30 MILE +/-	YEAR-ROUND



# PHOTOGRAPHIC SIMULATION



VIEW	LOCATION	ORIENTATION	DISTANCE TO SITE	VISIBILITY
12	ELAINE STREET ADJACENT TO HOUSE #35	SOUTHWEST	0.30 MILE +/-	YEAR-ROUND

c:\mtdat\40505\_14\graphics\FIGURES\40505\_14\_Photosim