

STATE OF CONNECTICUT
CONNECTICUT SITING COUNCIL

IN RE: :
 :
APPLICATION OF CELLCO PARTNERSHIP : DOCKET NO. 415
D/B/A VERIZON WIRELESS FOR A :
CERTIFICATE OF ENVIRONMENTAL :
COMPATIBILITY AND PUBLIC NEED FOR :
THE CONSTRUCTION, MAINTENANCE :
AND OPERATION OF A WIRELESS :
TELECOMMUNICATIONS FACILITY AT 87 :
WEST QUASSET ROAD, WOODSTOCK, :
CONNECTICUT : SEPTEMBER 20, 2011

PRE-FILED TESTIMONY OF MARK BRAUER

Q.1. Please identify yourself and describe your position.

- A. My name is Mark Brauer and I am radio frequency (“RF”) engineer with Cellco Partnership d/b/a Verizon Wireless (“Cellco”). My principal responsibilities include radio frequency design for Cellco’s wireless network throughout Connecticut, including the relocation of Cellco’s existing Woodstock Facility at 87 West Quasset Road in Woodstock, CT. Prior to joining Cellco, I worked as an RF engineer designing wireless networks for Clearwire, Pocket Communications and Sprint Nextel throughout Connecticut and western Massachusetts.

Q.2. Can you briefly describe Cellco’s existing and proposed Woodstock Facility at 87 West Quasset Road in Woodstock, CT?

- A. As discussed in the application and during the Council’s May 26, 2011 public hearing, Cellco’s existing Woodstock Facility consists of two omni-directional whip antennas

attached near the top of an existing 140' light-weight lattice tower owned by American Tower Corporation ("ATC"). The ATC tower is located in the southeast corner of a 30 acre parcel known as Quasset Hill Farm at 87 West Quasset Road in Woodstock (the "Property"). The existing Woodstock Facility currently provides wireless service in southeast Woodstock at cellular (850 MHz) frequencies only. This is Cellco's only non-sectorized cell site in the entire New England region. The proposed Woodstock Facility upgrades described in the application will allow Cellco to provide improved wireless services in southeast Woodstock in each of its licensed frequencies (cellular, PCS and LTE), with its antennas in a sectorized configuration.

Q.3. Are you familiar with and have you evaluated the ATC alternative tower location on the Property?

- A. Yes. As I understand it, and based on plans submitted to the Council on June 27, 2011 and July 26, 2011, ATC has asked the Council to consider an alternative tower location in the southeast corner of the Property, about 20' north of its existing 140' lattice tower. ATC says that it would construct a new 140' monopole tower at this location. The ground elevation at the ATC tower site is about eight (8) feet lower than the ground elevation at Cellco's tower site in the central portion of the Property.

Q.4. Could Cellco satisfy its coverage objectives in the area utilizing a 140' monopole tower at the ATC alternative location?

- A. No. In order to provide coverage comparable to that which Cellco can achieve from the proposed 150' tower described in the Docket No. 415 application, I would need to install antennas at a centerline height of 160' above ground level on a tower at the ATC alternative

location in the southeast corner of the Property.

Q.5. Please produce coverage plots showing Cellco's coverage from the ATC alternate tower location with Cellco antennas located at the 140' and 160' above ground level.

A. Plots showing Cellco's coverage from the ATC alternative tower location at 140' above ground level are included behind Tab 1. Plots showing Cellco's coverage from the ATC alternative tower location at 160' above ground level are included behind Tab 2. At 140', a series of coverage gaps, totaling 0.4 miles along portions of Route 171 and 0.3 miles along portions of Route 169 in southeast Woodstock would remain.

Q.6. Does this conclude your testimony?


A. Yes.

The statements above are true and complete, to the best of my knowledge.

9-19-11
Date


Mark Brauer

Subscribed and sworn before me this 19th day of September, 2010.


Kenneth C. Baldwin
Commissioner of the Superior Court

CERTIFICATION

I hereby certify that on this 20th day of September, 2011, a copy of the foregoing was sent,
postage prepaid, to the following parties and intervenors:

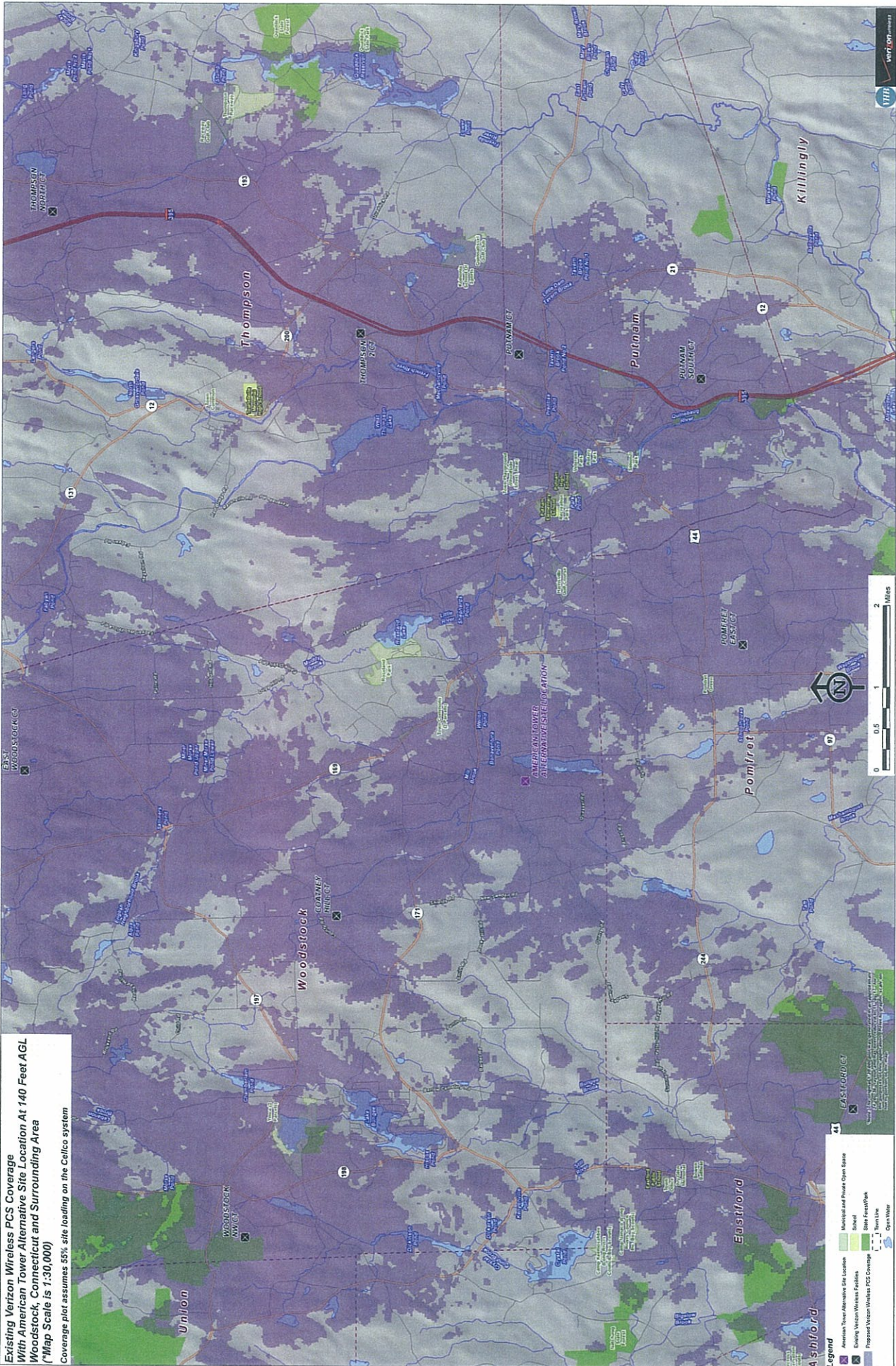
Brandon Ruotolo, Zoning Attorney
American Tower Corporation
10 Presidential Way
Woburn, MA 01801


Kenneth C. Baldwin

TAB 1

**Existing Verizon Wireless PCS Coverage
With American Tower Alternative Site Location At 140 Feet AGL
Woodstock, Connecticut and Surrounding Area
(*Map Scale is 1:30,000)**

Coverage plot assumes 55% site loading on the Calico system

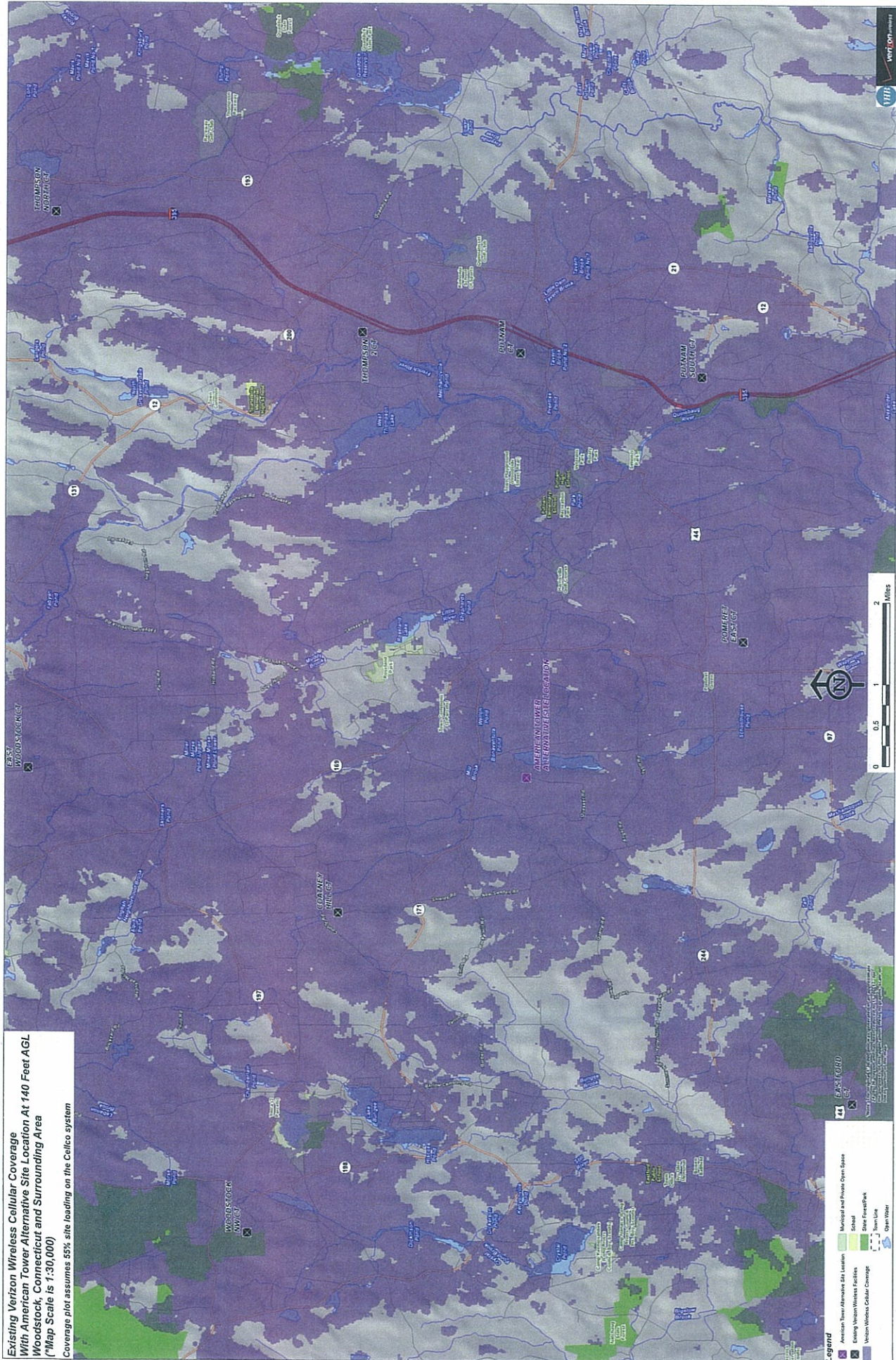


- Legend**
- X American Tower Alternative Site Location
 - Existing Verizon Wireless Facilities
 - Proposed Verizon Wireless PCS Coverage
 - Municipal and Private Open Space
 - School
 - State Forest/Park
 - Town Line
 - Open Water



VT01
WVZ007-000001

Existing Verizon Wireless Cellular Coverage
 With American Tower Alternative Site Location At 140 Feet AGL
 Woodstock, Connecticut and Surrounding Area
 (*Map Scale is 1:30,000)
 Coverage plot assumes 65% site loading on the Celco system

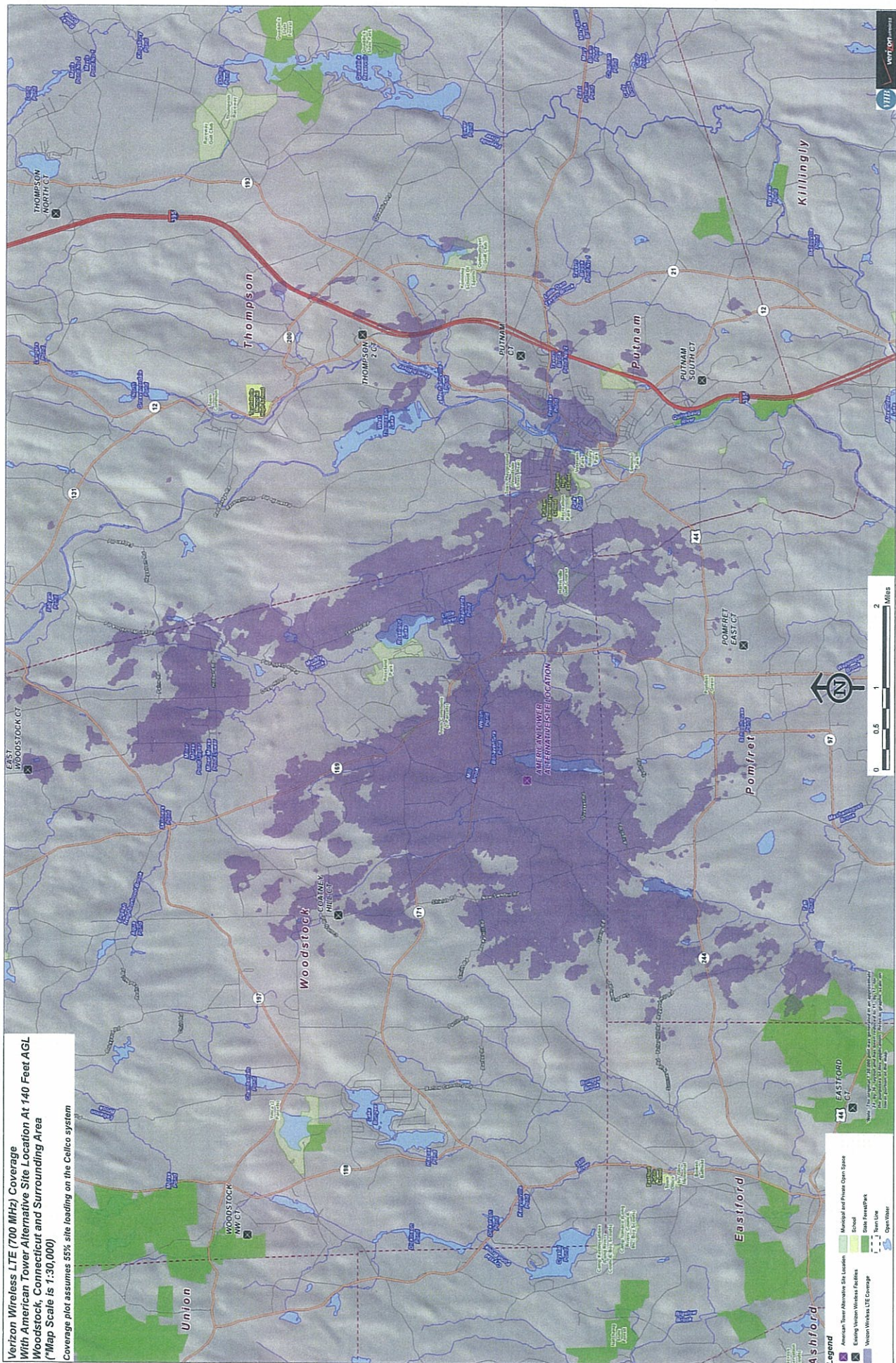


Legend

- American Tower Alternative Site Location
- Existing Verizon Wireless Facilities
- Verizon Wireless Cellular Coverage
- Municipal and Private Open Space
- School
- State Forest/Park
- Iron Line
- Open Water



Verizon Wireless LTE (700 MHz) Coverage
 With American Tower Alternative Site Location At 140 Feet AGL
 Woodstock, Connecticut and Surrounding Area
 (*Map Scale is 1:30,000)
 Coverage plot assumes 55% site loading on the Celco system

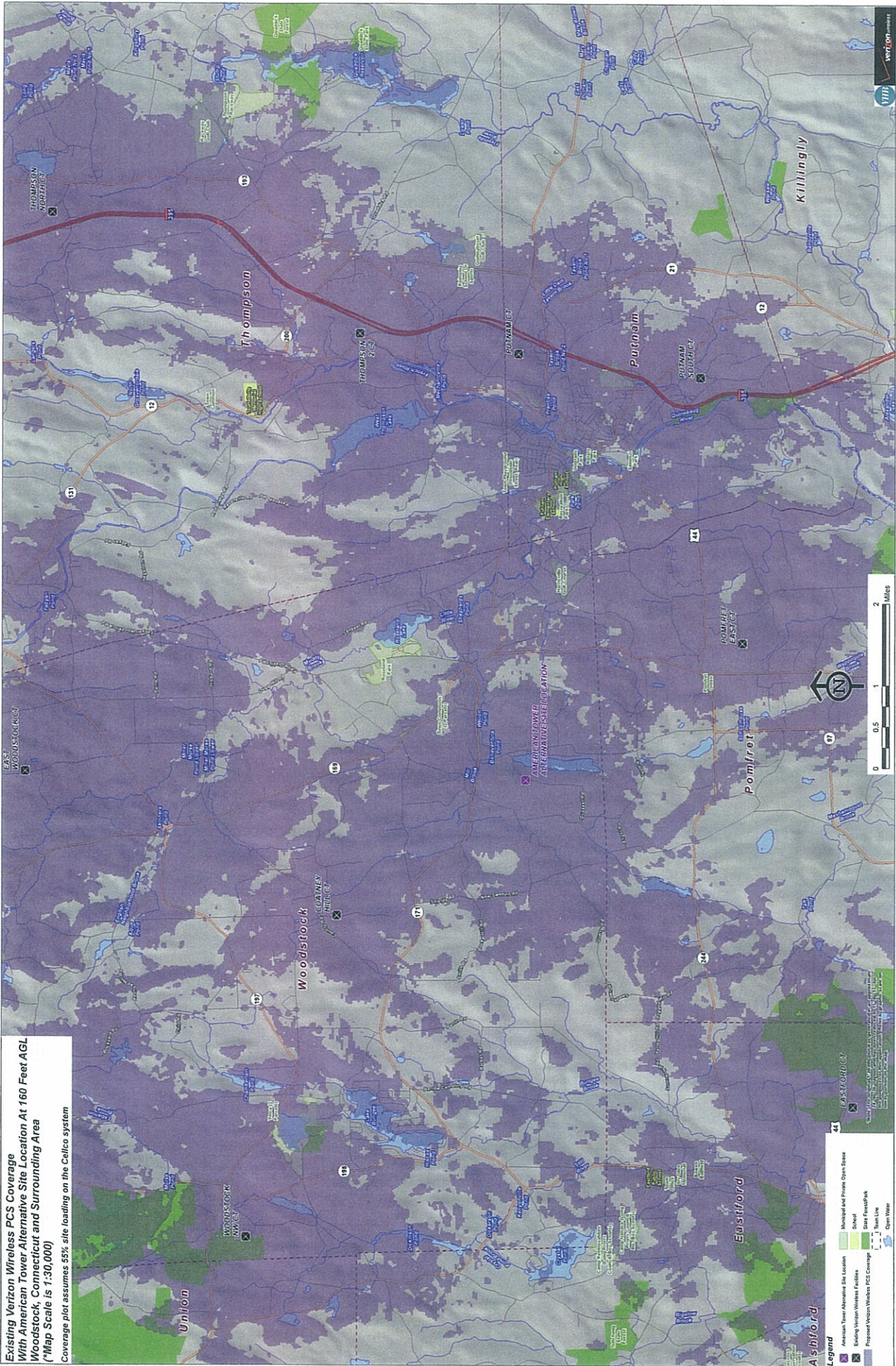


- Legend**
- American Tower Alternative Site Location
 - Municipal and Private Open Space
 - School
 - Existing Verizon Wireless Facilities
 - State Forest/Park
 - Verizon Wireless LTE Coverage
 - 1 - 2 Hours Drive
 - Open Water



TAB 2

Existing Verizon Wireless PCS Coverage
 With American Tower Alternative Site Location At 160 Feet AGL
 Woodstock, Connecticut and Surrounding Area
 (Map Scale is 1:30,000)
 Coverage plot assumes 55% site loading on the Cellico system

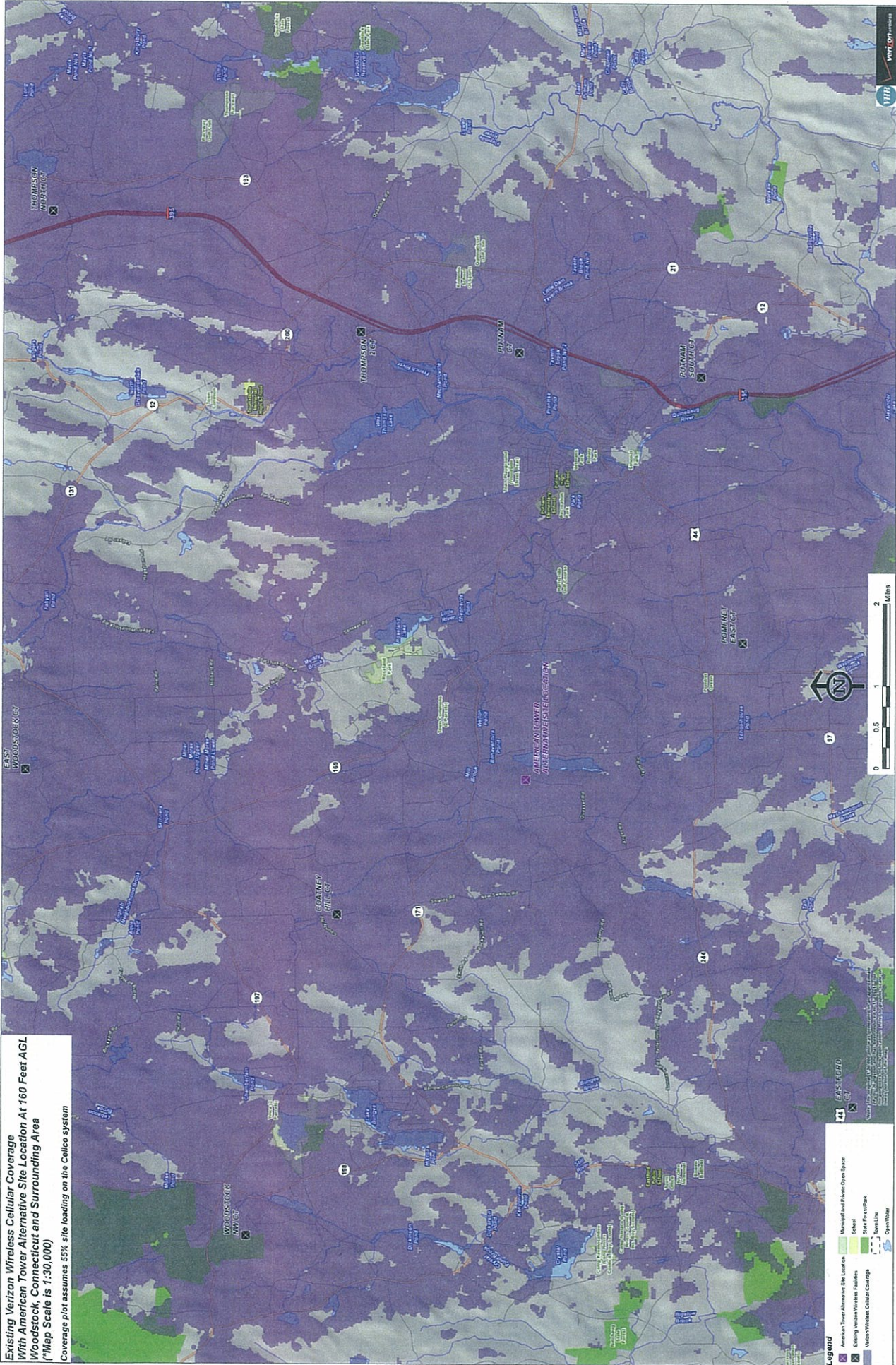


- Legend**
- American Tower Alternative Site Location
 - Municipal and Private Open Space
 - School
 - Existing Verizon Wireless Facilities
 - State Forest/Park
 - Proposed Verizon Wireless PCS Coverage
 - Town Line
 - Open Water



WVZ
 11/11

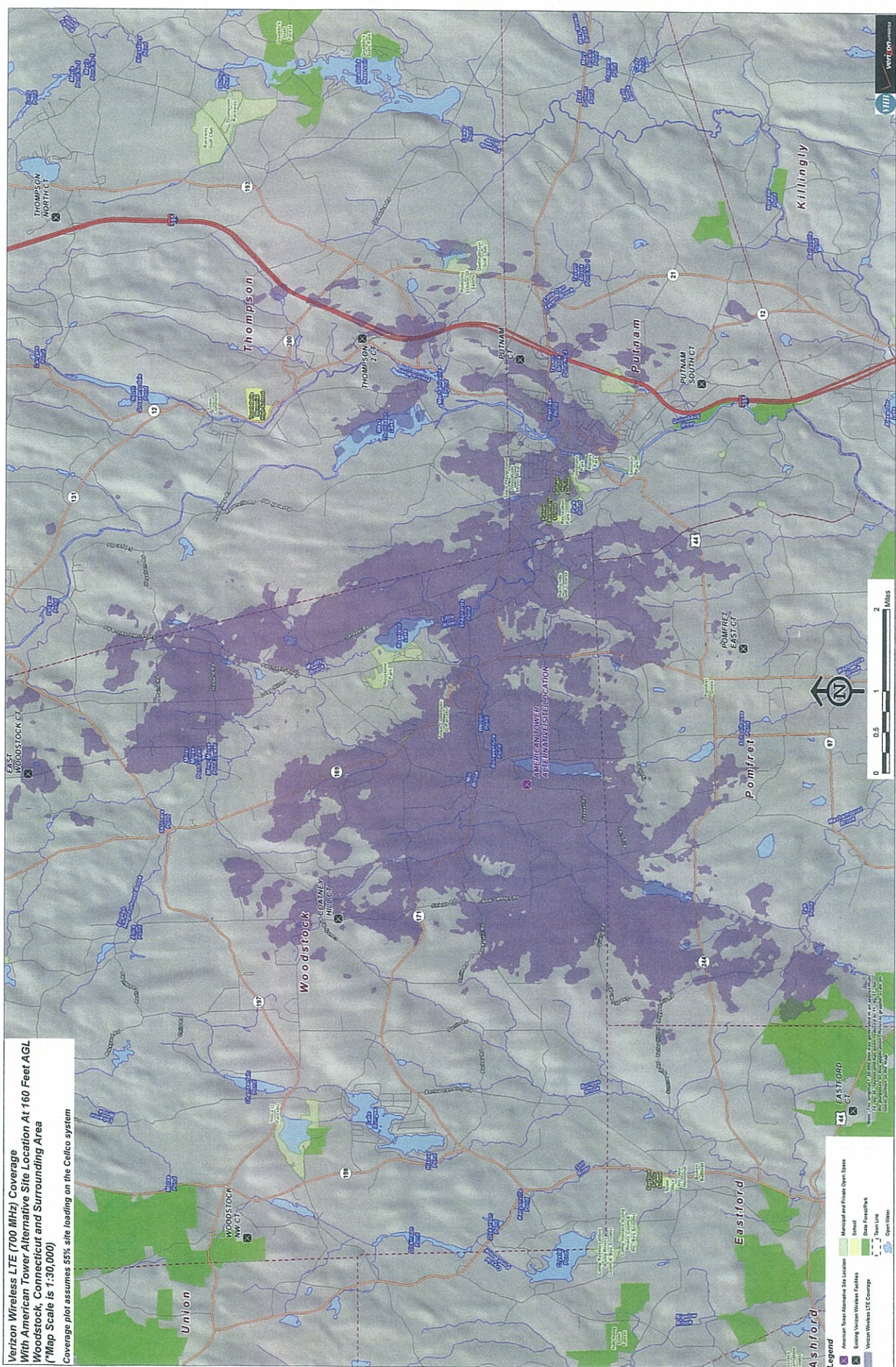
Existing Verizon Wireless Cellular Coverage
 With American Tower Alternative Site Location At 160 Feet AGL
 Woodsrock, Connecticut and Surrounding Area
 (*Map Scale is 1:30,000)
 Coverage plot assumes 55% site loading on the Celco system



- Legend**
- X American Tower Alternative Site Location
 - X Existing Verizon Wireless Facilities
 - X Verizon Wireless Cellular Coverage
 - Municipal and Private Open Space
 - Staff ForestPark
 - Open Fiber
 - Town Line



Verizon Wireless LTE (700 MHz) Coverage
 With American Tower Alternative Site Location At 160 Feet AGL
 Woodstock, Connecticut and Surrounding Area
 (*Map Scale is 1:30,000)
 Coverage plot assumes 55% site loading on the Celco system



Legend

- American Tower Alternative Site Location
- Municipal and Private Open Space
- School
- Existing Verizon Wireless Facilities
- State Forest/Park
- Verizon Wireless LTE Coverage
- Fire Line
- Open Water

0 0.5 1 2 Miles