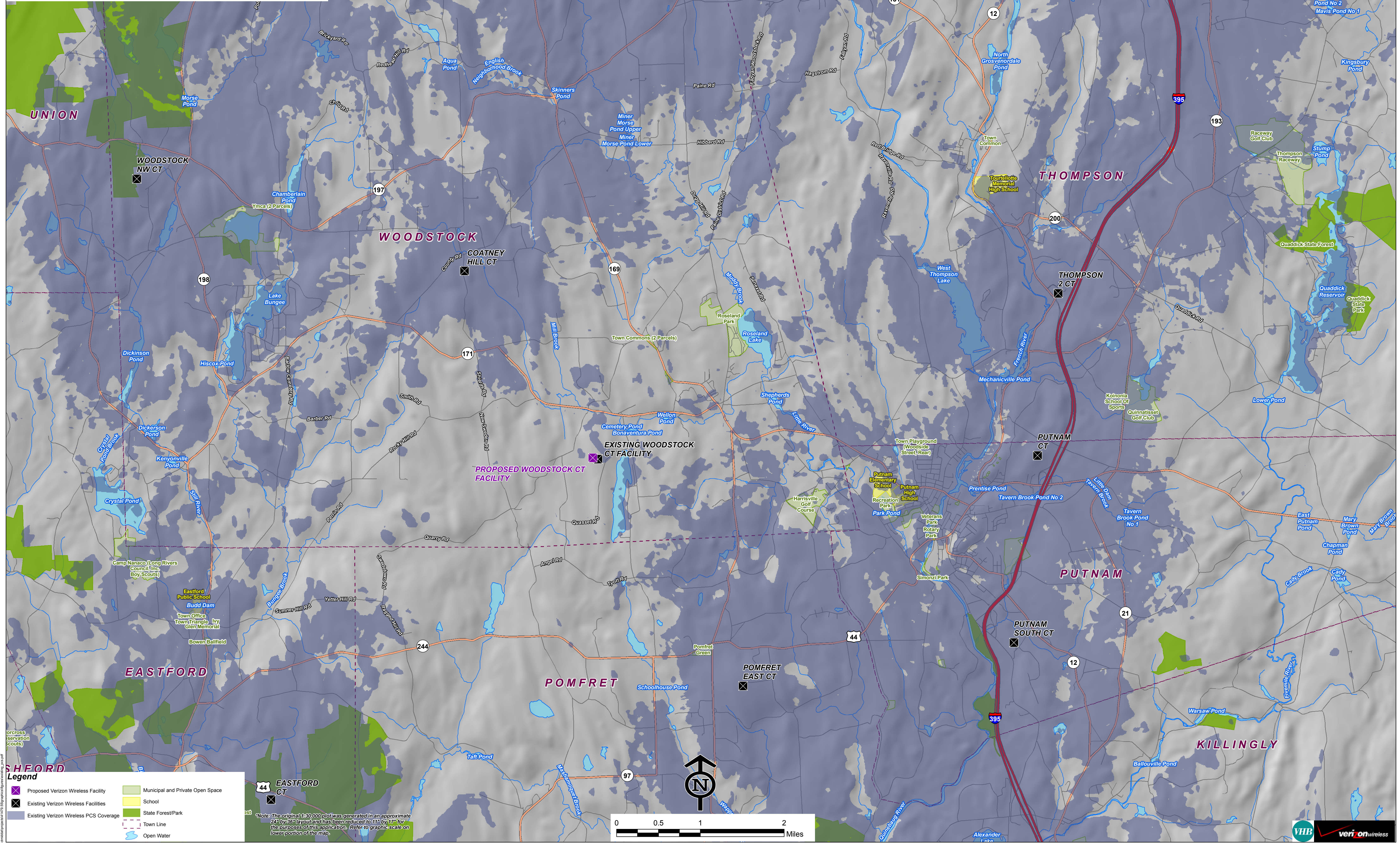


Existing Verizon Wireless PCS Coverage
Woodstock, Connecticut and Surrounding Area
 (*Map Scale is 1:30,000)

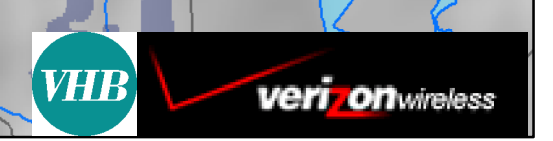
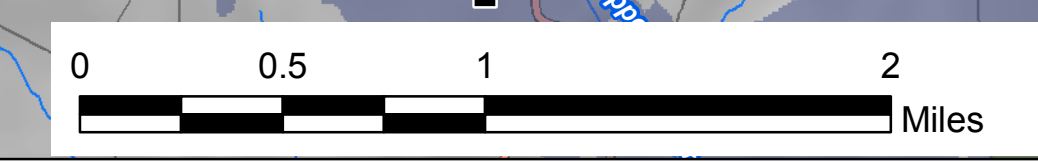
Coverage plot assumes 55% site loading on the Cellco system



Legend

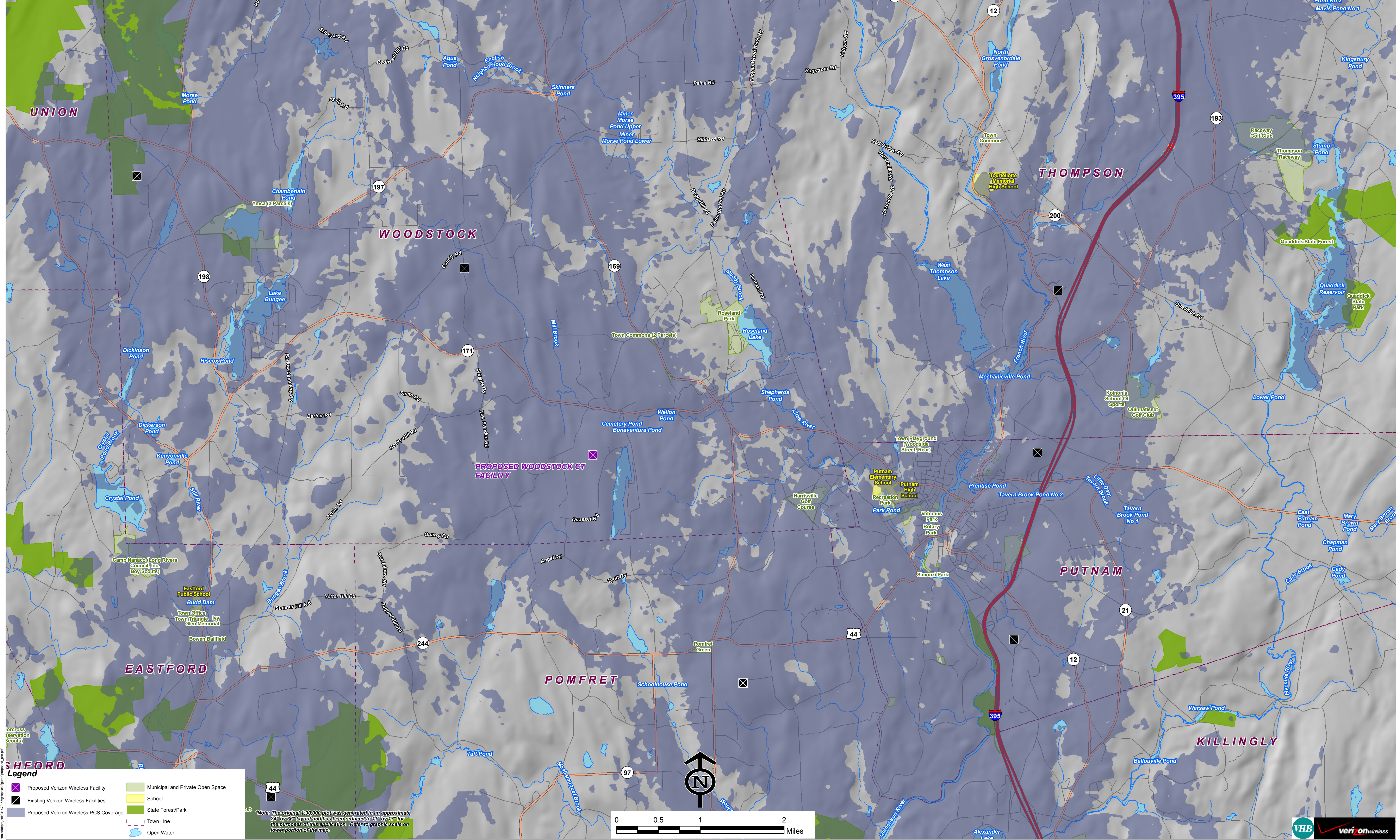
- Proposed Verizon Wireless Facility
- Existing Verizon Wireless Facilities
- Existing Verizon Wireless PCS Coverage
- Municipal and Private Open Space
- School
- State Forest/Park
- Town Line
- Open Water

Note: The original 1:30,000 plot was generated in an approximate 24" by 36" layout and has been reduced to 11" by 17" for the purposes of this application. Refer to graphic scale on lower portion of the map.



**Existing Verizon Wireless PCS Coverage
With Proposed Facility At 147 Feet AGL
Woodstock, Connecticut and Surrounding Area
(*Map Scale is 1:30,000)**

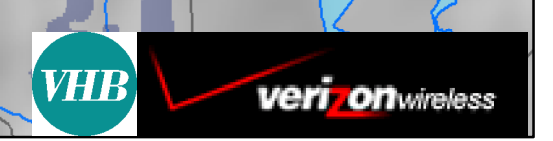
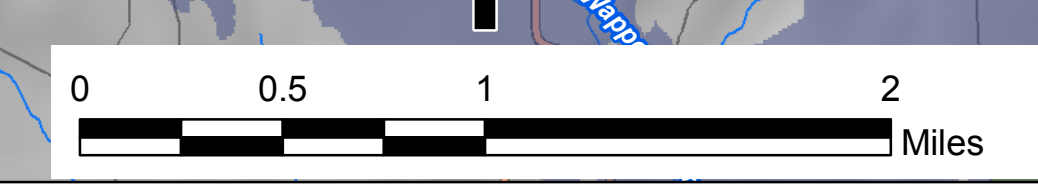
Coverage plot assumes 55% site loading on the Cellco system



Legend

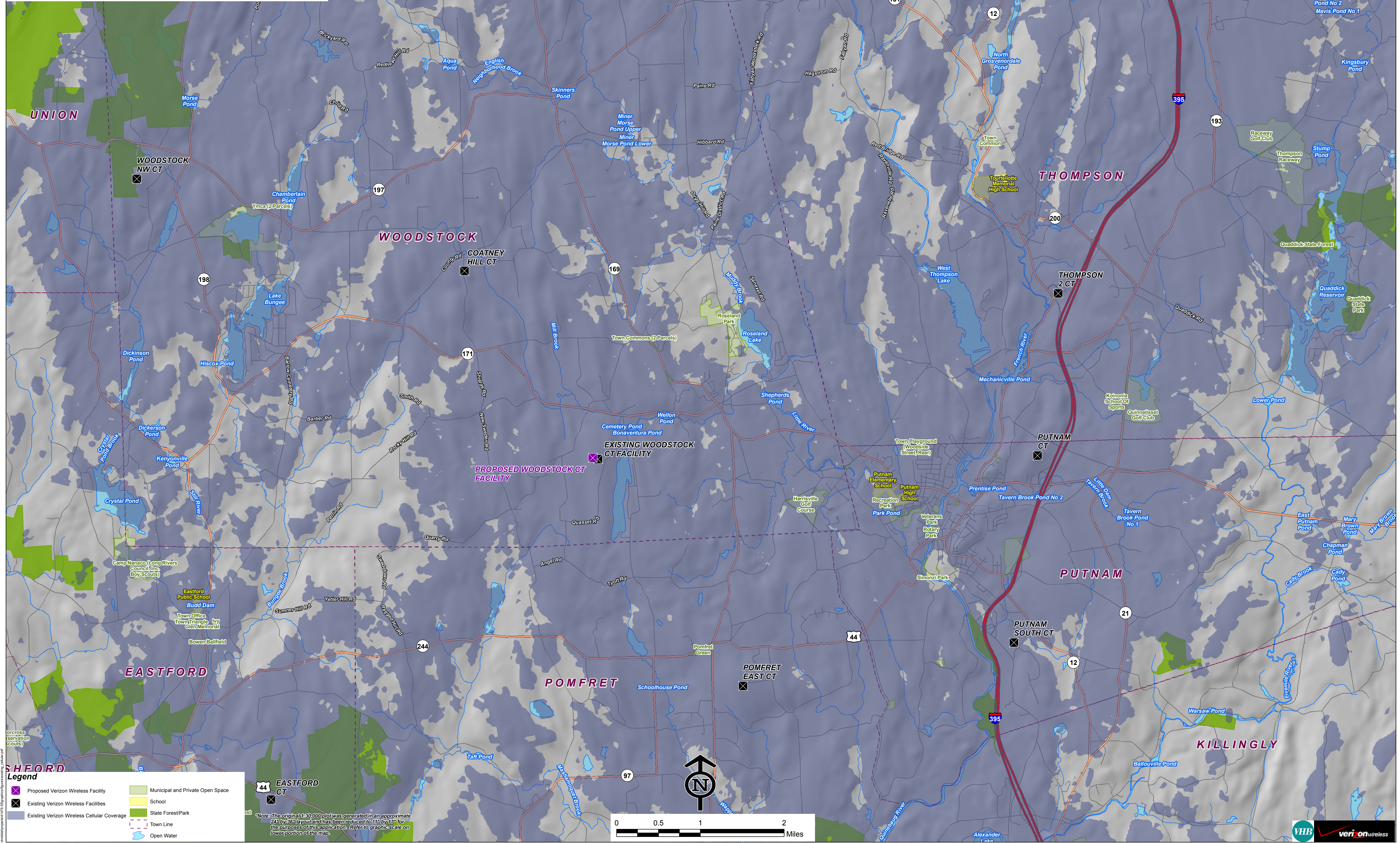
- Proposed Verizon Wireless Facility
- Existing Verizon Wireless Facilities
- Proposed Verizon Wireless PCS Coverage
- Town Line
- Open Water
- Municipal and Private Open Space
- School
- State Forest/Park

*Note: The original 1:30,000 plot was generated in an approximate 24" by 36" layout and has been reduced to 11" by 17" for the purposes of this application. Refer to graphic scale on lower portion of the map.



Existing Verizon Wireless Cellular Coverage
Woodstock, Connecticut and Surrounding Area
 (*Map Scale is 1:30,000)

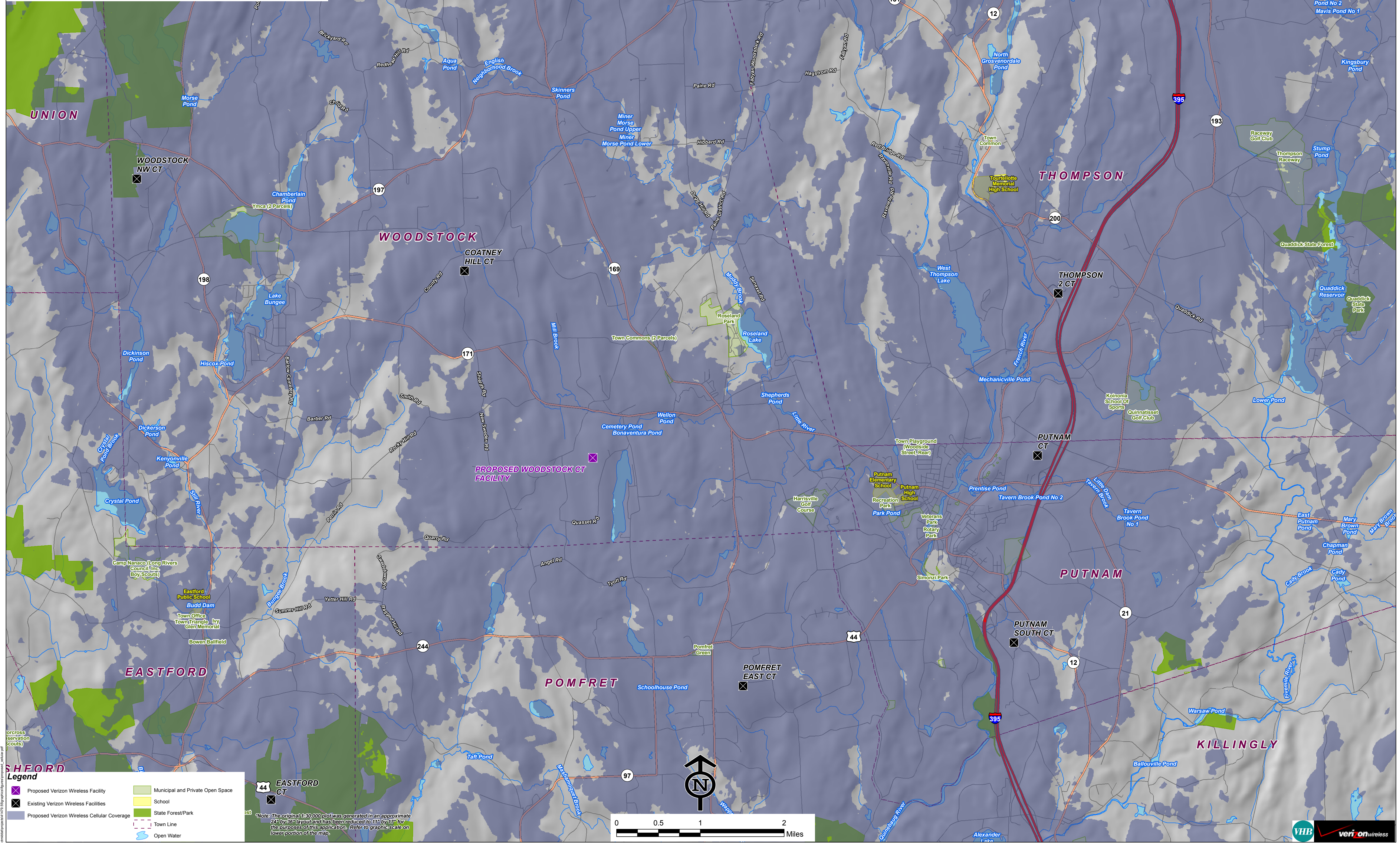
Coverage plot assumes 55% site loading on the Cellco system



*Note: The original 1:30,000 plot was generated in an approximate 24" by 36" layout and has been reduced to 11" by 17" for the purposes of this application. Refer to graphic scale on lower portion of the map.

**Existing Verizon Wireless Cellular Coverage
With Proposed Facility At 147 Feet AGL
Woodstock, Connecticut and Surrounding Area
(*Map Scale is 1:30,000)**

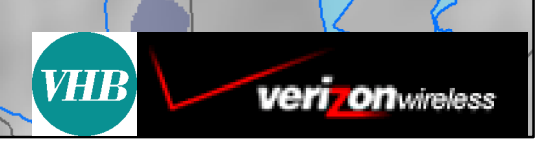
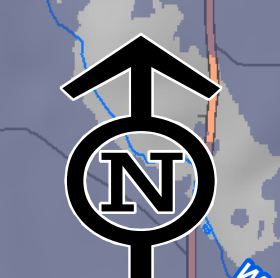
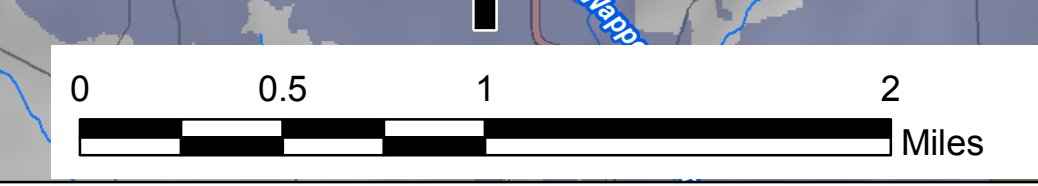
Coverage plot assumes 55% site loading on the Cellco system



Legend

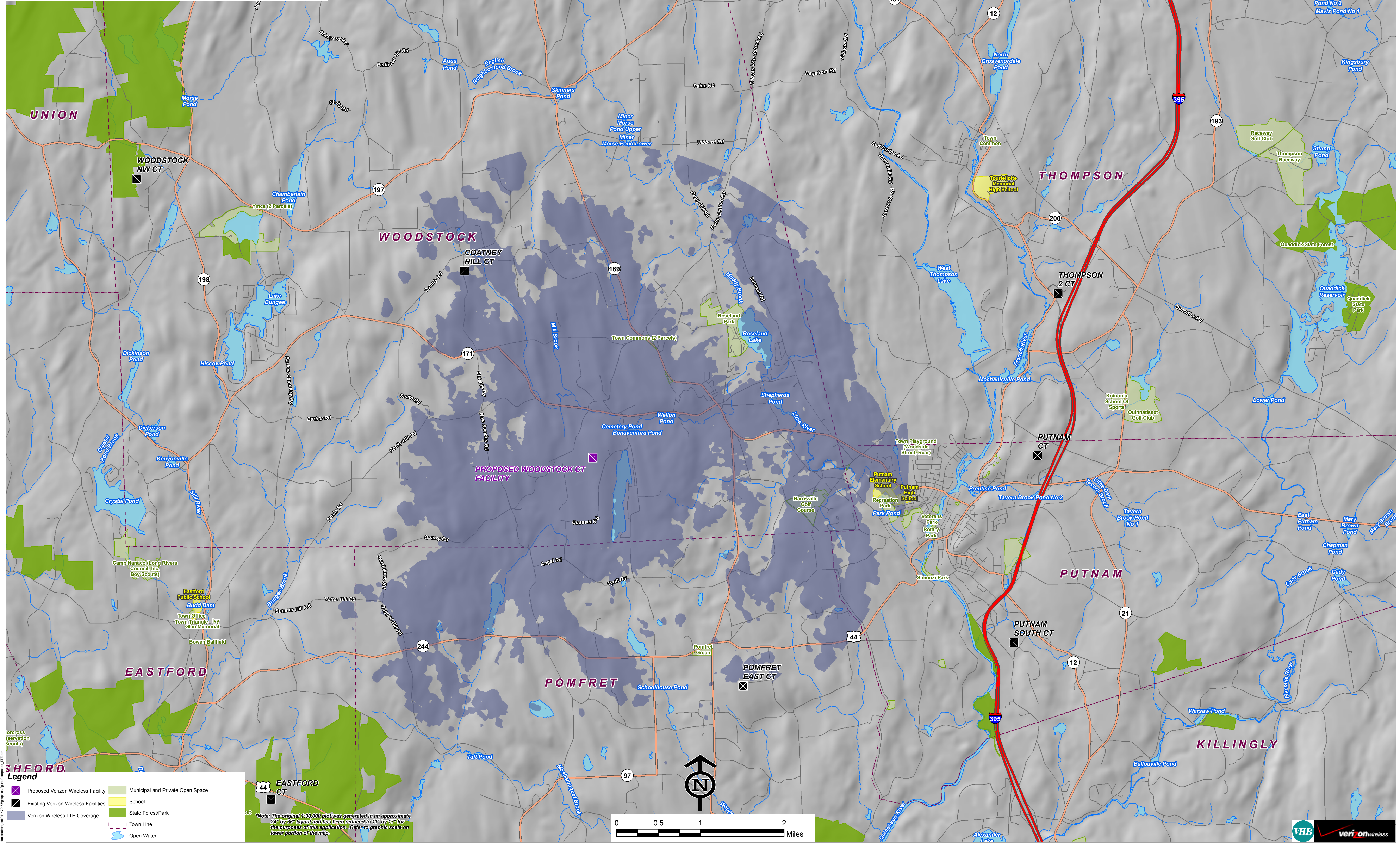
- X Proposed Verizon Wireless Facility
- X Existing Verizon Wireless Facilities
- Municipal and Private Open Space
- School
- State Forest/Park
- Proposed Verizon Wireless Cellular Coverage
- Town Line
- Open Water

*Note: The original 1:30,000 plot was generated in an approximate 24" by 36" layout and has been reduced to 11" by 17" for the purposes of this application. Refer to graphic scale on lower portion of the map.



**Verizon Wireless LTE (700 MHz) Coverage
With Proposed Facility At 147 Feet AGL
Woodstock, Connecticut and Surrounding Area
(*Map Scale is 1:30,000)**

Coverage plot assumes 55% site loading on the Cellco system



Legend

- Proposed Verizon Wireless Facility
- Existing Verizon Wireless Facilities
- Verizon Wireless LTE Coverage
- Municipal and Private Open Space
- School
- State Forest/Park
- Town Line
- Open Water

*Note: The original 1:30,000 plot was generated in an approximate 24" by 36" layout and has been reduced to 11" by 17" for the purposes of this application. Refer to graphic scale on lower portion of the map.

