

| Photographic Documentation



J:\1479_45\graphics\FIGURES\1479_45_Photos.m

VIEW	LOCATION	ORIENTATION	DISTANCE TO SITE	VISIBILITY
7	ROUTE 165 ACROSS FROM LIVING WORD FELLOWSHIP CHURCH	SOUTHEAST	0.71 MILE +/-	NON-VISIBLE

| Photographic Documentation



J:\1479_45\graphics\FIGURES\1479_45_Photos.m

VIEW	LOCATION	ORIENTATION	DISTANCE TO SITE	VISIBILITY
8	ADJACENT TO #742 ROUTE 165	SOUTHWEST	0.58 MILE +/-	NON-VISIBLE

| Photographic Documentation



J:\1479_45\graphics\FIGURES\1479_45_Photos.m

VIEW	LOCATION	ORIENTATION	DISTANCE TO SITE	VISIBILITY
9	ADJACENT TO #173 JAMES ROAD	NORTHEAST	0.43 MILE +/-	NON-VISIBLE

| Photographic Documentation



J:\1479_45\graphics\FIGURES\4179_45_Photos.m

VIEW	LOCATION	ORIENTATION	DISTANCE TO SITE	VISIBILITY
10	BEACH POND	SOUTH	0.95 MILE +/-	NON-VISIBLE

| Photographic Documentation



J:\1479_45\graphics\FIGURES\1479_45_Photos.m

VIEW	LOCATION	ORIENTATION	DISTANCE TO SITE	VISIBILITY
11	BEACH POND	SOUTHWEST	1.20 MILES +/-	NON-VISIBLE

| Photographic Documentation



J:\1479_45\graphics\FIGURES\1479_45_Photos.m

VIEW	LOCATION	ORIENTATION	DISTANCE TO SITE	VISIBILITY
12	BEACH POND	SOUTHWEST	1.50 MILES +/-	NON-VISIBLE

| Photographic Documentation



J:\1479_45\graphics\FIGURES\1479_45_Photos.mxd

VIEW	LOCATION	ORIENTATION	DISTANCE TO SITE	VISIBILITY
13	BEACH POND	SOUTHWEST	1.53 MILES +/-	NON-VISIBLE

Attachment B

Viewshed Map

Viewshed Analysis
Proposed Verizon Wireless
Telecommunications Facility
Voluntown
81 James Road
Voluntown, Connecticut

NOTE:
 - Viewshed analysis conducted using ESRI's Spatial Analyst.
 - Proposed Facility height is 160 feet.
 - Existing tree canopy height estimated at 65 feet.
 - Study Area is comprised of a two-mile radius surrounding the proposed facility and includes 8,042 acres of land.

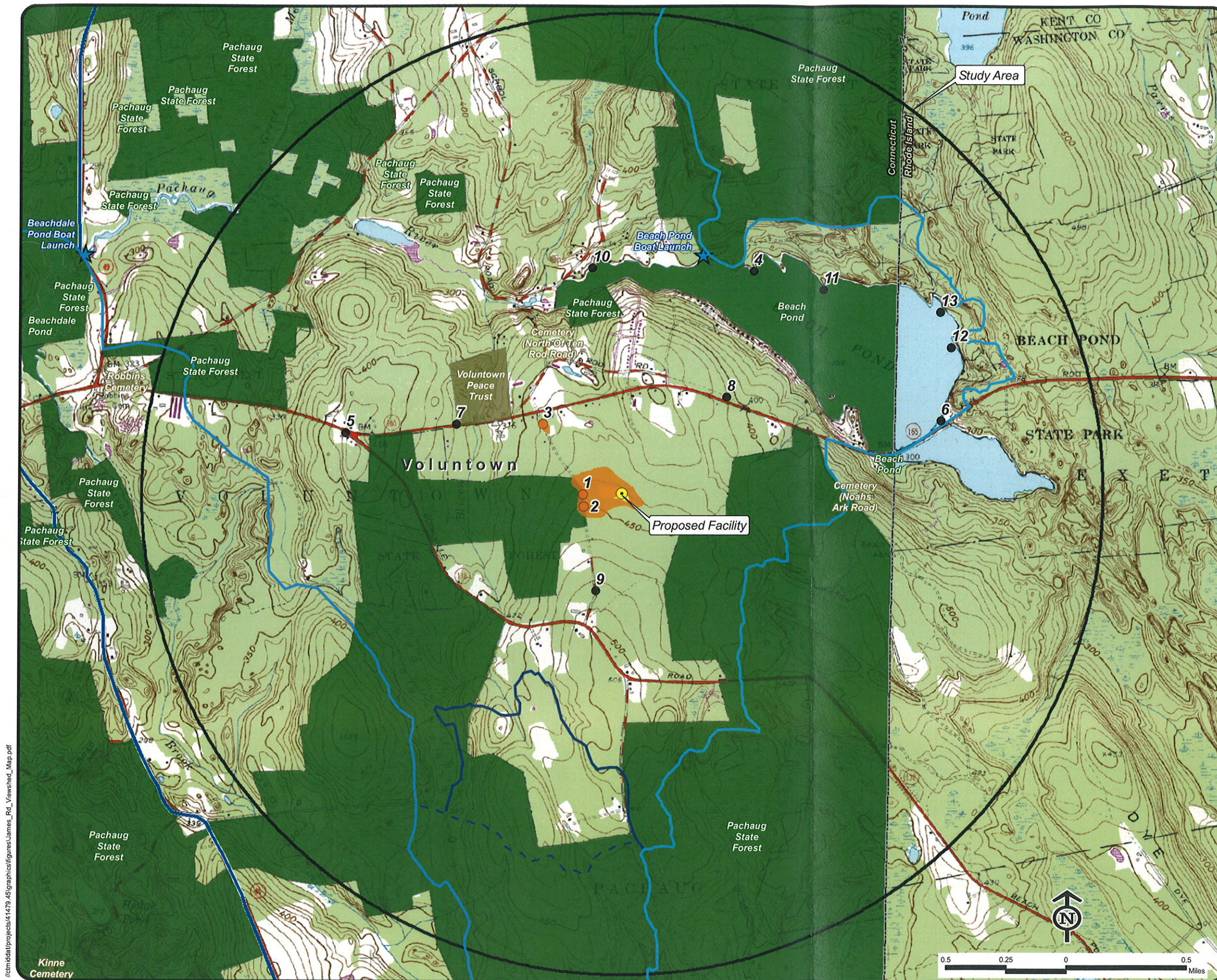
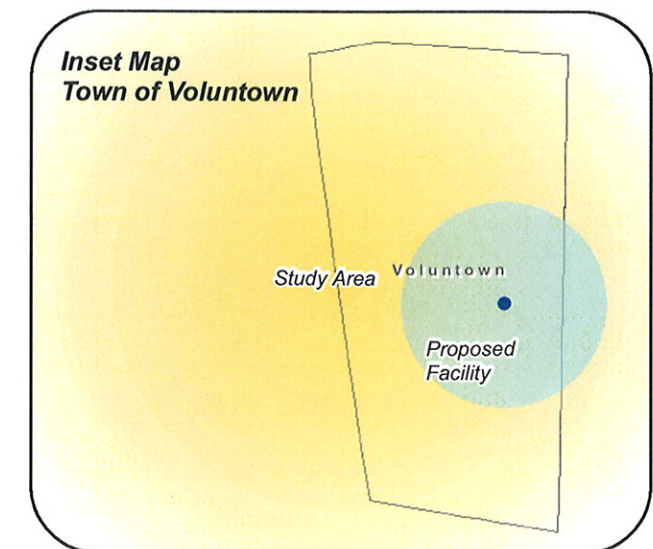
DATA SOURCES:
 - Digital elevation model (DEM) derived from USGS National Elevation Dataset (NED) with a resolution of approximately 30 meters produced by the USGS, 1925-1999
 - Forest areas derived from 2006 digital orthophotos with 1-foot pixel resolution; digitized by VHB, 2009
 - Base map comprised of Voluntown (1975) USGS Quadrangle Map
 - Protected municipal and private open space properties and federal protected properties and data layers provided by CT DEP, 1997
 - Protected CT DEP properties data layer provided by CTDEP, May 2007
 - CT DEP boat launches data layer provided by CT DEP, 1994
 - Scenic Roads layer derived from available State and Local listings.

Map Compiled August, 2010

Legend

- | | |
|--|-------------------------------------|
| Proposed Site Location | CT DEP Protected Properties (2007) |
| Photographs - April 6, 2010 and August 17, 2010 | State Forest |
| Balloon is not visible | State Park |
| Balloon visible through trees | DEP Owned Waterbody |
| Seasonal Visibility (Approximately 26 acres) | State Park Scenic Reserve |
| Year-Round Visibility (Approximately 3.5 acres) | Historic Preserve |
| Protected Municipal and Private Open Space Properties (1997) | Natural Area Preserve |
| Cemetery | Fish Hatchery |
| Preservation | Flood Control |
| Conservation | Other |
| Existing Preserved Open Space | State Park Trail |
| Recreation | Water Access |
| General Recreation | Wildlife Area |
| School | Wildlife Sanctuary |
| Uncategorized | Federal Protected Properties (1997) |
| | State Line |
| | CT DEP Boat Launches (1994) |
| | Scenic Road (State and Local) |
| | Pachaug Trail (CT Blue Blaze) |
| | Nehantic Trail (CT Blue Blaze) |
| | Narragansett Trail (CT Blue Blaze) |
| | Laurel Loop Trail |
| | Nehantic Pachaug Crossover Trail |

Inset Map
Town of Voluntown



/c:\msd\projects\41479_45\graphics\figures\james_road_viewshed_map.pdf