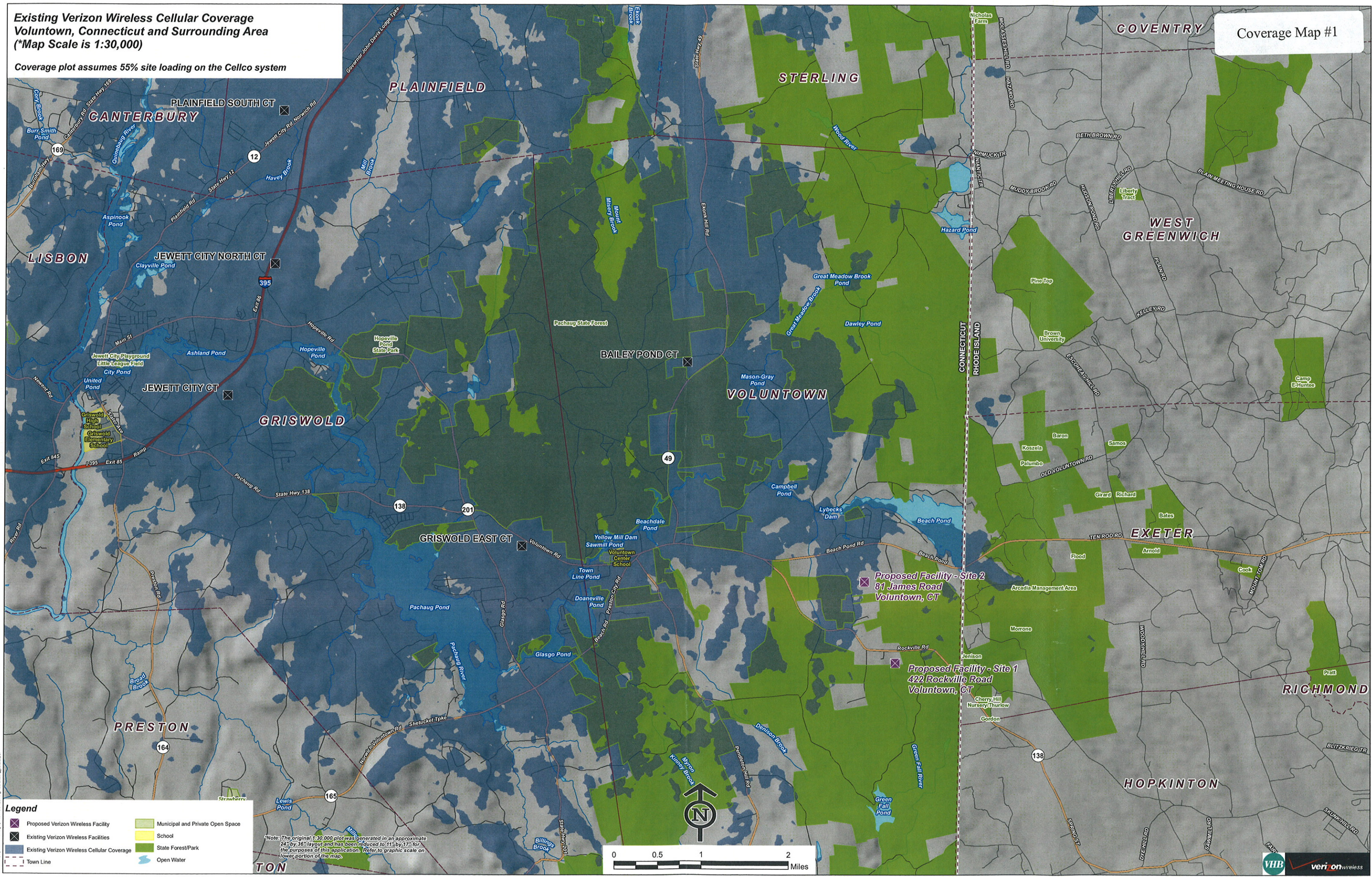


**Existing Verizon Wireless Cellular Coverage  
Voluntown, Connecticut and Surrounding Area  
(\*Map Scale is 1:30,000)**

Coverage plot assumes 55% site loading on the Cellco system

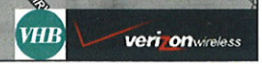
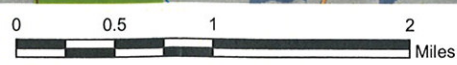
Coverage Map #1



**Legend**

- X Proposed Verizon Wireless Facility
- X Existing Verizon Wireless Facilities
- Existing Verizon Wireless Cellular Coverage
- Town Line
- Municipal and Private Open Space
- School
- State Forest/Park
- Open Water

\*Note: The original 1:30,000 plot was generated in an approximate 24" by 36" layout and has been reduced to 11" by 17" for the purposes of this application. Refer to graphic scale on lower portion of the map.

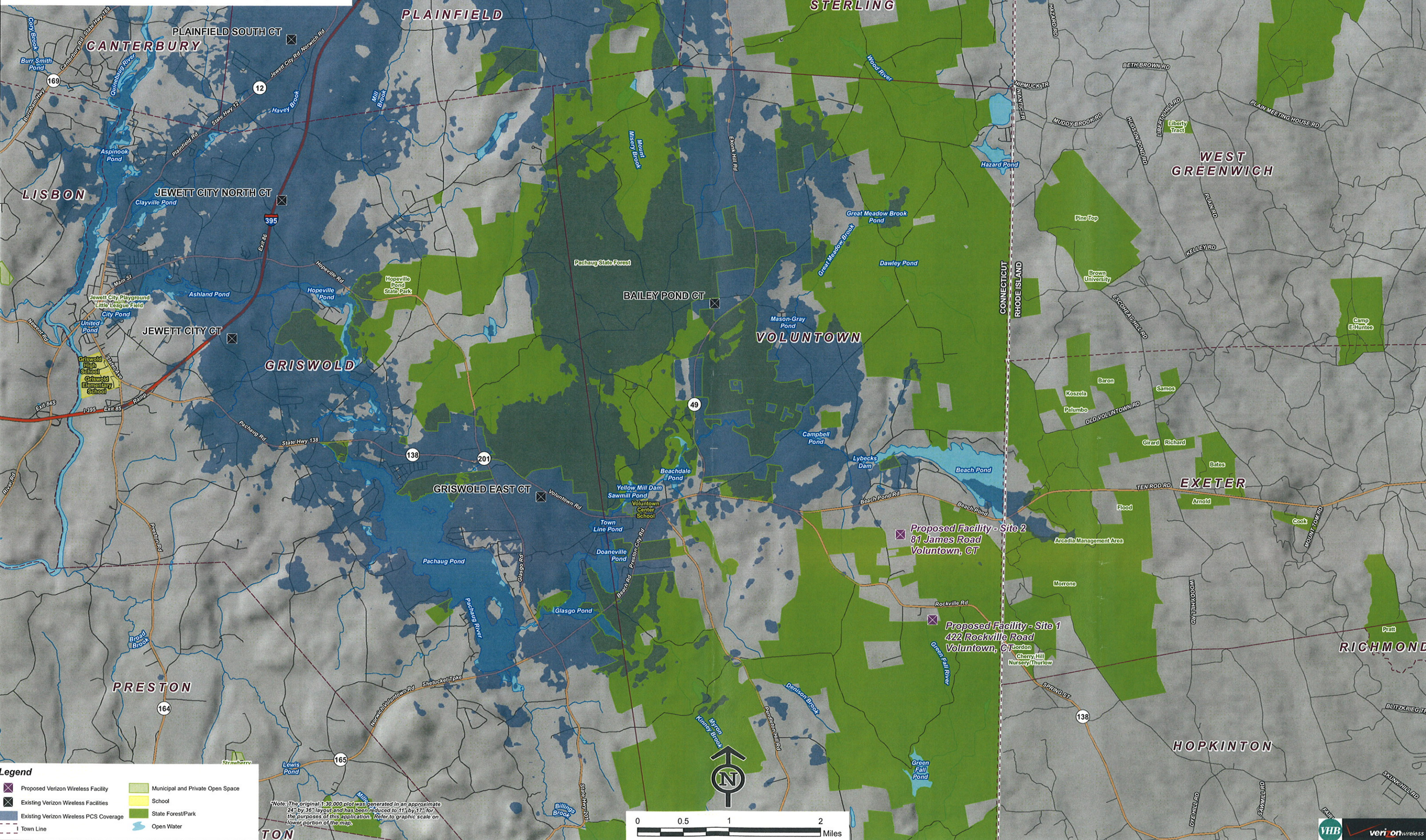




**Existing Verizon Wireless PCS Coverage  
Voluntown, Connecticut and Surrounding Area  
(\*Map Scale is 1:30,000)**

Coverage Map #2

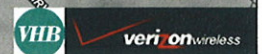
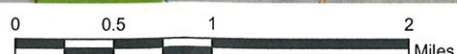
Coverage plot assumes 55% site loading on the Cellco system



\*Note: The original 1:30,000 plot was generated in an approximate 24" by 36" layout and has been reduced to 11" by 17" for the purposes of this application. Refer to graphic scale on lower portion of the map.

**Legend**

- ✖ Proposed Verizon Wireless Facility
- ✖ Existing Verizon Wireless Facilities
- Existing Verizon Wireless PCS Coverage
- Municipal and Private Open Space
- School
- State Forest/Park
- Open Water
- Town Line

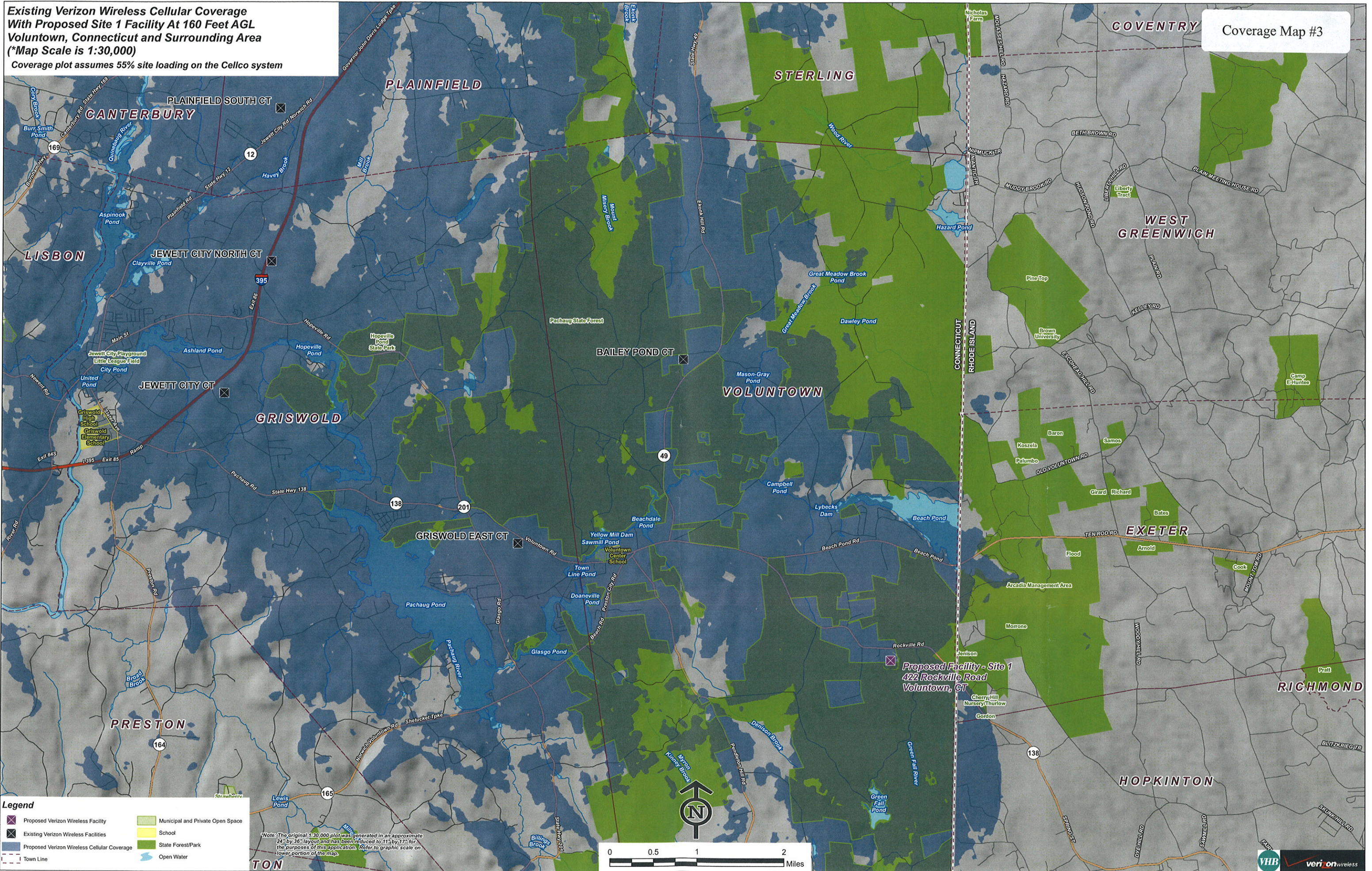




**Existing Verizon Wireless Cellular Coverage  
With Proposed Site 1 Facility At 160 Feet AGL  
Voluntown, Connecticut and Surrounding Area  
(\*Map Scale is 1:30,000)**

Coverage plot assumes 55% site loading on the Cellco system

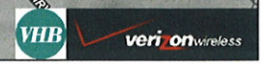
Coverage Map #3



**Legend**

- Proposed Verizon Wireless Facility
- Existing Verizon Wireless Facilities
- Proposed Verizon Wireless Cellular Coverage
- Town Line
- Municipal and Private Open Space
- School
- State Forest/Park
- Open Water

\*Note: The original 1:30,000 plot was generated in an approximate 24" by 36" layout and has been reduced to 11" by 17" for the purposes of this application. Refer to graphic scale on lower portion of the map.

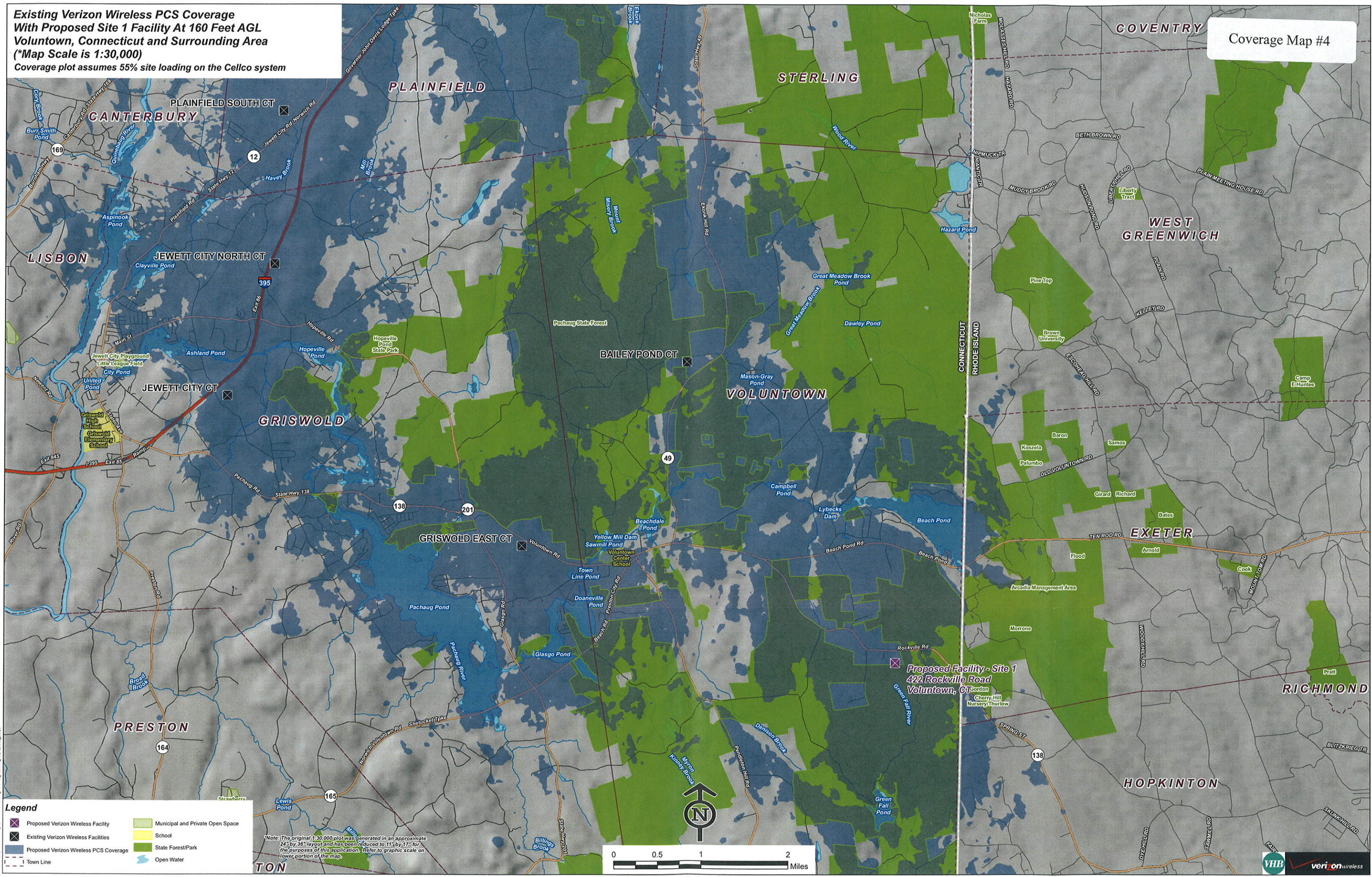




**Existing Verizon Wireless PCS Coverage  
With Proposed Site 1 Facility At 160 Feet AGL  
Voluntown, Connecticut and Surrounding Area  
(\*Map Scale is 1:30,000)**

Coverage plot assumes 55% site loading on the Cellco system

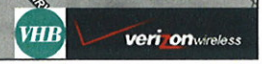
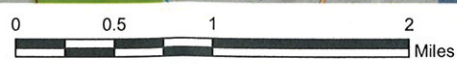
Coverage Map #4



**Legend**

- Proposed Verizon Wireless Facility
- Existing Verizon Wireless Facilities
- Proposed Verizon Wireless PCS Coverage
- Town Line
- Municipal and Private Open Space
- School
- State Forest/Park
- Open Water

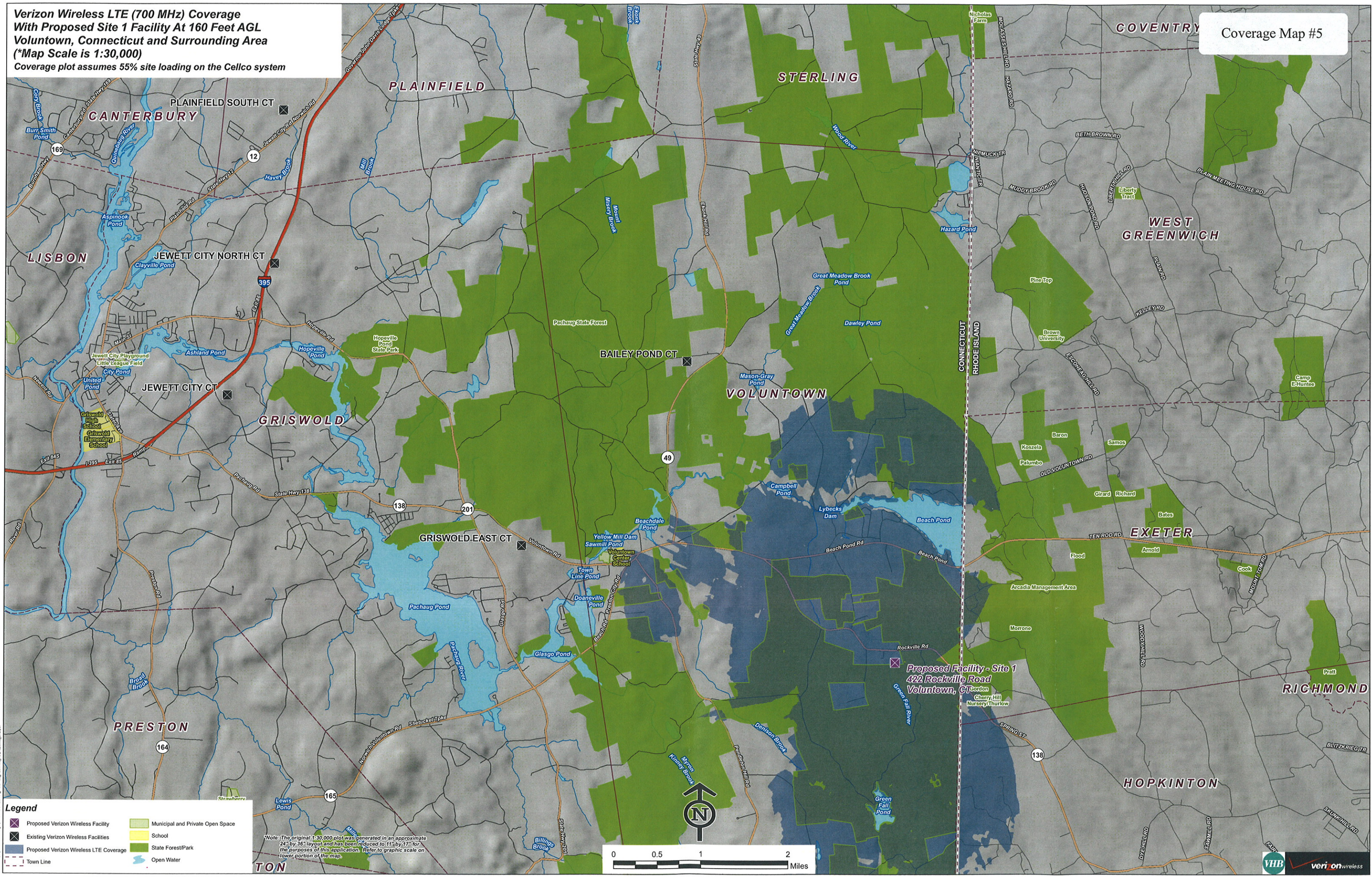
\*Note: The original 1:30,000 plot was generated in an approximate 24" by 36" layout and has been reduced to 11" by 17" for the purposes of this application. Refer to graphic scale on lower portion of the map.





**Verizon Wireless LTE (700 MHz) Coverage**  
**With Proposed Site 1 Facility At 160 Feet AGL**  
**Voluntown, Connecticut and Surrounding Area**  
 (\*Map Scale is 1:30,000)  
 Coverage plot assumes 55% site loading on the Cellco system

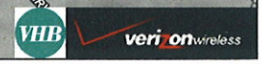
Coverage Map #5



**Legend**

- Proposed Verizon Wireless Facility
- Existing Verizon Wireless Facilities
- Proposed Verizon Wireless LTE Coverage
- Town Line
- Municipal and Private Open Space
- School
- State Forest/Park
- Open Water

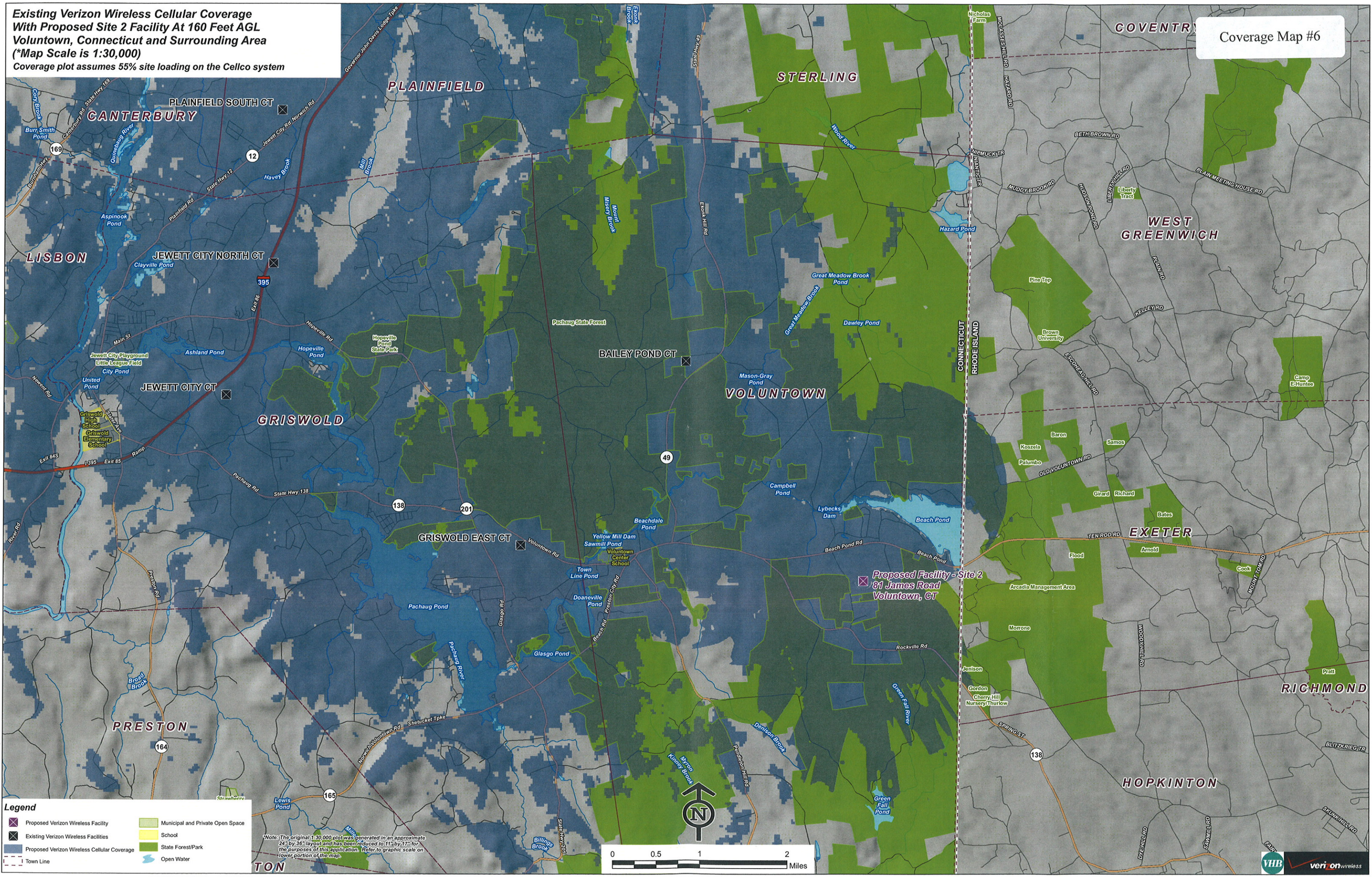
\*Note: The original 1:30,000 plot was generated in an approximate 24" by 36" layout and has been reduced to 11" by 17" for the purposes of this application. Refer to graphic scale on lower portion of the map.





Existing Verizon Wireless Cellular Coverage  
 With Proposed Site 2 Facility At 160 Feet AGL  
 Voluntown, Connecticut and Surrounding Area  
 (\*Map Scale is 1:30,000)  
 Coverage plot assumes 55% site loading on the Cellco system

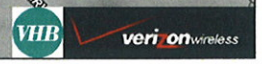
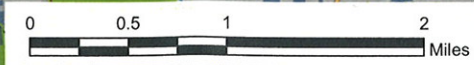
Coverage Map #6



**Legend**

- X Proposed Verizon Wireless Facility
- X Existing Verizon Wireless Facilities
- Proposed Verizon Wireless Cellular Coverage
- Town Line
- Municipal and Private Open Space
- School
- State Forest/Park
- Open Water

\*Note: The original 1:30,000 plot was generated in an approximate 24" by 36" layout and has been reduced to 11" by 17" for the purposes of this application. Refer to graphic scale on lower portion of the map.



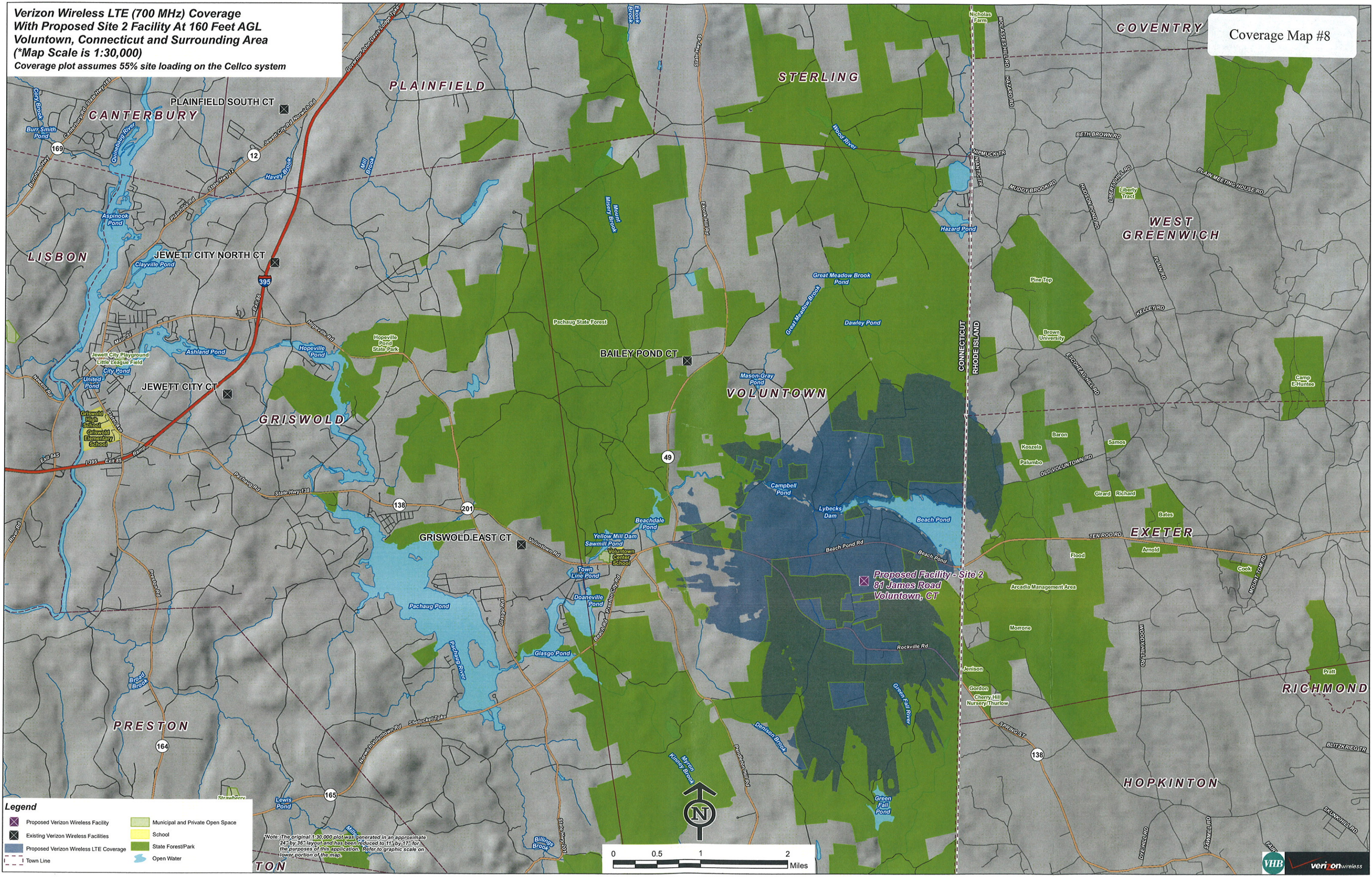






**Verizon Wireless LTE (700 MHz) Coverage**  
**With Proposed Site 2 Facility At 160 Feet AGL**  
**Voluntown, Connecticut and Surrounding Area**  
 (\*Map Scale is 1:30,000)  
 Coverage plot assumes 55% site loading on the Cellco system

Coverage Map #8



**Legend**

Proposed Verizon Wireless Facility	Municipal and Private Open Space
Existing Verizon Wireless Facilities	School
Proposed Verizon Wireless LTE Coverage	State Forest/Park
Town Line	Open Water

*\*Note: The original 1:30,000 plot was generated in an approximate 24" by 36" layout and has been reduced to 11" by 17" for the purposes of this application. Refer to graphic scale on lower portion of the map.*

