

STATE OF CONNECTICUT  
CONNECTICUT SITING COUNCIL

IN RE: :  
: :  
APPLICATION OF CELLCO PARTNERSHIP : DOCKET NO. 405  
D/B/A VERIZON WIRELESS FOR A :  
CERTIFICATE OF ENVIRONMENTAL :  
COMPATIBILITY AND PUBLIC NEED FOR :  
THE CONSTRUCTION, MAINTENANCE AND :  
OPERATION OF A WIRELESS :  
TELECOMMUNICATIONS FACILITY IN THE :  
TOWN OF VOLUNTOWN, CONNECTICUT : NOVEMBER 17, 2010

RESPONSES OF CELLCO PARTNERSHIP d/b/a VERIZON WIRELESS TO  
CONNECTICUT SITING COUNCIL PRE-HEARING INTERROGATORIES

On October 27, 2010, the Connecticut Siting Council (“Council”) issued Pre-Hearing Interrogatories to Applicant, Cellco Partnership d/b/a Verizon Wireless (“Cellco”), relating to the above-captioned docket. Below are Cellco’s responses.

Question No. 1

Did Cellco receive return receipts for all adjacent landowners listed in Application Attachment 5? If not, describe any additional effort to serve notice.

Response

Yes.

Question No. 2

Provide notice by first class mail to the properties at 95 James Road and 103 James Road.

Response

On October 28, 2010, notice of Cellco’s filing was sent to the owners of property at 95

James Road and 103 James Road as requested. Copies of those letters are included behind Tab 1 of these responses.

Question No. 3

Would blasting be required for the construction of the proposed sites? Provide estimates of cut and fill.

Response

Cellco does not anticipate the need for blasting to construct either the Site 1 or Site 2 facilities. A geotechnical survey will be completed if one of the two cell sites is approved and submitted to the Council as a part of the project's D&M Plan. Cellco estimates that site construction will require a total cut of approximately 317 cubic yards of material and a total fill of approximately 30 cubic yards of material at the Site 1 location; and a total cut of approximately 220 cubic yards of material and a total fill of approximately 24 cubic yards of material at the Site 2 location.

Question No. 4

What is Cellco's minimum signal level threshold for in-building and in-vehicle use?

Response

Cellco's minimum coverage thresholds are -85 dBm for reliable in-vehicle service and -75 dBm for reliable in-building service.

Question No. 5

What is the current signal strength in the proposed service area?

Response

Existing signal strength in this area ranges from -86 dBm to - 108 dBm.

Question No. 6

Provide a coverage plot, using the scale and thresholds in Application Attachment 7, that depict cellular and PCS coverage from existing/approved Cellco sites and both proposed sites at a height of 140 feet.

Response

The coverage plots requested are attached behind Tab 2 of these responses.

Question No. 7

Provide the methodology and input parameters used to obtain the power density figure presented on page 18 of the application.

Response

The power density figures presented in the application were developed using the formula established by the FCC. Input parameters used are set forth in the table included behind Tab 3 of these responses.

Question No. 8

Is there a State of Connecticut public campground in Pachaug State Forest, adjacent to the Green Falls Reservoir? Would the proposed sites provide adequate coverage to the Green Falls Reservoir area?

Response

Based on information obtained from the Connecticut Department of Environmental Protection, Bureau of Outdoor Recreation, State Parks Division, the area near Green Fall Pond is used for public camping, boating and swimming. (See Attachment 4). According to the coverage maps included behind Tab 7 of the application, Cellco could provide reliable service to the Green Fall Pond area within the Pachaug State Forest at cellular, PCS and LTE frequencies



280 Trumbull Street  
Hartford, CT 06103-3597  
Main (860) 275-8200  
Fax (860) 275-8299  
kbaldwin@rc.com  
Direct (860) 275-8345

October 28, 2010

Patricia A. Farrey  
103 James Road  
Voluntown, Ct 06384

**Re: Docket No. 405 – Application Of Cellco Partnership d/b/a Verizon  
Wireless For The Construction Of A Telecommunications Tower Facility  
At 81 James Road, Voluntown, Connecticut**

Dear Ms. Farrey:

This firm represents Cellco Partnership d/b/a Verizon Wireless (“Cellco”) in its application to establish a telecommunications facility at 81 James Road, Voluntown, Connecticut. The telecommunications facility will consist of a 150-foot monopole tower and certain ground-mounted equipment, all located within a 100’ x 100’ leased area in the central portion of the parcel at 81 James Road. A copy of the project plans included in Cellco’s Connecticut Siting Council (“Council”) application are attached for your review.

The Council will hold a public hearing on this application on November 30, 2010 at 3:00 p.m. and 7:00 p.m. at the Voluntown Fire Department, Meeting Hall, 205 Preston City Road, Voluntown, Connecticut. Copies of the application are available for review at Voluntown Town Hall or on line at [www.ct.gov/csc](http://www.ct.gov/csc). Please reference Siting Council Docket No. 405. If you have any specific questions you can contact the Council directly at 860-827-2935 or me. My telephone number is listed above.



Law Offices  
BOSTON  
HARTFORD  
NEW LONDON  
TAMFORD  
WHITE PLAINS  
NEW YORK CITY  
FLORIDA  
[www.rc.com](http://www.rc.com)

Sincerely,

A handwritten signature in black ink, appearing to read 'Kenneth C. Baldwin'.

Kenneth C. Baldwin

KCB/kmd  
Enclosures  
Copy to:

Linda Roberts, Executive Director, Connecticut Siting Council

280 Trumbull Street  
Hartford, CT 06103-3597  
Main (860) 275-8200  
Fax (860) 275-8299  
kbaldwin@rc.com  
Direct (860) 275-8345

October 28, 2010

Elena Varshauskaya and Boris Raudel  
95 James Road  
Voluntown, CT 06384

Re: **Docket No. 405 – Application Of Cellco Partnership d/b/a Verizon  
Wireless For The Construction Of A Telecommunications Tower Facility  
At 81 James Road, Voluntown, Connecticut**

Dear Ms. Varshauskaya and Mr. Raudel:

This firm represents Cellco Partnership d/b/a Verizon Wireless (“Cellco”) in its application to establish a telecommunications facility at 81 James Road, Voluntown, Connecticut. The telecommunications facility will consist of a 150-foot monopole tower and certain ground-mounted equipment, all located within a 100’ x 100’ leased area in the central portion of the parcel at 81 James Road. A copy of the project plans included in Cellco’s Connecticut Siting Council (“Council”) application are attached for your review.

The Council will hold a public hearing on this application on November 30, 2010 at 3:00 p.m. and 7:00 p.m. at the Voluntown Fire Department, Meeting Hall, 205 Preston City Road, Voluntown, Connecticut. Copies of the application are available for review at Voluntown Town Hall or on line at [www.ct.gov/csc](http://www.ct.gov/csc). Please reference Siting Council Docket No. 405. If you have any specific questions you can contact the Council directly at 860-827-2935 or me. My telephone number is listed above.



Law Offices

BOSTON

HARTFORD

NEW LONDON

TAMFORD

WHITE PLAINS

NEW YORK CITY

PARASOTA

[www.rc.com](http://www.rc.com)

Sincerely,

A handwritten signature in black ink, appearing to read 'Kenneth C. Baldwin', written over a horizontal line.

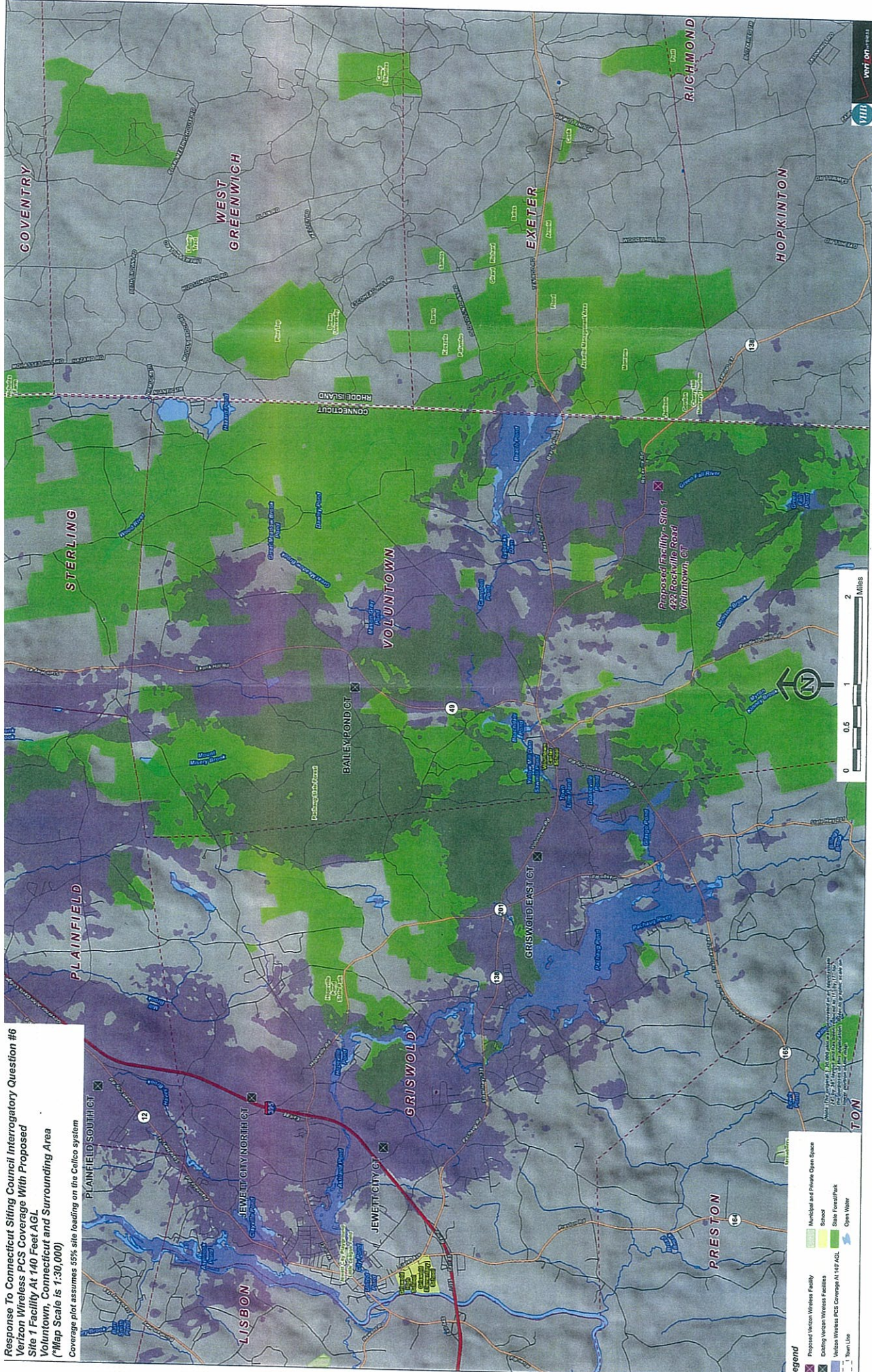
Kenneth C. Baldwin

KCB/kmd  
Enclosures  
Copy to:

Linda Roberts, Executive Director, Connecticut Siting Council.



Response To Connecticut Siting Council Interrogatory Question #6  
 Verizon Wireless PCS Coverage With Proposed  
 Site 1 Facility At 140 Feet AGL  
 Voluntown, Connecticut and Surrounding Area  
 (\*Map Scale is 1:30,000)  
 Coverage plot assumes 55% site loading on the Celco system

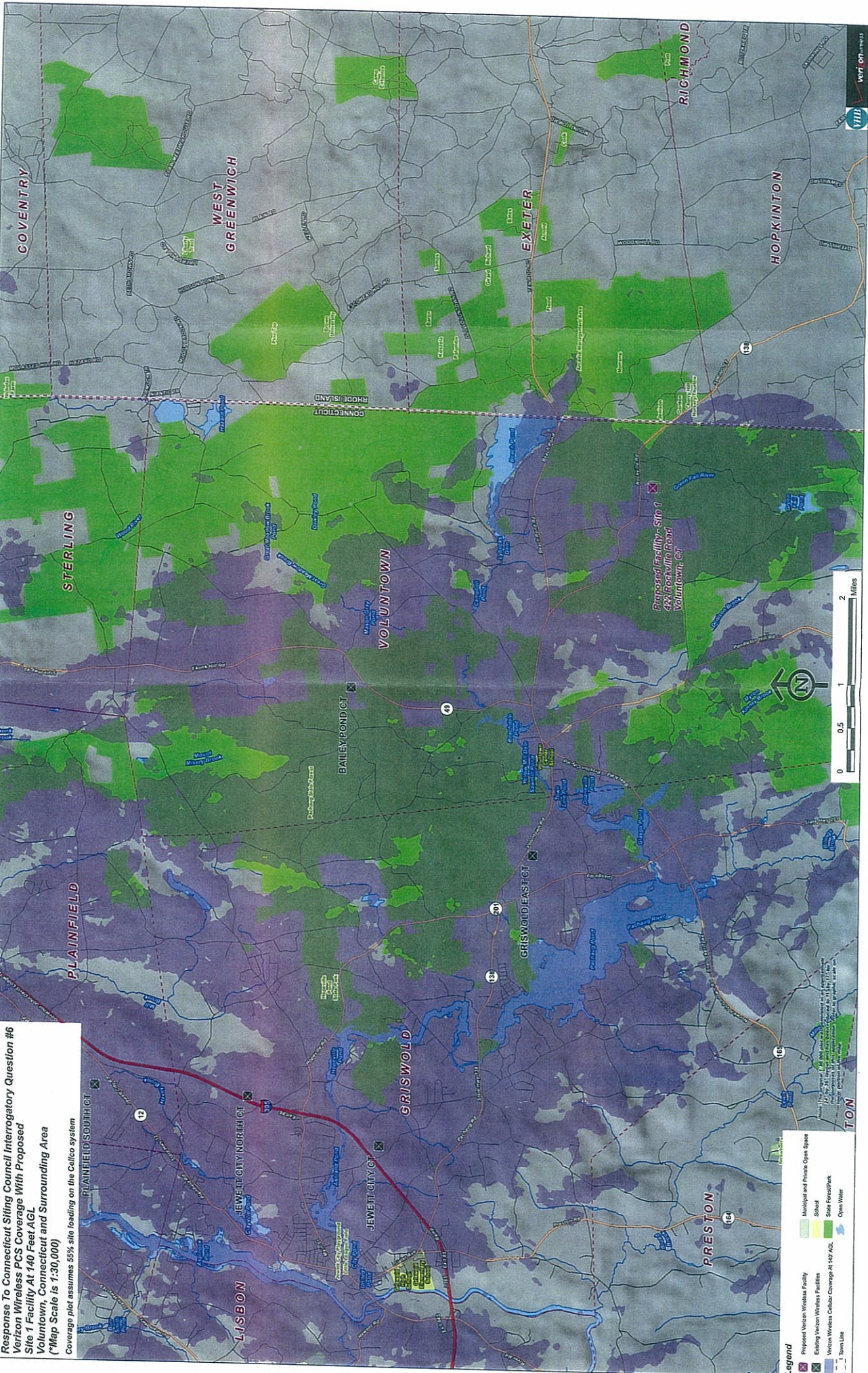


- Legend**
- Proposed Wireless Facility
  - Existing Wireless Facilities
  - Verizon Wireless PCS Coverage At 140' AGL
  - Thru Line
  - Municipal and Private Open Space
  - School
  - State Forest/Park
  - Open Water





Response To Connecticut Siting Council Interrogatory Question #6  
 Verizon Wireless PCS Coverage With Proposed  
 Site 1 Facility At 140 Feet AGL  
 Voluntown, Connecticut and Surrounding Area  
 (\*Map Scale is 1:30,000)  
 Coverage plot assumes 55% site loading on the Celco system



**Legend**

- Municipal and Private Open Space
- Proposed Verizon Wireless Facility
- Existing Verizon Wireless Facilities
- Verizon Wireless Cellular Coverage At 140' AGL
- State Forest/Park
- Open Water
- Town Line

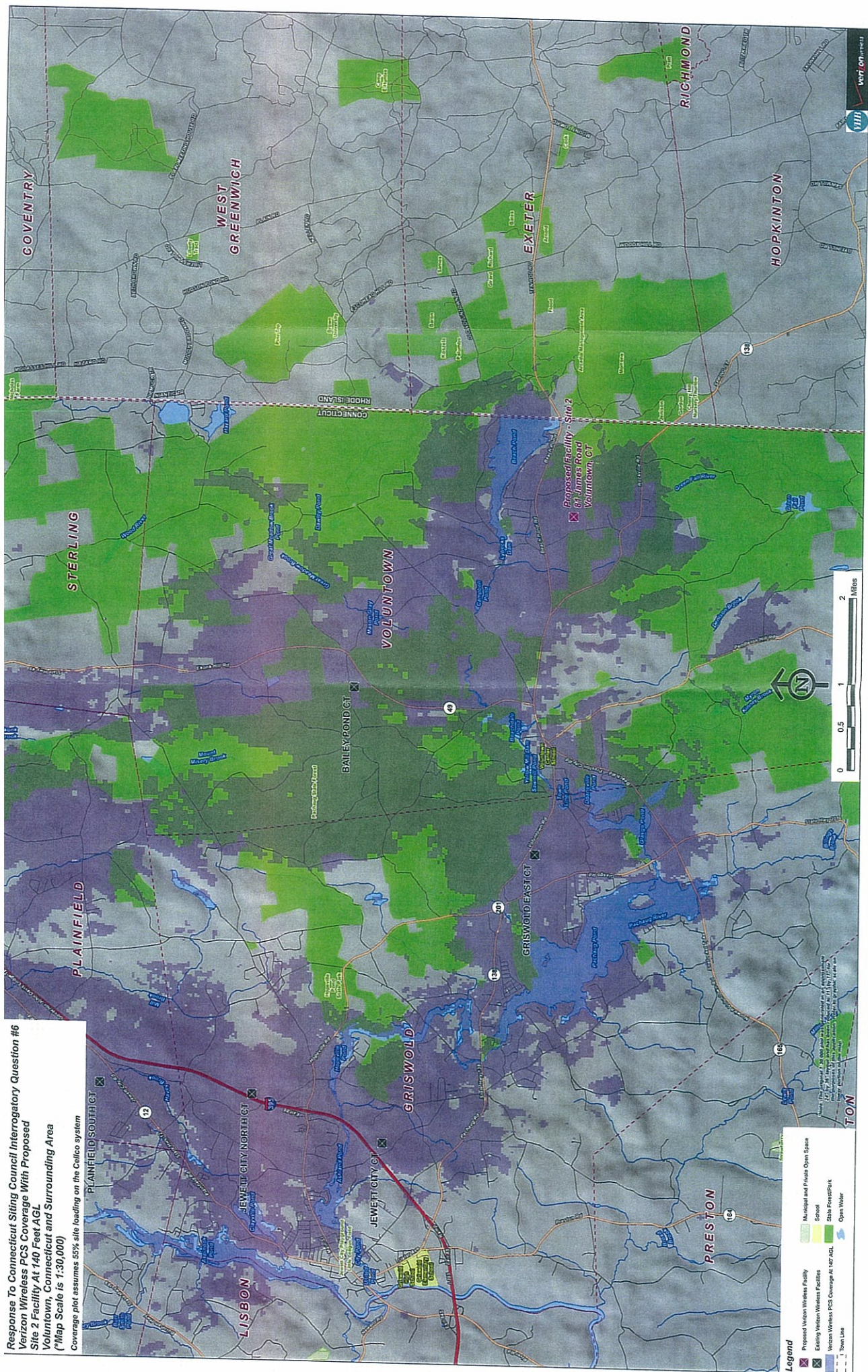
0 0.5 1 2 Miles



VIII



Response To Connecticut Siting Council Interrogatory Question #6  
 Verizon Wireless PCS Coverage With Proposed  
 Site 2 Facility At 140 Feet AGL  
 Voluntown, Connecticut and Surrounding Area  
 (\*Map Scale is 1:30,000)  
 Coverage plot assumes 55% site loading on the Celco system



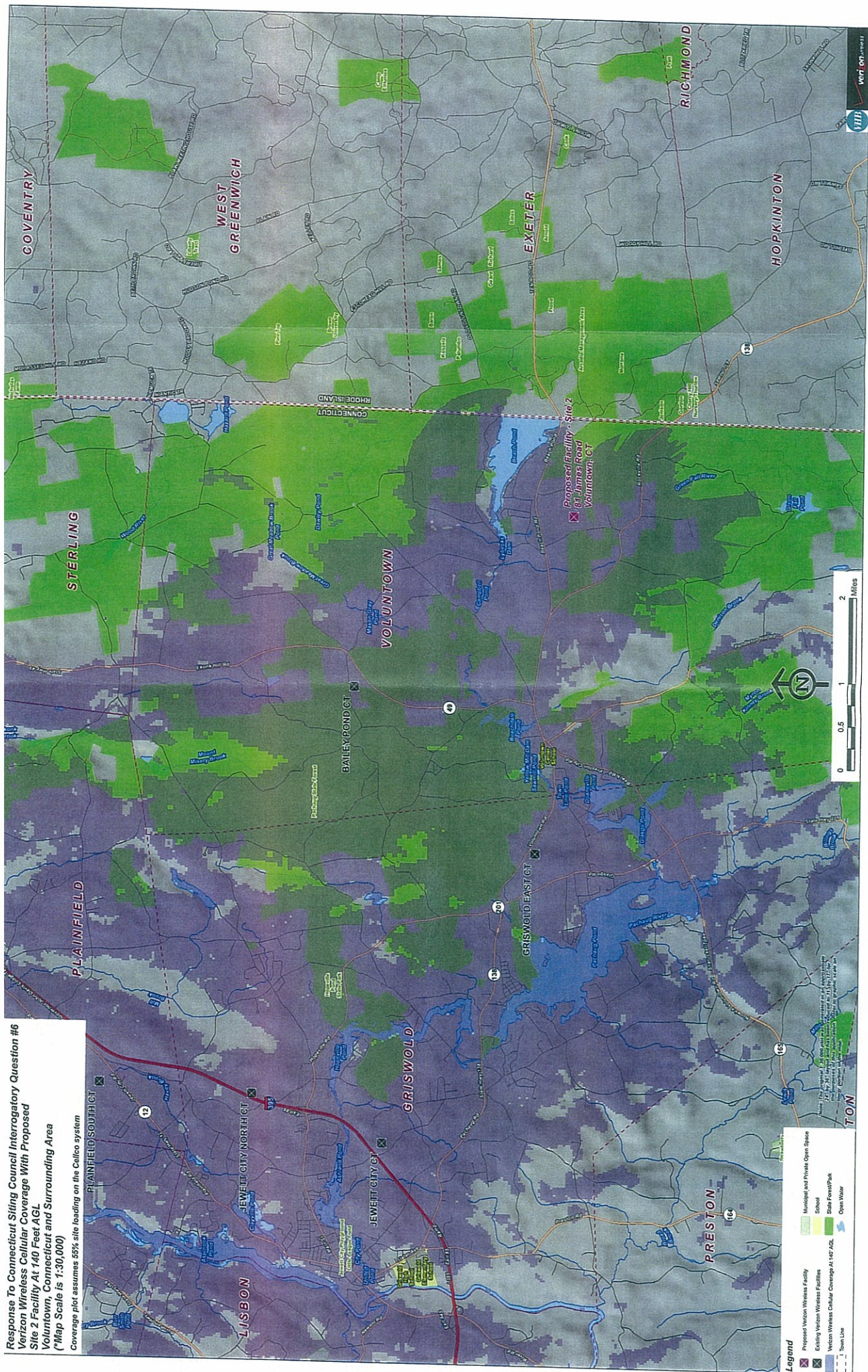
**Legend**

- Proposed Verizon Wireless Facility
- Municipal and Private Open Space
- Existing Verizon Wireless Facilities
- School
- Verizon Wireless PCS Coverage At 140 Feet AGL
- Salt Ponds/Sloughs
- Town Line
- Open Water





Response To Connecticut Siting Council Interrogatory Question #6  
 Verizon Wireless Cellular Coverage With Proposed  
 Site 2 Facility At 140 Feet AGL  
 Voluntown, Connecticut and Surrounding Area  
 (\*Map Scale is 1:30,000)  
 Coverage plot assumes 55% site loading on the Celico system



**Legend**

- Proposed Verizon Wireless Facility
- Municipal and Private Open Space
- Existing Verizon Wireless Facilities
- School
- State Power/Pole
- Verizon Wireless Cellular Coverage At 140 AGL
- Open Water
- Town Line





General Power Density

Site Name: Voluntown, CT  
 Cumulative Power Density

Operator	Operating Frequency (MHz)	Number of Trans.	ERP Per Trans. (watts)	Total ERP (watts)	Distance to Target (feet)	Calculated Power Density (mW/cm <sup>2</sup> )	Maximum Permissible Exposure* (mW/cm <sup>2</sup> )	Fraction of MPE (%)
VZW PCS	1970	3	476	1428	160	0.0201	1.0	2.01%
VZW Cellular	869	9	512	4608	160	0.0647	0.579333	11.17%
VZW 700	757	1	822	822	160	0.0115	0.497333	2.32%
<b>Total Percentage of Maximum Permissible Exposure</b>								<b>15.50%</b>

\*Guidelines adopted by the FCC on August 1, 1996, 47 CFR Part 1 based on NCRP Report 86, 1986 and generally on ANSI/IEEE C95.1-1992

MHz = Megahertz

mW/cm<sup>2</sup> = milliwatts per square centimeter

ERP = Effective Radiated Power

Absolute worst case maximum values used.



