

J:\41240\_32\graphics\FIGURES\41240\_32\_photos\mms.indd

PHOTO TAKEN FROM SCHOOL STREET NORTH OF JEWELL STREET ADJACENT TO HOUSE #42, LOOKING NORTHWEST  
DISTANCE FROM THE PHOTOGRAPH LOCATION TO SITE IS 1.65 MILES +/-



J:\11240\_32\graphics\FIGURES\11240\_32\_photosims.indd

PHOTO TAKEN FROM SCHOOL STREET NORTH OF JEWELL STREET ADJACENT TO HOUSE #42, LOOKING NORTHWEST  
DISTANCE FROM THE PHOTOGRAPH LOCATION TO SITE IS 1.65 MILES +/-



PHOTO TAKEN FROM SCHOOL STREET NORTH OF JEWELL STREET, LOOKING NORTHWEST  
DISTANCE FROM THE PHOTOGRAPH LOCATION TO SITE IS 1.68 MILES +/-



PHOTO TAKEN FROM SCHOOL STREET NORTH OF JEWELL STREET, LOOKING NORTHWEST  
DISTANCE FROM THE PHOTOGRAPH LOCATION TO SITE IS 1.68 MILES +/-



PHOTO TAKEN FROM POPPLE SWAMP ROAD, LOOKING NORTHWEST - BALLOON IS NOT VISIBLE FROM THIS LOCATION  
DISTANCE FROM THE PHOTOGRAPH LOCATION TO SITE IS 0.45 MILE +/-



PHOTO TAKEN FROM ROUTE 7 ACROSS FROM HOUSATONIC MEADOWS STATE PARK CAMPGROUND, LOOKING NORTHEAST  
- BALLOON IS NOT VISIBLE FROM THIS LOCATION  
DISTANCE FROM THE PHOTOGRAPH LOCATION TO SITE IS 0.98 MILE +/-



PHOTO TAKEN FROM ROUTE 7, LOOKING NORTHEAST - BALLOON IS NOT VISIBLE FROM THIS LOCATION  
DISTANCE FROM THE PHOTOGRAPH LOCATION TO SITE IS 1.47 MILES +/-



PHOTO TAKEN FROM ROUTE 7 AT COVERED BRIDGE, LOOKING SOUTH - BALLOON IS NOT VISIBLE FROM THIS LOCATION  
DISTANCE FROM THE PHOTOGRAPH LOCATION TO SITE IS 1.80 MILES +/-







PHOTO TAKEN FROM PINE STREET AT CORNWALL TOWN HALL, LOOKING WEST - BALLOON IS NOT VISIBLE FROM THIS LOCATION  
DISTANCE FROM THE PHOTOGRAPH LOCATION TO SITE IS 1.79 MILES +/-



J:\1240\_32\graphics\FIGURES\1240\_32\_photos\ms.indd

**PHOTO TAKEN FROM BOLTON HILL ROAD ADJACENT TO HOUSE #14A, LOOKING WEST - BALLOON IS NOT VISIBLE FROM THIS LOCATION**  
DISTANCE FROM THE PHOTOGRAPH LOCATION TO SITE IS 1.70 MILES +/-

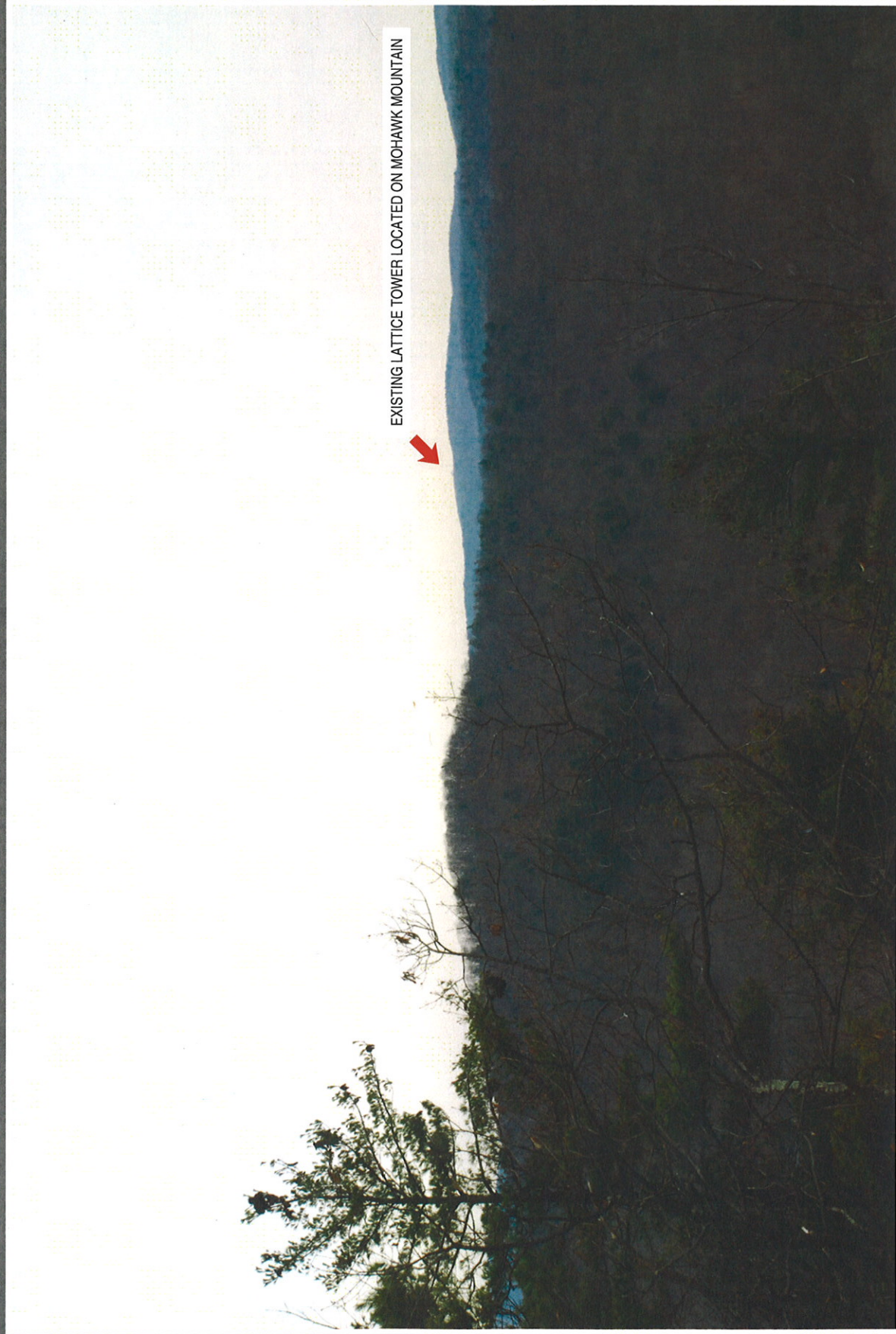


PHOTO TAKEN FROM PIERCE ROAD NORTH OF ROUTE 4, LOOKING NORTHWEST - BALLOON IS NOT VISIBLE FROM THIS LOCATION  
DISTANCE FROM THE PHOTOGRAPH LOCATION TO SITE IS 1.28 MILES +/-



J:\41240.32\graphics\FIGURES\41240\_32\_photos\ms.indd

**PHOTO TAKEN FROM ROUTE 4, LOOKING NORTHWEST - BALLOON IS NOT VISIBLE FROM THIS LOCATION  
DISTANCE FROM THE PHOTOGRAPH LOCATION TO SITE IS 1.11 MILES +/-**



EXISTING LATTICE TOWER LOCATED ON MOHAWK MOUNTAIN

PHOTO TAKEN FROM APPALACHIAN TRAIL AT PINE KNOB LOOKOUT, LOOKING NORTHEAST  
- BALLOON IS NOT VISIBLE FROM THIS LOCATION  
DISTANCE FROM THE PHOTOGRAPH LOCATION TO SITE IS 1.00 MILE +/-

---

# Attachment B

## Viewshed Map

Viewshed Analysis  
Proposed Verizon Wireless  
Telecommunications Facility  
Cornwall  
16 Bell Road Extension  
Cornwall, Connecticut

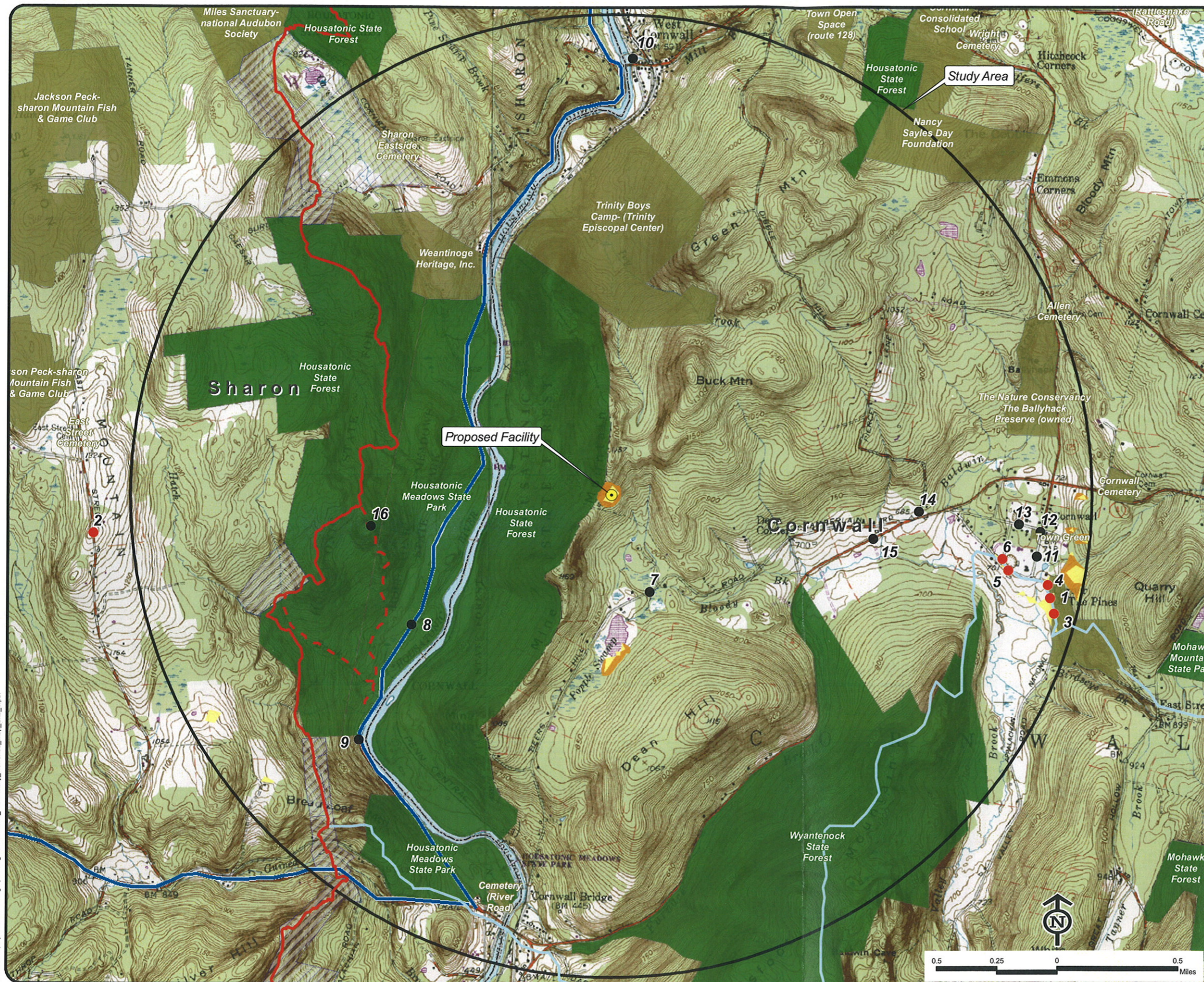
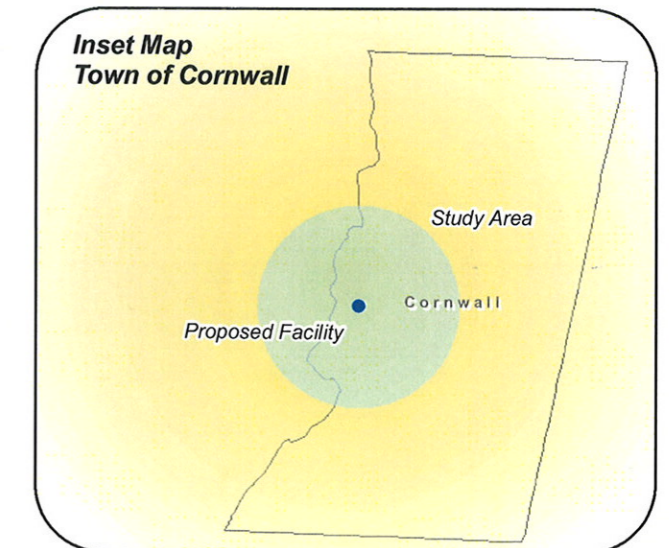
NOTE:  
 - Viewshed analysis conducted using ESRI's Spatial Analyst.  
 - Proposed Facility height is 110 feet.  
 - Existing tree canopy height estimated at 65 feet.  
 - Study Area is comprised of a two-mile radius surrounding the proposed facility and includes 8,042 acres of land.

DATA SOURCES:  
 - Digital elevation model (DEM) derived from Connecticut LiDAR-based Digital Elevation Data (collected in 2000) with a 10-foot spatial resolution produced by the University of Connecticut and the Center for Land Use Education and Research (CLEAR); 2007  
 - Forest areas derived from 2006 digital orthophotos with 1-foot pixel resolution; digitized by VHB, 2009  
 - Base map comprised of Cornwall (1984), Ellsworth (1969), Sharon (1969) and South Canaan (1969) USGS Quadrangle Maps  
 - Protected municipal and private open space properties and federal protected properties and data layers provided by CT DEP, 1997  
 - Protected CT DEP properties data layer provided by CTDEP, May 2007  
 - CT DEP boat launches data layer provided by CT DEP, 1994  
 - Scenic Roads layer derived from available State and Local listings.

Map Compiled December, 2009

**Legend**

- |  |                                    |
|--|------------------------------------|
| Proposed Site Location                                       | CT DEP Protected Properties (2007) |
| Photographs - August 7, 2009 and December 2, 2009            | State Forest                       |
| Balloon is not visible                                       | State Park                         |
| Balloon visible above trees                                  | DEP Owned Waterbody                |
| Potential Seasonal Visibility (Approximately 13 acres)       | State Park Scenic Reserve          |
| Year-Round Visibility (Approximately 14 acres)               | Historic Preserve                  |
| Protected Municipal and Private Open Space Properties (1997) | Natural Area Preserve              |
| Preservation   | Fish Hatchery                      |
| Conservation   | Flood Control                      |
| Existing Preserved Open Space                                | Other                              |
| Recreation   | State Park Trail                   |
| General Recreation   | Water Access                       |
| School   | Wildlife Area                      |
| Uncategorized  | Wildlife Sanctuary                 |
| Federal Protected Properties (1997)                          |                                    |
| CT DEP Boat Launches (1994)                                  |                                    |
| Scenic Road (State and Local)                                |                                    |
| Appalachian Trail  |                                    |
| Pine Knob Loop (CT Blue Blaze)                               |                                    |
| Mohawk Trail (CT Blue Blaze)                                 |                                    |
| Town Line  |                                    |



/c:\mddat\projects\41240\_32\graphics\figures\Cornwall\_Preliminary\_viewshed\_map\_Site\_1.pdf