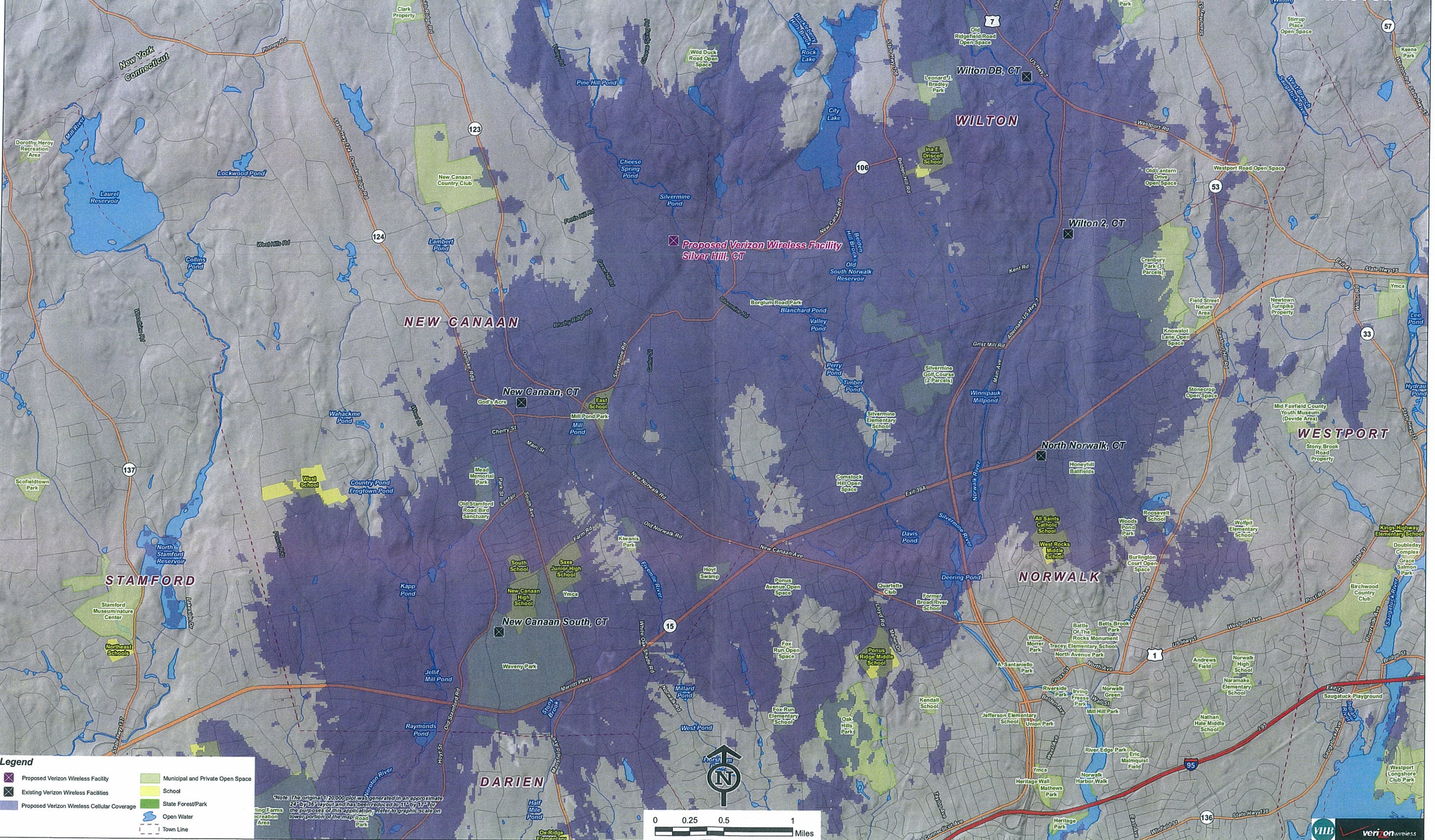


**Existing Verizon Wireless Cellular Coverage
With Proposed Facility At 97 Feet AGL
New Canaan, Connecticut and Surrounding Area
(*Map Scale is 1:20,000)**

Coverage plot assumes 55% site loading on the Cellco system



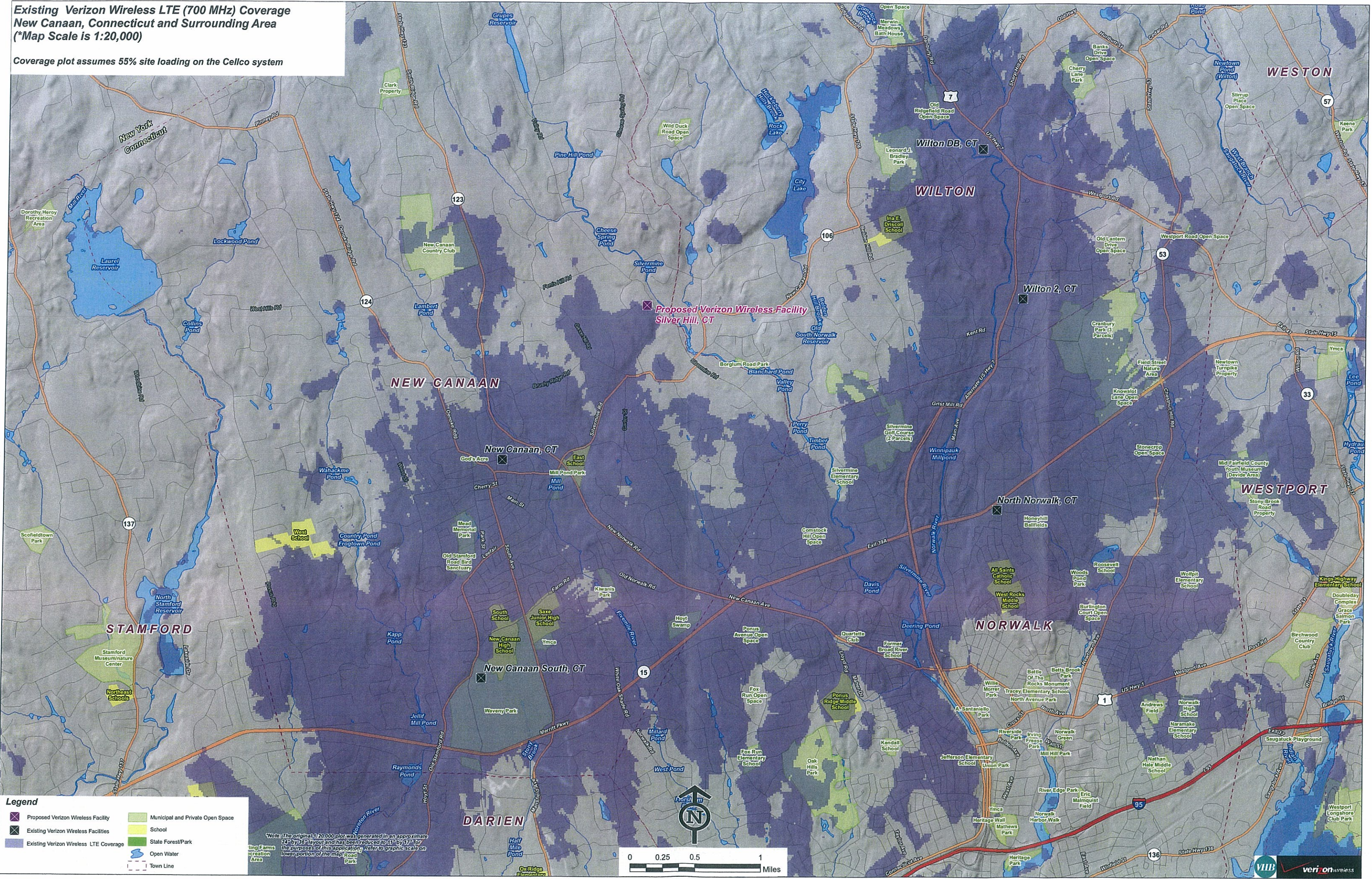
Legend

- X Proposed Verizon Wireless Facility
- X Existing Verizon Wireless Facilities
- Proposed Verizon Wireless Cellular Coverage
- Municipal and Private Open Space
- School
- State Forest/Park
- Open Water
- Town Line

*Note: The original 1:20,000 plot was generated in an approximate 24" x 36" layout and has been reduced to 11" x 17" for the purposes of this application. Refer to graphic scale on lower portion of the map for Road Park

**Existing Verizon Wireless LTE (700 MHz) Coverage
New Canaan, Connecticut and Surrounding Area
(*Map Scale is 1:20,000)**

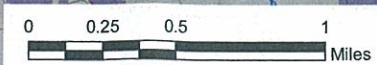
Coverage plot assumes 55% site loading on the Celco system



Legend

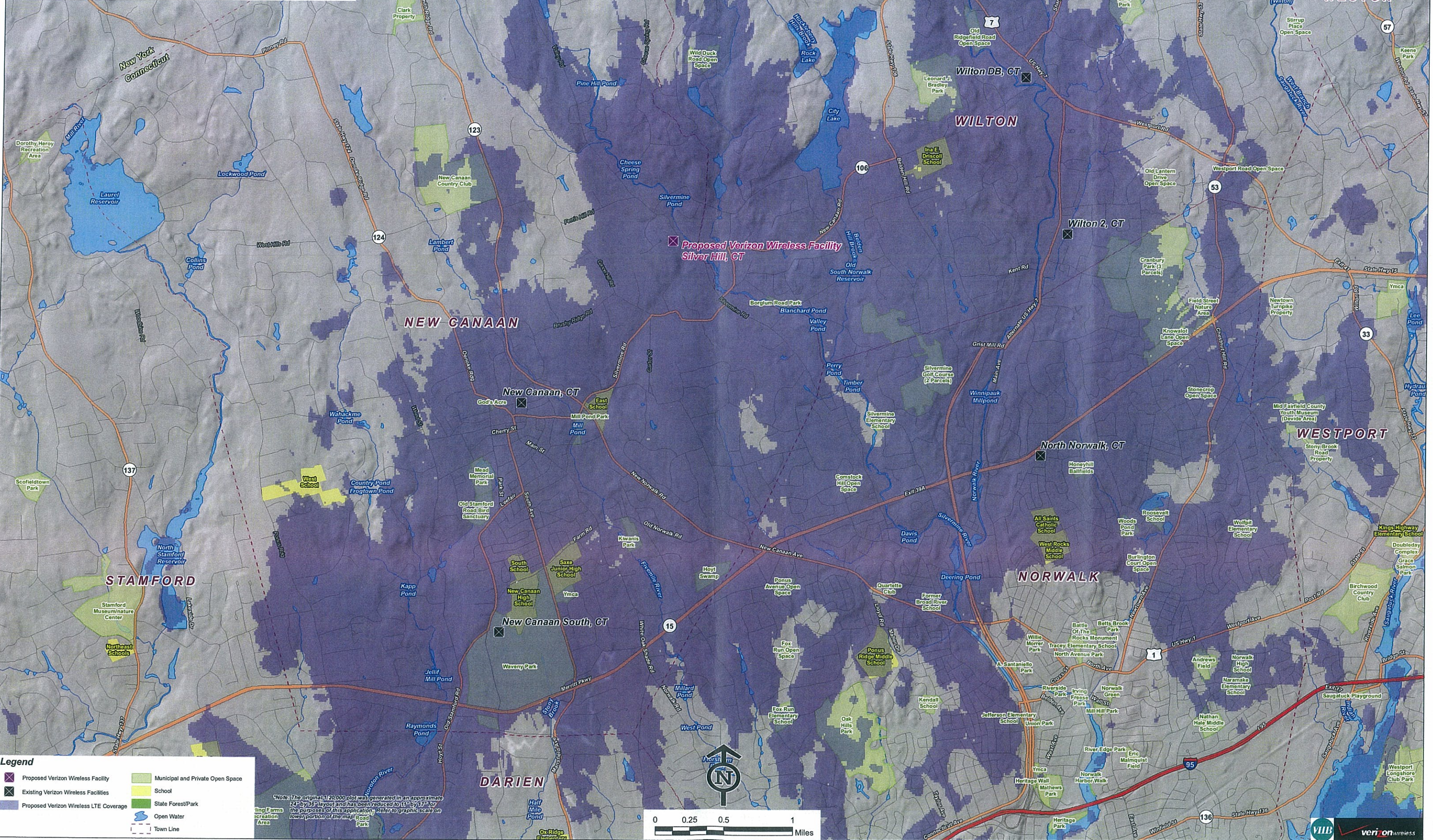
- ✕ Proposed Verizon Wireless Facility
- ✕ Existing Verizon Wireless Facilities
- Existing Verizon Wireless LTE Coverage
- Municipal and Private Open Space
- School
- State Forest/Park
- Open Water
- Town Line

*Note: The original 1:20,000 plot was generated in an approximate 24" by 36" layout and has been reduced to 11" by 17" for the purposes of this application. Refer to graphic scale on lower portion of the map for Road Park



**Existing Verizon Wireless LTE (700 MHz) Coverage
With Proposed Facility At 97 Feet AGL
New Canaan, Connecticut and Surrounding Area
(*Map Scale is 1:20,000)**

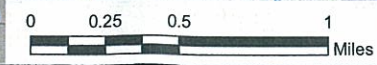
Coverage plot assumes 55% site loading on the Cellco system



Legend

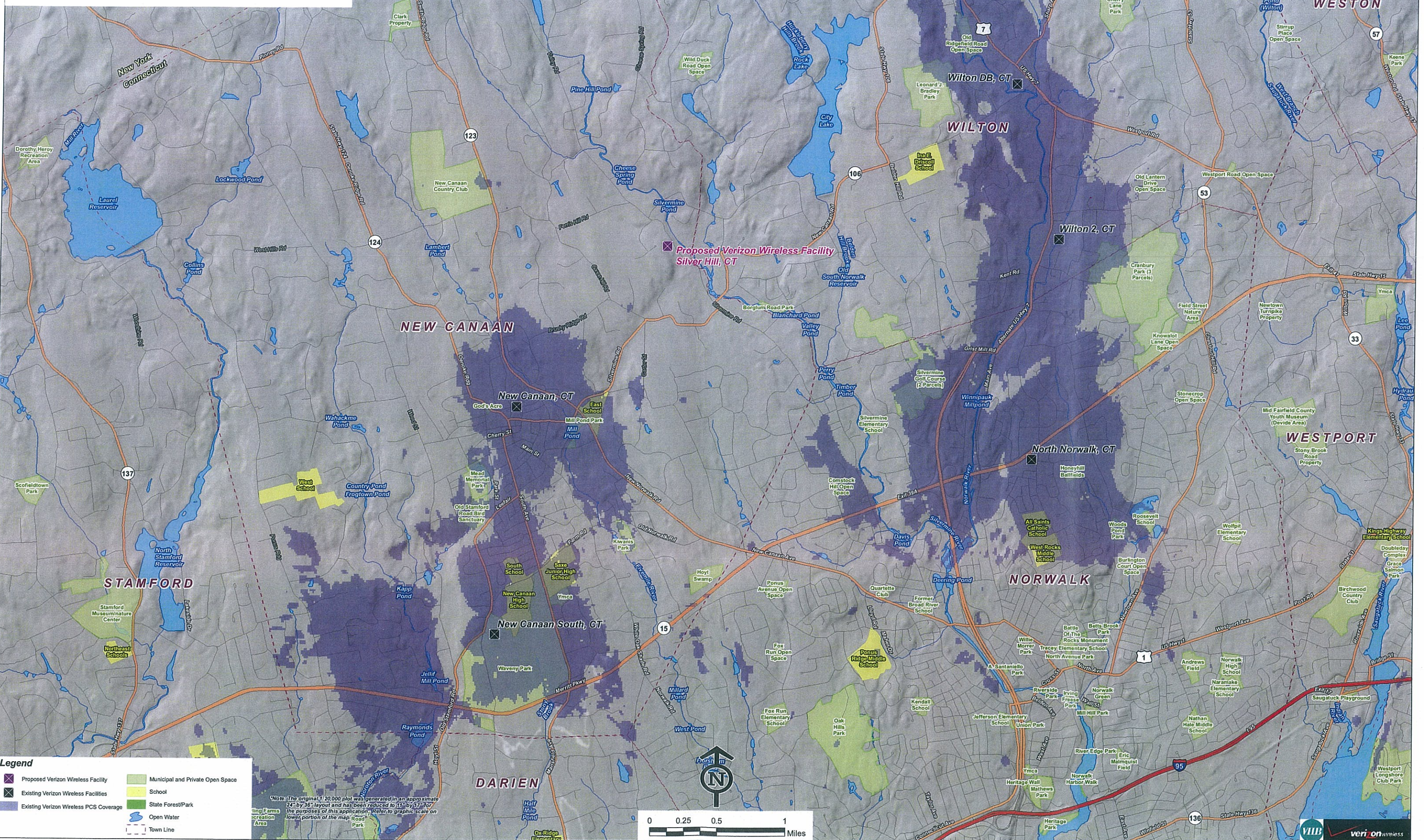
- X Proposed Verizon Wireless Facility
- X Existing Verizon Wireless Facilities
- Proposed Verizon Wireless LTE Coverage
- Municipal and Private Open Space
- School
- State Forest/Park
- Open Water
- Town Line

*Note: The original 1:20,000 plot was generated in an approximately 24.07x36.15 layout and has been reduced to 11x37.17 for the purposes of this application. Refer to graphic scale on lower portion of the map.



**Existing Verizon Wireless PCS Coverage
New Canaan, Connecticut and Surrounding Area
(*Map Scale is 1:20,000)**

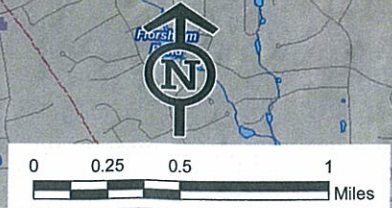
Coverage plot assumes 55% site loading on the Cellco system



Legend

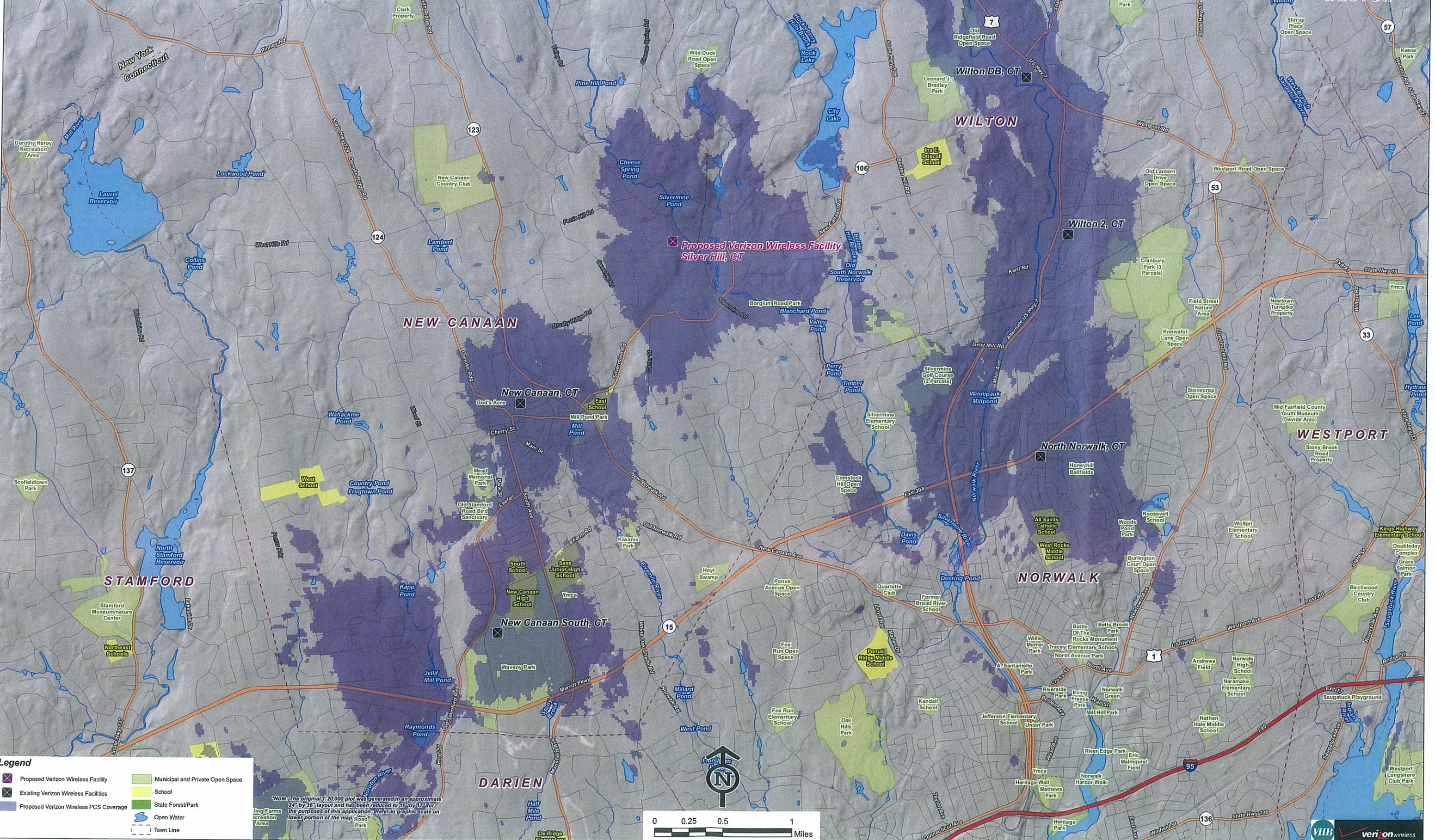
- Proposed Verizon Wireless Facility
- Existing Verizon Wireless Facilities
- Existing Verizon Wireless PCS Coverage
- Municipal and Private Open Space
- School
- State Forest/Park
- Open Water
- Town Line

Note: The original 1:20,000 plot was generated in an approximate 24" by 36" layout and has been reduced to 11" by 17" for the purposes of this application. Refer to graphic scale on lower portion of the map.



**Existing Verizon Wireless PCS Coverage
With Proposed Facility At 97 Feet AGL
New Canaan, Connecticut and Surrounding Area
(*Map Scale is 1:20,000)**

Coverage plot assumes 55% site loading on the Cellco system



Legend

- X Proposed Verizon Wireless Facility
- X Existing Verizon Wireless Facilities
- Proposed Verizon Wireless PCS Coverage
- Municipal and Private Open Space
- School
- State Forest/Park
- Open Water
- Town Line

Note: The original 1:20,000 plot was generated in an approximate 24" by 36" layout and has been reduced to 11" by 17" for the purposes of this application. Refer to graphic scale on lower portion of the map.

