

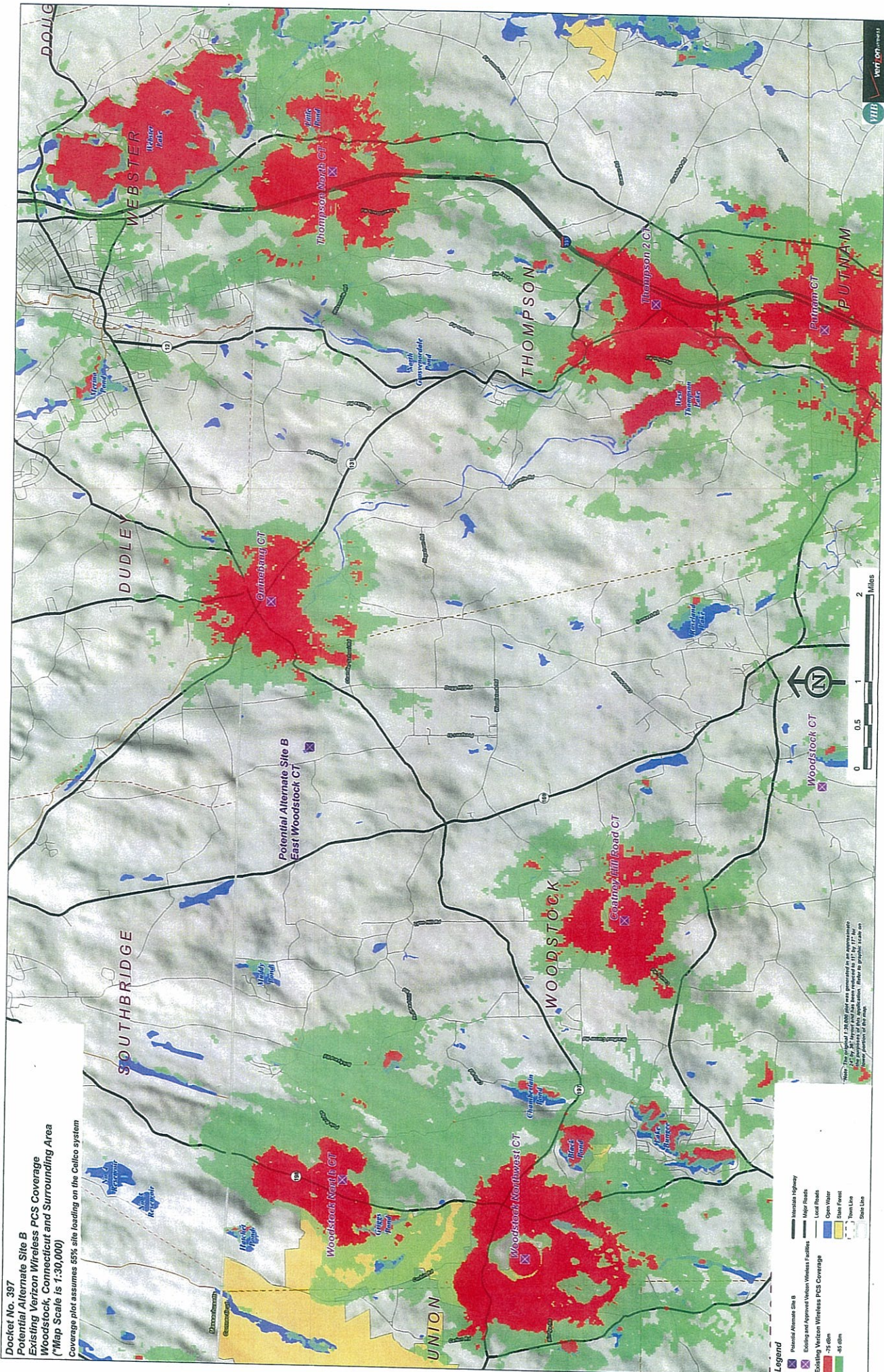
Docket No. 397
 Potential Alternate Site B
 Existing Verizon Wireless Cellular Coverage
 Woodstock, Connecticut and Surrounding Area
 (*Map Scale is 1:30,000)
 Coverage plot assumes 55% site loading on the Celco system

Legend

- Potential Alternate Site B
- Existing Verizon Wireless Cellular Coverage
- 25 dBm
- 45 dBm
- Interstate Highway
- Major Roads
- Local Roads
- Open Water
- Shallow Water
- Tidal Lake
- Small Lake

*Note: This coverage plot was generated for an approximate 55% site loading on the Celco system. The coverage is not intended to represent the actual coverage of the system. The coverage is shown for the entire portion of the map.



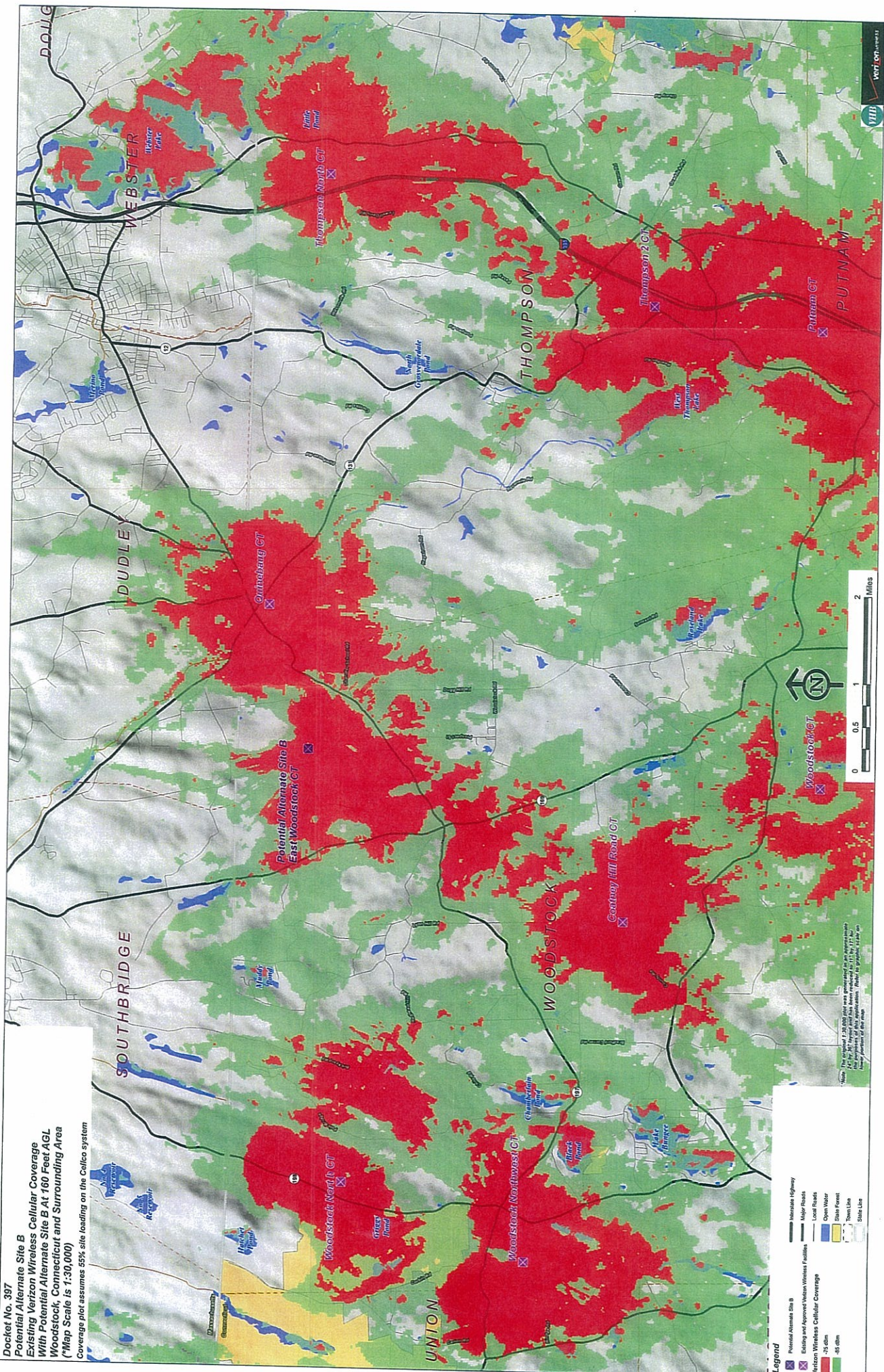


Docket No. 397
 Potential Alternate Site B
 Existing Verizon Wireless PCS Coverage
 Woodstock, Connecticut and Surrounding Area
 ("Map Scale is 1:30,000)
 Coverage plot assumes 65% site loading on the Calico system

- Legend**
- Potential Alternate Site B
 - Existing Verizon Wireless PCS Coverage
 - Potential Verizon Wireless PCS Coverage
 - 70 dBm
 - 65 dBm
 - Interstate Highway
 - Major Road
 - Local Road
 - Open Water
 - State Forest
 - Town Lake
 - State Line

*Notes: This coverage plot was generated as an approximation for the purpose of this map. The actual coverage may vary due to site location, terrain, and other factors. The map is not intended to be used for legal purposes.



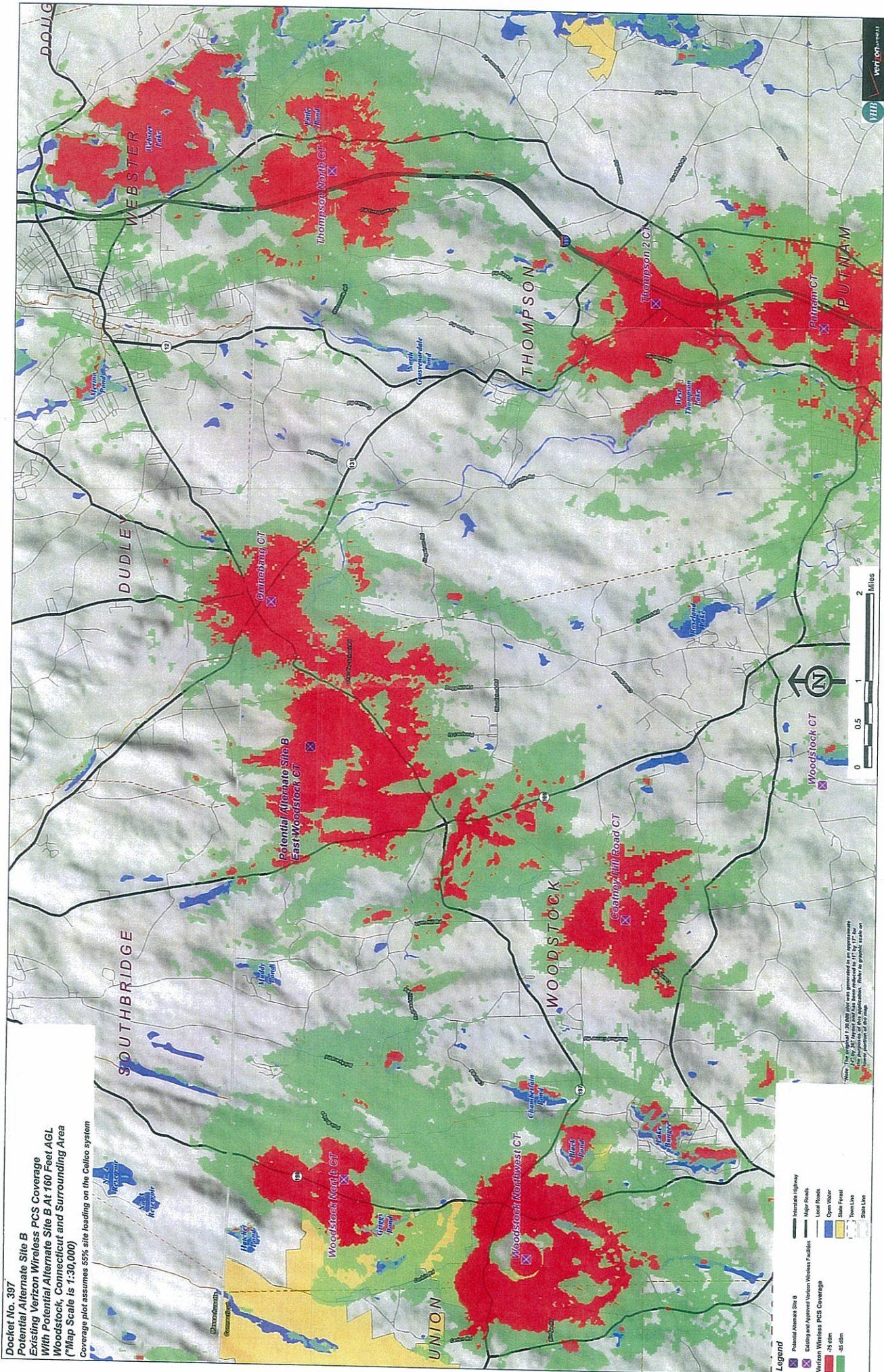


Docket No. 397
 Potential Alternate Site B
 Existing Verizon Wireless Cellular Coverage
 With Potential Alternate Site B At 160 Feet AGL
 Woodstock, Connecticut and Surrounding Area
 (*Map Scale is 1:30,000)
 Coverage plot assumes 65% site loading on the Celco system

- Legend**
- ⊗ Potential Alternate Site B
 - ⊗ Existing and Approved Verizon Wireless Facilities
 - ⊗ Verizon Wireless Cellular Coverage
 - 75 dBm
 - 45 dBm
 - Interstate Highway
 - Major Road
 - Local Road
 - Open Water
 - State Forest
 - State Line

*Note: The coverage plot was generated for an average tower height of 160 feet. The actual tower height may vary. The coverage plot is for informational purposes only.





Docket No. 397
 Potential Alternate Site B
 Existing Verizon Wireless PCS Coverage
 With Potential Alternate Site B At 160 Feet AGL
 Woodstock, Connecticut and Surrounding Area
 (*Map Scale is 1:30,000)
 Coverage plot assumes 65% site loading on the Celco system

Legend

- Potential Alternate Site B
- Existing and Approved Verizon Wireless Facilities
- Verizon Wireless PCS Coverage
- Interstate Highway
- Major Road
- Local Road
- Open Water
- State Forest
- Town Line
- State Line
- 75-95 dBm
- 55-75 dBm

*Note: This coverage plot was generated as an approximation. The actual coverage may vary due to terrain, obstructions, and other factors. The map is not intended to be used for legal purposes.

