

### Mechanical specifications

Length	1200 mm	47.2 in
Width	140 mm	5.5 in
Depth	335 mm	13.2 in
Depth with z-bracket	375 mm	14.8 in
Weight <sup>4)</sup>	5.4 kg	12 lbs
Wind Area Fore/Aft	0.17 m <sup>2</sup>	1.8 ft <sup>2</sup>
Wind Area Side	0.40 m <sup>2</sup>	4.3 ft <sup>2</sup>
Max Wind Survivability	>201 km/hr	>125 mph
Wind Load @ 100 mph (161 km/hr)		
Fore/Aft	254 N	57 lbf
Side	574 N	129 lbf

Antenna consisting of aluminum alloy with brass feedlines covered by a gray, UV safe fiberglass radome. RoHS compliant.

### Mounting & Downtilting

Mounting hardware attaches to pipe diameter Ø50-102 mm; Ø2.0-4.0 in. If the lock-down brace is used, the maximum diameter is Ø88.9 mm (3.5 in).

Mounting & Downtilt Bracket Kit 21699999

### Electrical specifications

Frequency Range	806-960 MHz
Impedance	50Ω
Connector <sup>3)</sup>	NE or E-DIN Female 1 port / Center
VSWR <sup>1)</sup>	≤ 1.4:1
Polarization	Vertical
Gain <sup>1)</sup>	12.5 dBd 14.5 dBi
Power Rating <sup>2)</sup>	500 W
Half Power Angle <sup>1)</sup>	
Horizontal Beamwidth	80°
Vertical Beamwidth	15°
Electrical downtilt <sup>5)</sup>	5°
Null fill <sup>1)</sup>	15%
Lightning protection	Direct ground

1) Typical values.

2) Power rating limited by connector only.

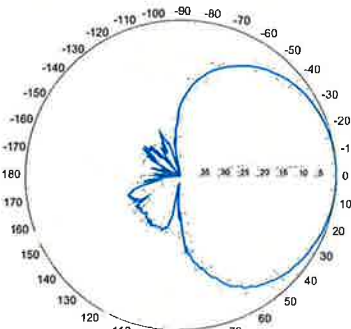
3) NE indicates an elongated N connector.  
E-DIN indicates an elongated DIN connector.

4) Antenna weight does not include brackets.

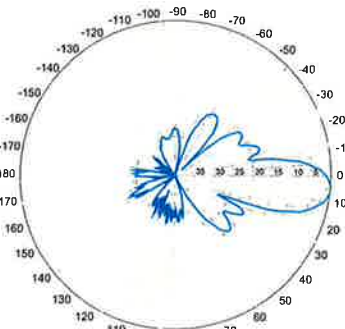
5) Add'l downtilts may be available. Check website for details.

Improvements to mechanical and/or electrical performance of the antenna may be made without notice.

### Radiation-pattern<sup>1)</sup>



Horizontal



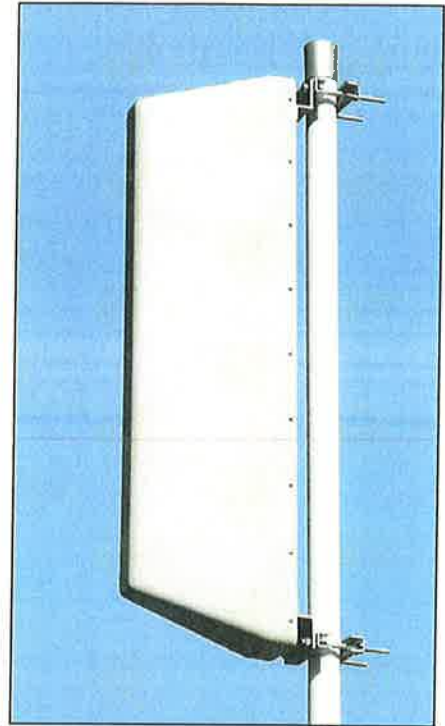
Vertical

Radiation patterns for all antennas are measured with the antenna mounted on a fiberglass pole.

Mounting on a metal pole will typically improve the front-to-back ratio.

### LPA-80080/4CF \_\_ 5°

When ordering replace "\_\_" with connector type.



Featuring our Exclusive  
3T Technology™  
Antenna Design:

- True log-periodic design allows for superior front-to-side characteristics to minimize sector overlap.
- Unique feedline design eliminates the need for conventional solder joints in the signal path.
- A non-collinear system with access to every radiating element for broad bandwidth and superior performance.
- Air as insulation for virtually no internal signal loss.

#### Warranty:

This antenna is under a five-year limited warranty for repair or replacement.

Revision Date: 12/26/08

806-960 MHz

### Mechanical specifications

Length	2400 mm	94.5 in
Width	545 mm	21.3 in
Depth	350 mm	13.7 in
Depth with z-bracket	390 mm	15.4 in
Weight <sup>4)</sup>	18.6 kg	41.0 lbs
Wind Area Fore/Aft <sup>6)</sup>	0.75 m <sup>2</sup>	8.1 ft <sup>2</sup>
Wind Area Side <sup>6)</sup>	0.96 m <sup>2</sup>	10.3 ft <sup>2</sup>
Max Wind Survivability <sup>6)</sup>	>201 km/hr	>125 mph
Wind Load @ 100 mph (161 km/hr) <sup>6)</sup>		
Fore/Aft	1245 N	280 lbf
Side	1250 N	281 lbf

Antenna consisting of aluminum alloy with brass feedlines covered by a gray, UV safe fiberglass radome. Aluminum reflector. RoHS compliant.

### Mounting & Downtilting

Mounting hardware attaches to pipe diameter Ø50-102 mm; Ø2.0-4.0 in. If the lock-down brace is used, the maximum diameter is Ø88.9 mm (3.5 in).

Mounting & Downtilt Bracket Kit 21700000

### Electrical specifications

Frequency Range	806-941 MHz
Impedance	50Ω
Connector <sup>3)</sup>	NE or E-DIN Female 1 port / Center
VSWR <sup>1)</sup>	≤ 1.35:1
Polarization	Vertical
Gain <sup>1)</sup>	19 dBd
Power Rating <sup>2)</sup>	500 W
Half Power Angle <sup>1)</sup>	
Horizontal Beamwidth	40°
Vertical Beamwidth	7°
Electrical downtilt <sup>5)</sup>	1.25°
Null fill <sup>1)</sup>	5%
Lightning protection	Direct ground

1) Typical values.

2) Power rating limited by connector only.

3) NE Indicates an elongated N connector.  
E-DIN Indicates an elongated DIN connector.

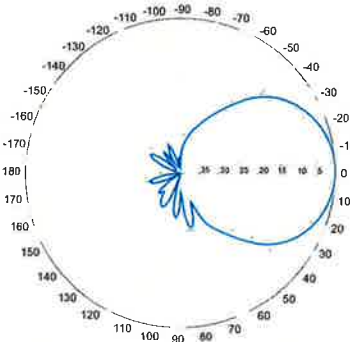
4) Antenna weight does not include brackets.

5) Add'l downtilts may be available. Check website for details.

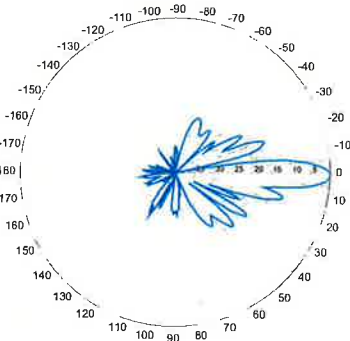
6) Values reflect installation with all three brackets utilized.

Improvements to mechanical and/or electrical performance of the antenna may be made without notice.

Radiation-pattern<sup>1)</sup>



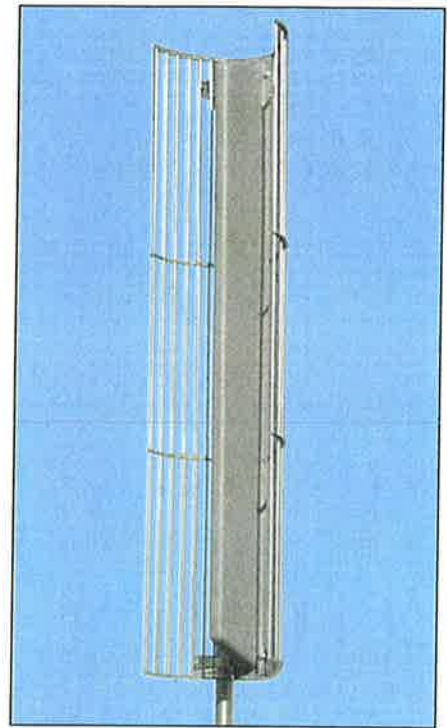
Horizontal



Vertical

Radiation patterns for all antennas are measured with the antenna mounted on a fiberglass pole.

Mounting on a metal pole will typically improve the front-to-back ratio.



LPA-4019 \_\_\_  
When ordering replace " \_\_\_ " with connector type.



Featuring our Exclusive  
3T Technology™  
Antenna Design:

- True log-periodic design allows for superior front-to-side characteristics to minimize sector overlap.
- Unique feedline design eliminates the need for conventional solder joints in the signal path.
- A non-collinear system with access to every radiating element for broad bandwidth and superior performance.
- Air as insulation for virtually no internal signal loss.

### Warranty:

This antenna is under a five-year limited warranty for repair or replacement.

Revised Date: 06/15/00

806-941 MHz

### Mechanical specifications

Length	1800 mm	70.9 in
Width	140 mm	5.5 in
Depth	335 mm	13.2 in
Depth with z-bracket	375 mm	14.8 in
Weight <sup>4)</sup>	9.5 kg	21.0 lbs
Wind Area Fore/Aft <sup>6)</sup>	0.25 m <sup>2</sup>	2.7 ft <sup>2</sup>
Wind Area Side <sup>6)</sup>	0.61 m <sup>2</sup>	6.6 ft <sup>2</sup>
Max Wind Survivability <sup>6)</sup>	>201 km/hr	>125 mph
Wind Load @ 100 mph (161 km/hr) <sup>6)</sup>		
Fore/Aft	415 N	93 lbf
Side	878 N	198 lbf

Antenna consisting of aluminum alloy with brass feedlines covered by a gray, UV safe fiberglass radome. RoHS compliant.

### Mounting & Downtilting

Mounting hardware attaches to pipe diameter Ø50-102 mm; Ø2.0-4.0 in. If the lock-down brace is used, the maximum diameter is Ø88.9 mm (3.5 in).

Mechanical downtilt angle 0-22°

Mounting & Downtilt Bracket Kit 21700000

### Electrical specifications

Frequency Range	806-960 MHz
Impedance	50Ω
Connector <sup>3)</sup>	NE or E-DIN Female 1 port / Center
VSWR <sup>1)</sup>	≤ 1.4:1
Polarization	Vertical
Gain <sup>1)</sup>	14 dBd
Power Rating <sup>2)</sup>	500 W
Half Power Angle <sup>1)</sup>	
Horizontal Beamwidth	80°
Vertical Beamwidth	10°
Electrical downtilt <sup>5)</sup>	0°
Null fill <sup>1)</sup>	10%
Lightning protection	Direct ground

1) Typical values.

2) Power rating limited by connector only.

3) NE indicates an elongated N connector.  
E-DIN Indicates an elongated DIN connector.

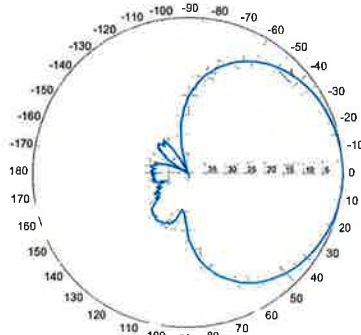
4) Antenna weight does not include brackets.

5) Add'l downtilts may be available. Check website for details.

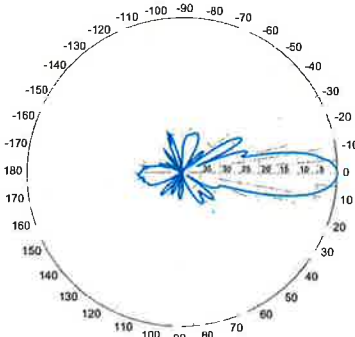
6) Values reflect installation with all three brackets utilized.

Improvements to mechanical and/or electrical performance of the antenna may be made without notice.

### Radiation-pattern



Horizontal



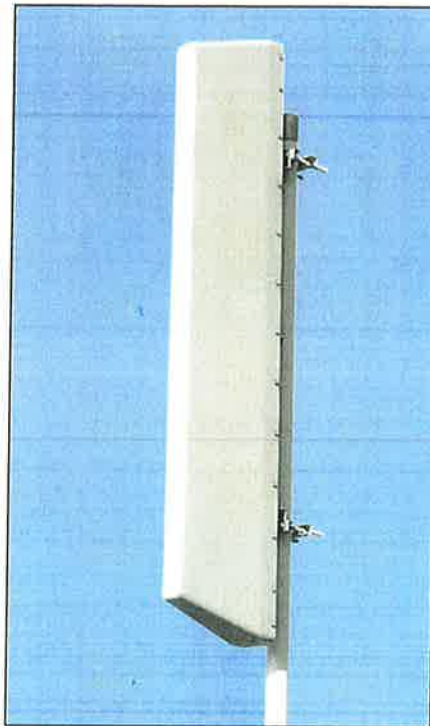
Vertical

Radiation patterns for all antennas are measured with the antenna mounted on a fiberglass pole.

Mounting on a metal pole will typically improve the front-to-back ratio.

### LPA-80080/6CF

When ordering replace "      " with connector type.



Featuring our Exclusive  
3T Technology™  
Antenna Design:

- True log-periodic design allows for superior front-to-side characteristics to minimize sector overlap.
- Unique feedline design eliminates the need for conventional solder joints in the signal path.
- A non-collinear system with access to every radiating element for broad bandwidth and superior performance.
- Air as insulation for virtually no internal signal loss.

#### Warranty:

This antenna is under a five-year limited warranty for repair or replacement.

Revision Date: 08/18/16

806-960 MHz



Slant +/- 45° Dual Polarized, Panel 63° / 18.5 dBi

## BXA-185063/8CF \_\_ 2°

When ordering replace " \_\_ " with connector type.

### Mechanical specifications

Length	1238 mm	48.8 in
Width	154 mm	6.1 in
Depth	80 mm	3.2 in
Depth with t-bracket	108 mm	4.3 in
4) Weight	4.5 kg	10.0 lbs
Wind Area		
Fore/Aft	0.19 m <sup>2</sup>	2.1 ft <sup>2</sup>
Side	0.10 m <sup>2</sup>	1.1 ft <sup>2</sup>
Rated Wind Velocity (Safety factor 2.0)	>322 km/hr	>200 mph
Wind Load @ 100 mph (161 km/hr)		
Fore/Aft	288 N	65 lbs
Side	170 N	38 lbs

Antenna consisting of aluminum alloy with brass feedlines covered by a UV safe fiberglass radome.

### Mounting and Downtilting

Mounting brackets attach to a pipe diameter of Ø50-102 mm (2.0-4.0 in).

Mounting bracket kit #26799997

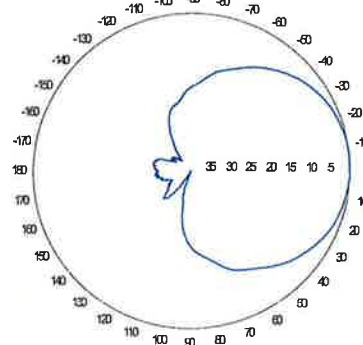
Downtilt bracket kit #26799999

The downtilt bracket kit includes the mounting bracket kit.

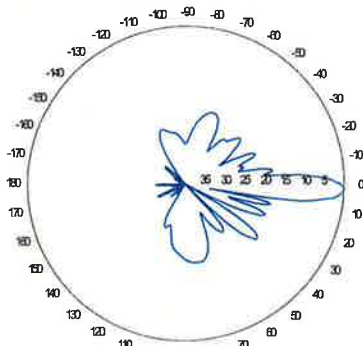
### Electrical specifications

Frequency Range	1850-1990 MHz
Impedance	50Ω
3) Connector(s)	NE or E-DIN 2 ports / center
1) VSWR	≤ 1.4:1
Polarization	Slant ± 45°
1) Isolation Between Ports	< -30 dB
1) Gain	18.5 dBi
2) Power Rating	250 W
1) Half Power Angle	
H-Plane	63°
E-Plane	7°
1) Electrical Downtilt	2°
1) Null Fill	5%
Lightning Protection	Direct Ground

### Radiation pattern<sup>1)</sup>



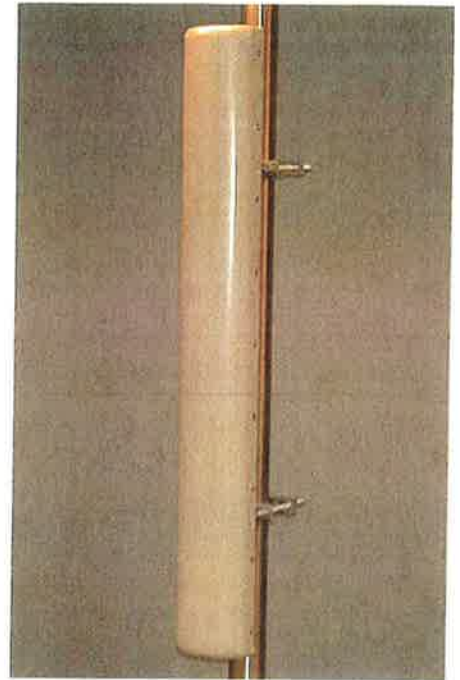
Horizontal



Vertical

Radiation patterns for all antennas are measured with the antenna mounted on a fiberglass pole.

Mounting on a metal pole will typically improve the Front-to-Back ratio.



**Amphenol Antel's Exclusive 3T (True Transmission Line Technology) Antenna Design:**

- Watercut brass feedline assembly for consistent performance.
- Unique feedline design eliminates the need for conventional solder joints in the signal path.
- A non-collinear system with access to every radiating element for broad bandwidth and superior performance.
- Air as insulation for virtually no internal signal loss.

*This Amphenol Antel antenna is under a five-year limited warranty for repair or replacement.*

**Antenna available with center-fed connectors only.**

Patented Dipole Design: U.S. Patent No. 6,597,324 B2

- 1) Typical values.
- 2) Power rating limited by connector only.
- 3) NE indicates an elongated N connector. E-DIN indicates an elongated DIN connector.
- 4) The antenna weight listed above does not include the bracket weight.

Improvements to mechanical and/or electrical performance of the antenna may be made without notice.

**CF Denotes a Center-Fed Connector.**

**1850-1990 MHz**

Amphenol Antel, Inc. 1300 Capital Drive Rockford, Illinois 61109 USA Tel. (815) 399-0001  
Toll-Free (888) 417-9562 Fax. (815) 399-0156 antel@antelinc.com www.antelinc.com

**Amphenol Antel, Inc.**  
The Antenna Technology Company

Revision Date: 7/11/07

Slant +/- 45° Dual Polarized, Panel 63° / 20.5 dBi

# BXA-185063/12CF

When ordering replace "\_\_\_" with connector type.

## Mechanical specifications

Length	1840 mm	72.4 in
Width	154 mm	6.1 in
Depth	105 mm	4.1 in
Depth with t-bracket	133 mm	5.2 in
4) Weight	6.8 kg	15.0 lbs
<b>Wind Area</b>		
Fore/Aft	0.28 m <sup>2</sup>	3.1 ft <sup>2</sup>
Side	0.19 m <sup>2</sup>	2.1 ft <sup>2</sup>
<b>Rated Wind Velocity (Safety factor 2.0)</b>		
	>201 km/hr	>125 mph
<b>Wind Load @ 100 mph (161 km/hr)</b>		
Fore/Aft	460 N	103.4 lbs
Side	304 N	68.3 lbs

Antenna consisting of aluminum alloy with brass feedlines covered by a UV safe fiberglass radome.

## Mounting and Downtilting

Mounting brackets attach to a pipe diameter of Ø50-102 mm (2.0-4.0 in).

Mounting bracket kit #26799997

Downtilt bracket kit #26799999

The downtilt bracket kit includes the mounting bracket kit.

## Electrical specifications

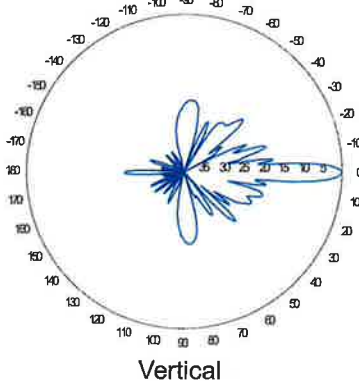
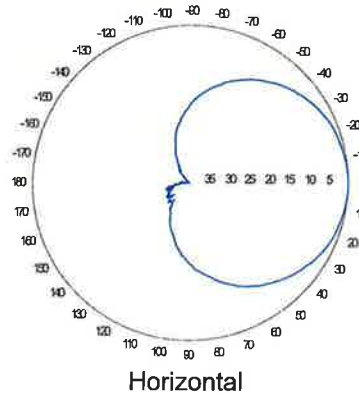
Frequency Range	1850-1990 MHz
Impedance	50Ω
3) Connector(s)	NE or E-DIN 2 ports / center
1) VSWR	≤ 1.4:1
Polarization	Slant ± 45°
1) Isolation Between Ports	< -30 dB
1) Gain	20.5 dBi
2) Power Rating	250 W
1) Half Power Angle	
H-Plane	63°
E-Plane	5°
1) Electrical Downtilt	0°
1) Null Fill	5%
Lightning Protection	Direct Ground

Patented Dipole Design: U.S. Patent No. 6,597,324 B2

- 1) Typical values.
- 2) Power rating limited by connector only.
- 3) NE indicates an elongated N connector.  
E-DIN indicates an elongated DIN connector.
- 4) The antenna weight listed above does not include the bracket weight.

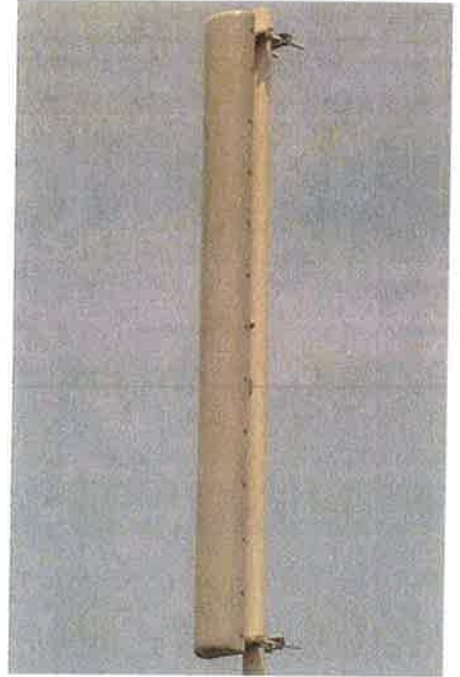
Improvements to mechanical and/or electrical performance of the antenna may be made without notice.

## Radiation pattern<sup>1)</sup>



Radiation patterns for all antennas are measured with the antenna mounted on a fiberglass pole.

Mounting on a metal pole will typically improve the Front-to-Back ratio.



**Amphenol Antel's Exclusive 3T (True Transmission Line Technology) Antenna Design:**

- Watercut brass feedline assembly for consistent performance.
- Unique feedline design eliminates the need for conventional solder joints in the signal path.
- A non-collinear system with access to every radiating element for broad bandwidth and superior performance.
- Air as insulation for virtually no internal signal loss.

*This Amphenol Antel antenna is under a five-year limited warranty for repair or replacement.*

**Antenna available with center-fed connectors only.**

CF Denotes a Center-Fed Connector.

1850-1990 MHz



Revision Date: 7/11/07

# Slant $\pm 45^\circ$ Dual Polarized FET Panel $63^\circ / 14.5$ dBd 696-900 MHz

## Mechanical specifications

Length	1804 mm	71.0 in
Width	285 mm	11.2 in
Depth	114 mm	4.5 in
Depth with z-bracket	154 mm	6.1 in
Weight <sup>4)</sup>	7.9 kg	17.0 lbs
Wind Area Fore/Aft	0.51 m <sup>2</sup>	5.5 ft <sup>2</sup>
Wind Area Side	0.21 m <sup>2</sup>	2.2 ft <sup>2</sup>
Max Wind Survivability	>201 km/hr	>125 mph
Wind Load @ 100 mph (161 km/hr)		
Fore/Aft	753 N	169 lbf
Side	351 N	79 lbf

Antenna consisting of aluminum alloy with brass feedlines covered by a UV safe fiber-glass radome.

## Mounting & Downtilting

Mounting hardware attaches to pipe diameter  $\varnothing 50$ -160 mm;  $\varnothing 2.0$ -6.3 in

Mounting Bracket Kit	36210002
Downtilt Bracket Kit	36114003

## Electrical specifications

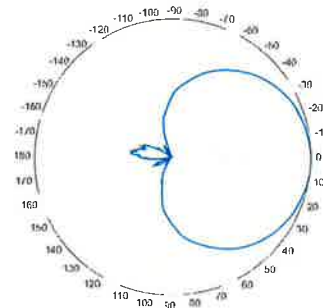
Frequency Range	696-900 MHz
Impedance	50 $\Omega$
Connector <sup>3)</sup>	NE or E-DIN Female 2 ports / Center
VSWR <sup>1)</sup>	$\leq 1.35:1$
Polarization	Slant $\pm 45^\circ$
Isolation Between Ports <sup>1)</sup>	< -25 dB
Gain <sup>1)</sup>	14.5 dBd 16.5 dBi
Power Rating <sup>2)</sup>	500 W
Half Power Angle <sup>1)</sup>	
Horizontal Beamwidth	63 $^\circ$
Vertical Beamwidth	11 $^\circ$
Electrical downtilt <sup>5)</sup>	2 $^\circ$
Null fill <sup>1)</sup>	5%
Lightning protection	Direct ground

Patented Dipole Design: U.S. Patent No. 6,608,600 B2

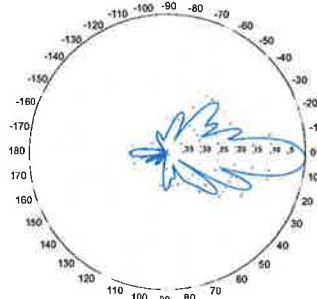
- 1) Typical values.
- 2) Power rating limited by connector only.
- 3) NE indicates an elongated N connector.  
E-DIN indicates an elongated DIN connector.
- 4) Antenna weight does not include brackets.
- 5) Add'l downtilts may be available. Check website for details.

Improvements to mechanical and/or electrical performance of the antenna may be made without notice.

Radiation-pattern  
750 MHz

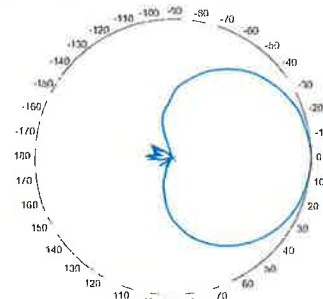


Horizontal

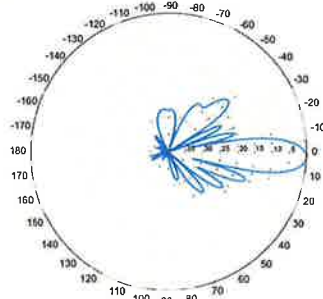


Vertical

850 MHz



Horizontal

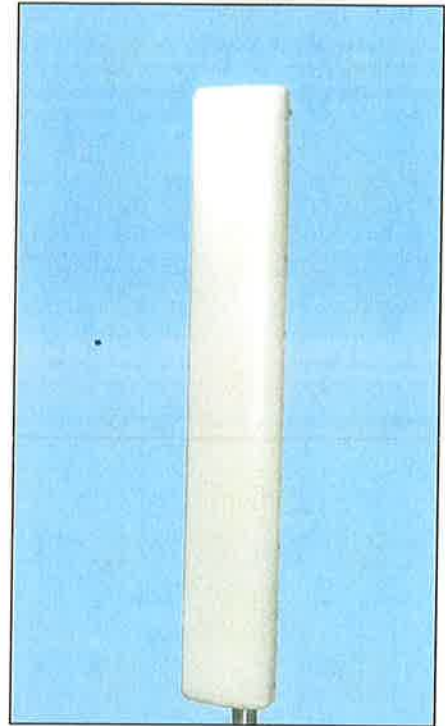


Vertical

696-900 MHz

## BXA-70063/6CF \_\_ 2 $^\circ$

When ordering replace "\_\_" with connector type.



Featuring our Exclusive  
3T Technology™  
Antenna Design:

- Watercut brass feedline assembly for consistent performance.
- Unique feedline design eliminates the need for conventional solder joints in the signal path.
- A non-collinear system with access to every radiating element for broad bandwidth and superior performance.
- Air as insulation for virtually no internal signal loss.

### Warranty:

This antenna is under a five-year limited warranty for repair or replacement.

Horizontal Date: 04-17-19