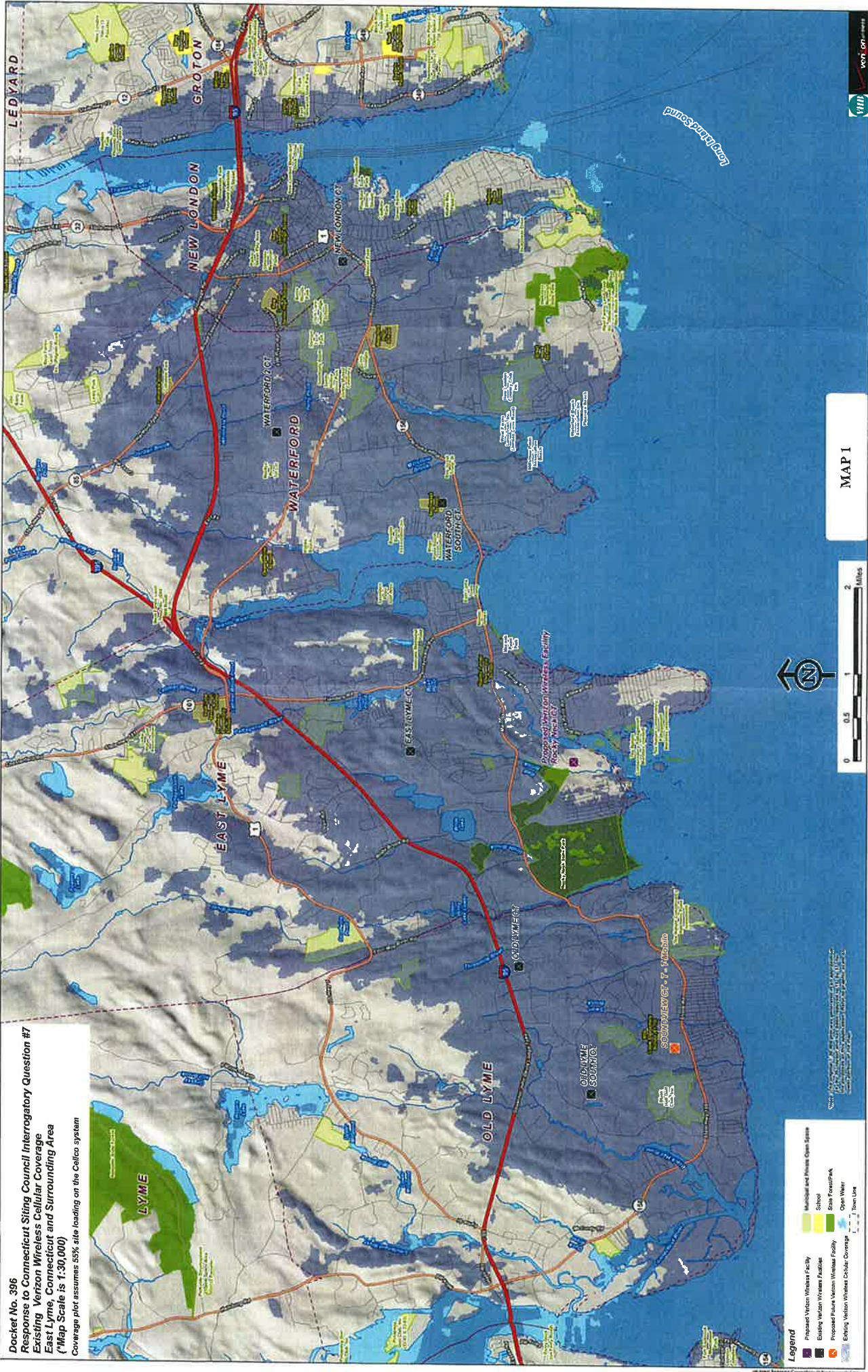


Docket No. 396  
 Response to Connecticut Siting Council Interrogatory Question #7  
 Existing Verizon Wireless Cellular Coverage  
 East Lyme, Connecticut and Surrounding Area  
 (\*Map Scale is 1:30,000)  
 Coverage plot assumes 55% site loading on the Celco system



- Legend**
- Proposed Verizon Wireless Facility
  - Existing Verizon Wireless Facility
  - Proposed Future Verizon Wireless Facility
  - Existing Verizon Wireless Cellular Coverage
  - Municipal and Private Open Space
  - School
  - State Forest/Park
  - Open Water
  - Town Line

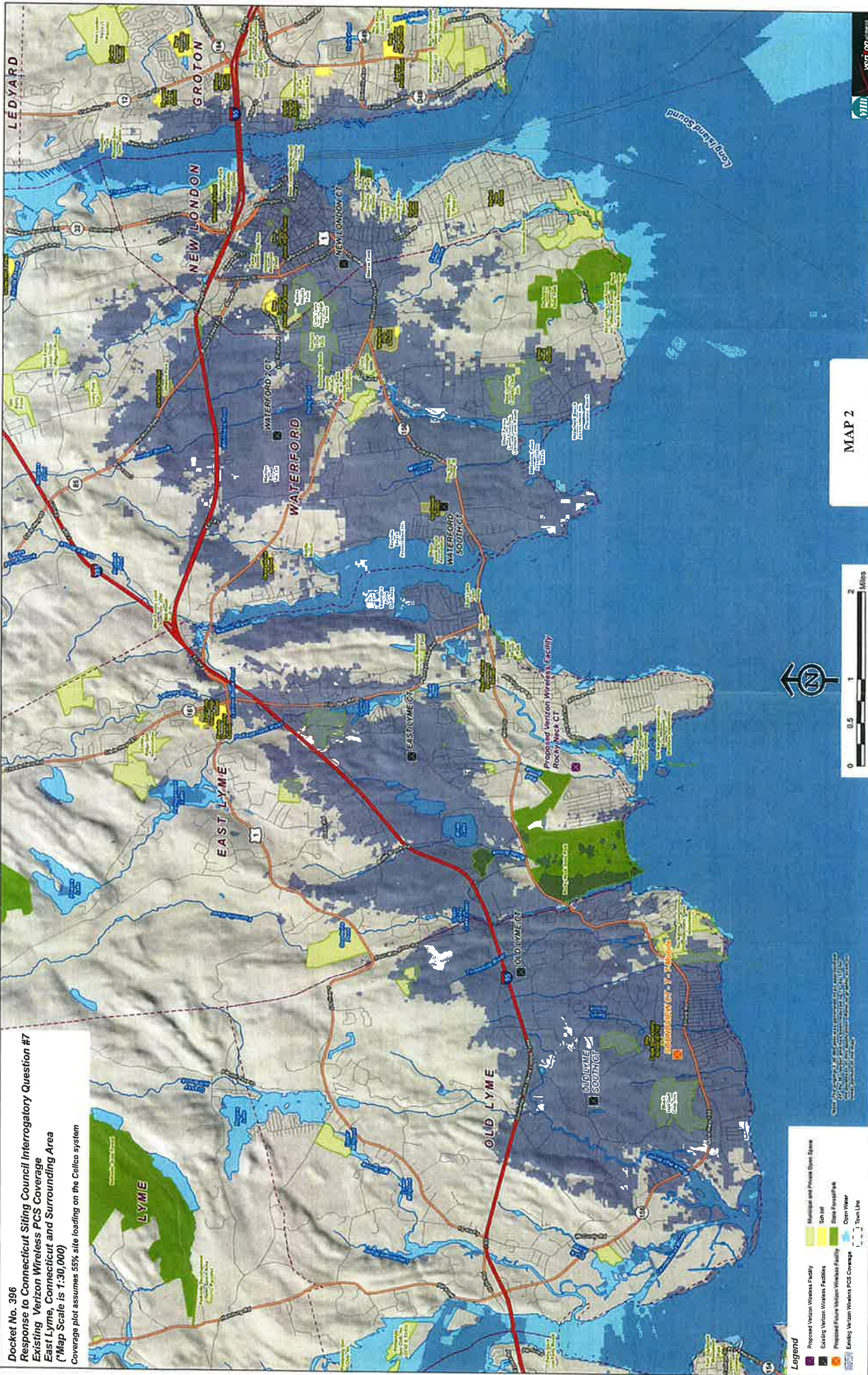


MAP 1





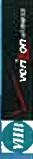
Docket No. 396  
 Response to Connecticut Siting Council Interrogatory Question #7  
 Existing Verizon Wireless PCS Coverage  
 East Lyme, Connecticut and Surrounding Area  
 (\*Map Scale is 1:30,000)  
 Coverage plot assumes 55% site loading on the Calico system



- Legend**
- Proposed Verizon Wireless Facility
  - Existing Verizon Wireless Facilities
  - Proposed Future Verizon Wireless Facility
  - Existing Verizon Wireless PCS Coverage
  - Municipal and Private Open Space
  - 500 ft Buffer
  - State Roadway/Highway
  - Open Water
  - Transit Line

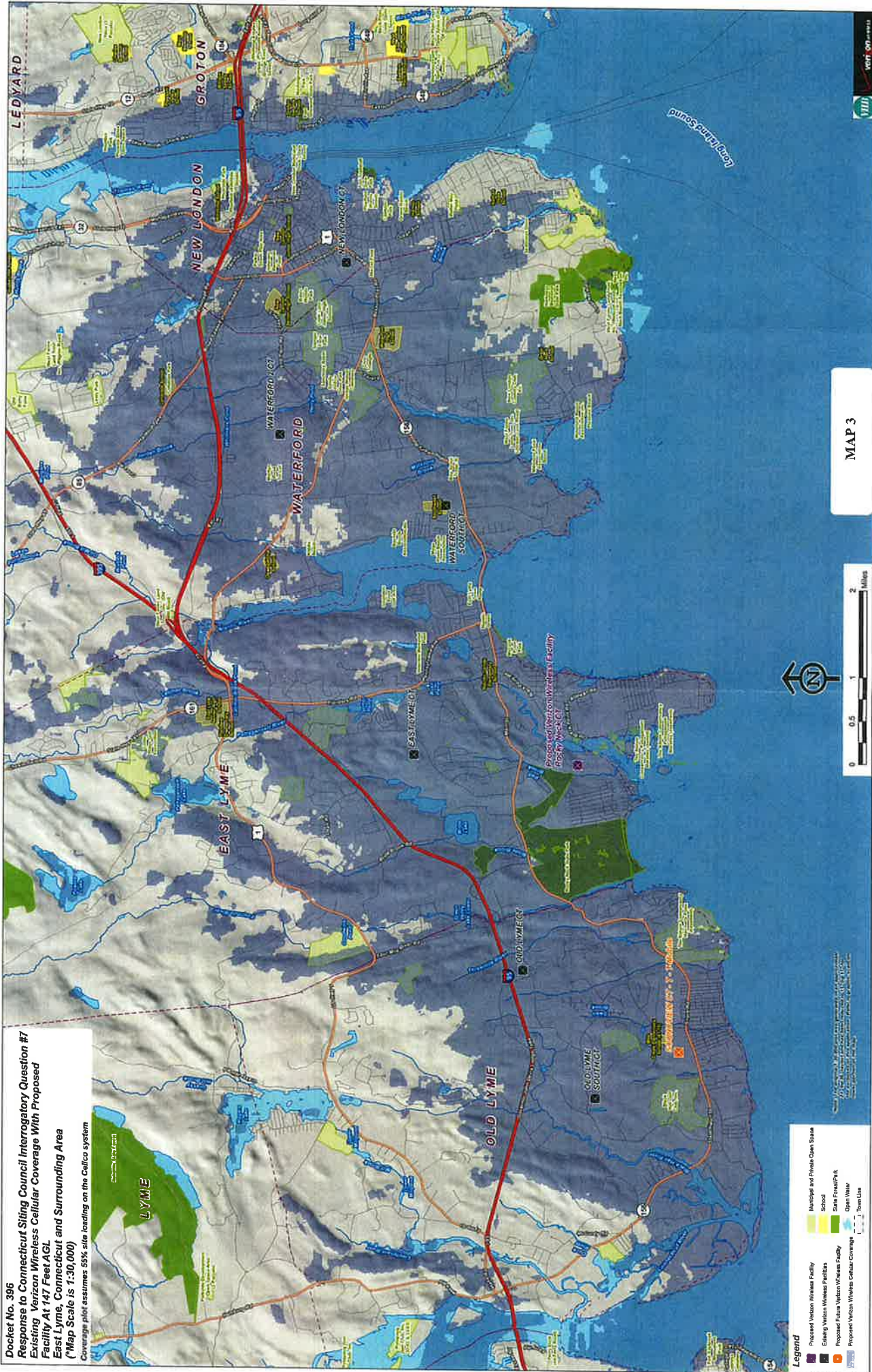


MAP 2





Docket No. 396  
 Response to Connecticut Siting Council Interrogatory Question #7  
 Existing Verizon Wireless Cellular Coverage With Proposed  
 Facility At 147 Feet AGL  
 East Lyme, Connecticut and Surrounding Area  
 (\*Map Scale is 1:30,000)  
 Coverage plot assumes 55% site loading on the Celco system



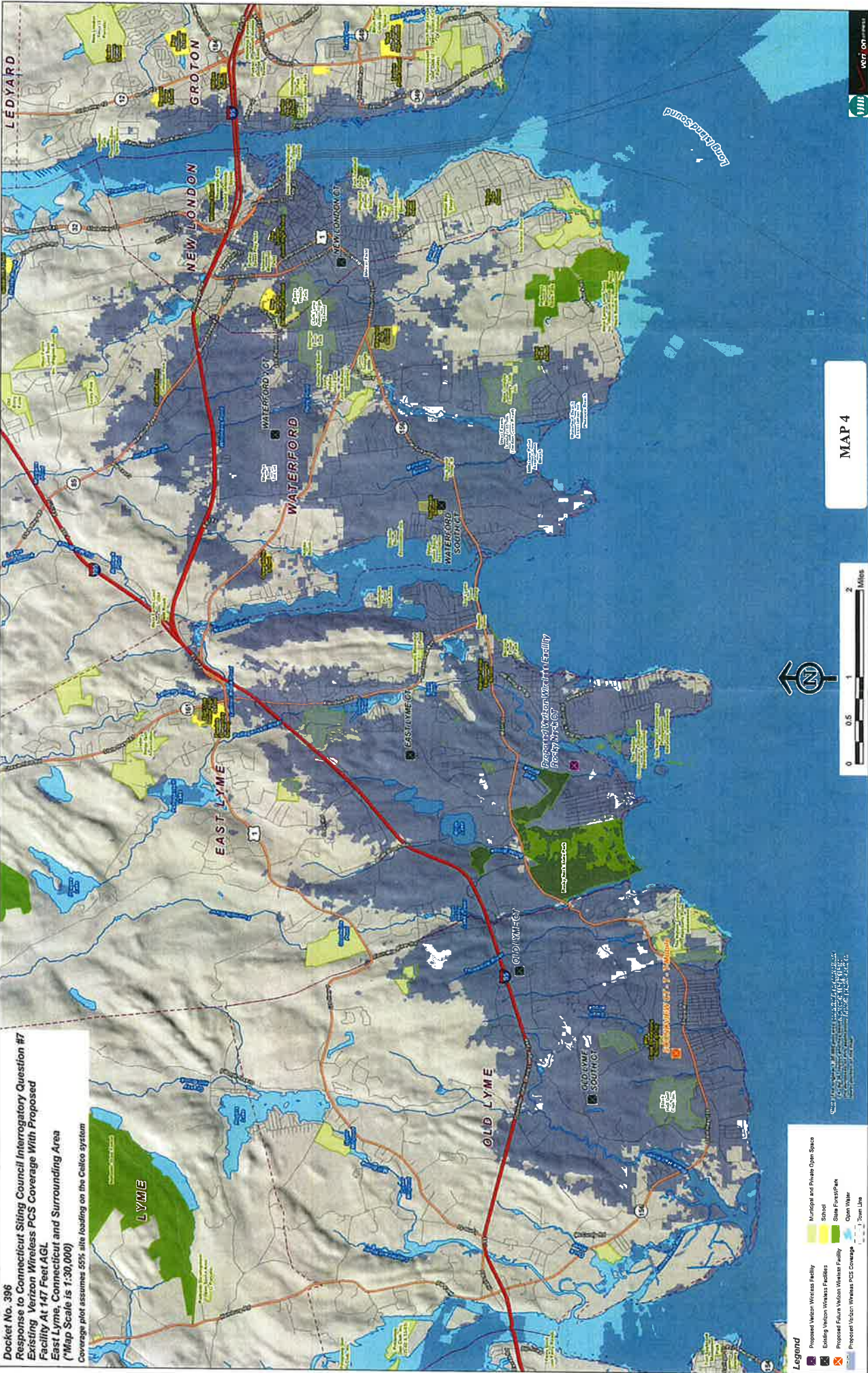
- Legend**
- Proposed Verizon Wireless Facility
  - Existing Verizon Wireless Facility
  - Proposed Future Verizon Wireless Facility
  - Proposed Verizon Wireless Cellular Coverage
  - Municipal and Private Open Space
  - School
  - State Forest/Park
  - Open Water
  - Tram Line

MAP 3





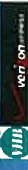
Docket No. 396  
 Response to Connecticut Siting Council Interrogatory Question #7  
 Existing Verizon Wireless PCS Coverage With Proposed  
 Facility At 147 Feet AGL  
 East Lyme, Connecticut and Surrounding Area  
 Coverage plot assumes 55% site loading on the Calco system



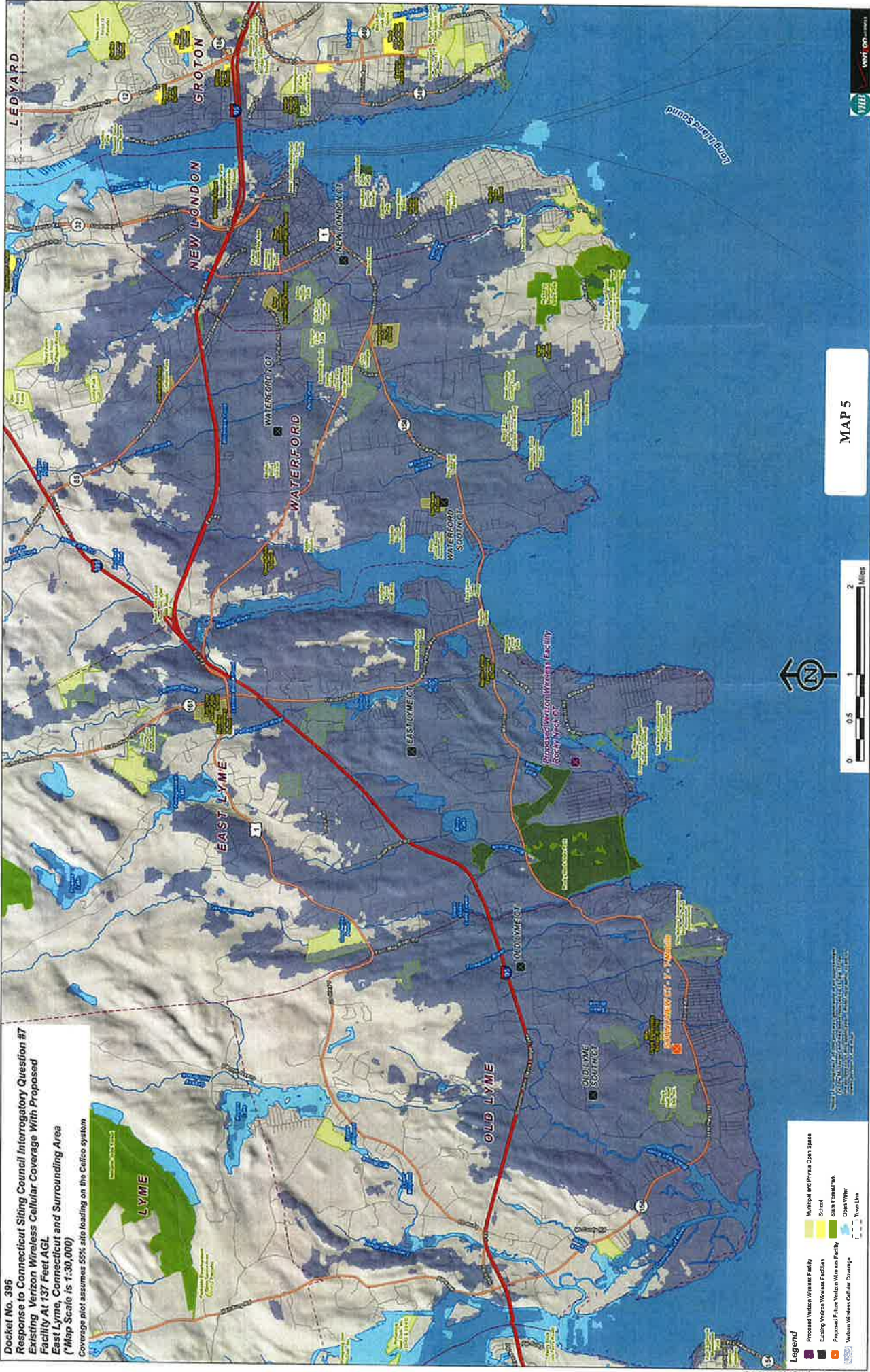
- Legend**
- Proposed Verizon Wireless Facility
  - Existing Verizon Wireless Facilities
  - Proposed Future Verizon Wireless Facility
  - Proposed Verizon Wireless PCS Coverage
  - Municipal and Private Open Space
  - School
  - State Forest/Park
  - Open Water
  - Town Lots



MAP 4







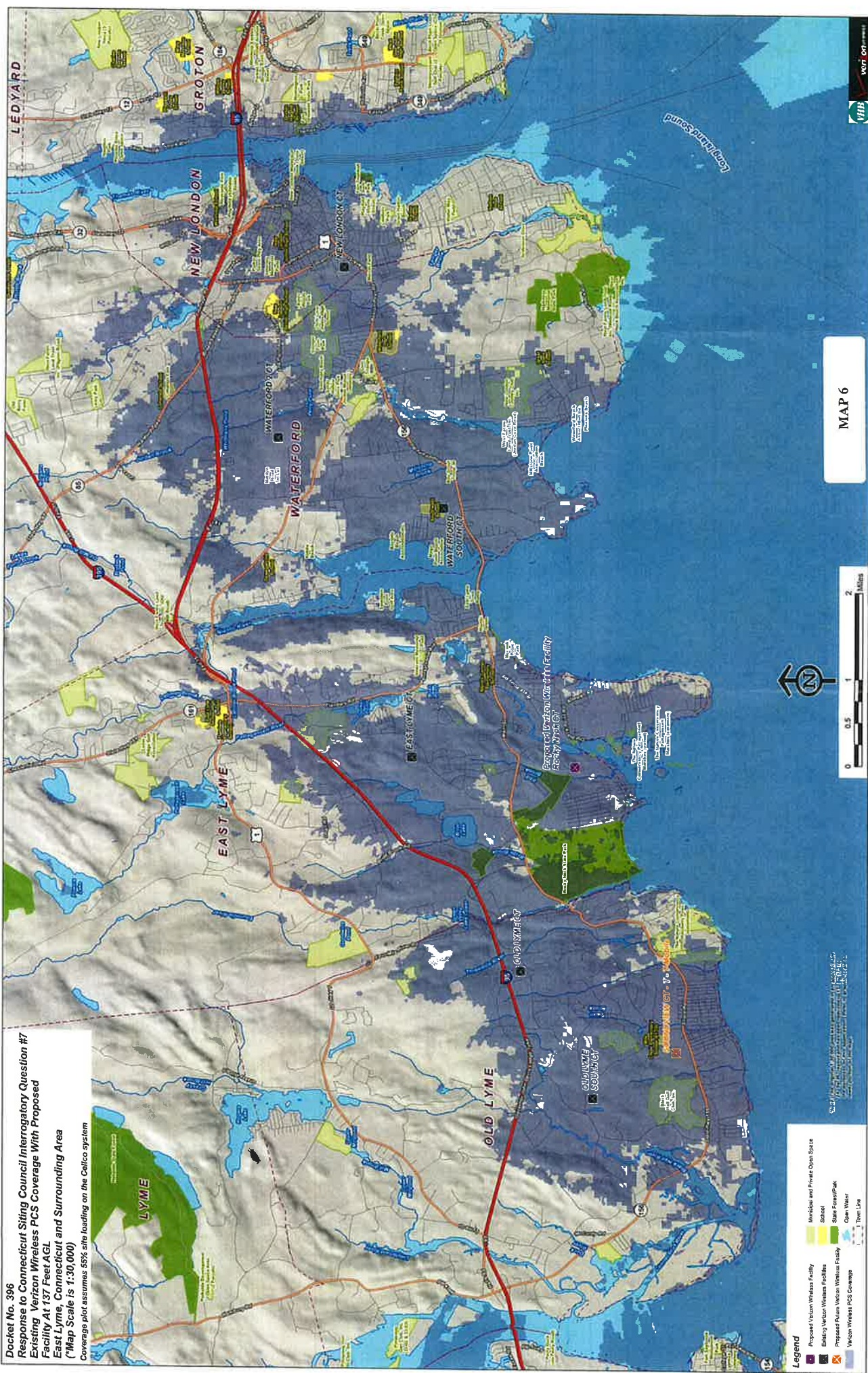
Docket No. 396  
 Response to Connecticut Siting Council Interrogatory Question #7  
 Existing Verizon Wireless Cellular Coverage With Proposed  
 Facility AT-137 Fleet AGI  
 East Lyme, Connecticut and Surrounding Area  
 (Map Scale is 1:30,000)  
 Coverage plot assumes 55% site loading on the Celco system

- Legend**
- Proposed Verizon Wireless Facility
  - Existing Verizon Wireless Facilities
  - Proposed Future Verizon Wireless Facility
  - Verizon Wireless Cellular Coverage
  - Municipal and Private Open Space
  - School
  - State Forest/Park
  - Open Water
  - Town Line

MAP 5







Docket No. 396  
 Response to Connecticut Siting Council Interrogatory Question #7  
 Existing Verizon Wireless PCS Coverage With Proposed  
 Facility At 137 Feet AGL  
 East Lyme, Connecticut and Surrounding Area  
 (\*Map Scale is 1:30,000)  
 Coverage plot assumes 85% site loading on the Celico system

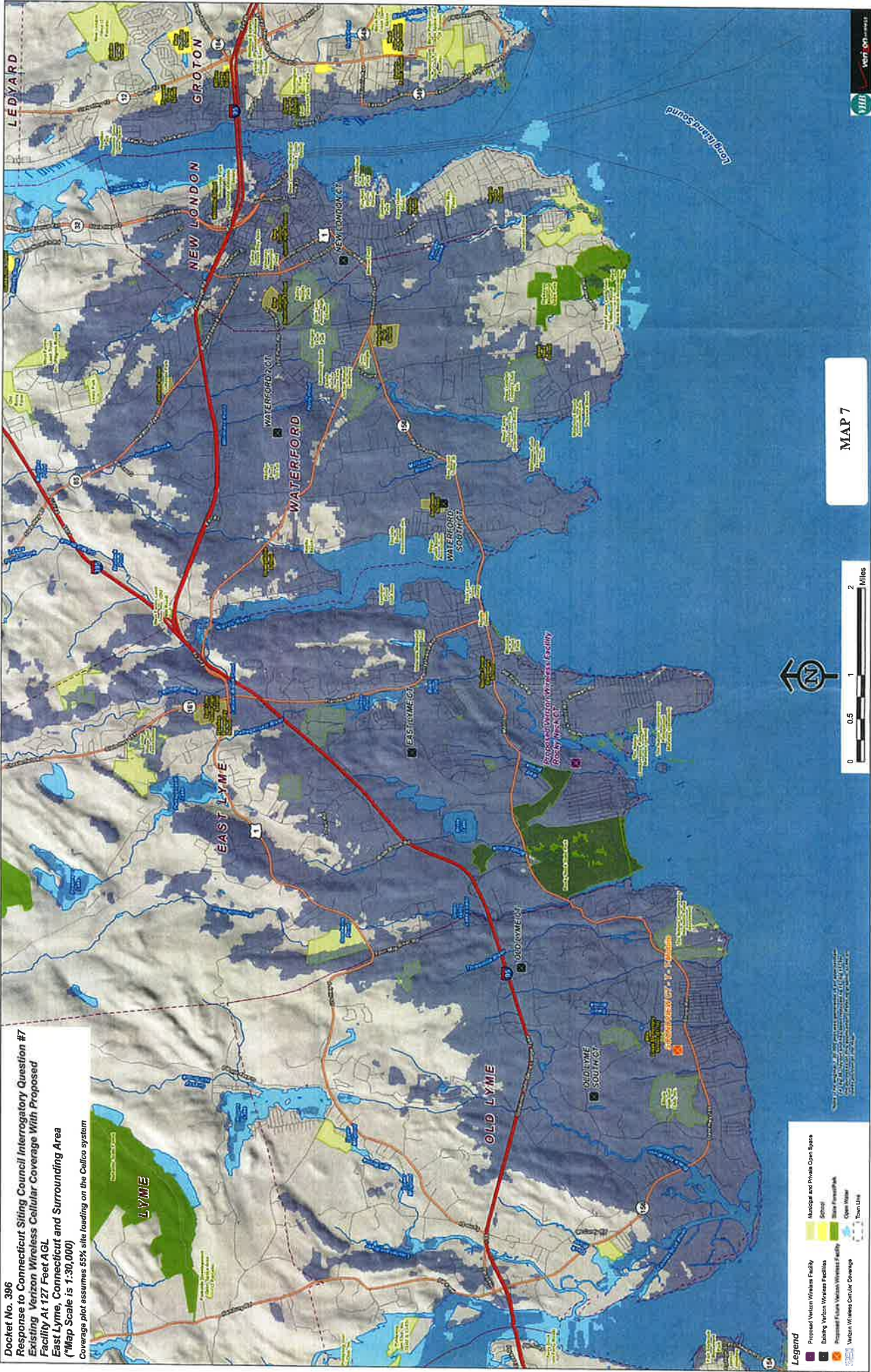
- Legend**
- Proposed Verizon Wireless Facility
  - Existing Verizon Wireless Facilities
  - Proposed Future Verizon Wireless Facility
  - Verizon Wireless PCS Coverage
  - Municipal and Private Open Space
  - School
  - State Forest/Park
  - Open Water
  - Thru Line

MAP 6





Docket No. 396  
 Response to Connecticut Siting Council Interrogatory Question #7  
 Existing Verizon Wireless Cellular Coverage With Proposed  
 Facility A1-127 Feet AGL  
 East Lyme, Connecticut and Surrounding Area  
 (Map Scale is 1:30,000)  
 Coverage plot assumes 65% site loading on the Cellco system



- Legend**
- Proposed Verizon Wireless Facility
  - Existing Verizon Wireless Facility
  - Proposed Future Verizon Wireless Facility
  - Verizon Wireless Cellular Coverage
  - Municipal and Private Open Space
  - School
  - State Forest/Park
  - Open Water
  - Town Line

MAP 7





