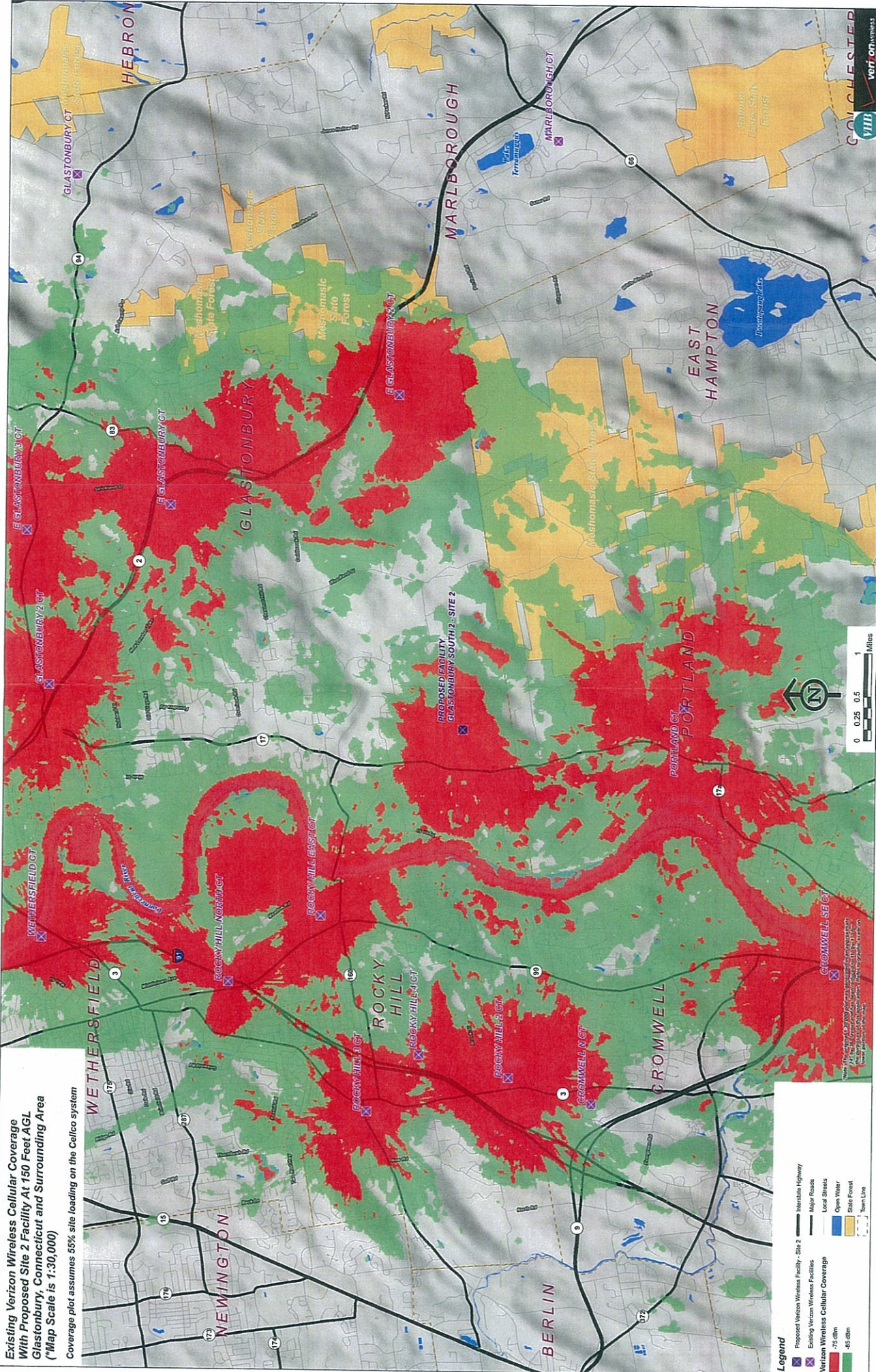


TAB 6

Existing Verizon Wireless Cellular Coverage
 With Proposed Site 2 Facility At 150 Feet AGL
 Glastonbury, Connecticut and Surrounding Area
 ("Map Scale is 1:30,000)
 Coverage plot assumes 55% site loading on the Celco system



Legend

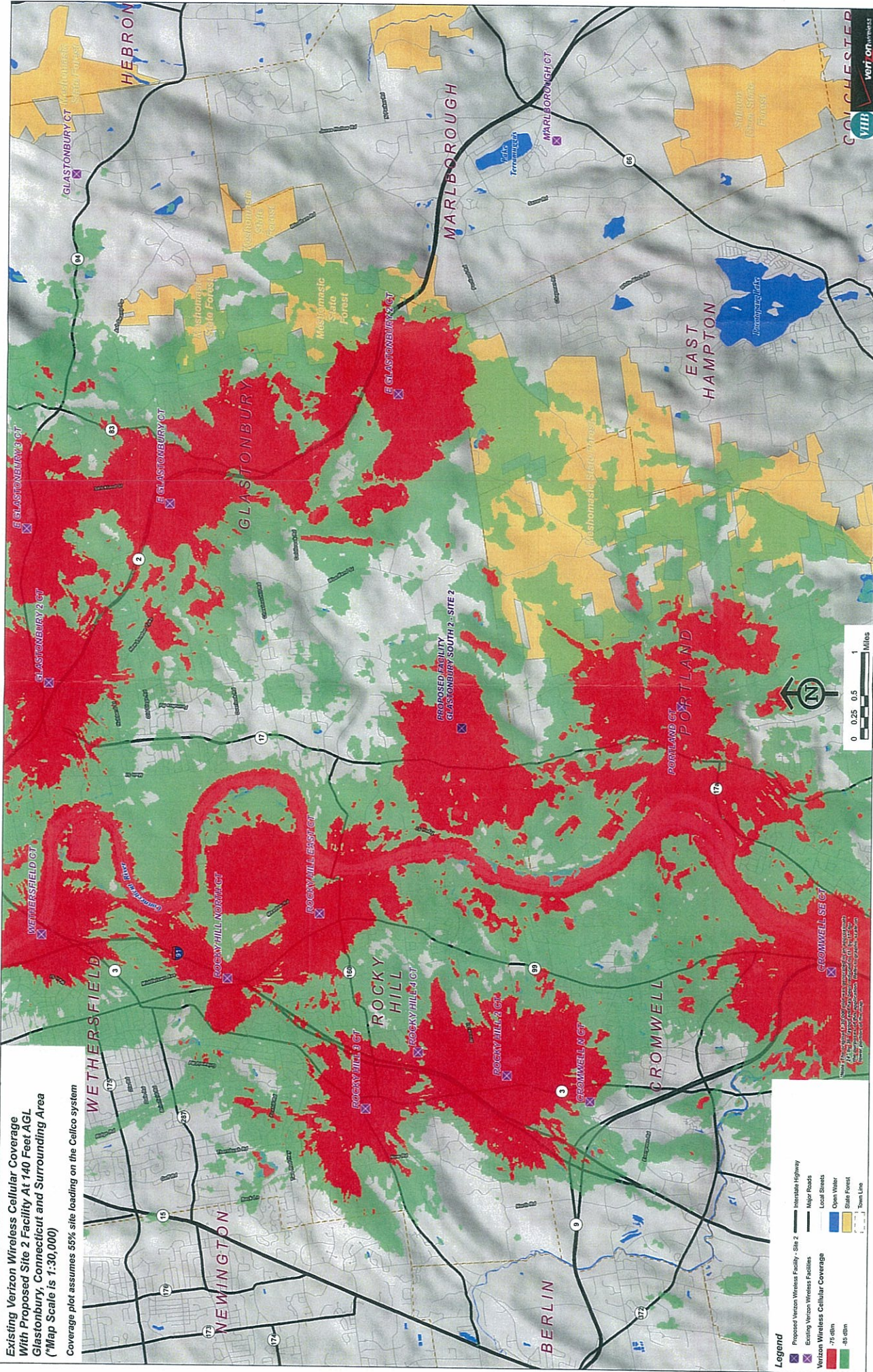
- Proposed Verizon Wireless Facility - Site 2
- Existing Verizon Wireless Facilities
- Verizon Wireless Cellular Coverage
- 75 dBm
- 85 dBm
- 95 dBm
- Interstate Highway
- Major Roads
- Local Streets
- Open Water
- State Forest
- Town Line



Copyright © 2008 Verizon Wireless. All rights reserved. This map is for informational purposes only. It is not intended to be used for any other purpose. The information on this map is subject to change without notice. The information on this map is not a guarantee of service. Service is subject to change without notice. The information on this map is not a guarantee of service. Service is subject to change without notice.

**Existing Verizon Wireless Cellular Coverage
With Proposed Site 2 Facility At 140 Feet AGL
Glastonbury, Connecticut and Surrounding Area
(*Map Scale is 1:30,000)**

Coverage plot assumes 55% site loading on the Celco system



Legend

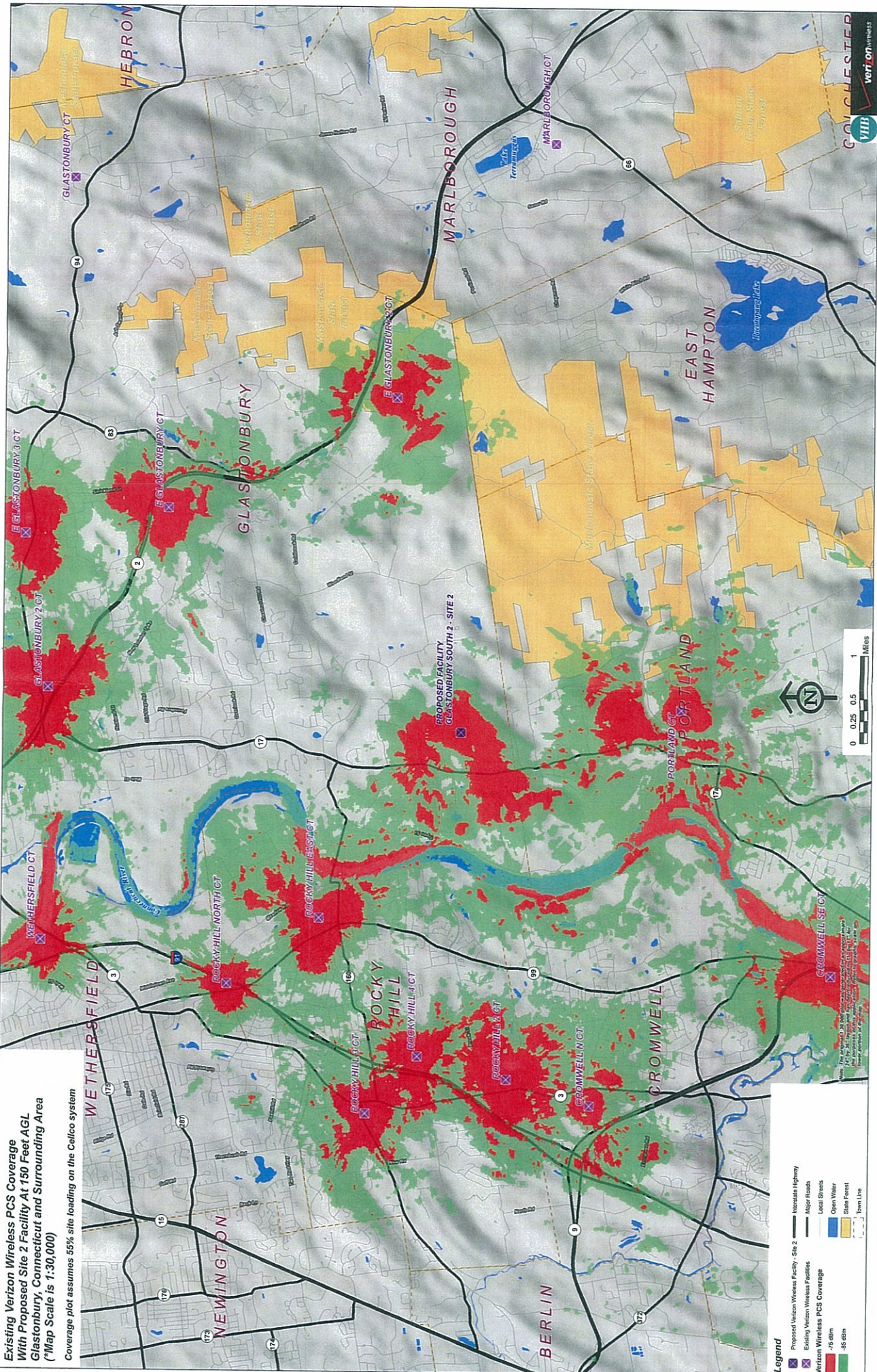
- Proposed Verizon Wireless Facility - Site 2
- Interstate Highway
- Major Roads
- Local Streets
- Verizon Wireless Cellular Coverage
- 75 dBm
- 45 dBm
- Open Water
- State Forest
- Town Line



© 2008 Verizon Wireless. All rights reserved. Coverage shown is based on current data and is not a guarantee of service. Coverage is subject to change without notice.

Existing Verizon Wireless PCS Coverage
 With Proposed Site 2 Facility At 150 Feet AGL
 Glastonbury, Connecticut and Surrounding Area
 (*Map Scale is 1:30,000)

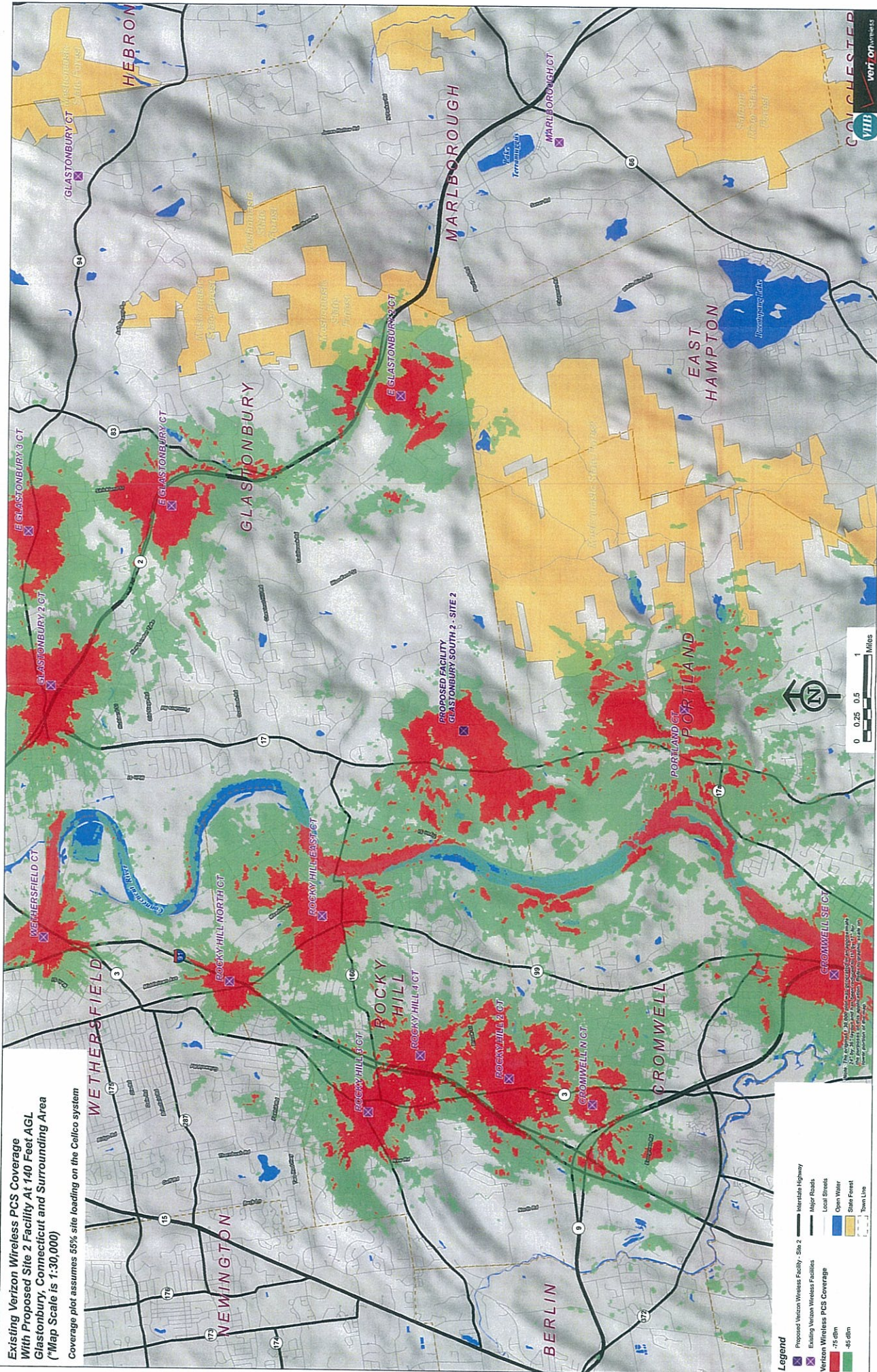
Coverage plot assumes 55% site loading on the Cellico system



Legend

- Proposed Verizon Wireless Facility - Site 2
- Existing Verizon Wireless Facilities
- Verizon Wireless PCS Coverage
- 75 dBm
- 45 dBm
- Interstate Highway
- Major Roads
- Local Streets
- Open Water
- State Forest
- Town Line





Existing Verizon Wireless PCS Coverage
 With Proposed Site 2 Facility At 140 Feet AGL
 Glastonbury, Connecticut and Surrounding Area
 (*Map Scale is 1:30,000)

Coverage plot assumes 55% site loading on the Celco system

Legend

- Proposed Verizon Wireless Facility - Site 2
- Existing Verizon Wireless Facilities
- Verizon Wireless PCS Coverage
- 75 dBm
- 85 dBm
- Interstate Highway
- Major Roads
- Local Roads
- Open Water
- State Forest
- Town Line

Scale: 0 0.25 0.5 1 Miles

North Arrow



Map Date: 12/14/11
 Map Scale: 1:30,000
 Map Projection: NAD 83
 Data Source: Verizon Wireless