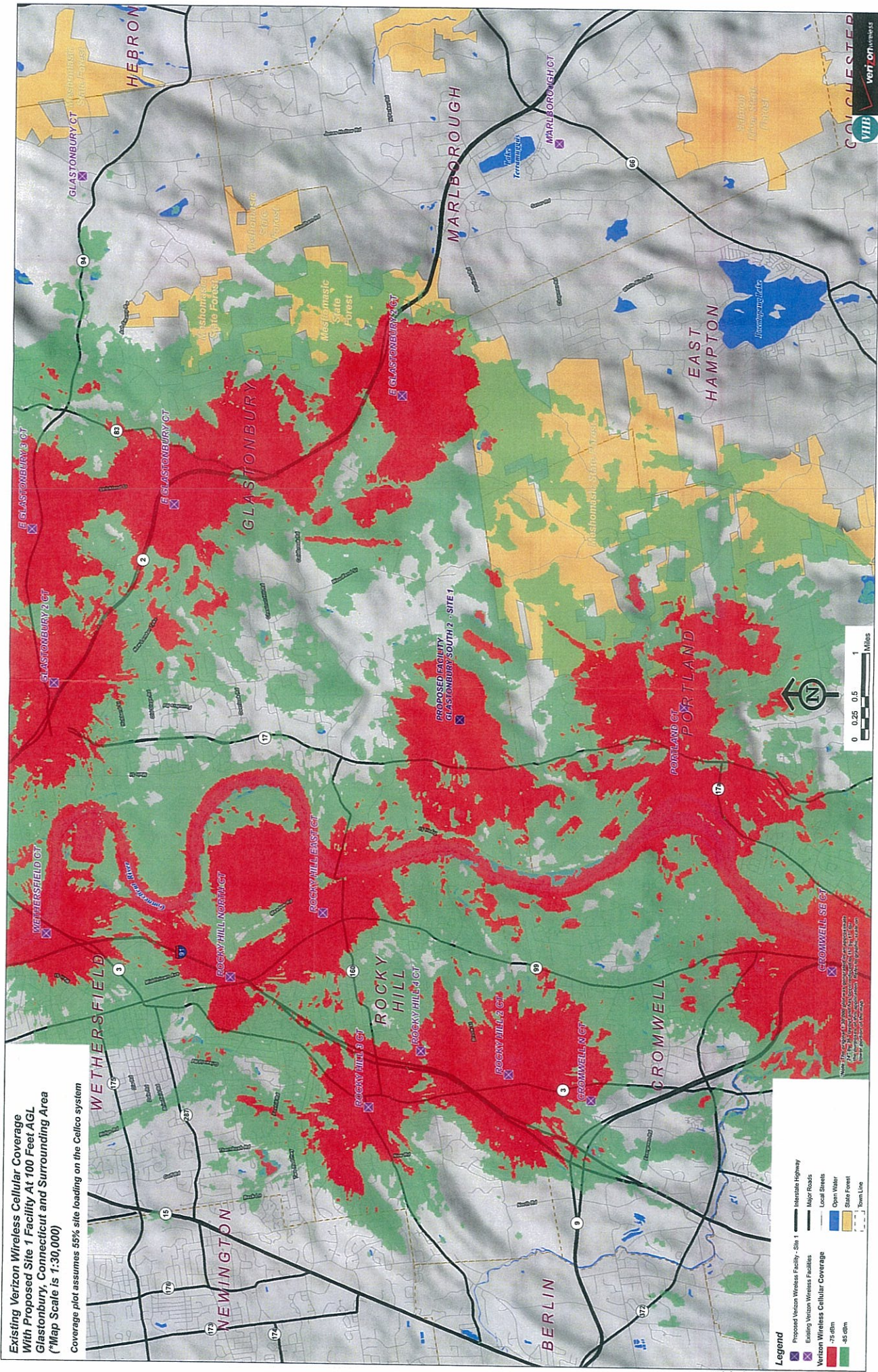


TAB 5



Existing Verizon Wireless Cellular Coverage With Proposed Site 1 Facility At 700 Feet AGL Glastonbury, Connecticut and Surrounding Area
 (*Map Scale is 1:30,000)

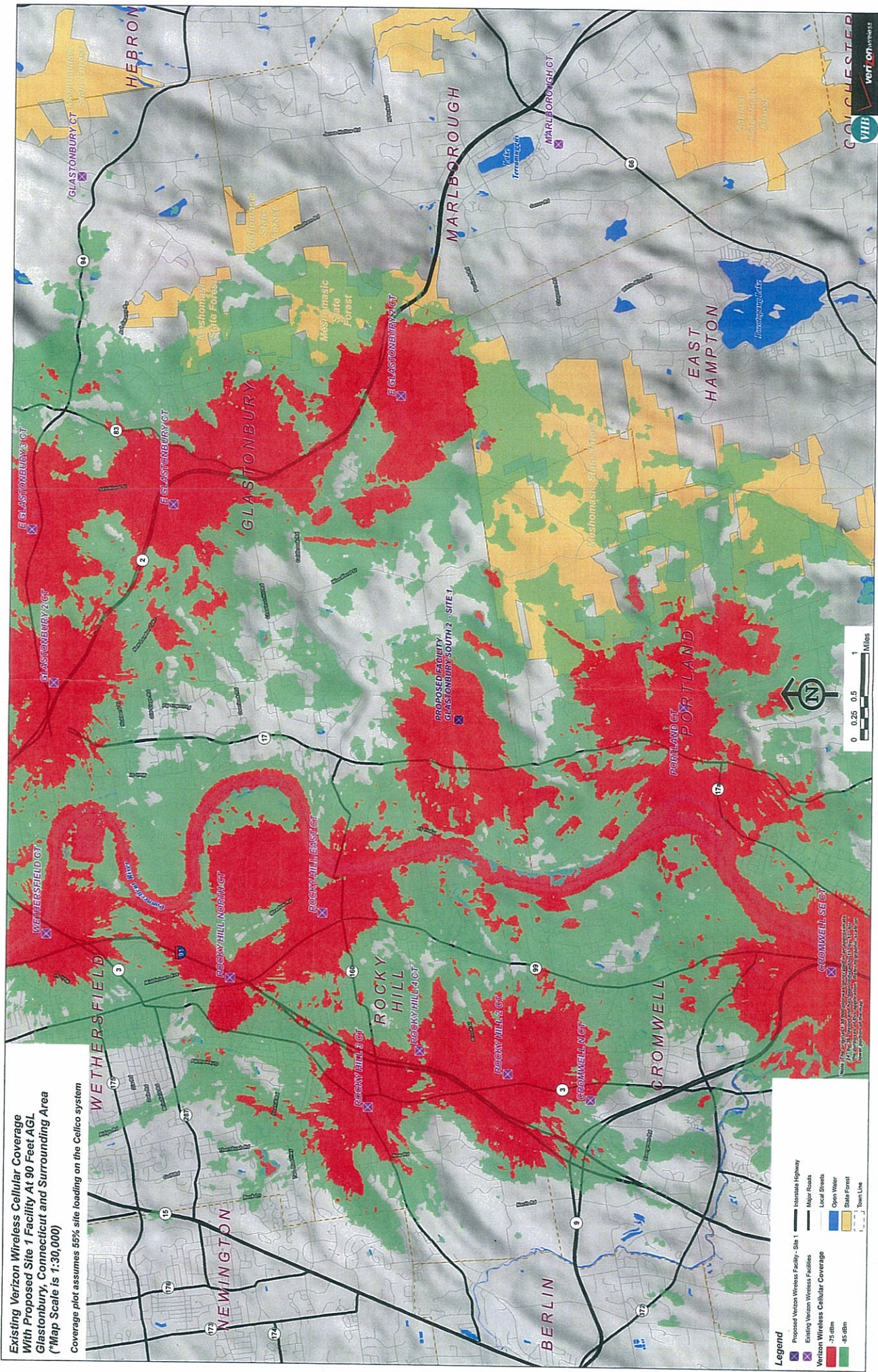
Coverage plot assumes 55% site loading on the Celco system

Legend

- Proposed Verizon Wireless Facility - Site 1
- Existing Verizon Wireless Facilities
- Verizon Wireless Cellular Coverage
 - 75 dBm
 - 85 dBm
- Interstate Highway
- Major Road
- Local Street
- Open Water
- State Forest
- Town Line



Small text at the bottom right corner of the map area.



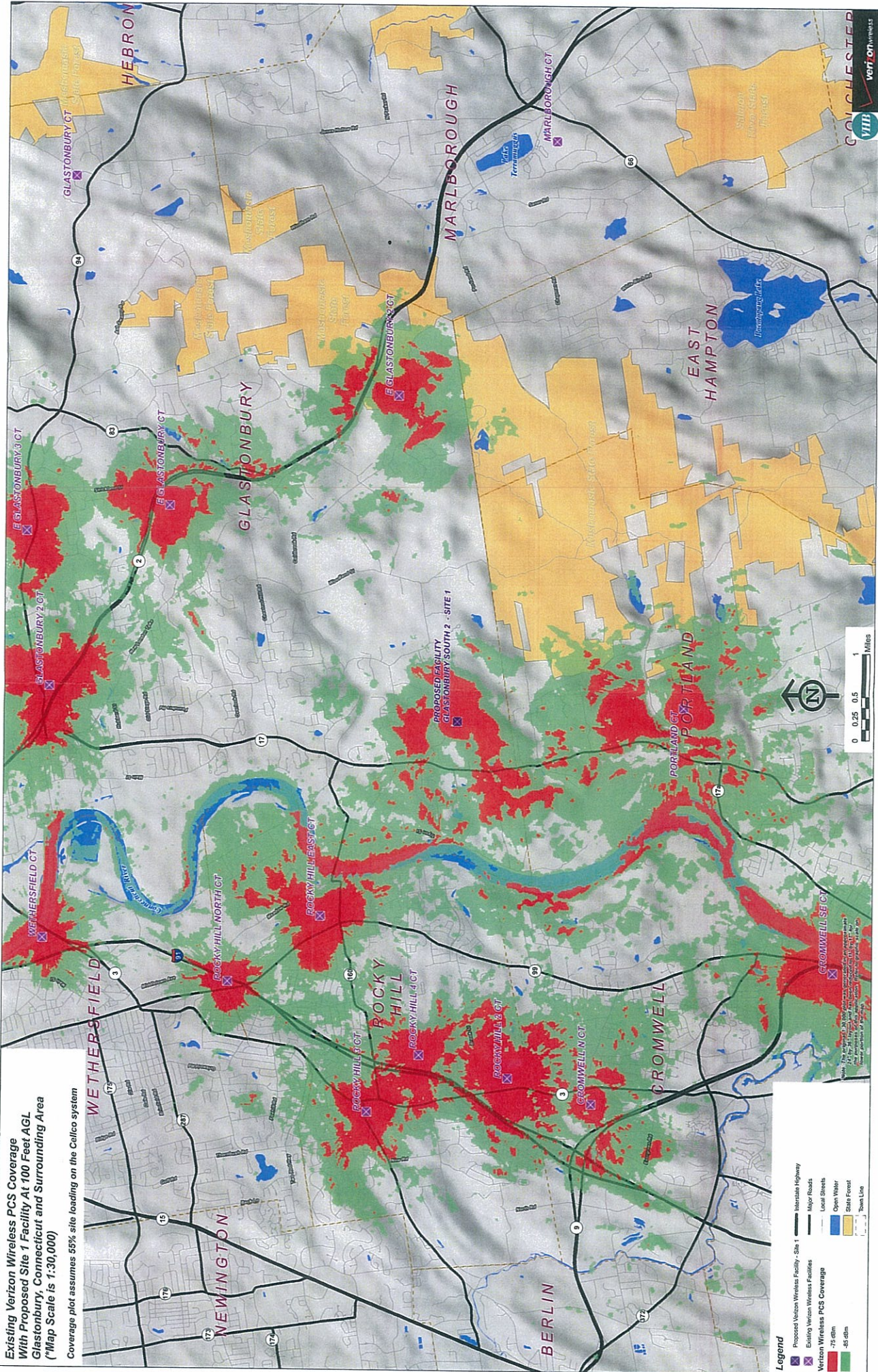
Existing Verizon Wireless Cellular Coverage
 With Proposed Site 1 Facility At 90 Feet AGL
 Glastonbury, Connecticut and Surrounding Area
 (*Map Scale is 1:30,000)

Coverage plot assumes 55% site loading on the Celco system

- Legend**
- Proposed Verizon Wireless Facility - Site 1
 - Existing Verizon Wireless Facilities
 - Verizon Wireless Cellular Coverage
 - 75 dBm
 - 85 dBm
 - Interstate Highway
 - Major Road
 - Local Street
 - Open Water
 - State Forest
 - Town Line



Map prepared by the Connecticut State Office of Planning and Economic Development, 2010. All rights reserved. No part of this map may be reproduced without the prior written permission of the State of Connecticut.



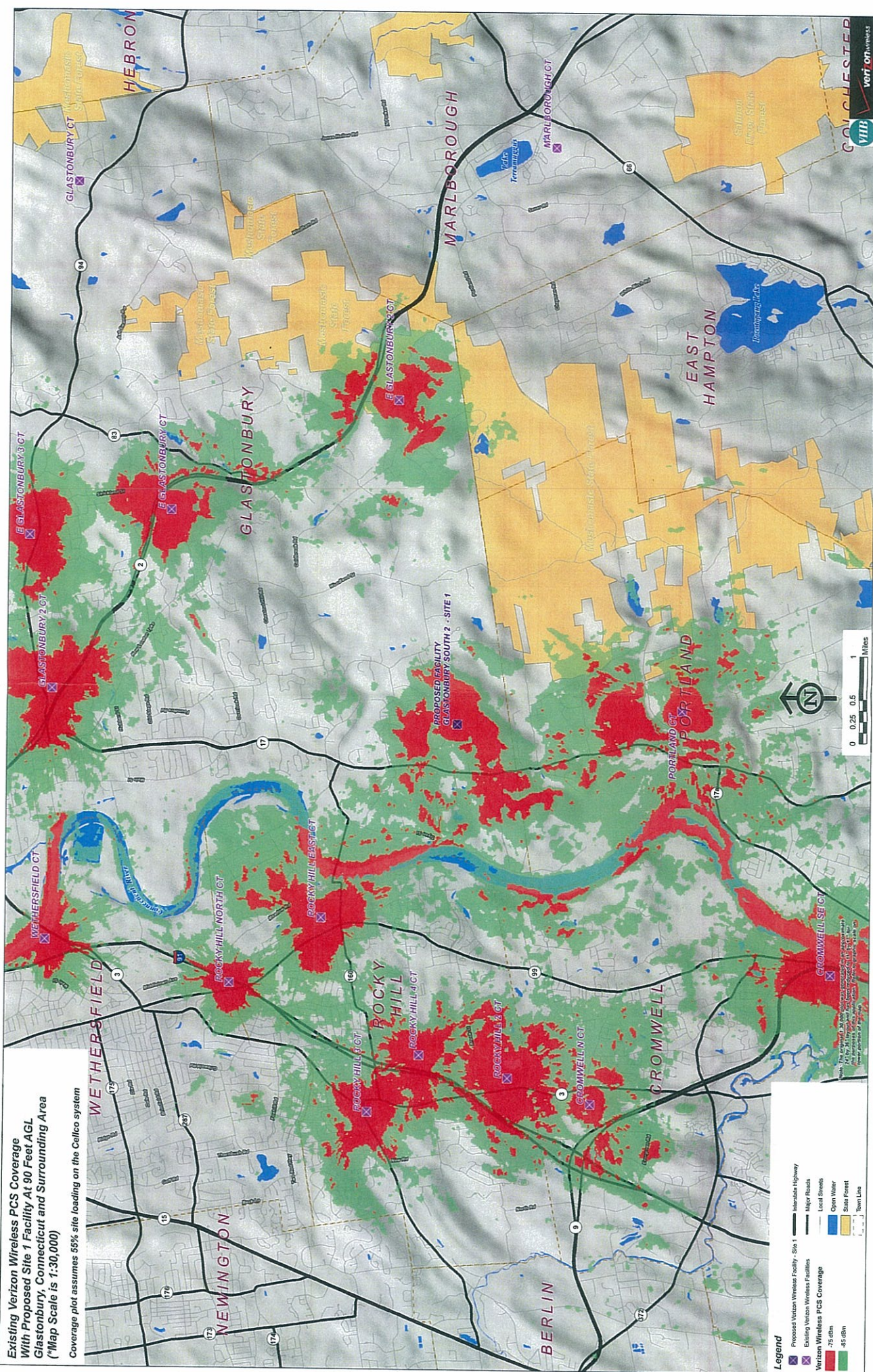
Existing Verizon Wireless PCS Coverage
 With Proposed Site 1 Facility At 700 Feet AGL
 Glastonbury, Connecticut and Surrounding Area
 (*Map Scale is 1:30,000)

Coverage plot assumes 55% site loading on the Celco system

- Legend**
- Proposed Verizon Wireless Facility - Site 1
 - Existing Verizon Wireless Facilities
 - Verizon Wireless PCS Coverage
 - 75 dBm
 - 85 dBm
 - Interstate Highway
 - Major Roads
 - Local Streets
 - Open Water
 - State Forest
 - Town Line



Map Date: 11/13/13
 Map Title: Verizon Wireless PCS Coverage - Glastonbury, Connecticut and Surrounding Area
 Map Scale: 1:30,000
 Map Author: Verizon Wireless



Existing Verizon Wireless PCS Coverage
 With Proposed Site 1 Facility At 90 Feet AGL
 Glastonbury, Connecticut and Surrounding Area
 (*Map Scale is 1:30,000)

Coverage plot assumes 55% site loading on the Celco system

Legend

- Proposed Verizon Wireless Facility - Site 1
- Existing Verizon Wireless Facilities
- Verizon Wireless PCS Coverage
 - 75 dBm
 - 85 dBm
- Interstate Highway
- Major Road
- Local Streets
- Open Water
- State Forest
- Stream Line

