

---

# Attachment A

## Study Area Map, Photographic Documentation of the Proposed Project Area, Balloon Float Photographs, and Photographic Simulations



J:\1479.30\graphics\FIGURES\1479.30\_Photos.mxd

PROPOSED PROJECT AREA

# Photolog Map





PHOTO TAKEN FROM OLD MAIDS LANE ADJACENT TO HOUSE #199, LOOKING NORTHEAST

DISTANCE FROM THE PHOTOGRAPH LOCATION TO SITE IS 1.13 MILES +/-

View 1

Monopine at 117'

# Photographic Simulation



J:\4179.30\graphics\FIGURES\4179.30\_PhotoSim.mxd

**PHOTO TAKEN FROM OLD MAIDS LANE ADJACENT TO HOUSE #199, LOOKING NORTHEAST**  
DISTANCE FROM THE PHOTOGRAPH LOCATION TO SITE IS 1.13 MILES +/-



PHOTO TAKEN FROM OLD MAIDS LANE ADJACENT TO HOUSE #112, LOOKING NORTHEAST  
DISTANCE FROM THE PHOTOGRAPH LOCATION TO SITE IS 0.94 MILE +/-

View 2

Monopine at 117'

# Photographic Simulation



J:\41479.30\graphics\FIGURES\41479.30\_PhotoSim.indd

PHOTO TAKEN FROM OLD MAIDS LANE ADJACENT TO HOUSE #112, LOOKING NORTHEAST

DISTANCE FROM THE PHOTOGRAPH LOCATION TO SITE IS 0.94 MILE +/-



PHOTO TAKEN FROM BLUFF POINT ROAD ADJACENT TO HOUSE #131, LOOKING SOUTHEAST  
DISTANCE FROM THE PHOTOGRAPH LOCATION TO SITE IS 1.26 MILES +/-

J:\41479.30\graphics\FIGURES\41479.30\_Photos.mxd



View 3

Monopine at 117'

# Photographic Simulation



PHOTO TAKEN FROM BLUFF POINT ROAD ADJACENT TO HOUSE #131, LOOKING SOUTHEAST  
DISTANCE FROM THE PHOTOGRAPH LOCATION TO SITE IS 1.26 MILES +/-



J:\41479.30\graphics\FIGURES\41479.30\_Photos.mxd

**PHOTO TAKEN FROM BLUFF POINT ROAD ADJACENT TO HOUSE #172, LOOKING SOUTHEAST**  
DISTANCE FROM THE PHOTOGRAPH LOCATION TO SITE IS 1.24 MILES +/-

View 4

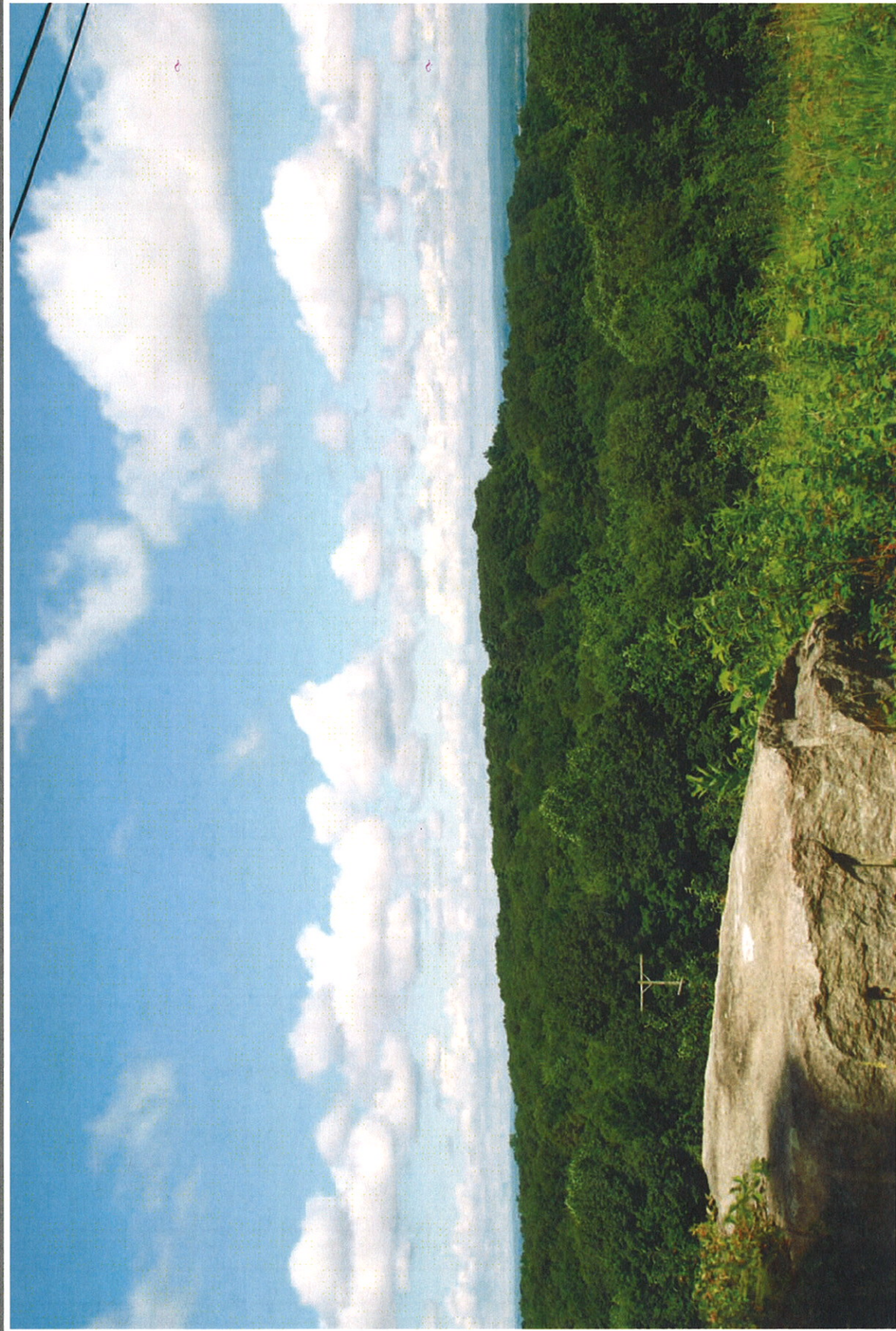
Monopine at 117'

# Photographic Simulation



PHOTO TAKEN FROM BLUFF POINT ROAD ADJACENT TO HOUSE #172, LOOKING SOUTHEAST  
DISTANCE FROM THE PHOTOGRAPH LOCATION TO SITE IS 1.24 MILES +/-

J:\41479.30\graphics\FIGURES\41479.30\_Photosim.mxd



J:\1479.30\graphics\FIGURES\1479.30\_Photos.mxd

**PHOTO TAKEN FROM BELLTOWN ROAD ADJACENT TO HOUSE #168, LOOKING WEST/NORTHWEST - BALLOON IS NOT VISIBLE**  
DISTANCE FROM THE PHOTOGRAPH LOCATION TO SITE IS 0.97 MILE +/-



J:\41479.30\graphics\FIGURES\41479\_30\_Photo6.mxd

**PHOTO TAKEN FROM CRYSTAL RIDGE ADJACENT TO HOUSE #73, LOOKING NORTHWEST - BALLOON IS NOT VISIBLE**  
DISTANCE FROM THE PHOTOGRAPH LOCATION TO SITE IS 1.62 MILES +/-



J:\41479.30\graphics\FIGURES\41479\_30\_Photos.mxd

PHOTO TAKEN FROM TAYLOR TOWN ROAD SOUTH OF BLUFF POINT ROAD, LOOKING SOUTHEAST - BALLOON IS NOT VISIBLE  
DISTANCE FROM THE PHOTOGRAPH LOCATION TO SITE IS 1.08 MILES +/-



PHOTO TAKEN FROM GREAT POND ROAD ADJACENT TO HOUSE #293, LOOKING SOUTHWEST - BALLOON IS NOT VISIBLE  
DISTANCE FROM THE PHOTOGRAPH LOCATION TO SITE IS 0.96 MILE +/-

J:\41479\_30\graphics\FIGURES\41479\_30\_Photos\m.indd



PHOTO TAKEN FROM MAIN STREET ACROSS FROM THE WELLS-SHIPMAN-WARD HOUSE, LOOKING SOUTHEAST  
- BALLOON IS NOT VISIBLE  
DISTANCE FROM THE PHOTOGRAPH LOCATION TO SITE IS 1.65 MILES +/-

J:\41479.30\graphics\FIGURES\41479.30\_Photos\m.indd





J:\4179.30\graphics\FIGURES\4179\_30 Photo.mxd

PHOTO TAKEN FROM GLASTONBURY HUNT LANE ADJACENT TO HOUSE #44, LOOKING NORTHEAST - BALLOON IS NOT VISIBLE  
DISTANCE FROM THE PHOTOGRAPH LOCATION TO SITE IS 0.93 MILE +/-



J:\41479.30\graphics\FIGURES\41479\_30\_Photos.mxd

**PHOTO TAKEN FROM DAYTON ROAD AT EXISTING NATURAL GAS RIGHT-OF-WAY, LOOKING SOUTHWEST - BALLOON IS NOT VISIBLE**  
DISTANCE FROM THE PHOTOGRAPH LOCATION TO SITE IS 0.10 MILE +/-



J:\41479.30\graphics\FIGURES\41479\_30\_Photos\mndd

**PHOTO TAKEN FROM MAIN STREET, LOOKING SOUTHEAST - BALLOON IS NOT VISIBLE**  
DISTANCE FROM THE PHOTOGRAPH LOCATION TO SITE IS 1.51 MILES +/-



J:\41479\_30\graphics\FIGURES\41479\_30\_Photos.mxd

**PHOTO TAKEN FROM GREAT POND ROAD AT ROUTE #17, LOOKING SOUTHEAST - BALLOON IS NOT VISIBLE**  
DISTANCE FROM THE PHOTOGRAPH LOCATION TO SITE IS 0.56 MILE +/-



J:\41479.30\graphics\FIGURES\1479\_30\_Photos.mxd

PHOTO TAKEN FROM OVERLOOK COURT AT ROUTE 17, LOOKING NORTHEAST - BALLOON IS NOT VISIBLE  
DISTANCE FROM THE PHOTOGRAPH LOCATION TO SITE IS 1.55 MILE +/-

---

# Attachment B

## Viewshed Map

Viewshed Analysis  
Proposed Verizon Wireless  
Telecommunications Facility  
Glastonbury South 2  
271 Dayton Road  
Glastonbury, Connecticut

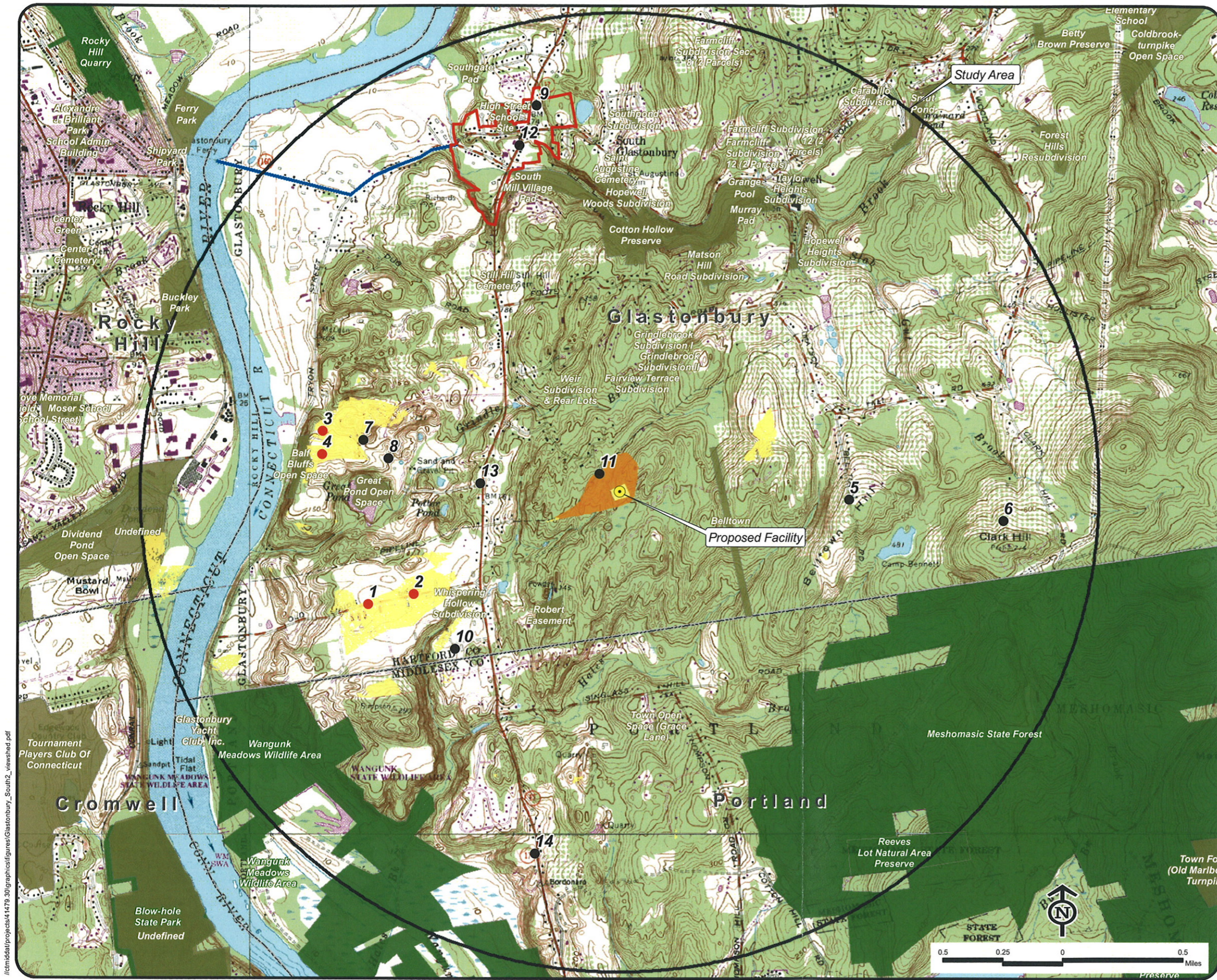
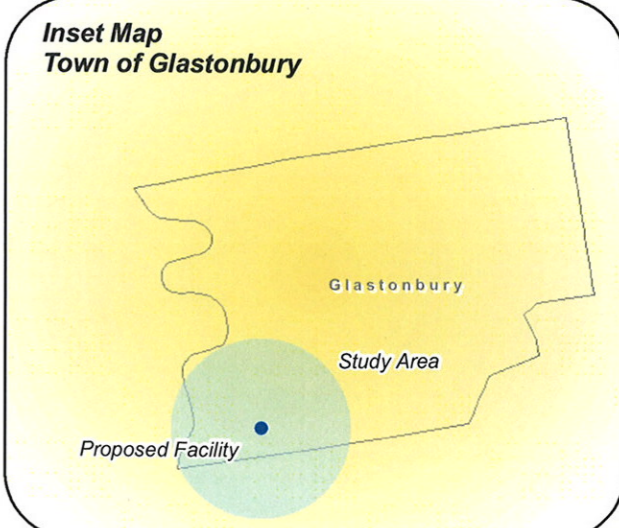
NOTE:  
 - Viewshed analysis conducted using ESRI's Spatial Analyst.  
 - Proposed Facility height is 117 feet.  
 - Existing tree canopy height estimated at 65 feet.  
 - Study Area is comprised of a two-mile radius surrounding the proposed facility and includes 8,042 acres of land.

DATA SOURCES:  
 - Digital elevation model (DEM) derived from Connecticut LIDAR-based Digital Elevation Data (collected in 2000) with a 10-foot spatial resolution produced by the University of Connecticut and the Center for Land Use Education and Research (CLEAR); 2007  
 - Forest areas derived from 2006 digital orthophotos with 1-foot pixel resolution; digitized by VHB, 2009  
 - Base map comprised of Glastonbury (1992) and Middle Haddam (1984) USGS Quadrangle Maps  
 - Protected municipal and private open space properties and federal protected properties and data layers provided by CT DEP, 1997  
 - Protected CT DEP properties data layer provided by CTDEP, May 2007  
 - CT DEP boat launches data layer provided by CT DEP, 1994  
 - Scenic Roads layer derived from available State and Local listings.

Map Compiled August, 2009

**Legend**

- |  |                                     |
|--|-------------------------------------|
| Proposed Monopine Location                                   | CT DEP Protected Properties (2007)  |
| Photographs - July 8, 2009                                   | State Forest                        |
| Balloon is not visible                                       | State Park                          |
| Balloon visible above trees                                  | DEP Owned Waterbody                 |
| Seasonal Visibility (Approximately 15 acres)                 | State Park Scenic Reserve           |
| Year-Round Visibility (Approximately 140 acres)              | Historic Preserve                   |
| Protected Municipal and Private Open Space Properties (1997) | Natural Area Preserve               |
| Cemetery   | Fish Hatchery                       |
| Preservation   | Flood Control                       |
| Conservation   | Other                               |
| Existing Preserved Open Space                                | State Park Trail                    |
| Recreation   | Water Access                        |
| General Recreation   | Wildlife Area                       |
| School   | Wildlife Sanctuary                  |
| Uncategorized  | Federal Protected Properties (1997) |
|  | South Glastonbury Historic District |
|  | CT DEP Boat Launches (1994)         |
|  | Scenic Road (State and Local)       |
|  | Town Line                           |



/c:\mtdat\projects\41479\_30\graphics\figures\Glastonbury\_South2\_viewshed.pdf