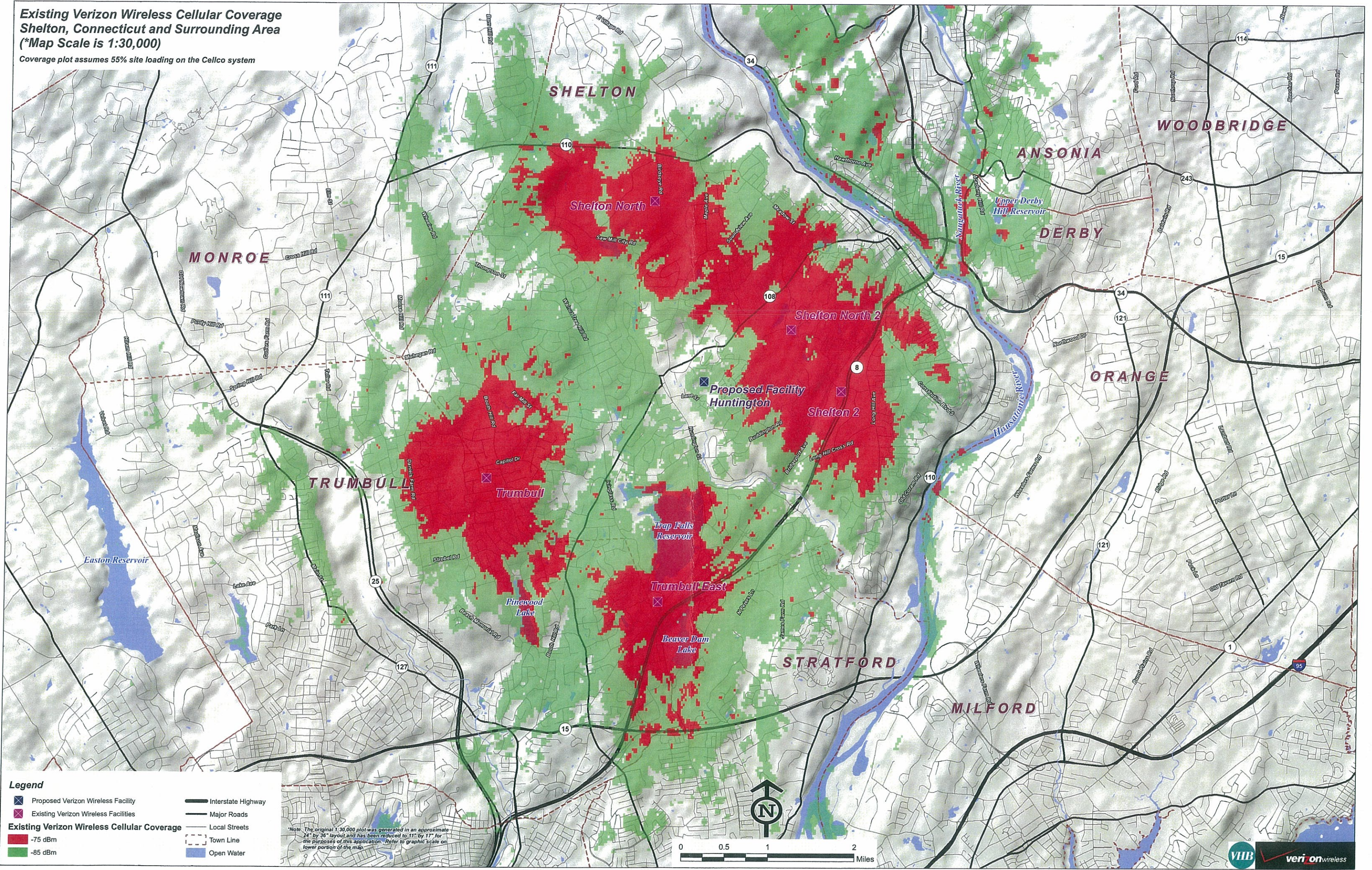


**Existing Verizon Wireless Cellular Coverage
Shelton, Connecticut and Surrounding Area
(*Map Scale is 1:30,000)**

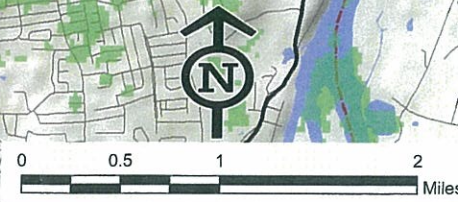
Coverage plot assumes 55% site loading on the Cellco system



Legend

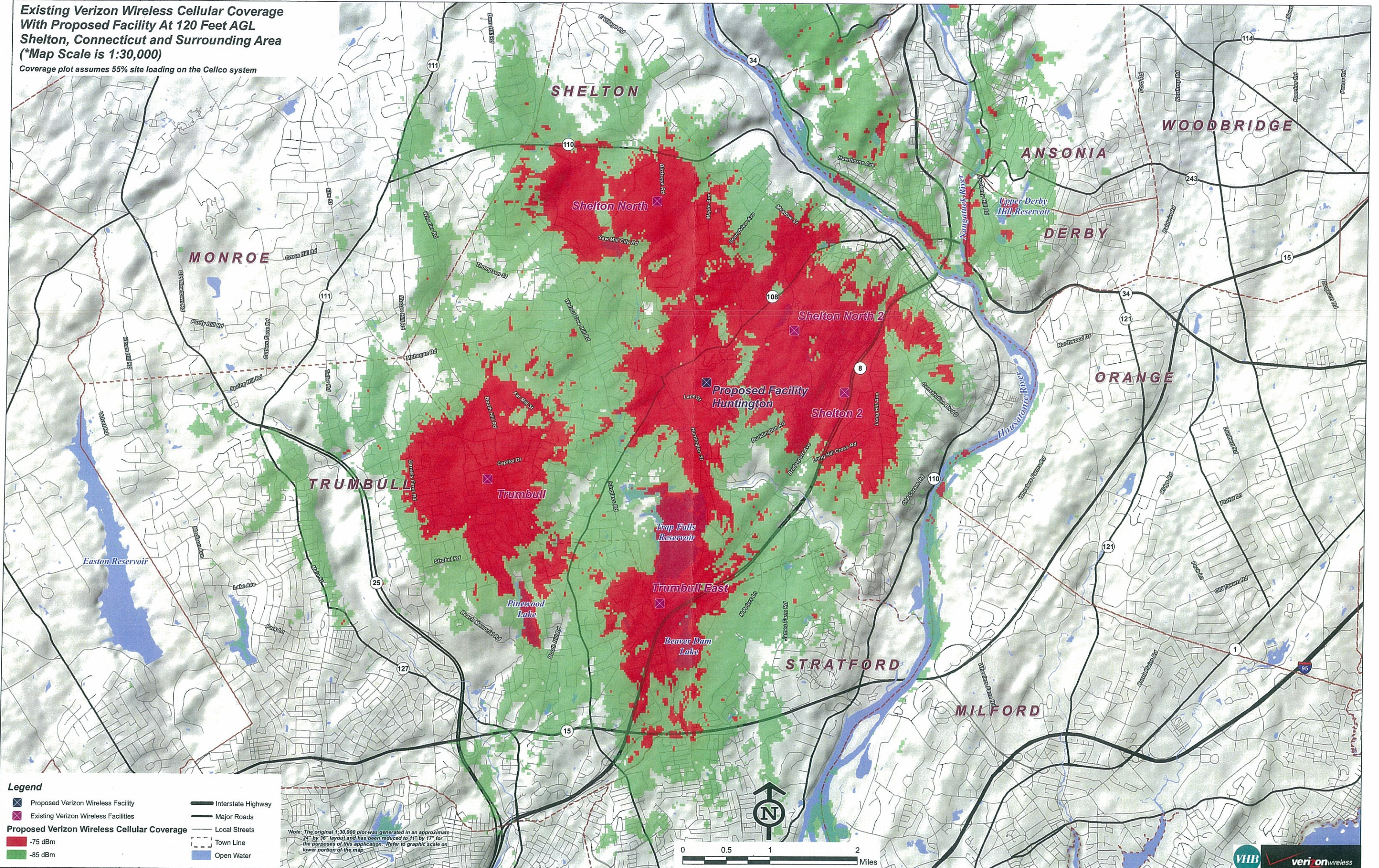
- Proposed Verizon Wireless Facility
- Existing Verizon Wireless Facilities
- Interstate Highway
- Major Roads
- Local Streets
- Town Line
- -75 dBm
- -85 dBm
- Open Water

*Note: The original 1:30,000 plot was generated in an approximate 24" by 36" layout and has been reduced to 11" by 17" for the purposes of this application. Refer to graphic scale on lower portion of the map.



**Existing Verizon Wireless Cellular Coverage
With Proposed Facility At 120 Feet AGL
Shelton, Connecticut and Surrounding Area
(*Map Scale is 1:30,000)**

Coverage plot assumes 55% site loading on the Cellco system



Legend

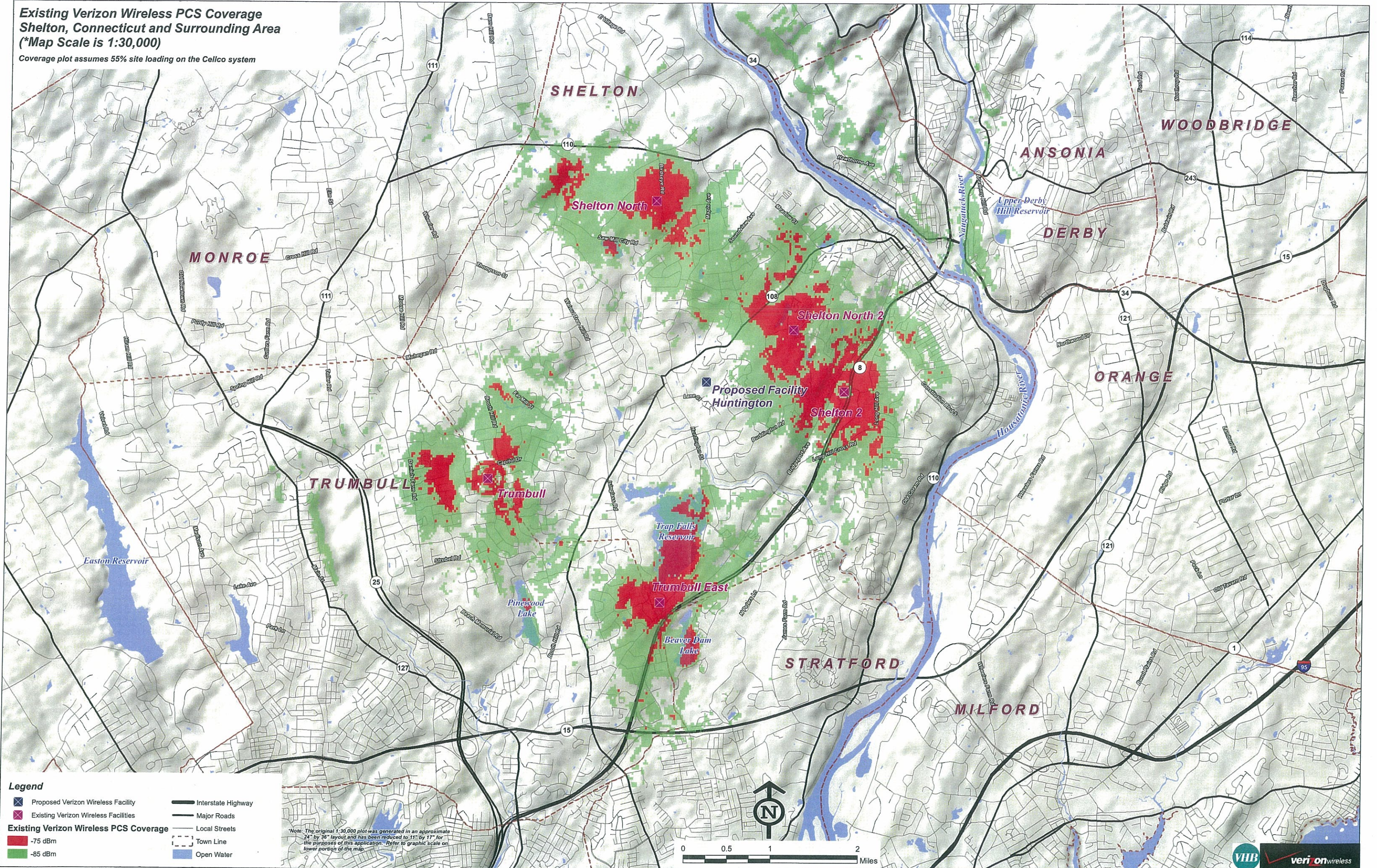
- X Proposed Verizon Wireless Facility
- X Existing Verizon Wireless Facilities
- Interstate Highway
- Major Roads
- Local Streets
- Town Line
- 75 dBm
- 85 dBm
- Open Water

*Note: The original 1:30,000 plot was generated in an approximate 24" by 36" layout and has been reduced to 11" by 17" for the purposes of this application. Refer to graphic scale on lower portion of the map.

N

**Existing Verizon Wireless PCS Coverage
Shelton, Connecticut and Surrounding Area
(*Map Scale is 1:30,000)**

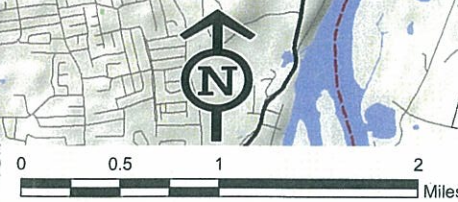
Coverage plot assumes 55% site loading on the Cellco system



Legend

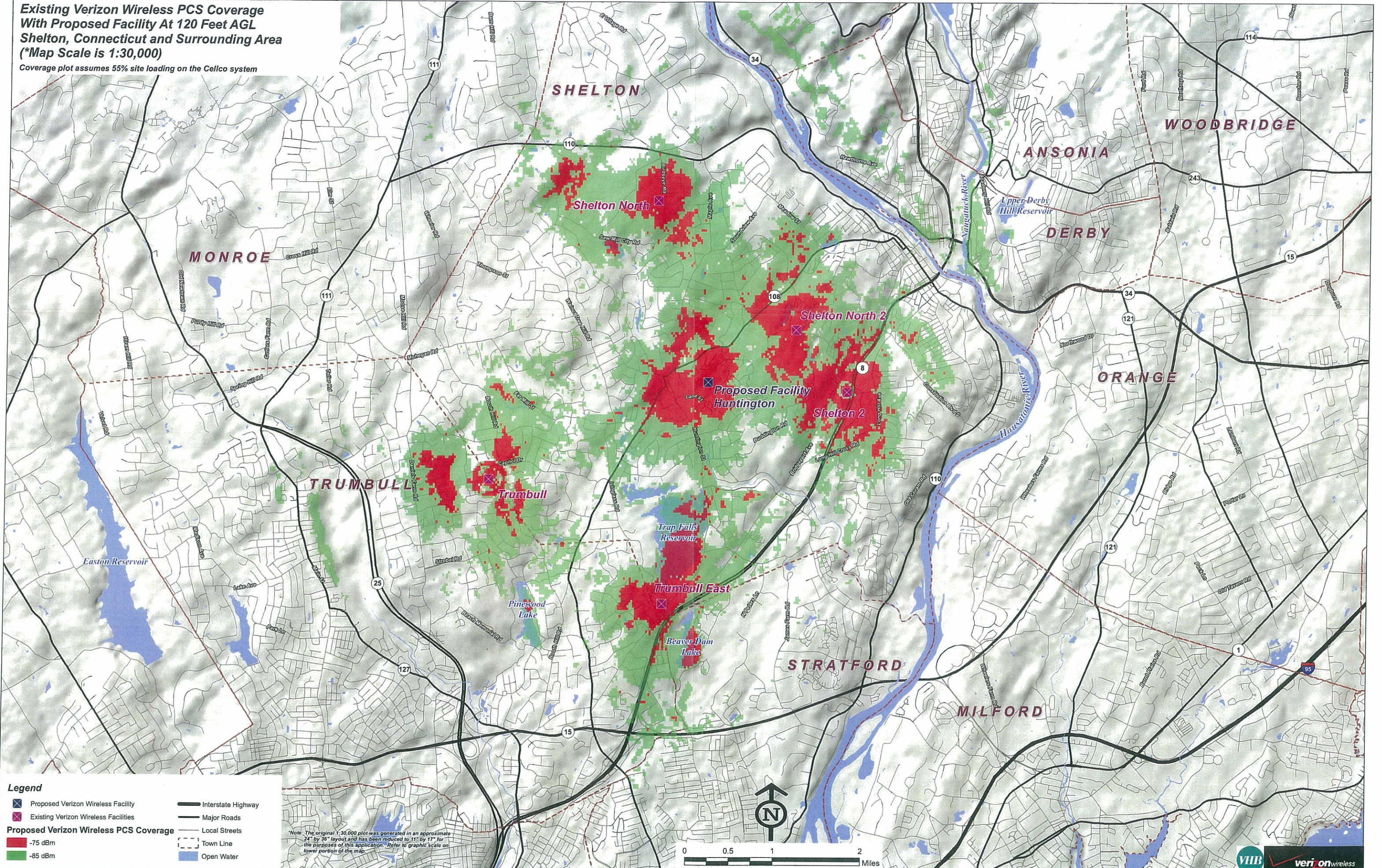
- ✕ Proposed Verizon Wireless Facility
- ✕ Existing Verizon Wireless Facilities
- Existing Verizon Wireless PCS Coverage -75 dBm
- Existing Verizon Wireless PCS Coverage -85 dBm
- Interstate Highway
- Major Roads
- Local Streets
- Town Line
- Open Water

*Note: The original 1:30,000 plot was generated in an approximate 24" by 36" layout and has been reduced to 11" by 17" for the purposes of this application. Refer to graphic scale on lower portion of the map.



**Existing Verizon Wireless PCS Coverage
With Proposed Facility At 120 Feet AGL
Shelton, Connecticut and Surrounding Area
(*Map Scale is 1:30,000)**

Coverage plot assumes 55% site loading on the Cellco system



Legend

Proposed Verizon Wireless Facility	Interstate Highway
Existing Verizon Wireless Facilities	Major Roads
-75 dBm	Local Streets
-85 dBm	Town Line
	Open Water

*Note: The original 1:30,000 plot was generated in an approximate 24" by 36" layout and has been reduced to 11" by 17" for the purposes of this application. Refer to graphic scale on lower portion of the map.

0 0.5 1 2 Miles