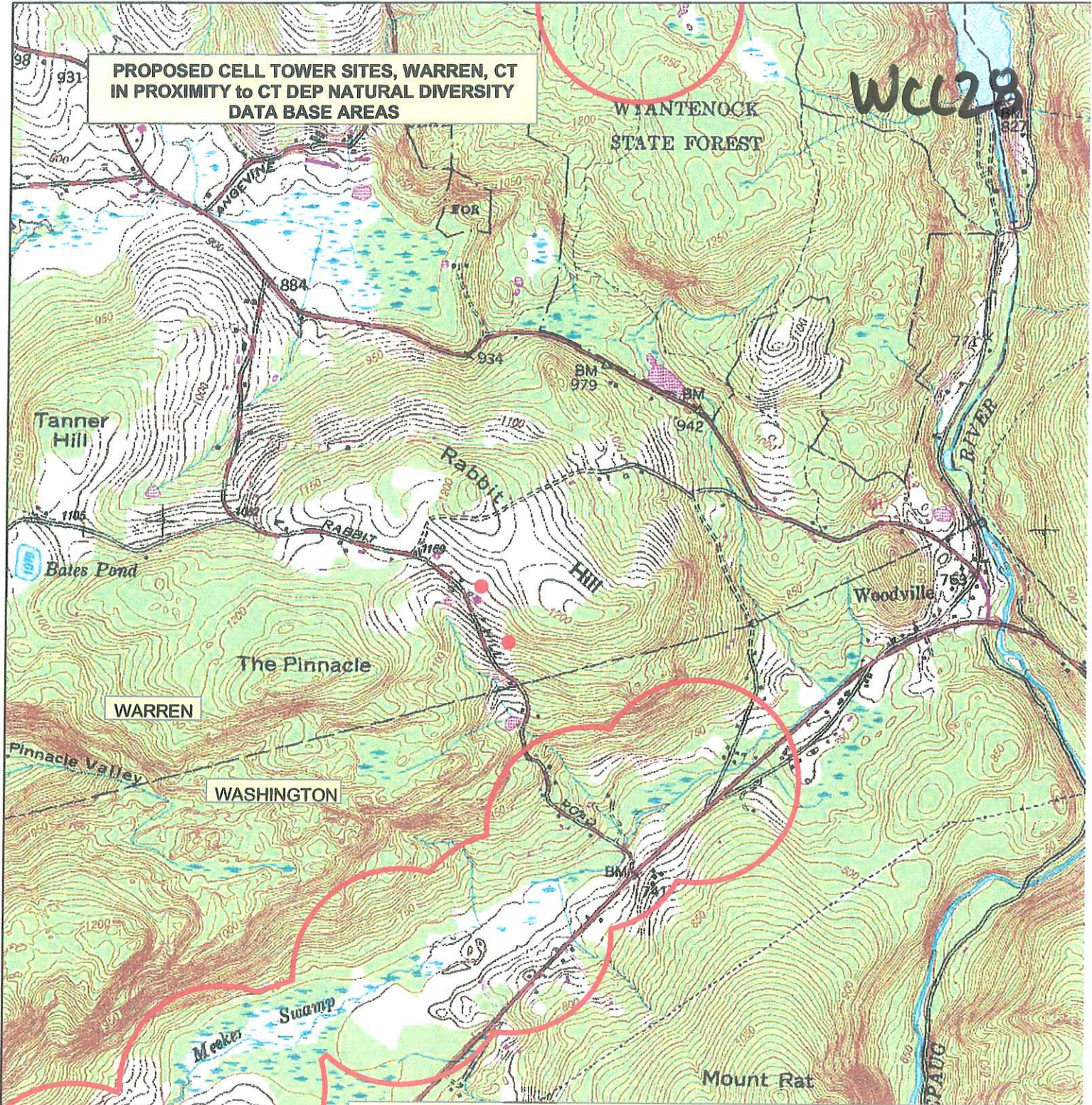


**PROPOSED CELL TOWER SITES, WARREN, CT
IN PROXIMITY TO CT DEP NATURAL DIVERSITY
DATA BASE AREAS**

WCL28

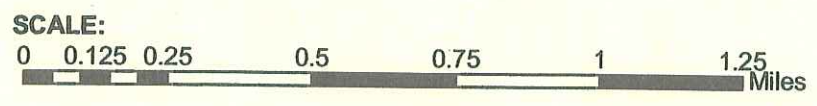


**MACRICOSTAS
PRESERVE**

- Approximate Cell Tower Site
- CT DEP Natural Diversity Data Base Area (rare species/critical habitat)

USGS Quad No. 47

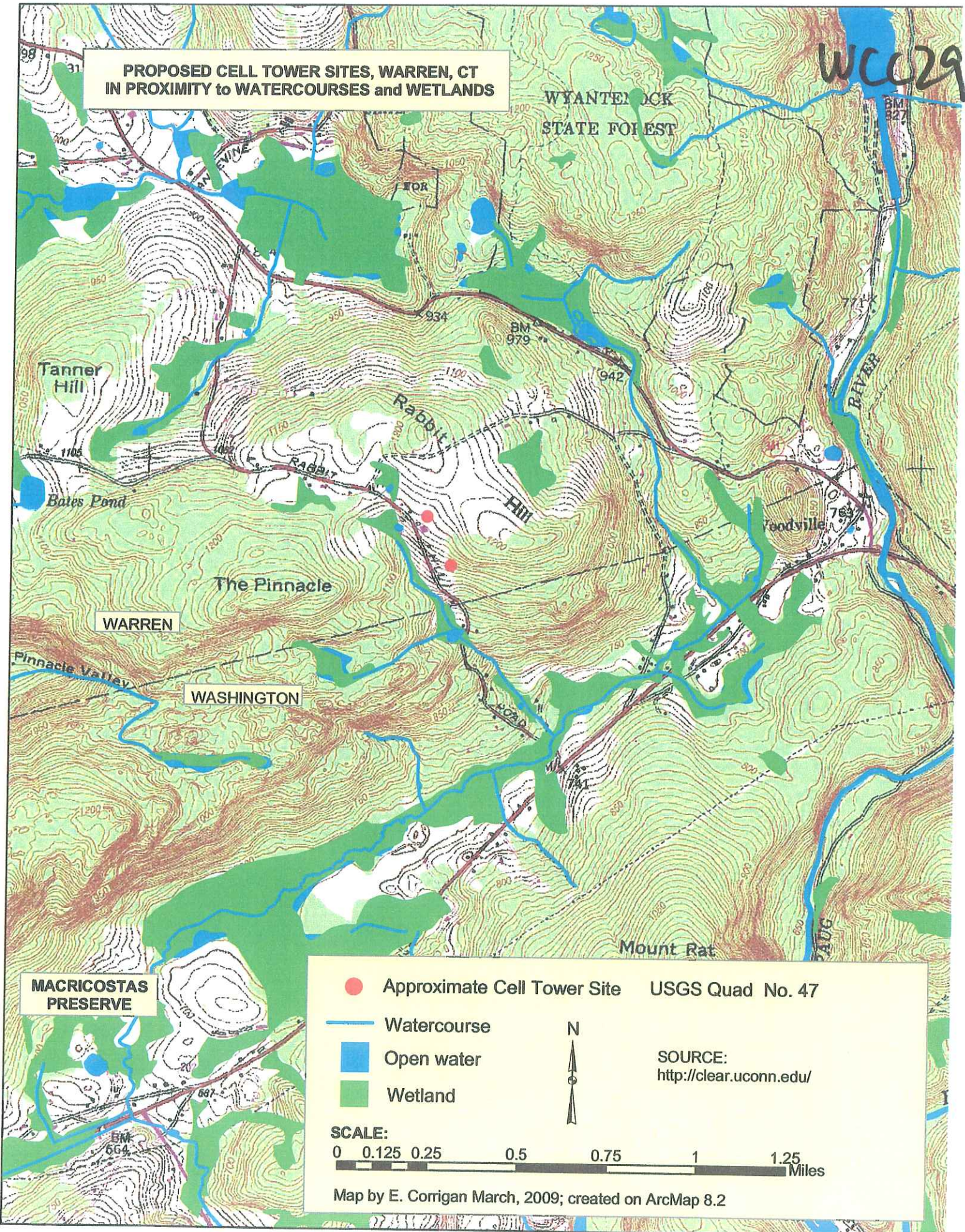
SOURCES:
<http://clear.uconn.edu/>
<http://www.ct.gov/dep/site/default.asp>



Map by E. Corrigan March, 2009; created on ArcMap 8.2

**PROPOSED CELL TOWER SITES, WARREN, CT
IN PROXIMITY to WATERCOURSES and WETLANDS**

WCC029



WYANTENOCK
STATE FOREST

Tanner
Hill

Bates Pond

Rabbit
Hill

The Pinnacle

WARREN

WASHINGTON

Woodville

Mount Rat

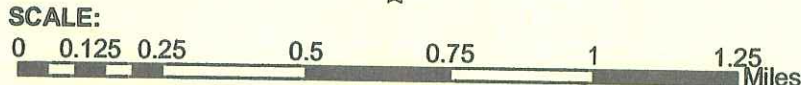
MACRICOSTAS
PRESERVE

● Approximate Cell Tower Site USGS Quad No. 47

- Watercourse
- Open water
- Wetland



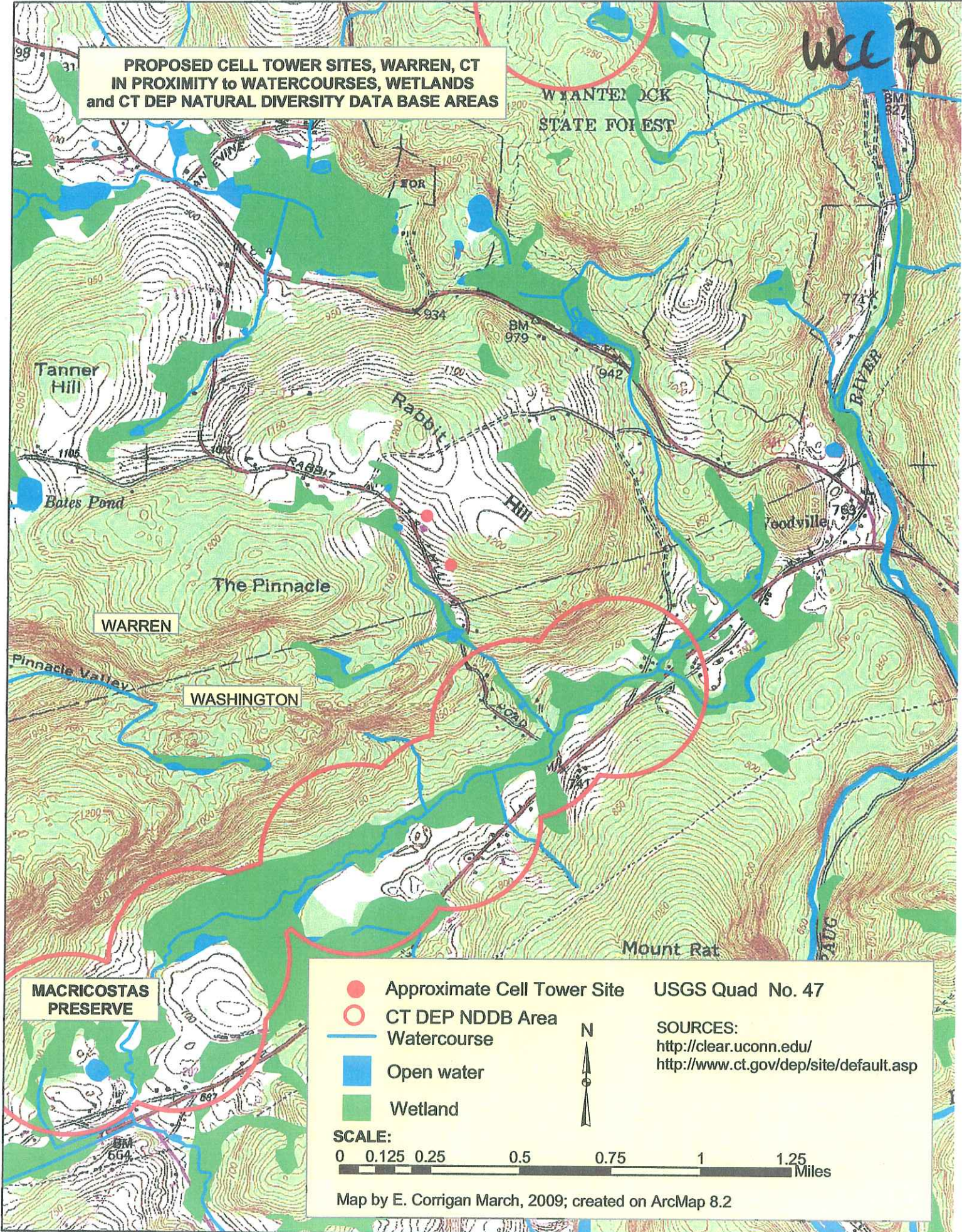
SOURCE:
<http://clear.uconn.edu/>



Map by E. Corrigan March, 2009; created on ArcMap 8.2

**PROPOSED CELL TOWER SITES, WARREN, CT
IN PROXIMITY TO WATERCOURSES, WETLANDS
and CT DEP NATURAL DIVERSITY DATA BASE AREAS**

WCC 30



MACRICOSTAS PRESERVE

- Approximate Cell Tower Site
- CT DEP NDDB Area
- Watercourse
- Open water
- Wetland

USGS Quad No. 47

SOURCES:
<http://clear.uconn.edu/>
<http://www.ct.gov/dep/site/default.asp>

SCALE:
 0 0.125 0.25 0.5 0.75 1 1.25 Miles

Map by E. Corrigan March, 2009; created on ArcMap 8.2