

STATE AND FEDERAL LISTED SPONSOR
AND SUPPORTING PARTIAL COSTS

1:50,000


- State Boundary
 County Boundary
 Town Boundary
 Interstate
 Federal Road
 State Road
 Local Road
 Railroad
 Shore
 Fringe Marsh
 Intermittent Water
 Perennial Water
 Salt Water
 Tidal, Sand Flats
 Rocks in Water
 Inundated Area
 Marsh
 Ditch

LD MA

DATA SOURCE
 The data for this map was derived from the following sources:
 1. The Massachusetts Department of Transportation (MassDOT) for road data.
 2. The Massachusetts Department of Environmental Protection (MassDEP) for water data.
 3. The Massachusetts Department of Conservation and Recreation (MassDCR) for land use data.
 4. The Massachusetts Department of State Police (MassSP) for town boundaries.
 5. The Massachusetts Department of State Planning and Development (MassSPD) for county boundaries.
 6. The Massachusetts Department of State Planning and Development (MassSPD) for state boundaries.



Scale: 1:50,000
 0 1 2 3 4 5 Miles
 0 1 2 3 4 5 Kilometers

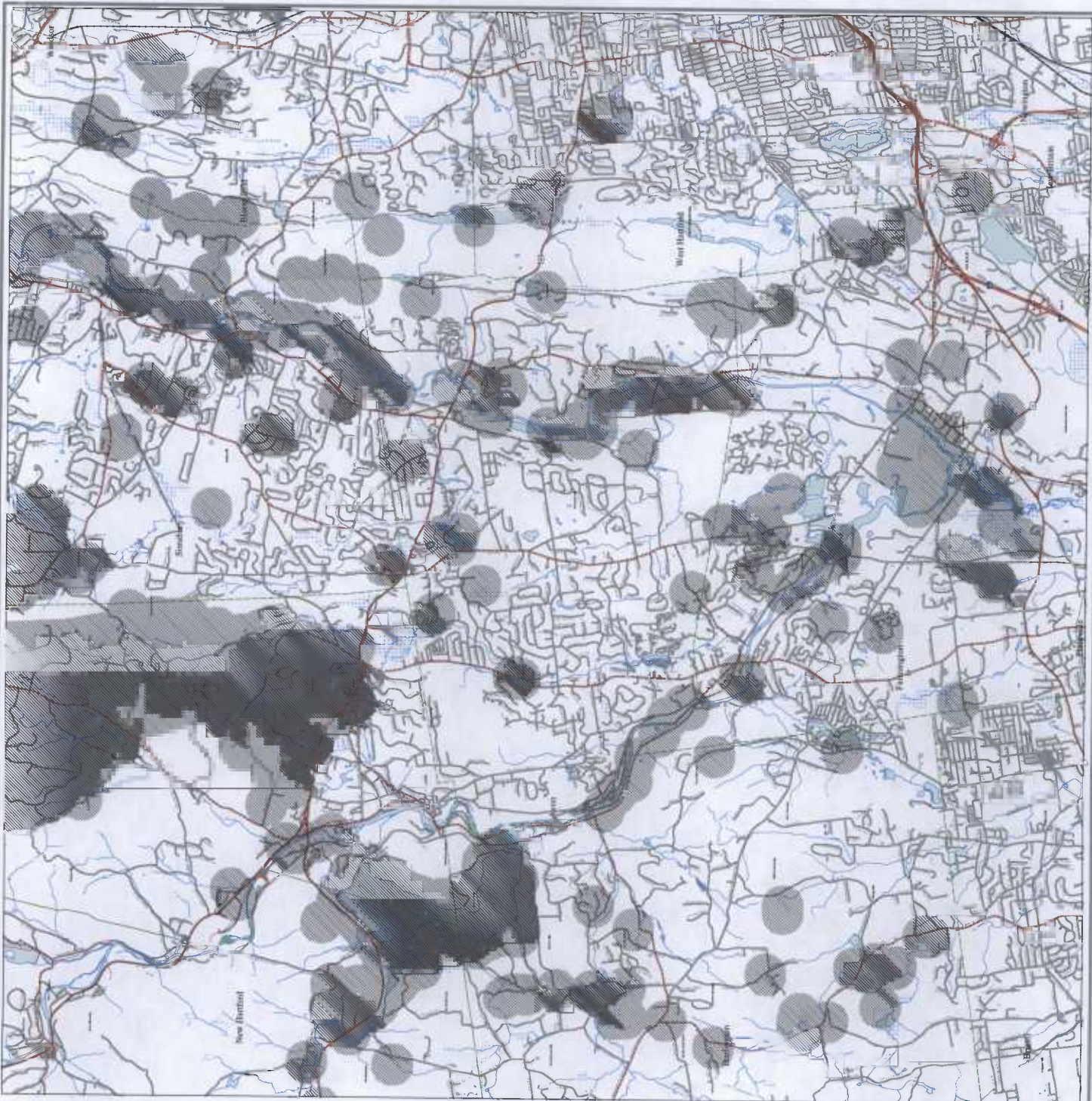
MASSACHUSETTS DEPARTMENT OF STATE PLANNING AND DEVELOPMENT
 100 STATE STREET, SUITE 1000, BOSTON, MA 02109
 TEL: 617-725-7000 FAX: 617-725-7001
 WWW.DPS.PSTATE.MA.GOV

MASSACHUSETTS DEPARTMENT OF ENVIRONMENTAL PROTECTION
 100 STATE STREET, SUITE 1000, BOSTON, MA 02109
 TEL: 617-725-7000 FAX: 617-725-7001
 WWW.MASSDEP.GOV

MASSACHUSETTS DEPARTMENT OF TRANSPORTATION
 100 STATE STREET, SUITE 1000, BOSTON, MA 02109
 TEL: 617-725-7000 FAX: 617-725-7001
 WWW.MASSDOT.GOV

MASSACHUSETTS DEPARTMENT OF CONSERVATION AND RECREATION
 100 STATE STREET, SUITE 1000, BOSTON, MA 02109
 TEL: 617-725-7000 FAX: 617-725-7001
 WWW.MASSDCR.GOV

MASSACHUSETTS DEPARTMENT OF STATE POLICE
 100 STATE STREET, SUITE 1000, BOSTON, MA 02109
 TEL: 617-725-7000 FAX: 617-725-7001
 WWW.MASSSP.GOV



Natural Diversity Database Map - Town of Avon Excerpt at 800% Magnification

