

AQUIFER PROTECTION AREAS

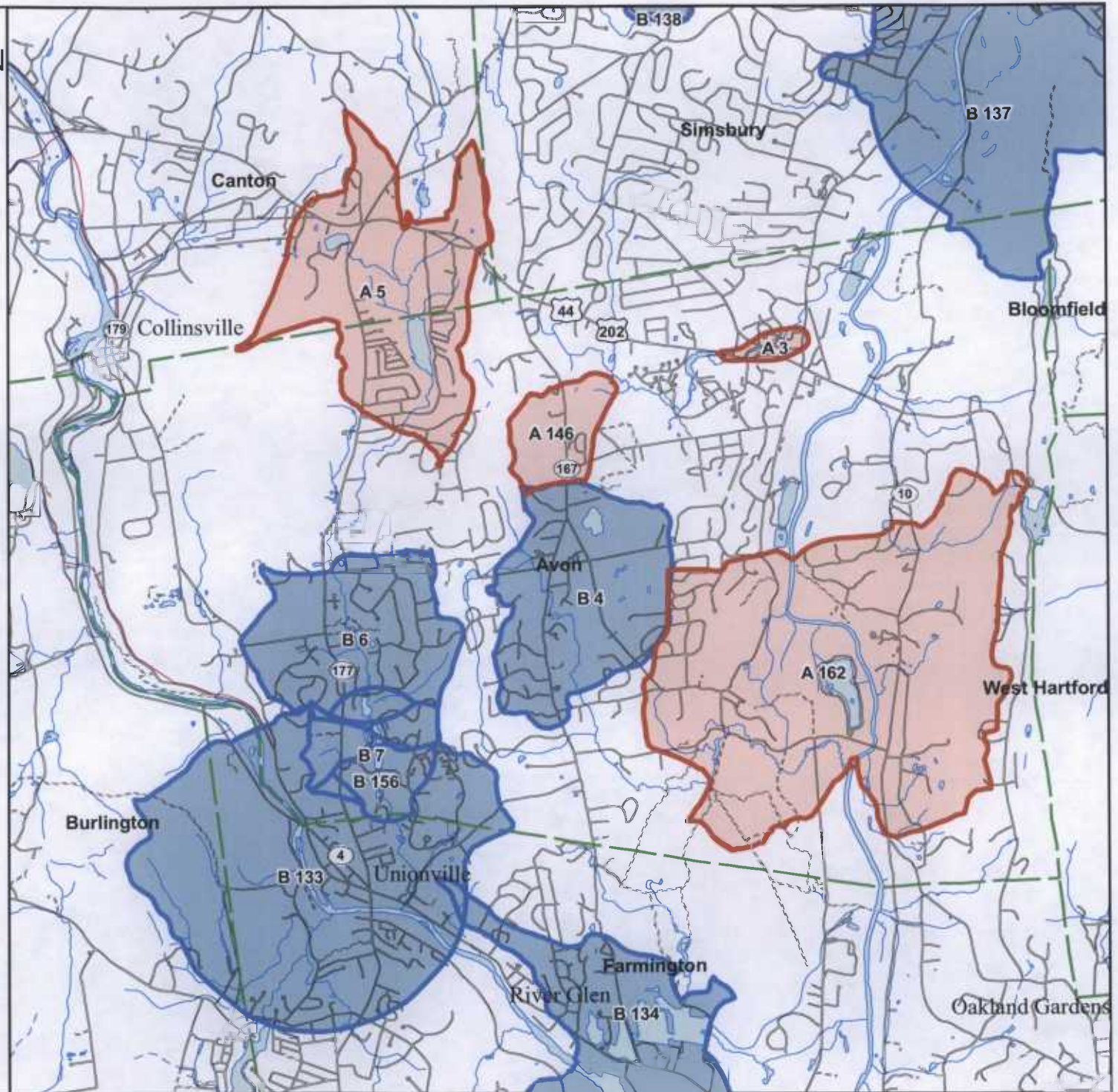
AVON, CT

October 6, 2008

- A # Level A APA (Final Adopted)
- X # Level A APA (Final)
- B # Level B APA (Preliminary)
- # APA ID Number
- Town Boundary

NOTE: This map shows Connecticut's Aquifer Protection Areas, as delineated through the Level A and Level B Mapping Processes. Aquifer Protection Areas are delineated for active public water supply wells in stratified drift that serve more than 1000 people, in accordance with Sections 22a-354c and 22a-354z of the Connecticut General Statutes. Level B Mapping delineates a preliminary aquifer protection area, providing an estimate of the land area from which the well draws its water. Level A Mapping delineates the final Aquifer Protection Area, which becomes the regulatory boundary for land use controls designed to protect the well from contamination. As Level A Mapping is completed for each well field and approved by DEP, it will replace the Level B Mapping. Towns that have adopted the Aquifer Protection Areas at the local level and for which land use regulations are now in place are designated by the solid pink/red shading.

QUESTIONS: DEP, Bureau of Water Protection and Land Reuse, Planning and Standards Division
Phone (860) 424-3020
www.ct.gov/dep/aquiferprotection



Aquifer Protection Areas / Regulatory
Avon, Conn. II

