

Figure 14. Wilbraham OH Locator Map.



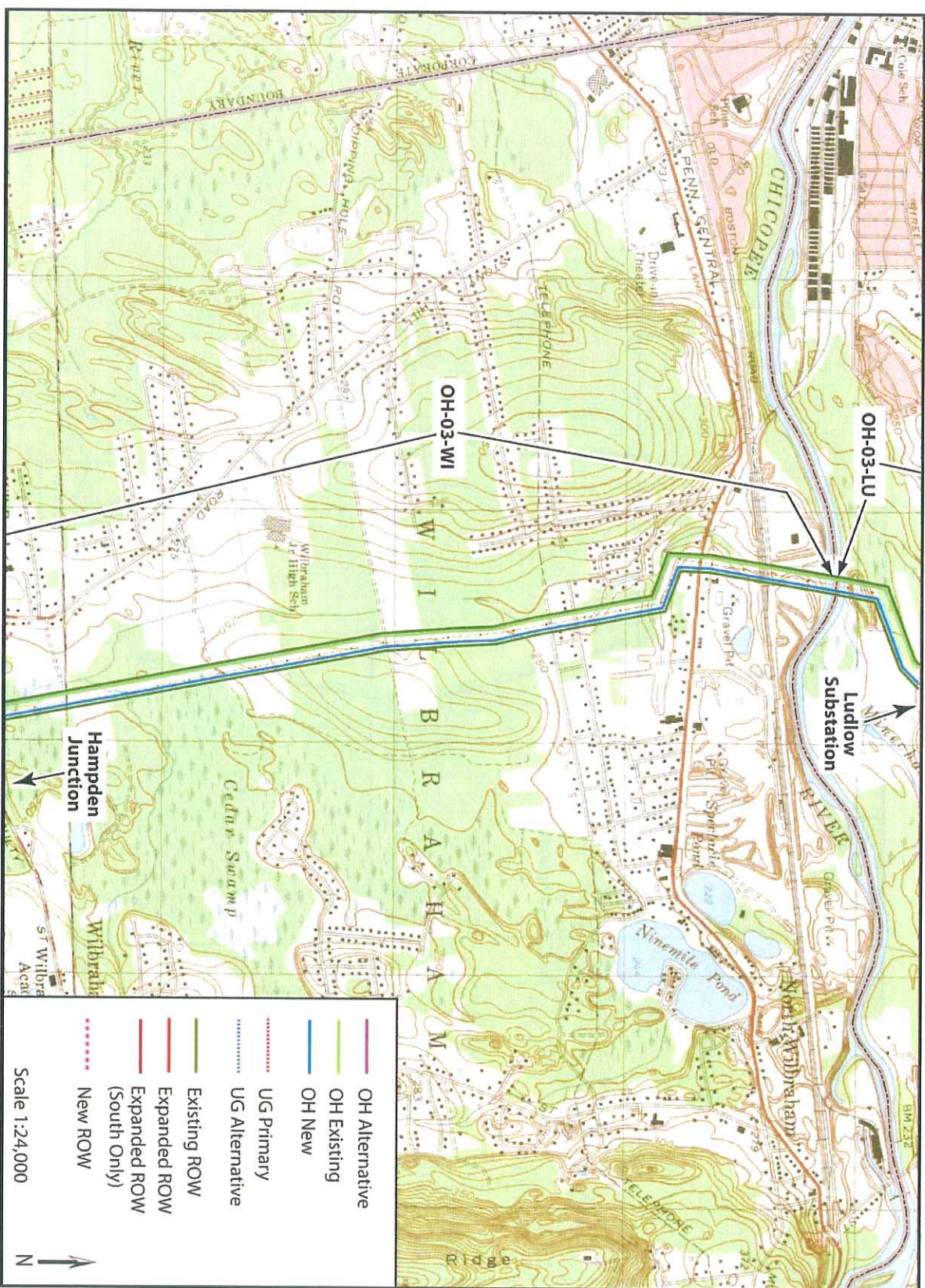


Figure 15. Wilbraham OH Segments – Map 1.



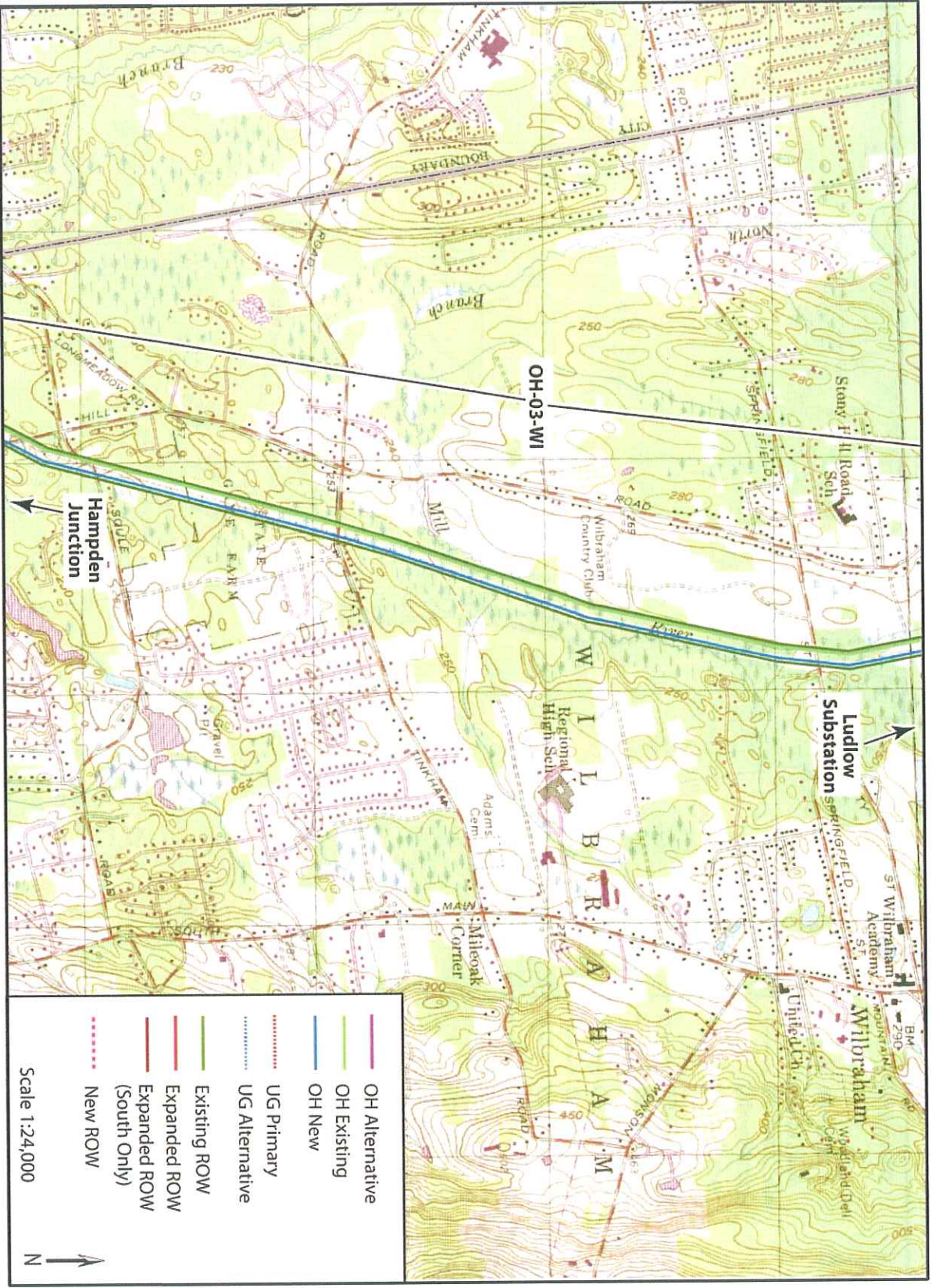


Figure 16. Wilbraham OH Segments – Map 2.



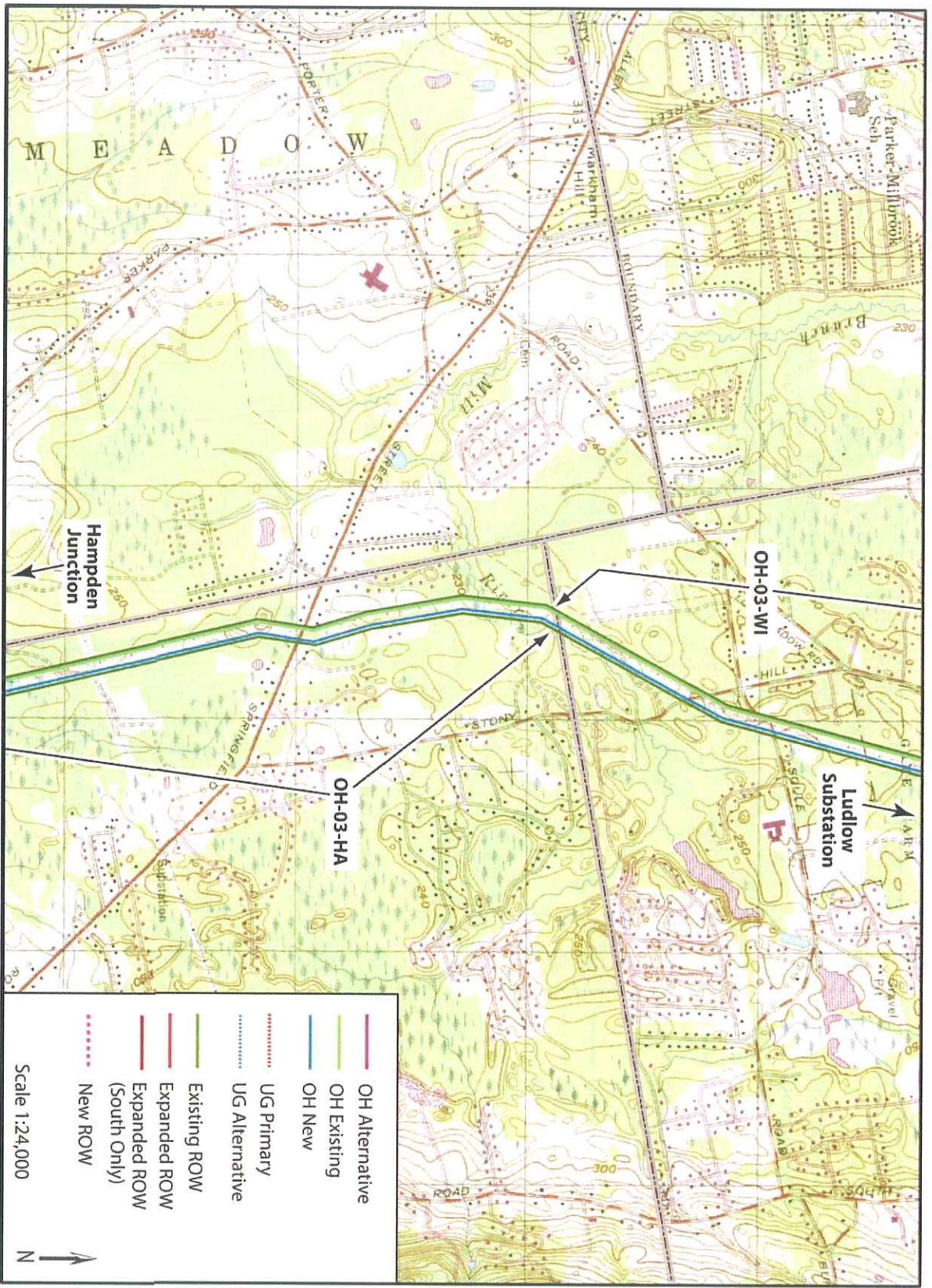


Figure 17. Wilbraham OH Segments – Map 3.



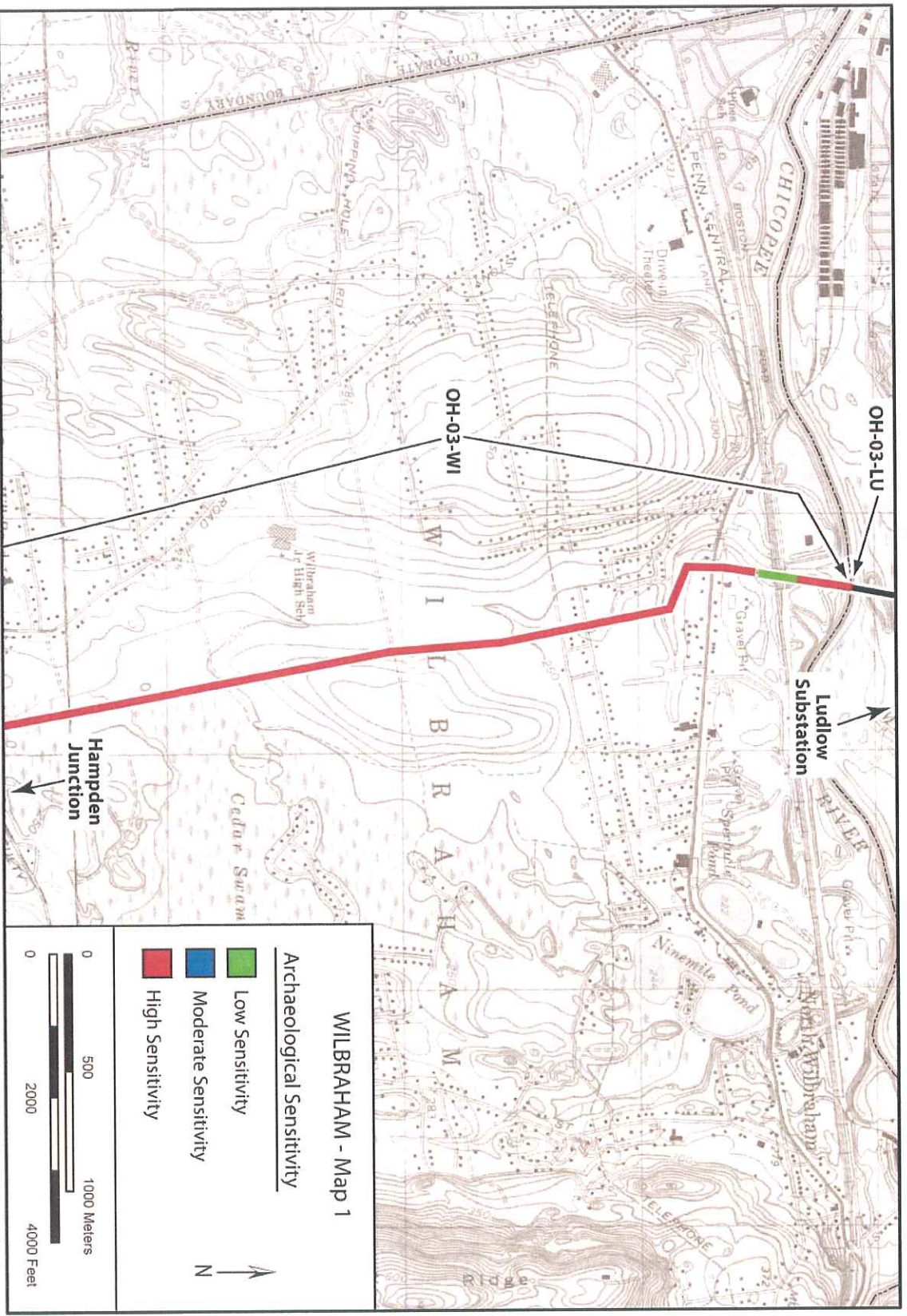


Figure 18. Wilbraham OH Segments Sensitivity – Map 1.







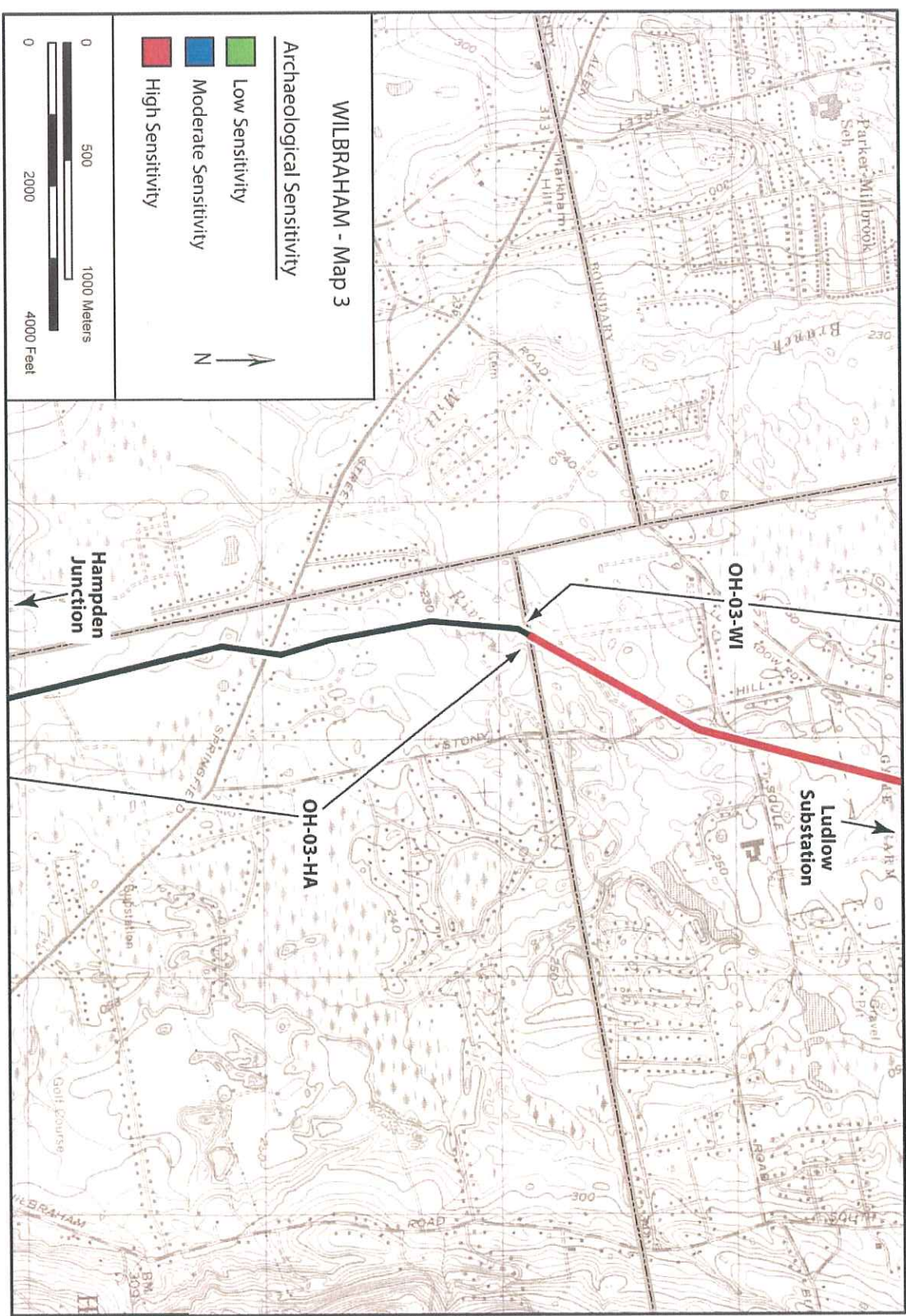


Figure 20. Wilbraham OH Segments Sensitivity – Map 3.



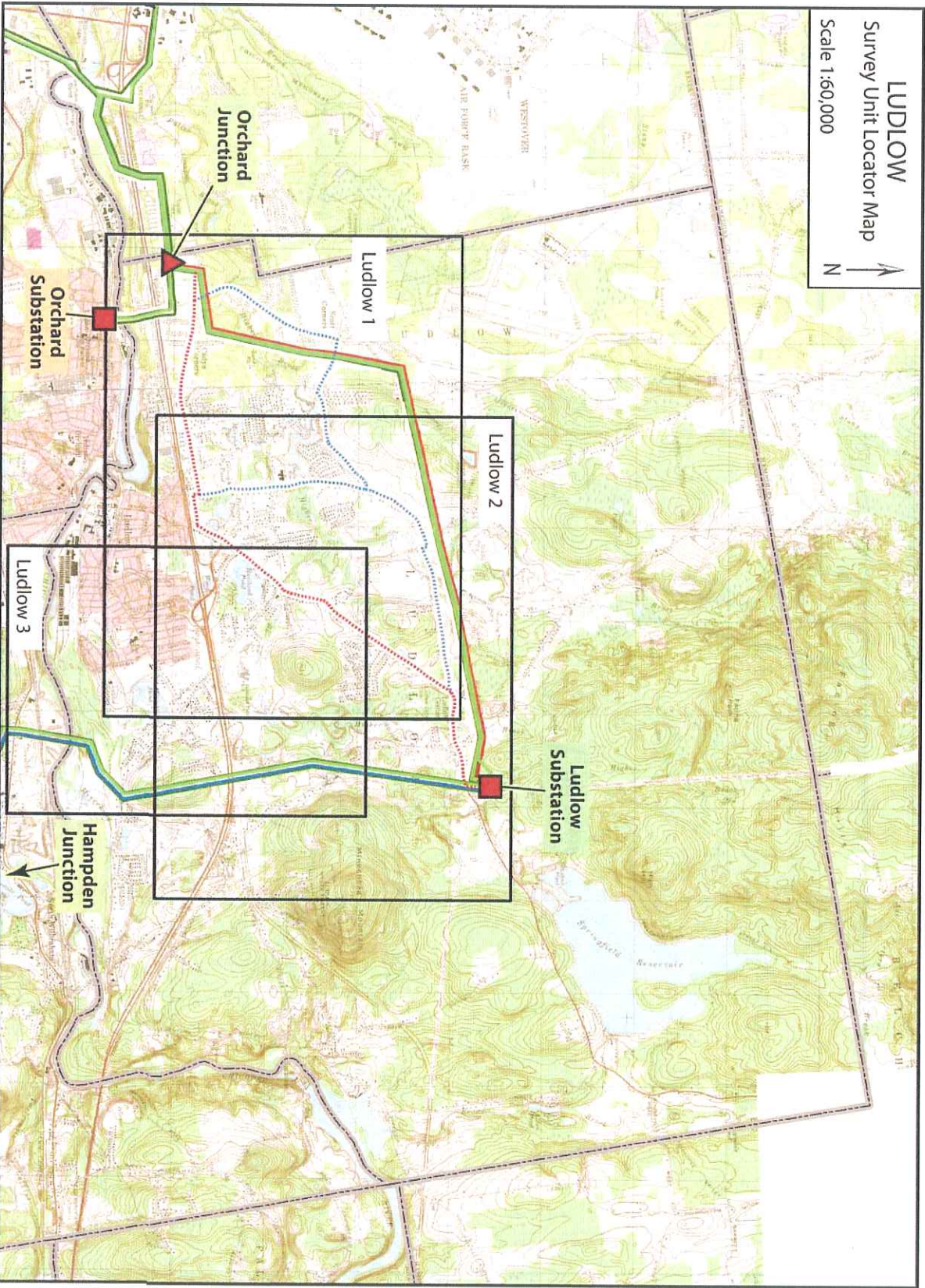


Figure 21. Ludlow OH-UG Locator Map.



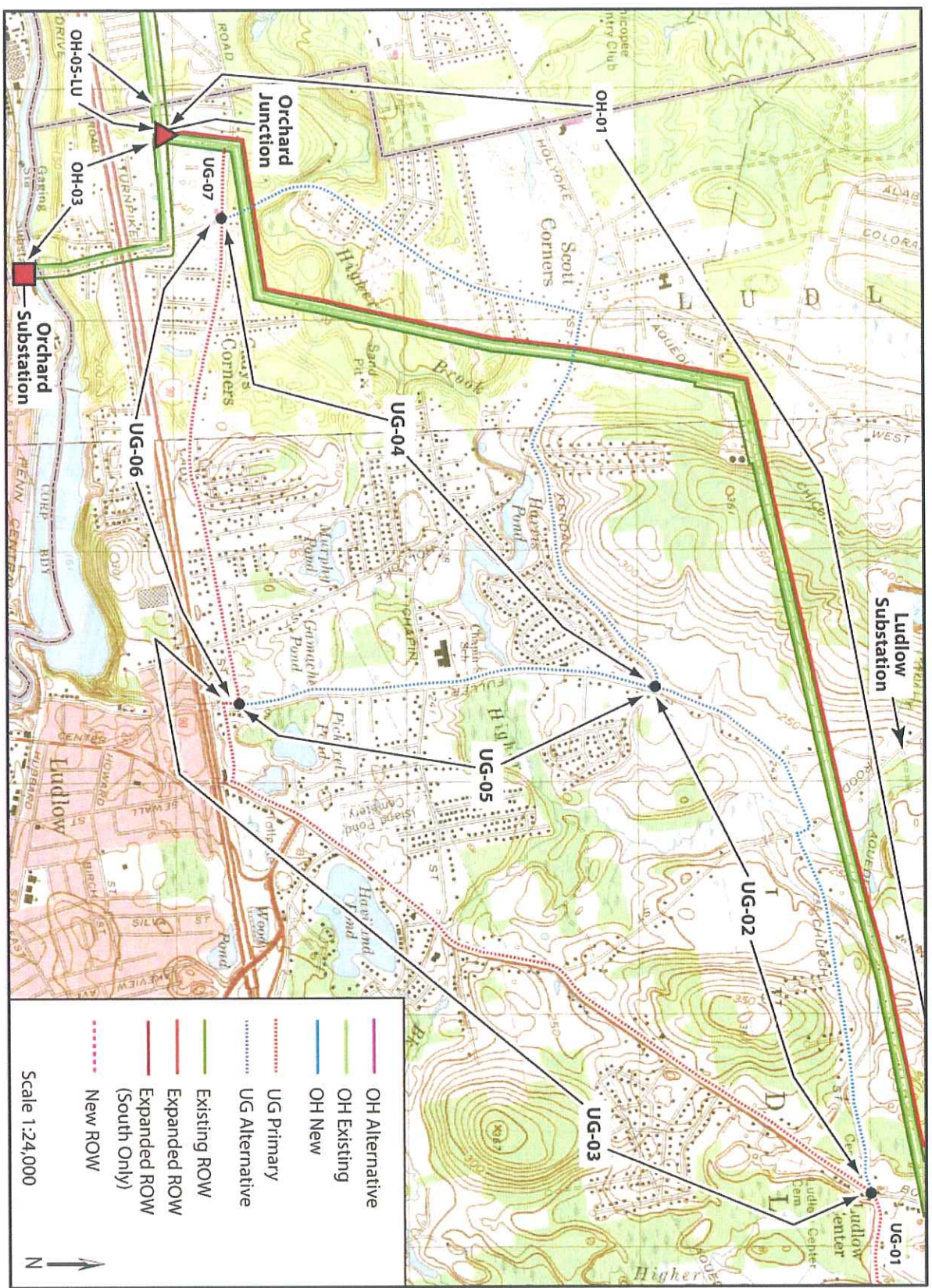


Figure 22. Ludlow OH-UG Segments – Map 1.



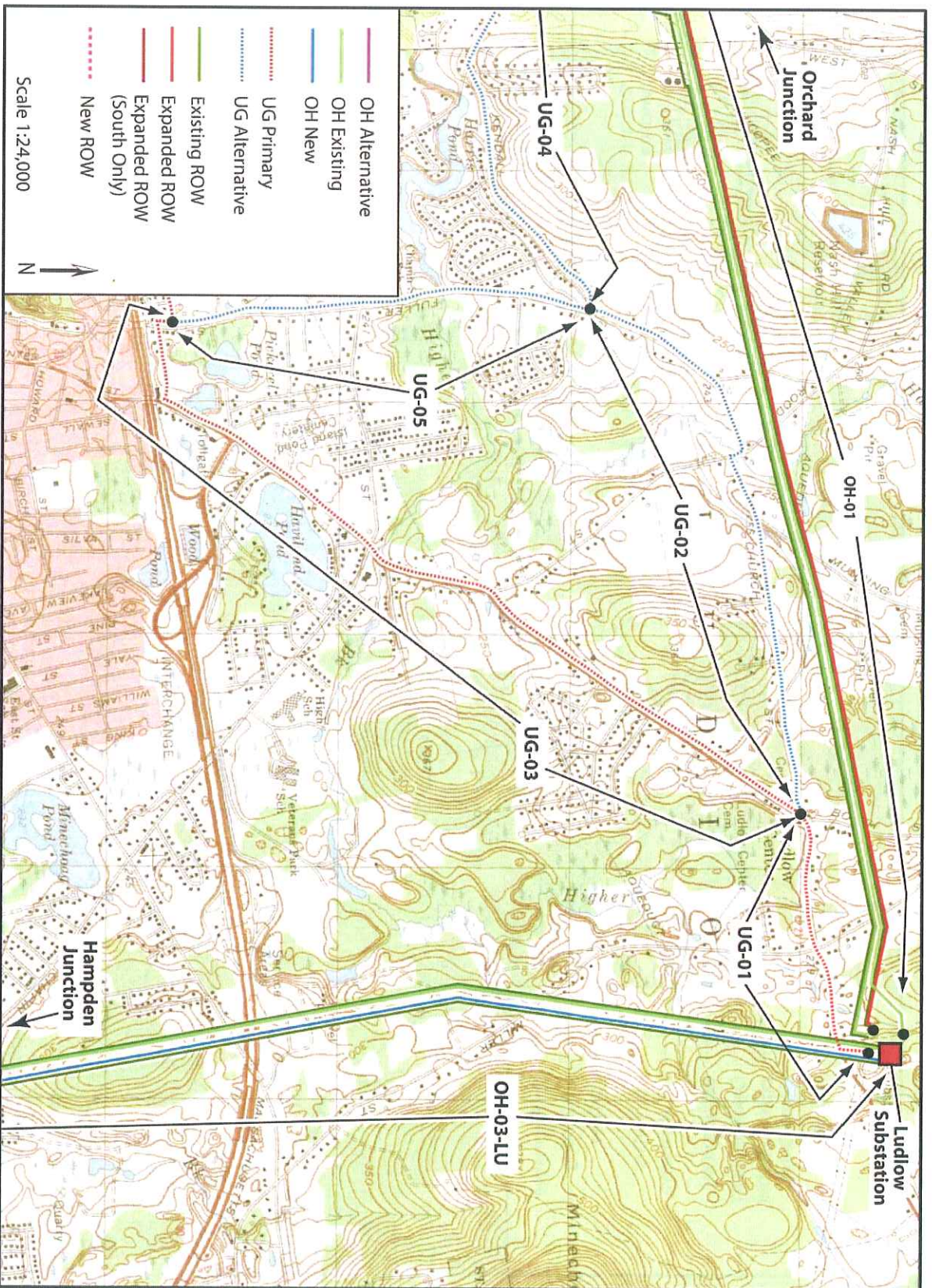


Figure 23. Ludlow OH-UG Segments – Map 2.







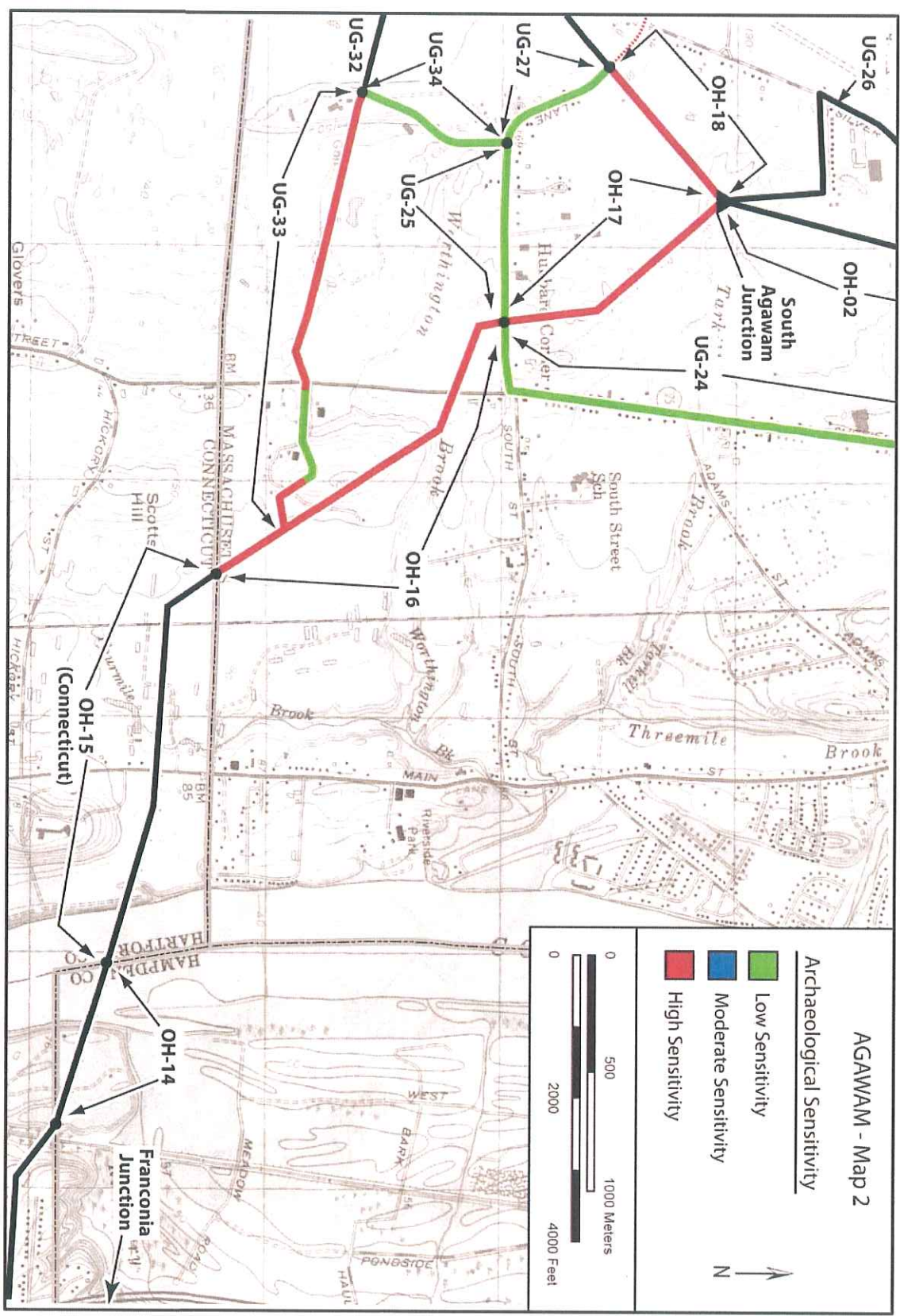


Figure 35. Agawam OH-UG Segments Sensitivity – Map 2.



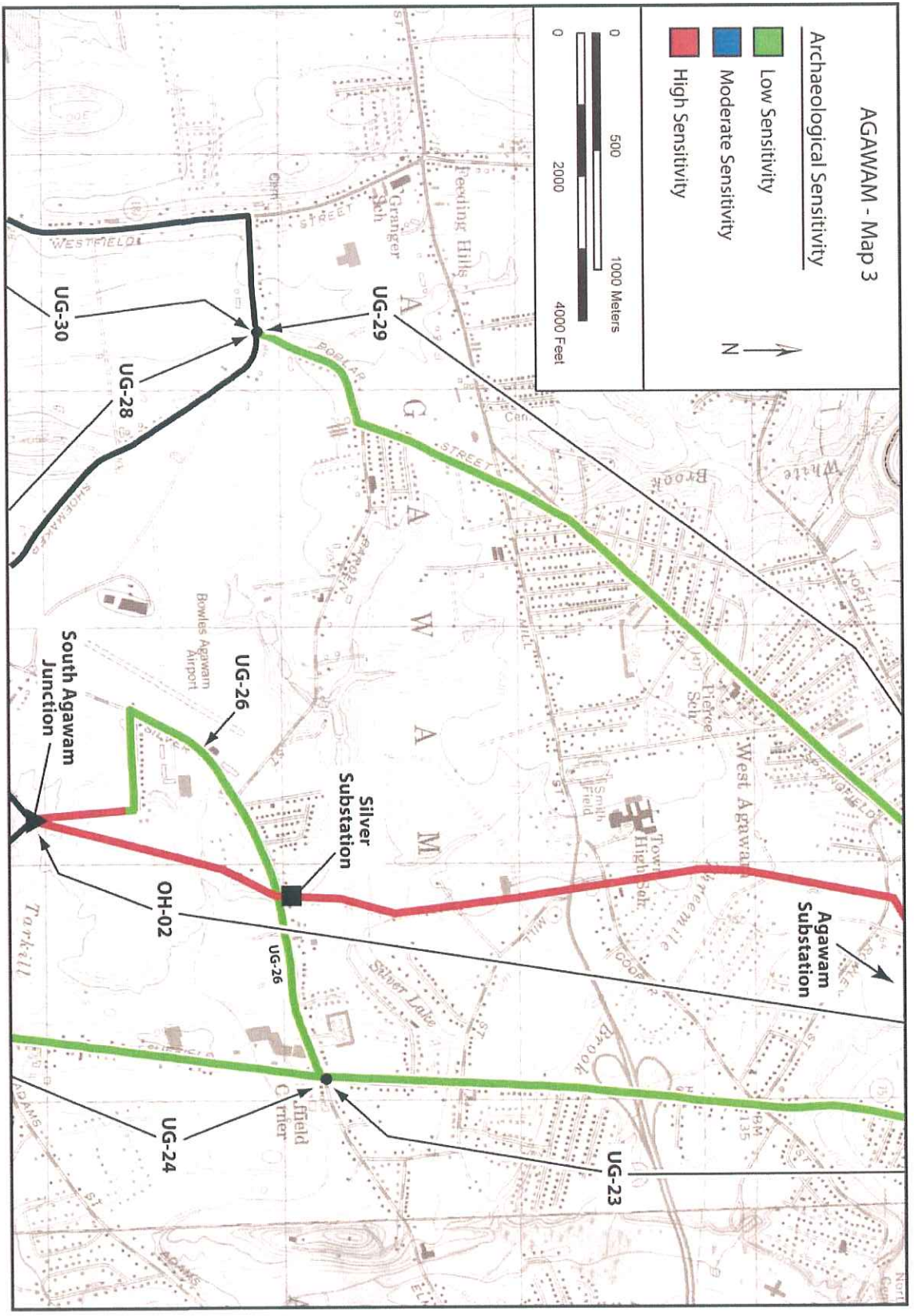


Figure 36. Agawam OH-UG Segments Sensitivity – Map 3.



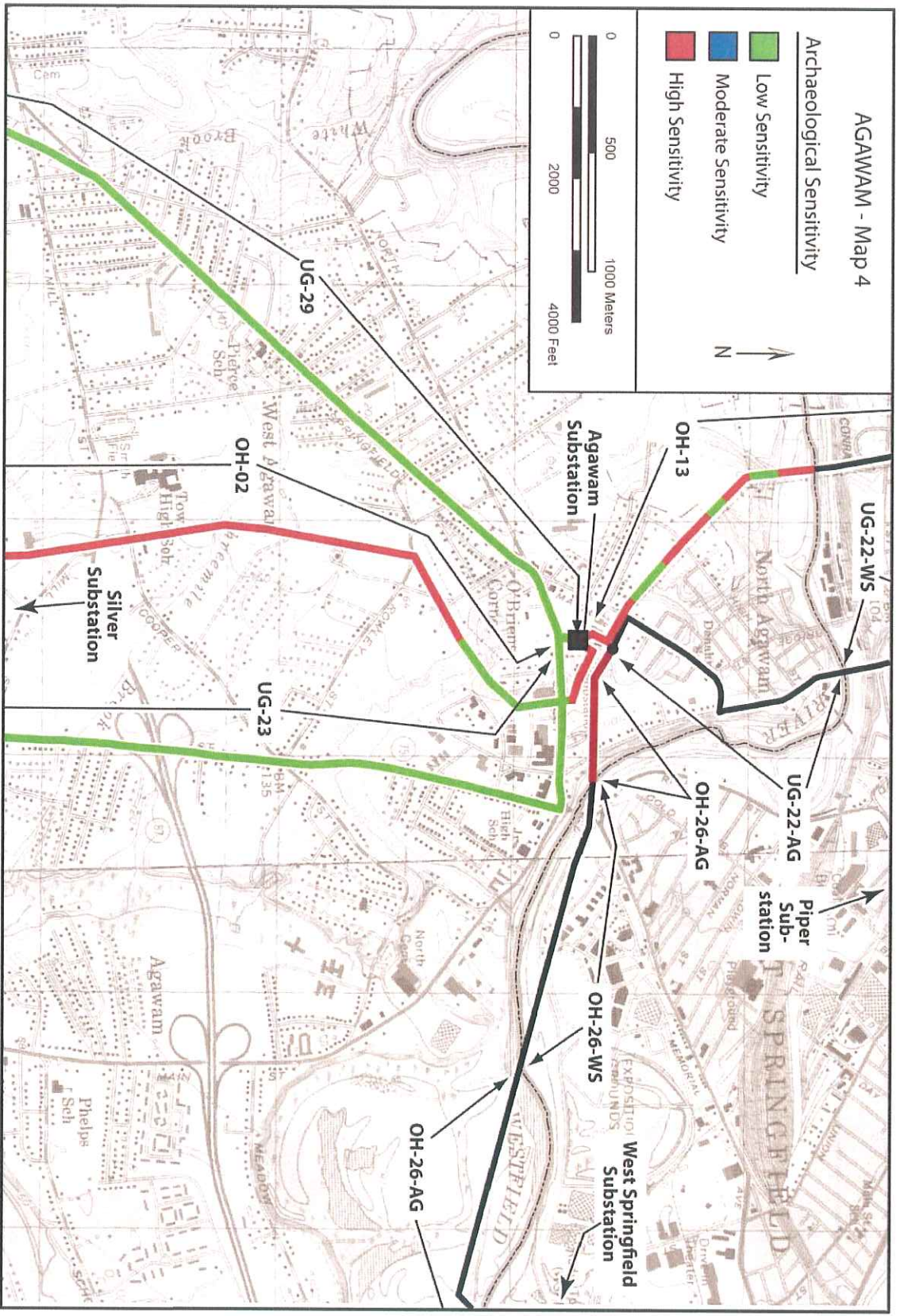


Figure 37. Agawam OH-UG Segments Sensitivity – Map 4.



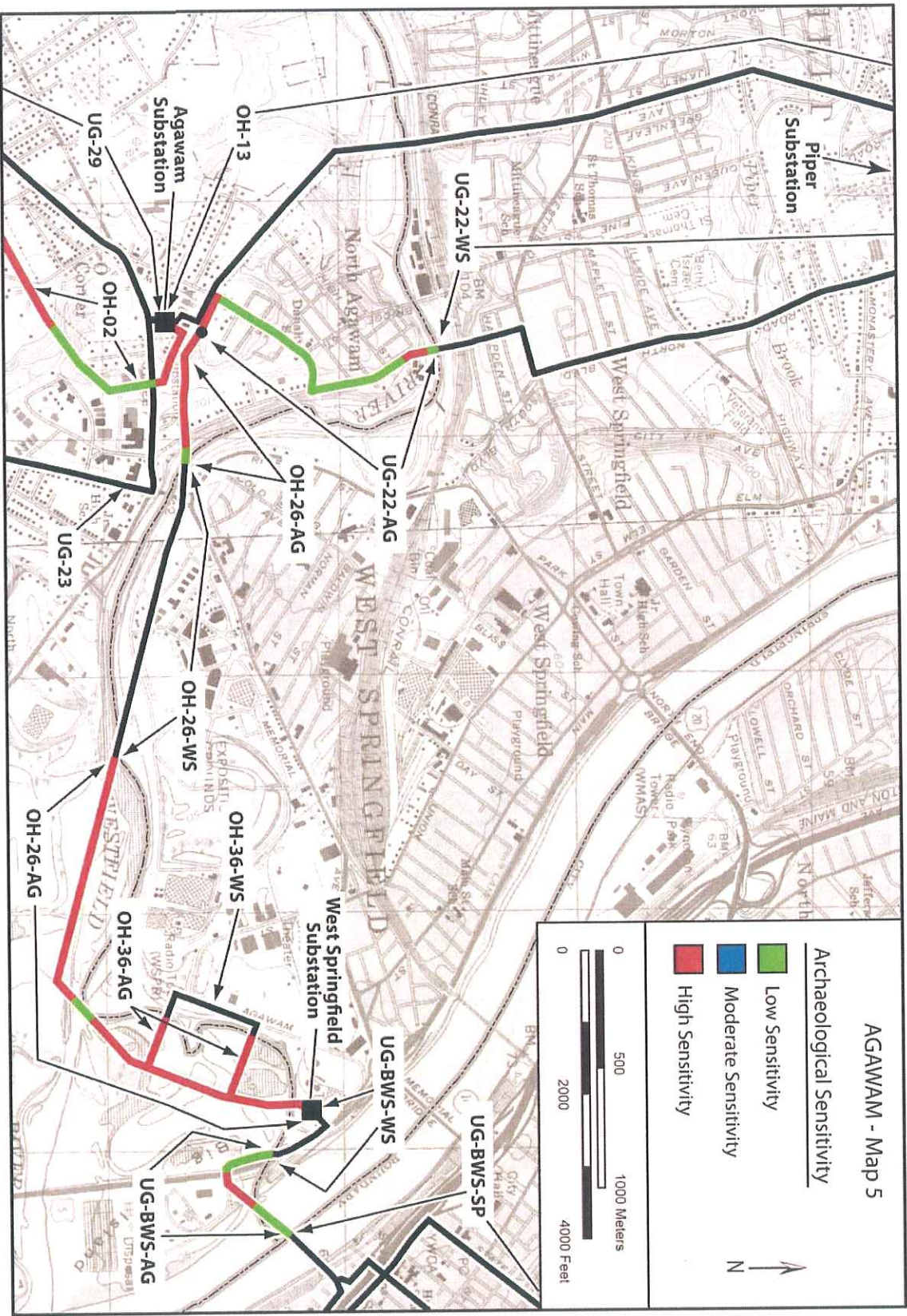


Figure 38. Agawam OH-UG Segments Sensitivity – Map 5.



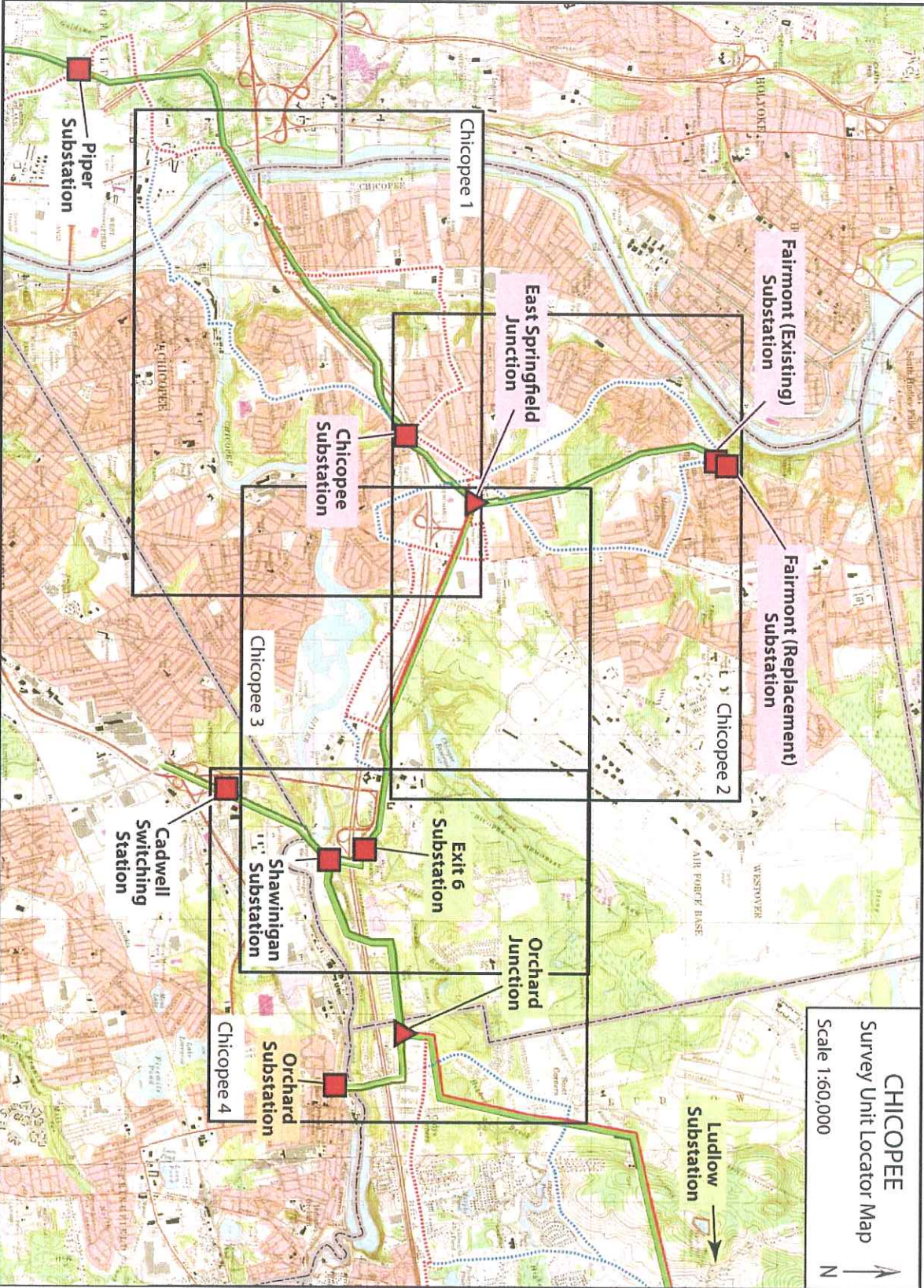


Figure 39. Chicopee OH-UG Locator Map.



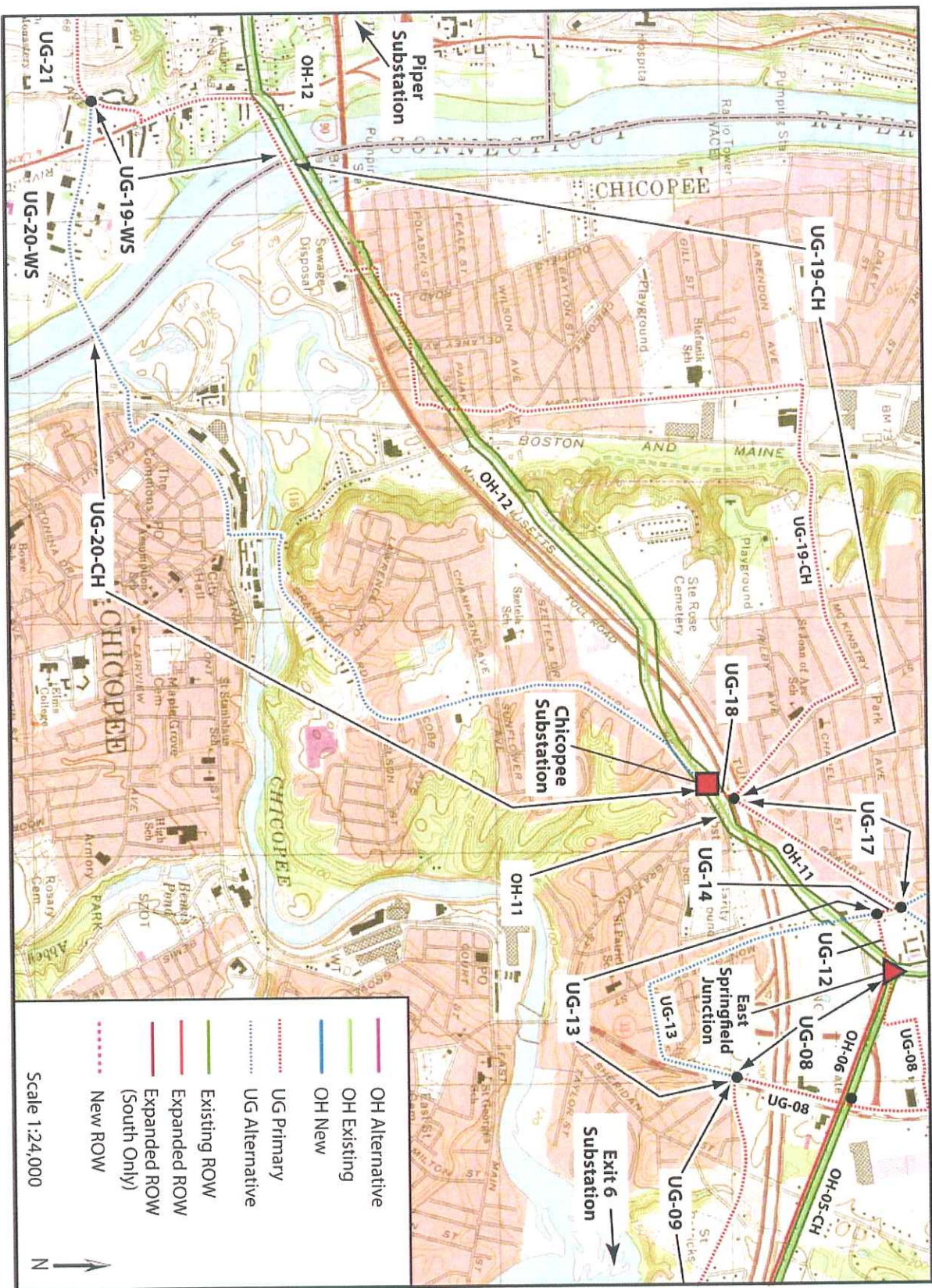


Figure 40. Chicopee OH-UG Segments – Map 1.



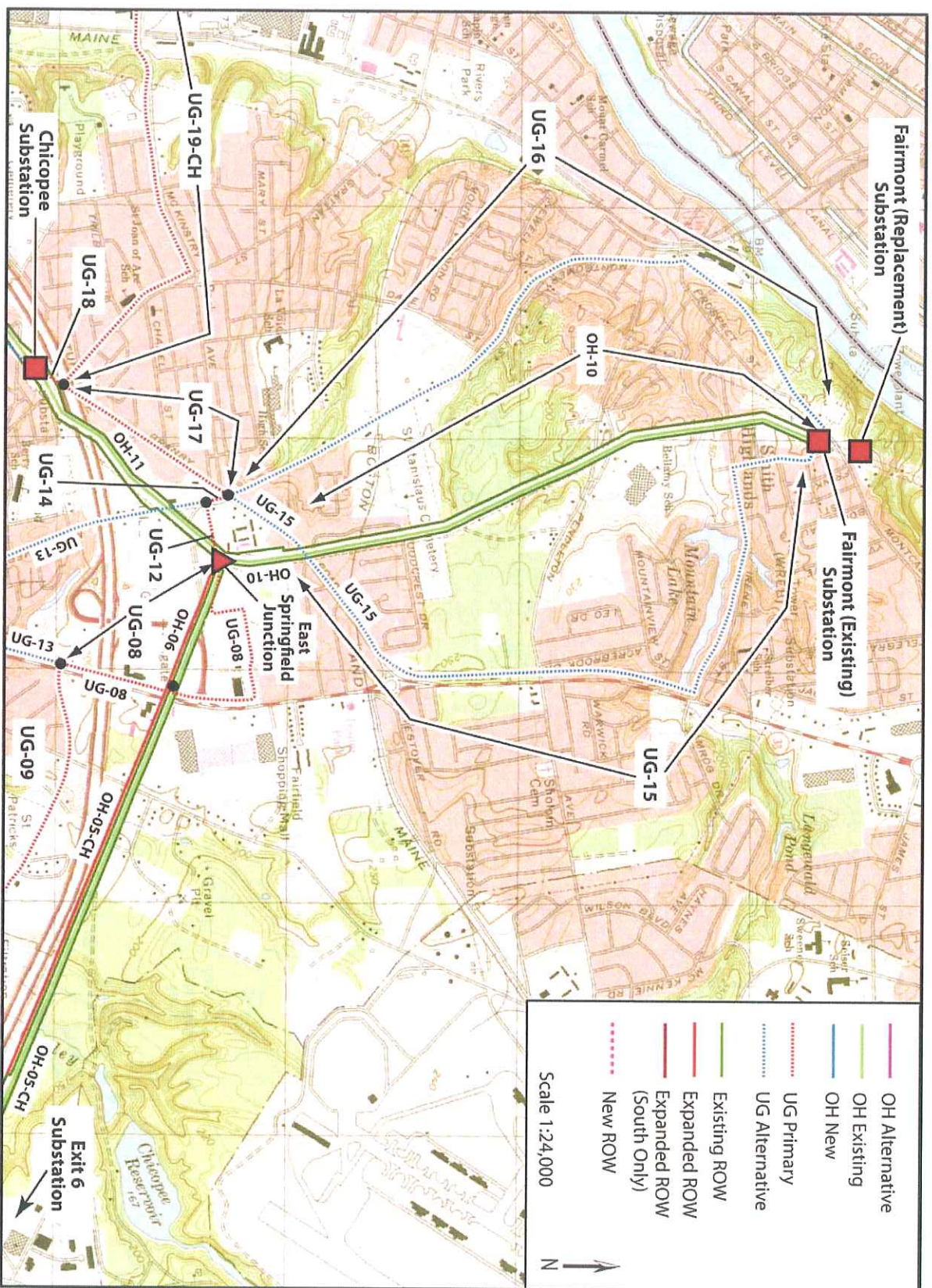


Figure 41. Chicopee OH-UG Segments – Map 2.



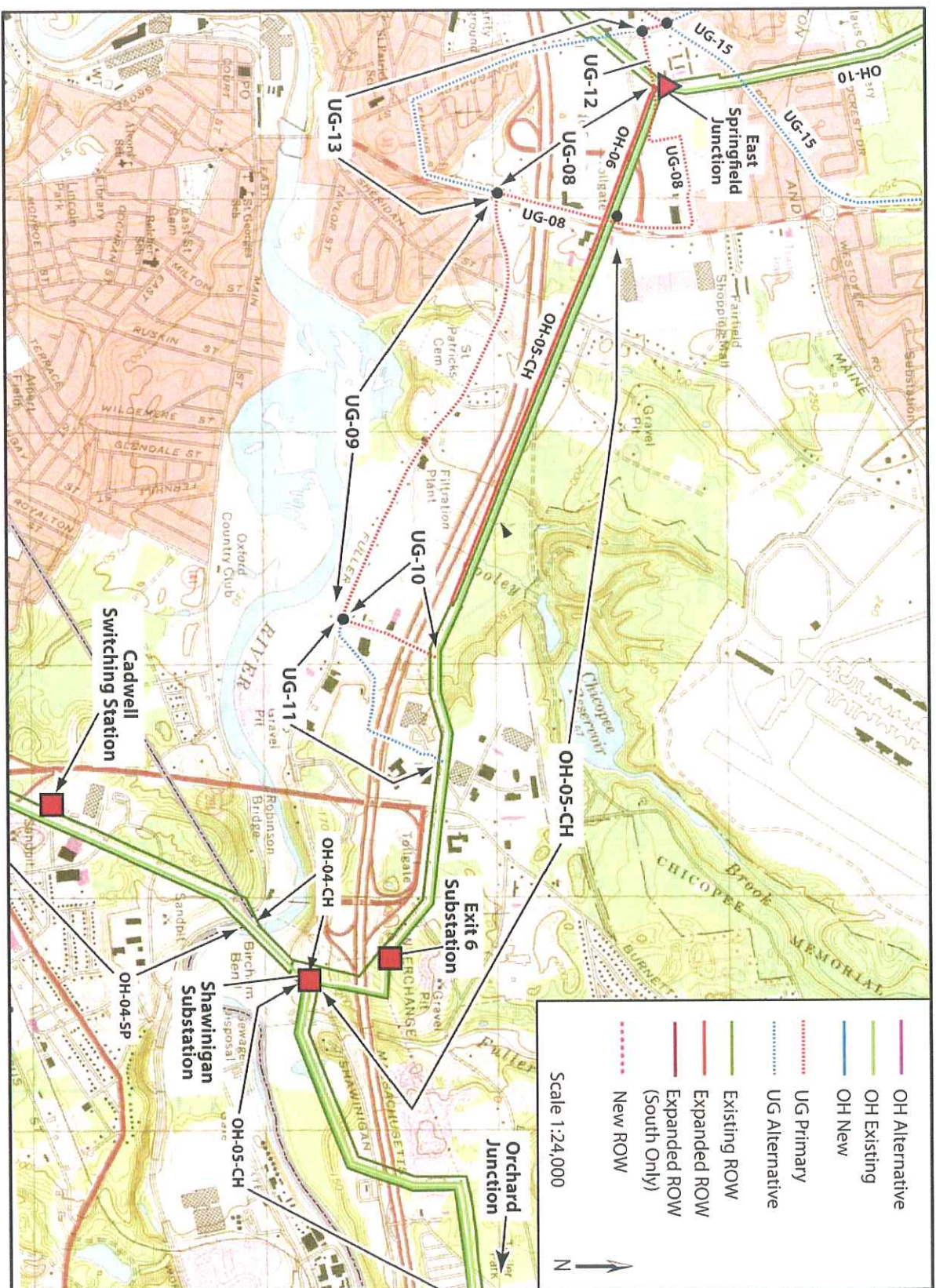


Figure 42. Chicopee OH-UG Segments – Map 3.



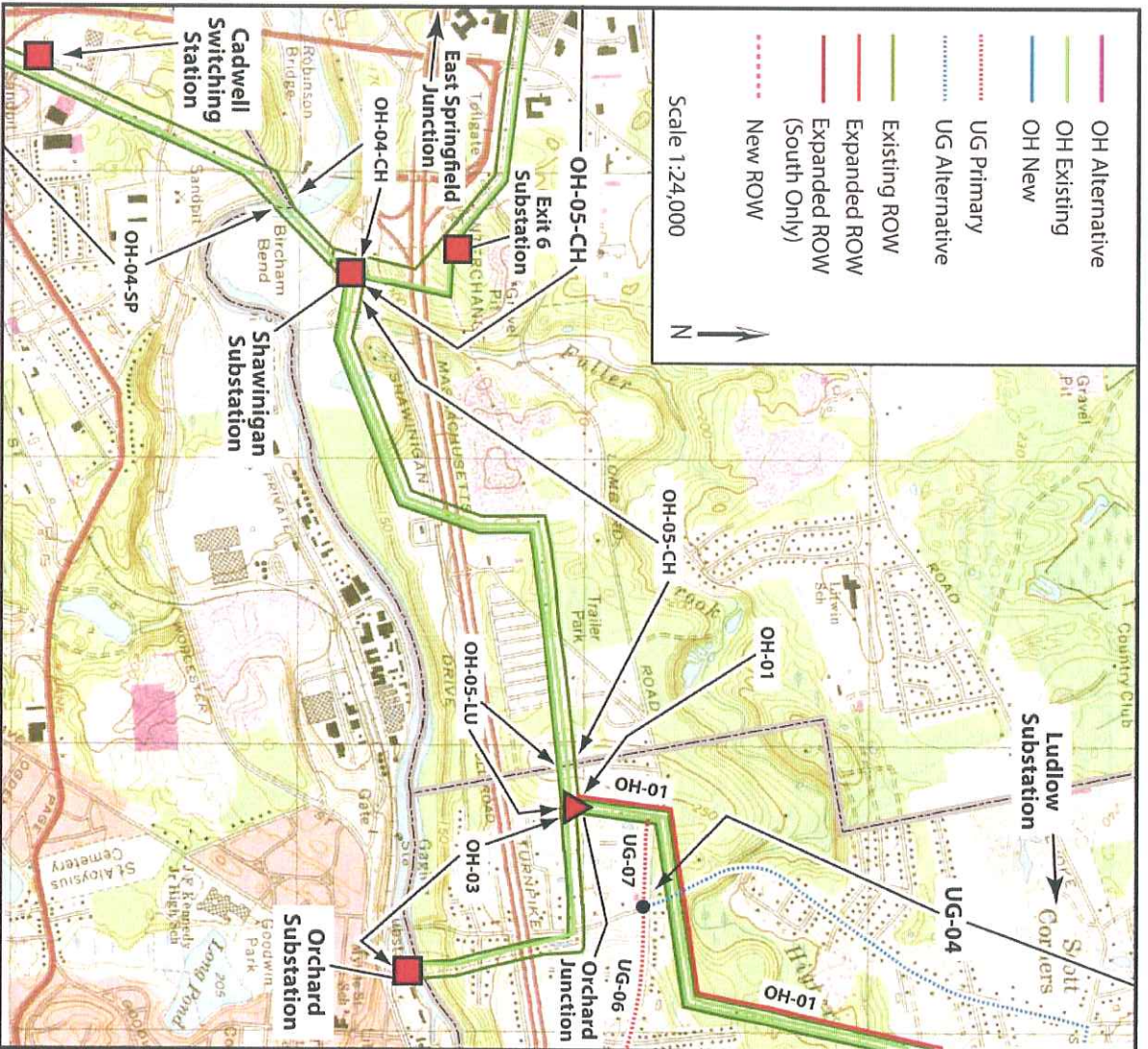


Figure 43. Chicopee OH-UG Segments – Map 4.







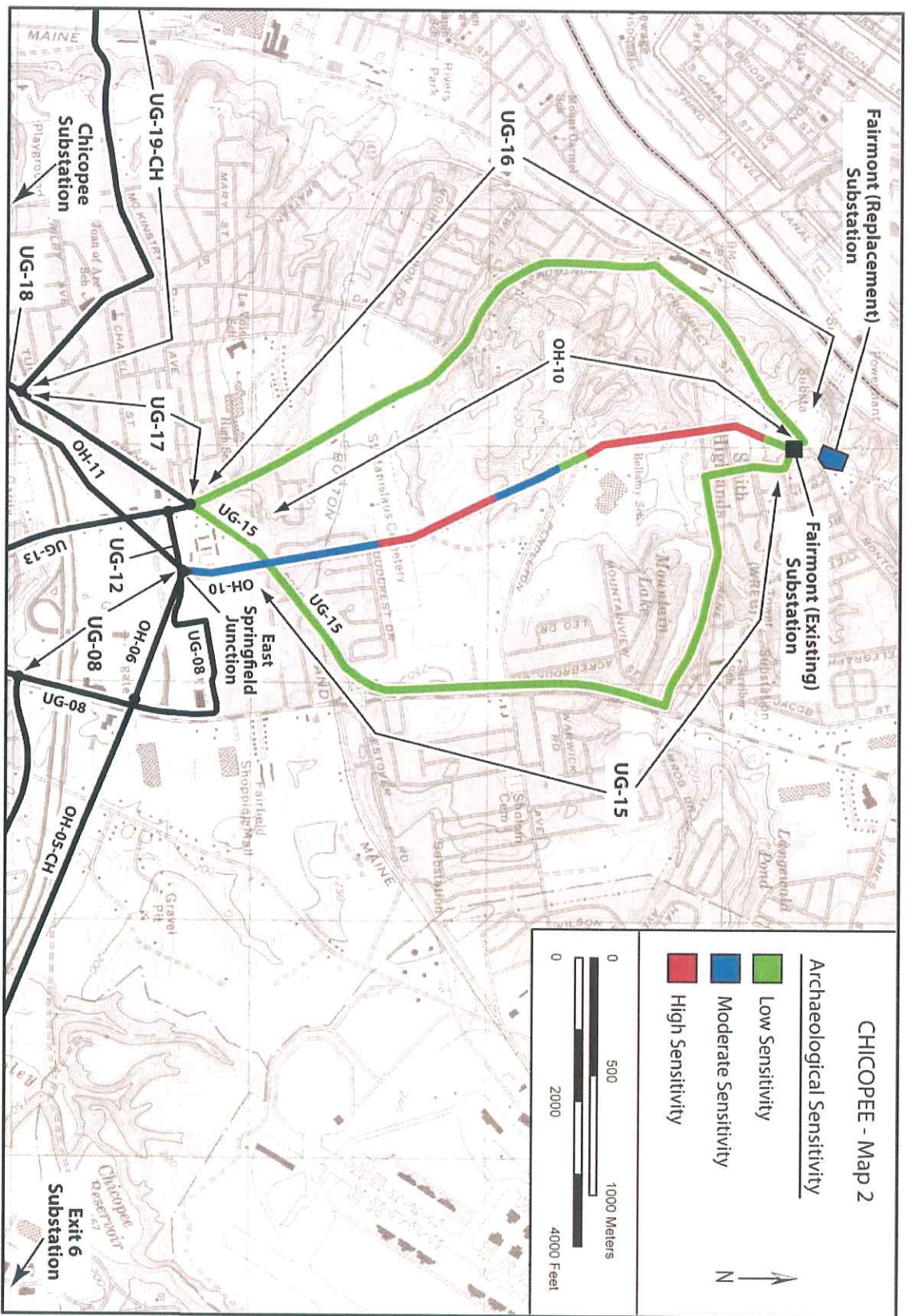


Figure 45. Chicopee OH-UG Segments Sensitivity – Map 2.



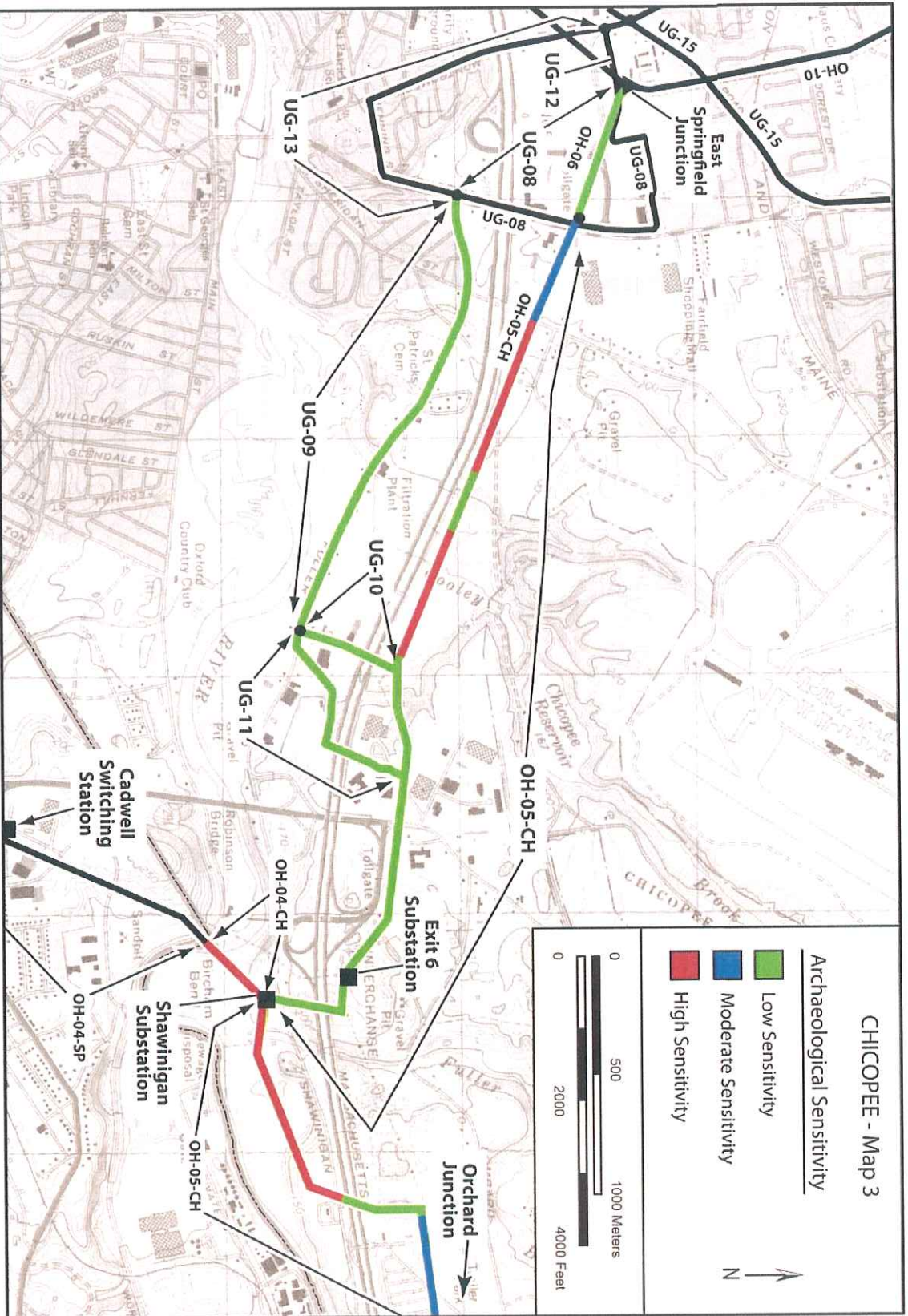


Figure 46. Chicopee OH-UG Segments Sensitivity – Map 3.







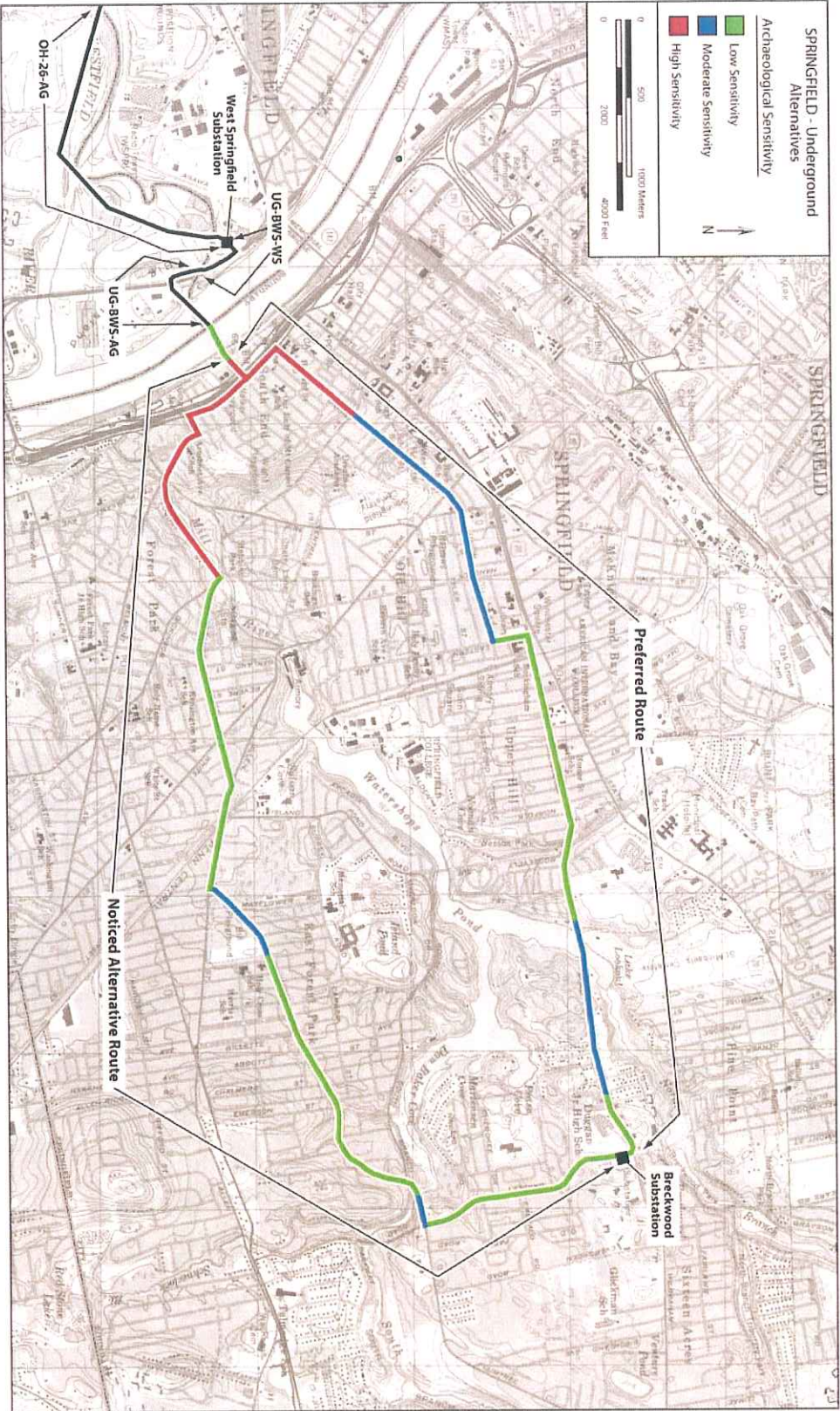


Figure 48. Springfield Underground Alternatives (West Springfield Substation to Breckwood Substation): Location and Archaeological Sensitivity Findings for the Noticed Alternative Route and the Preferred Route.



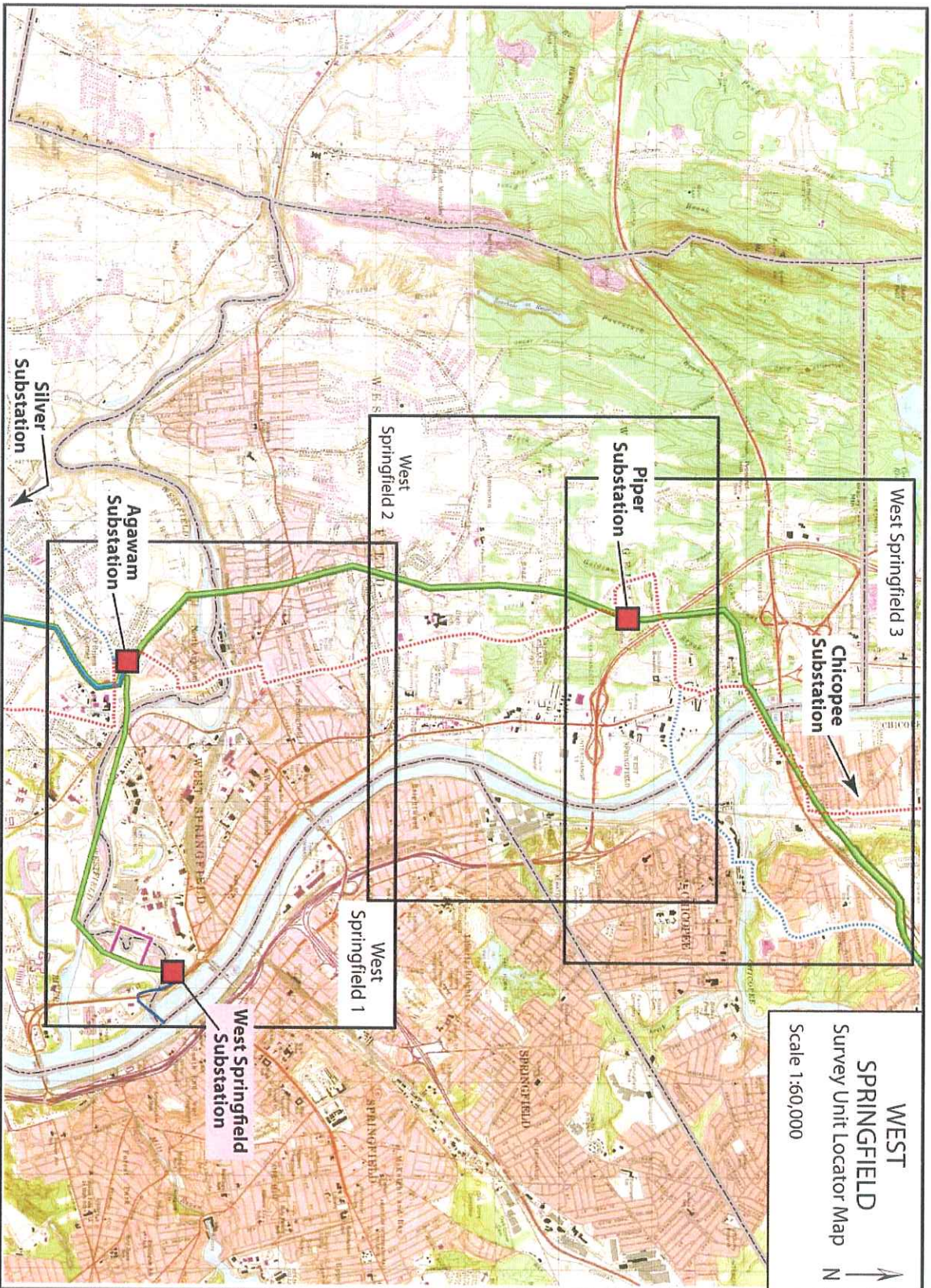


Figure 49. West Springfield OH-UG Locator Map.



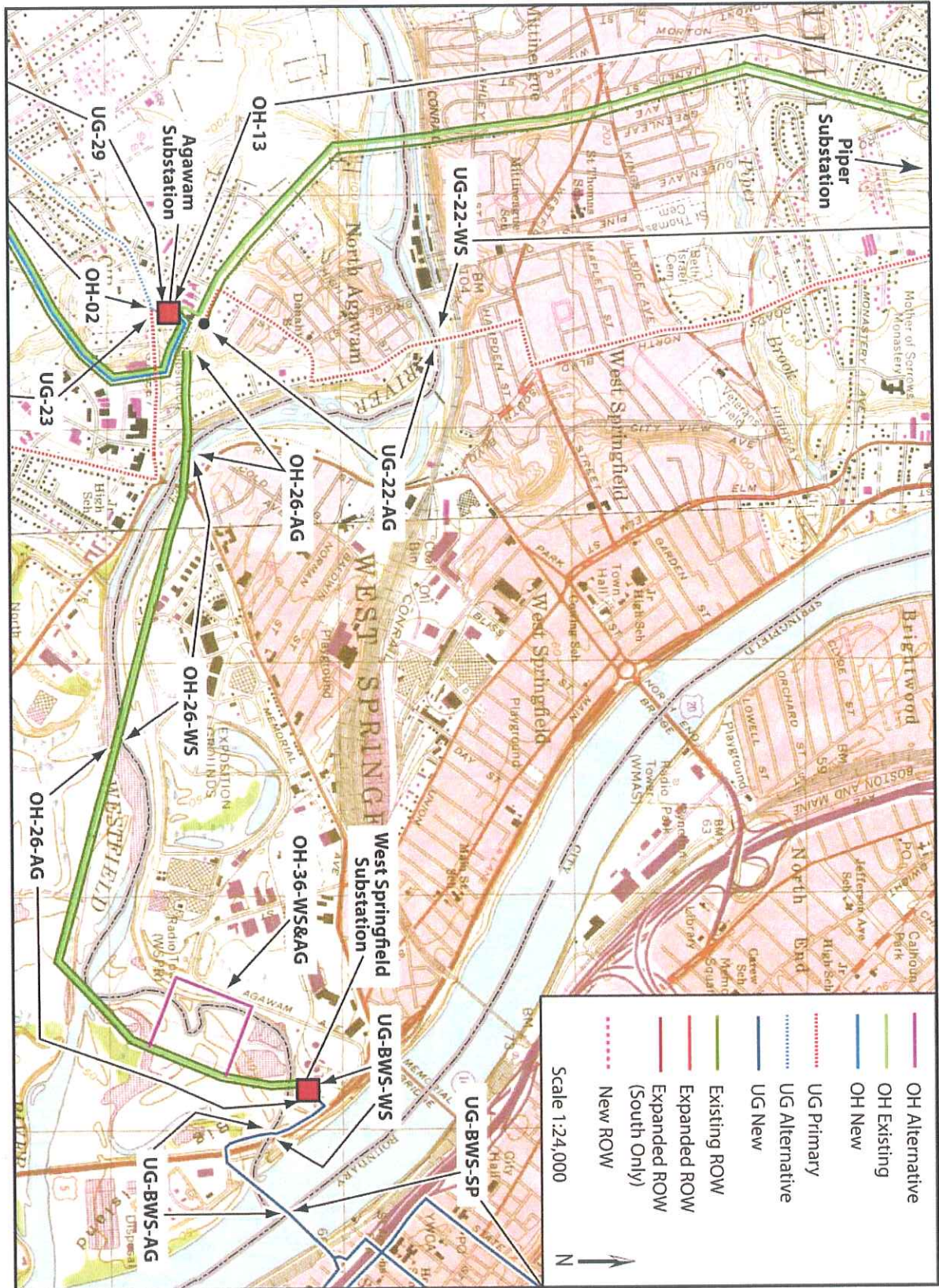


Figure 50. West Springfield OH-UG Segments – Map 1.



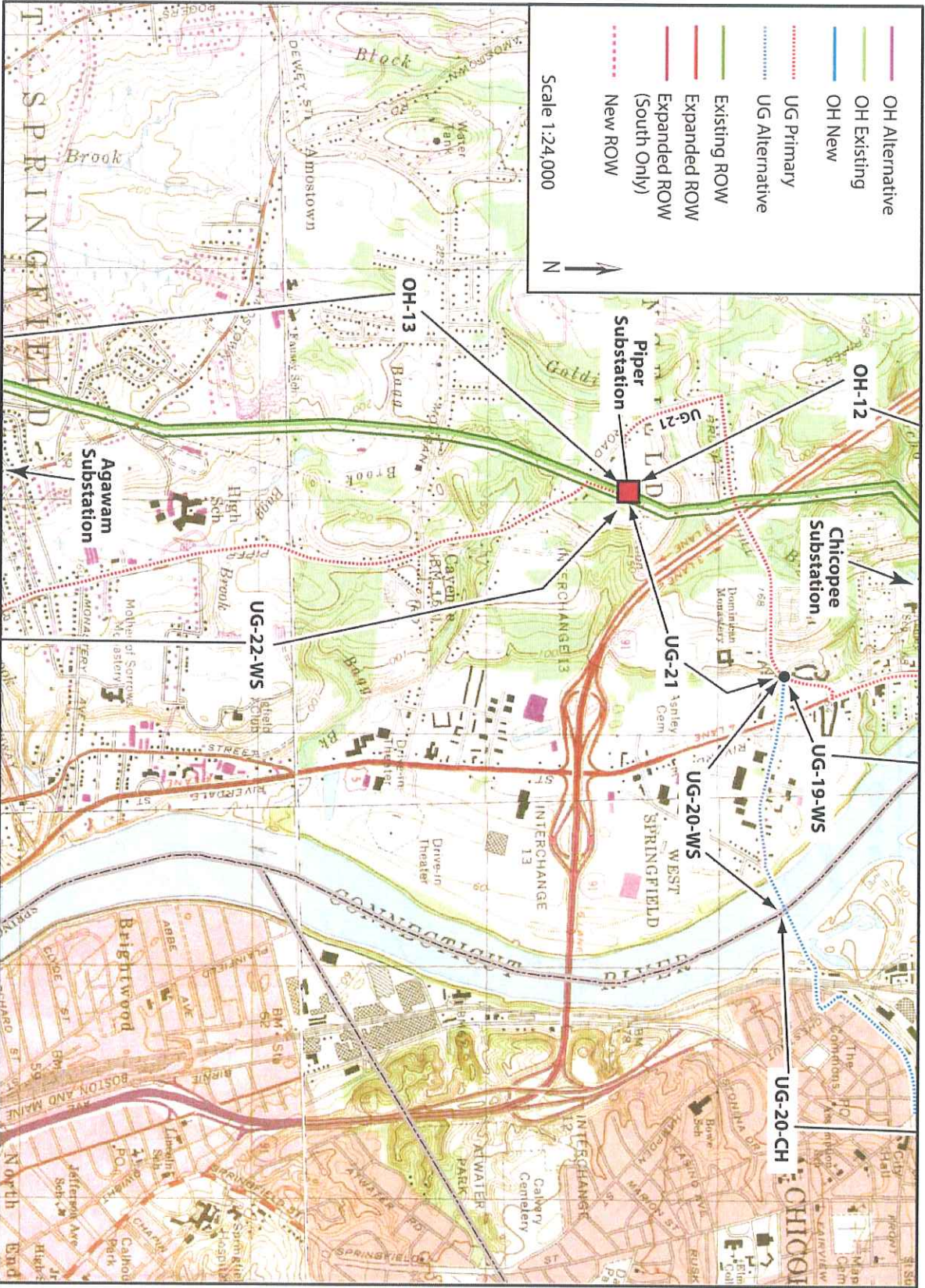


Figure 51. West Springfield OH-UG Segments – Map 2.





Figure 52. West Springfield OH-UG Segments – Map 3.



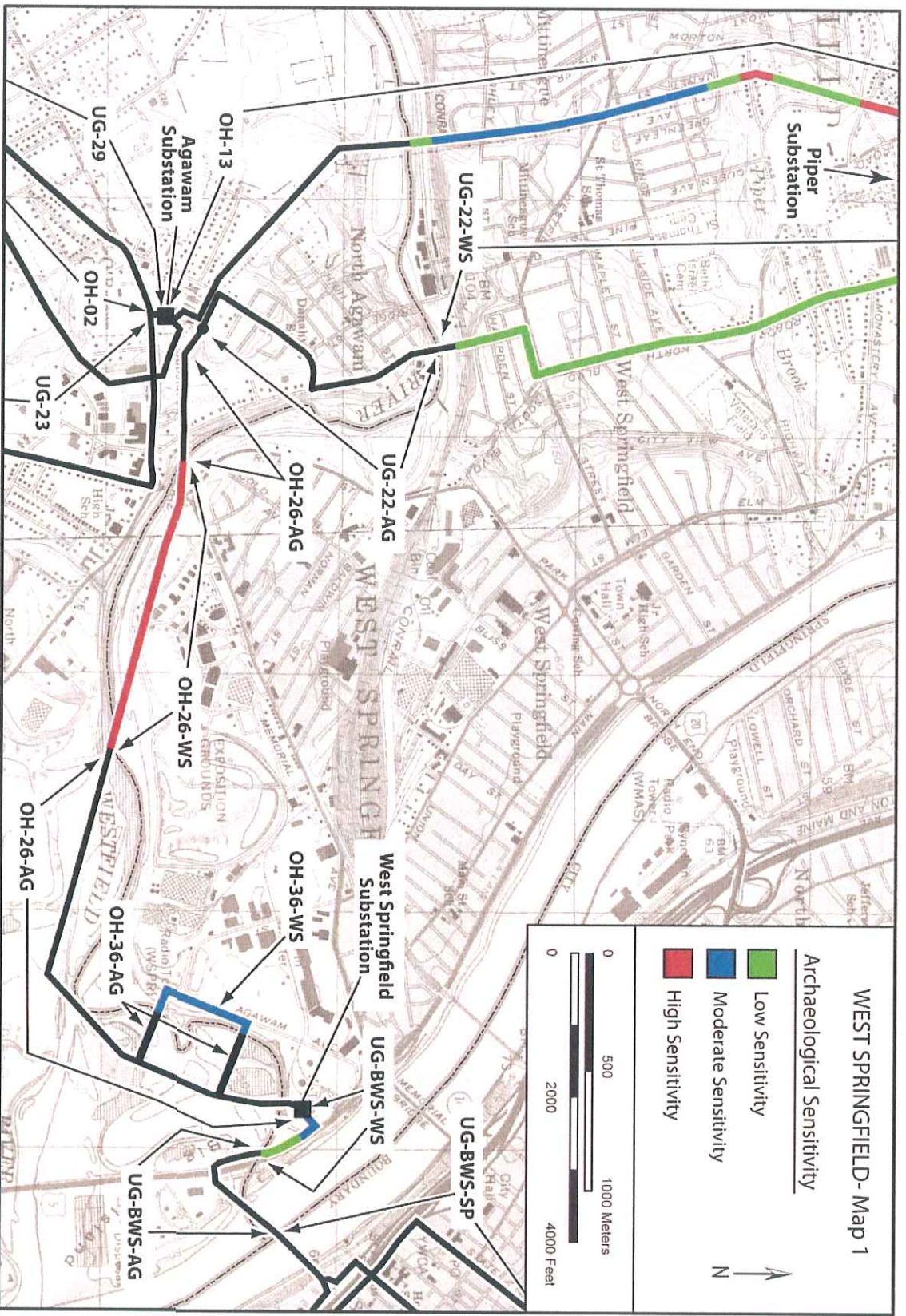


Figure 53. West Springfield OH-UG Segments Sensitivity – Map 1.



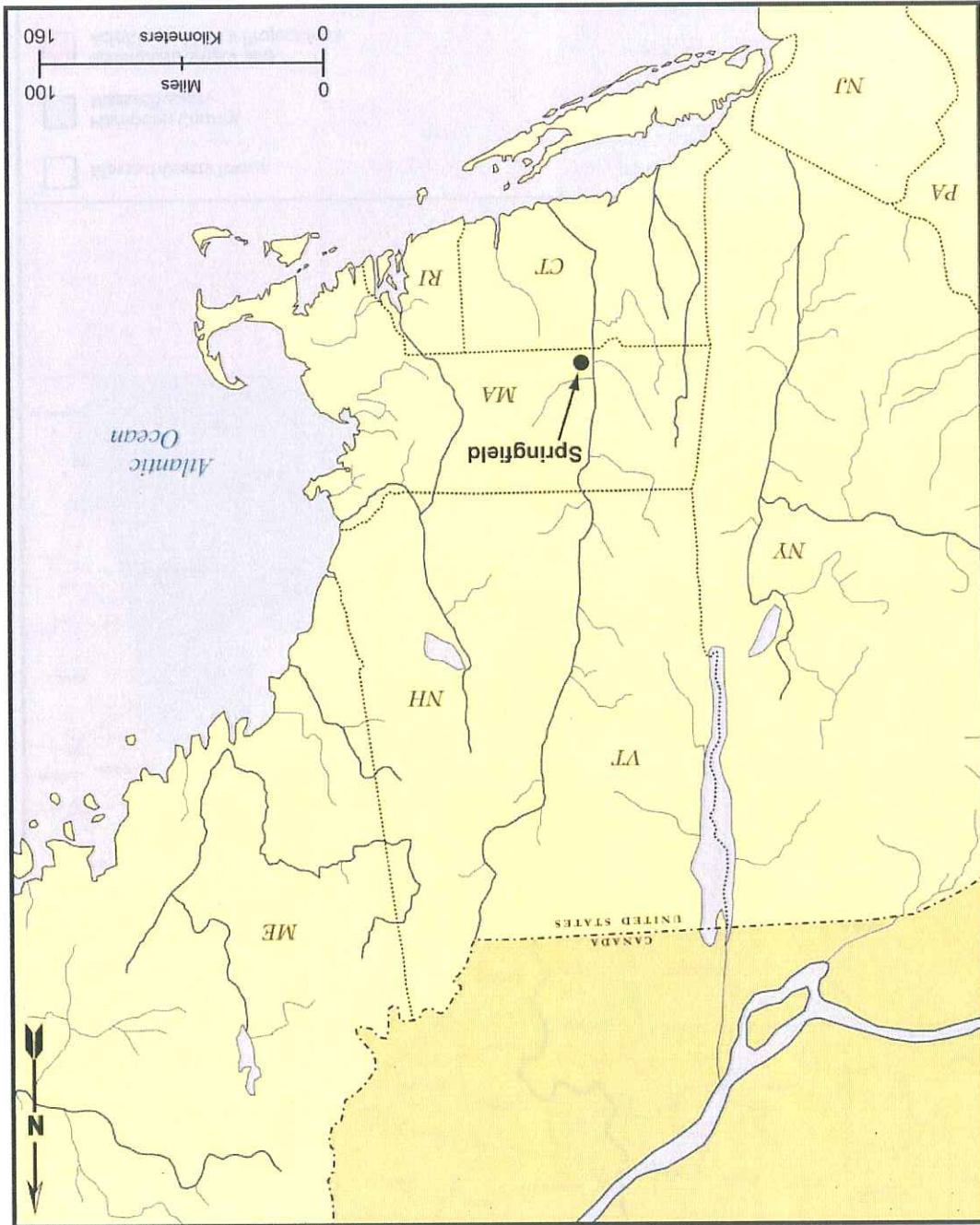


Figure 1. Project area location in the New England region.



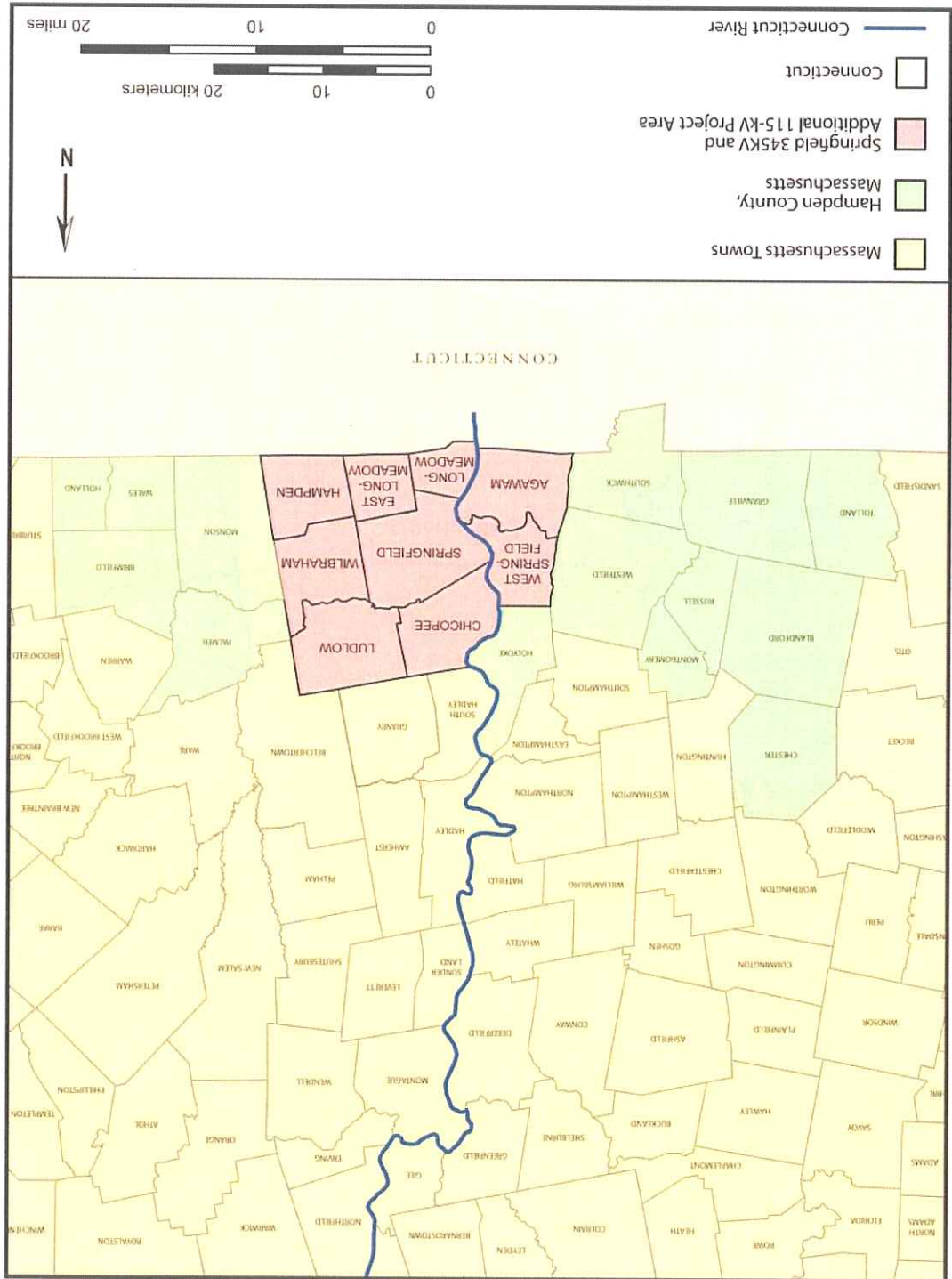


Figure 2. Project area location in the Hampden County region.



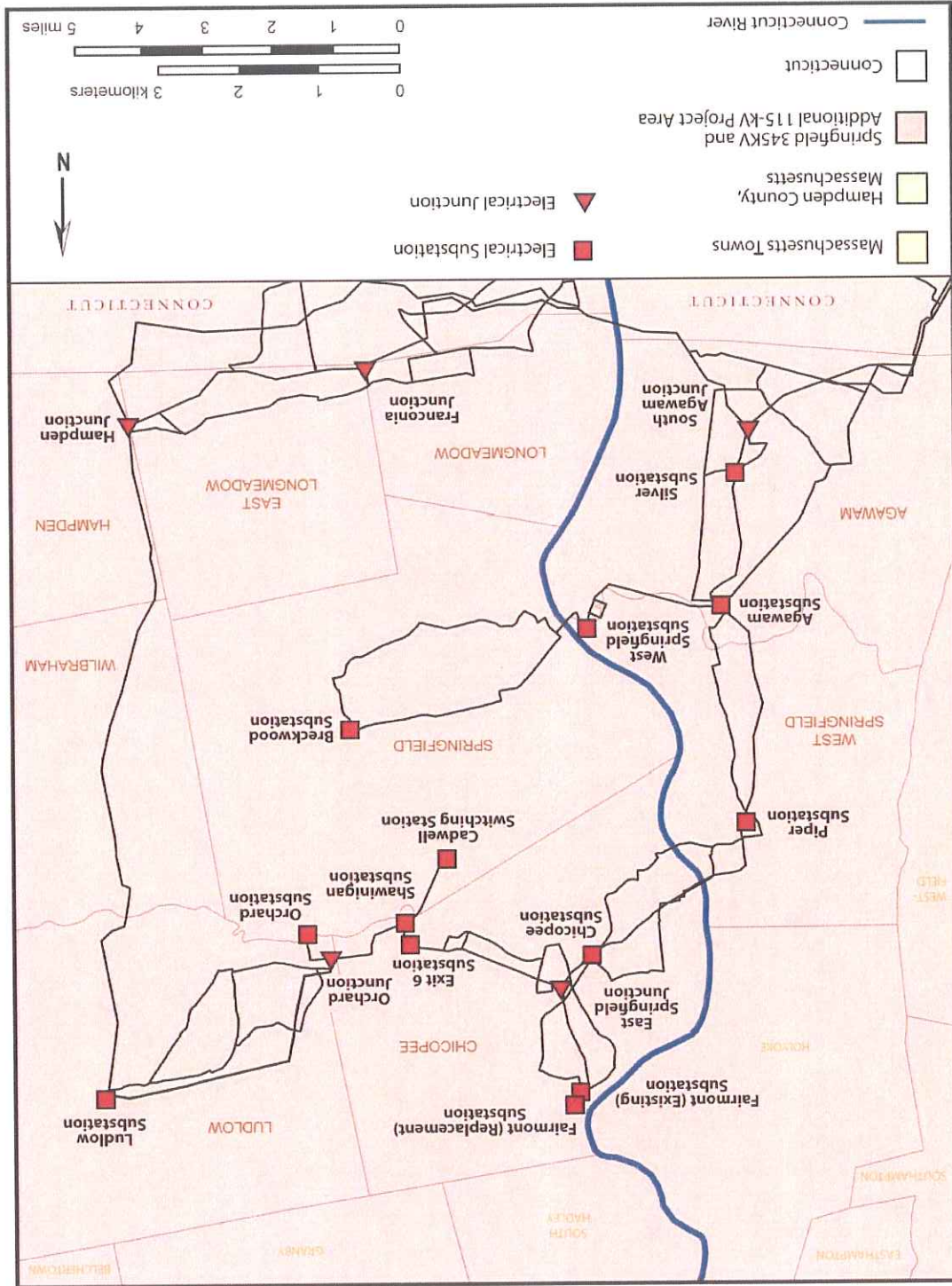


Figure 3. Locations of key points in the Greater Springfield Reliability Project.



