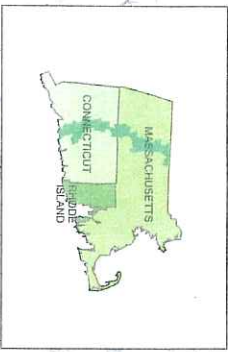
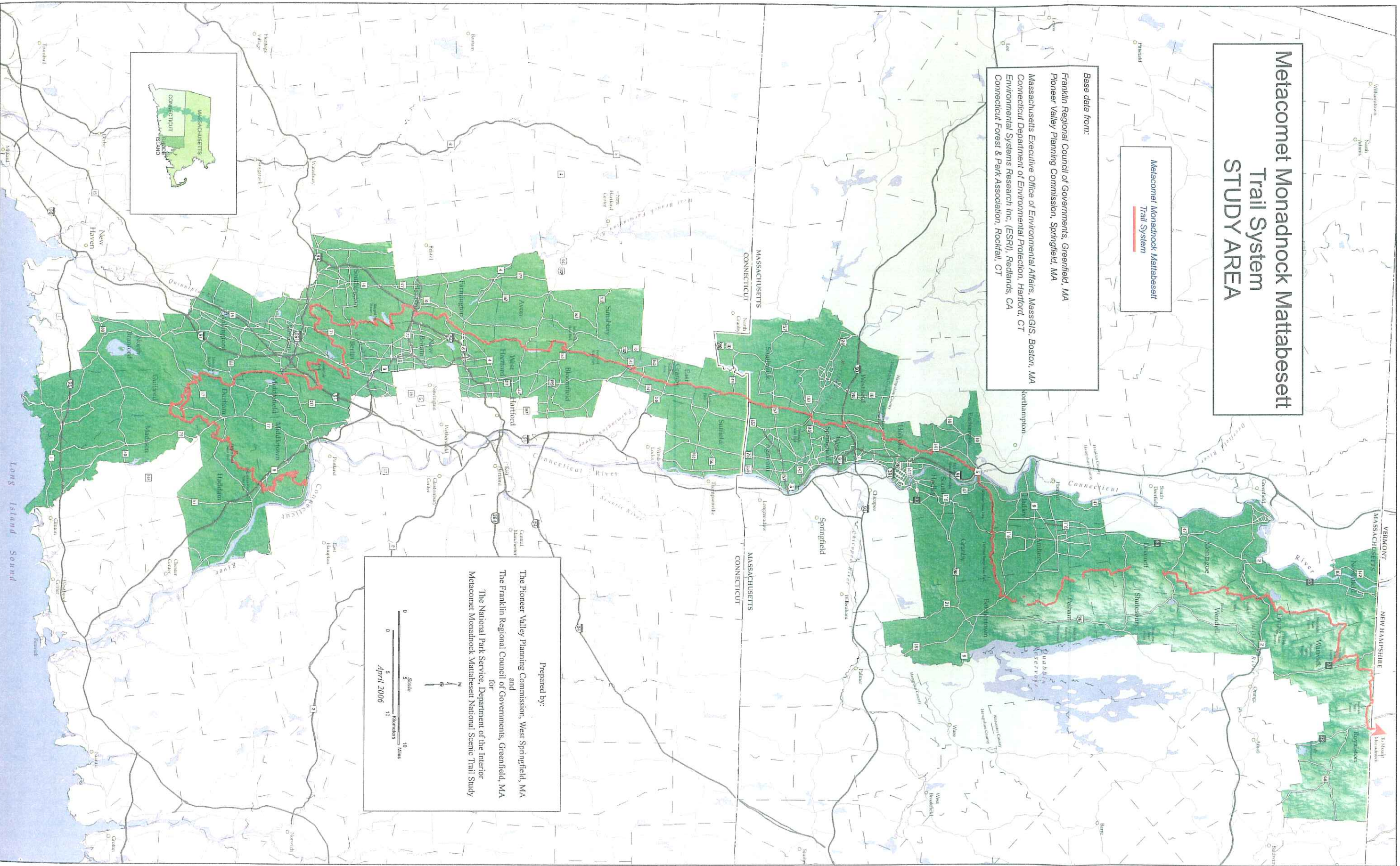
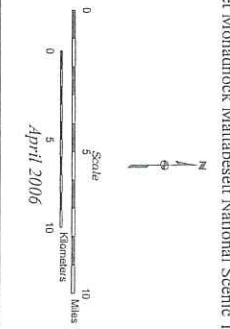


Metacomet Monadnock Mattabesett Trail System STUDY AREA

Metacomet Monadnock Mattabesett
Trail System

Base data from:
 Franklin Regional Council of Governments, Greenfield, MA
 Pioneer Valley Planning Commission, Springfield, MA
 Massachusetts Executive Office of Environmental Affairs, MassGIS, Boston, MA
 Connecticut Department of Environmental Protection, Hartford, CT
 Environmental Systems Research Inc. (ESRI), Redlands, CA
 Connecticut Forest & Park Association, Rockfall, CT

Prepared by:
 The Pioneer Valley Planning Commission, West Springfield, MA
 and
 The Franklin Regional Council of Governments, Greenfield, MA
 for
 The National Park Service, Department of the Interior
 Metacomet Monadnock Mattabesett National Scenic Trail Study



Metacomet Monadnock Mattabesett Trail System in Connecticut POINTS OF INTEREST

**Metacomet Monadnock Mattabesett
Trail System**

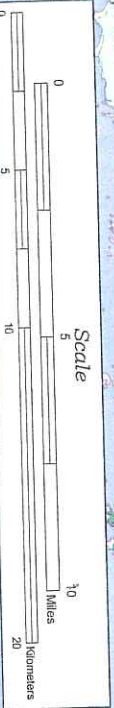
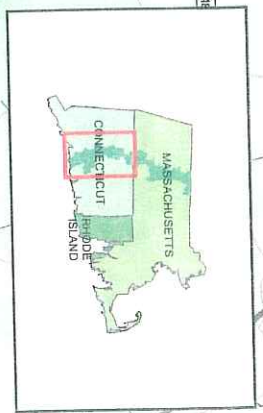
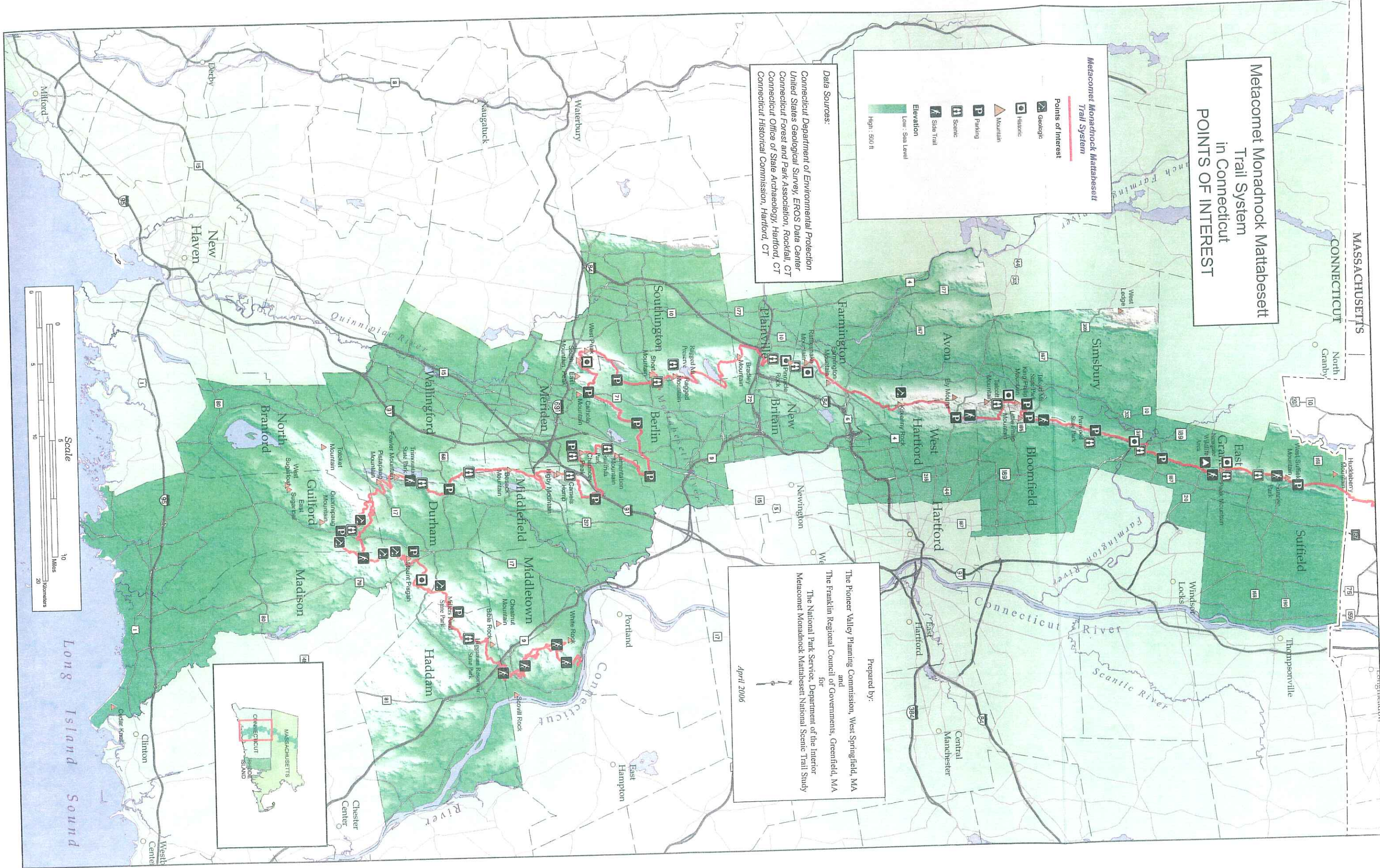
Points of Interest

- Geologic
- Historic
- Mountain
- Parking
- Scenic
- State Trail

Elevation
Low: Sea Level
High: 500 ft

Data Sources:
 Connecticut Department of Environmental Protection
 United States Geological Survey, EROS Data Center
 Connecticut Forest and Park Association, Rockfall, CT
 Connecticut Office of State Archaeology, Hartford, CT
 Connecticut Historical Commission, Hartford, CT

Prepared by:
 The Pioneer Valley Planning Commission, West Springfield, MA
 and
 The Franklin Regional Council of Governments, Greenfield, MA
 for
 The National Park Service, Department of the Interior
 Metacomet Monadnock Mattabesett National Scenic Trail Study
 April 2006



Metacomet Monadnock Mattabesett Trail System in Massachusetts POINTS OF INTEREST

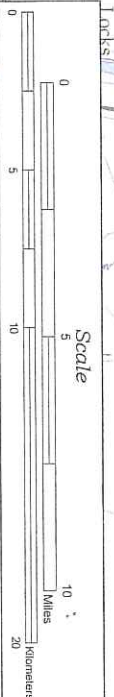
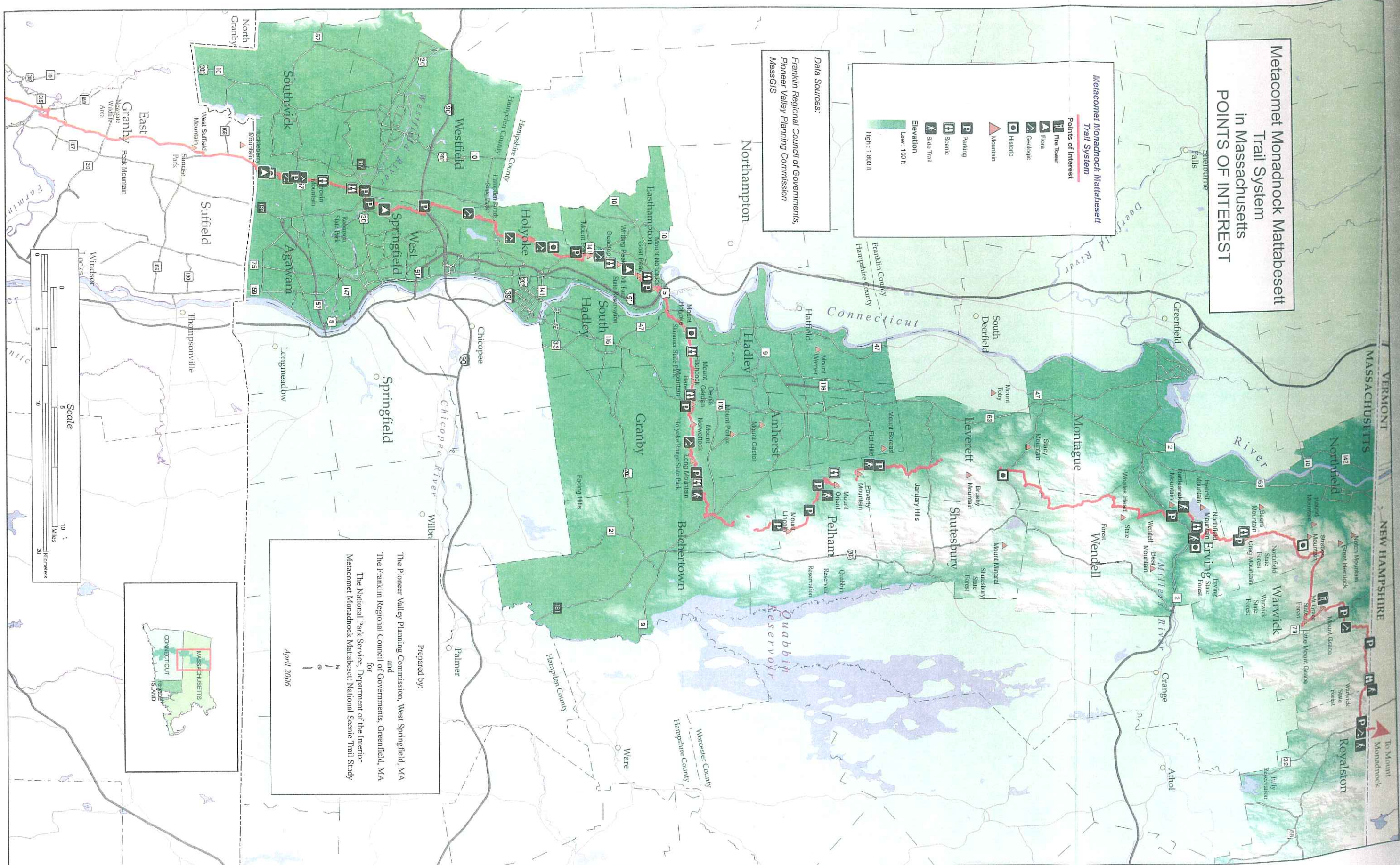
Metacomet Monadnock Mattabesett Trail System

Points of Interest

- Fire Tower
- Flora
- Geologic
- Historic
- Mountain
- Parking
- Scenic
- Side Trail
- Elevation

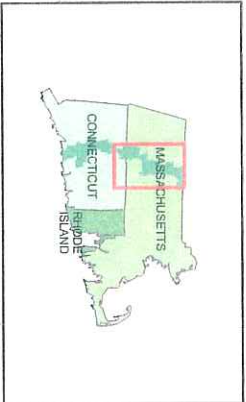
High: 1,800 ft
Low: 100 ft

Data Sources:
Franklin Regional Council of Governments,
Pioneer Valley Planning Commission
MassGIS



Prepared by:
The Pioneer Valley Planning Commission, West Springfield, MA
and
The Franklin Regional Council of Governments, Greenfield, MA
for
The National Park Service, Department of the Interior
Metacomet Monadnock Mattabesett National Scenic Trail Study

April 2006



**Metacomet Monadnock Mattabesett
Trail System
in Connecticut
GENERALIZED LAND USE**

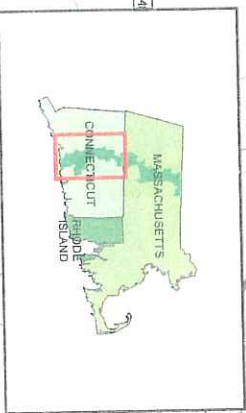
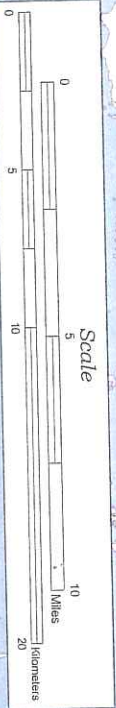
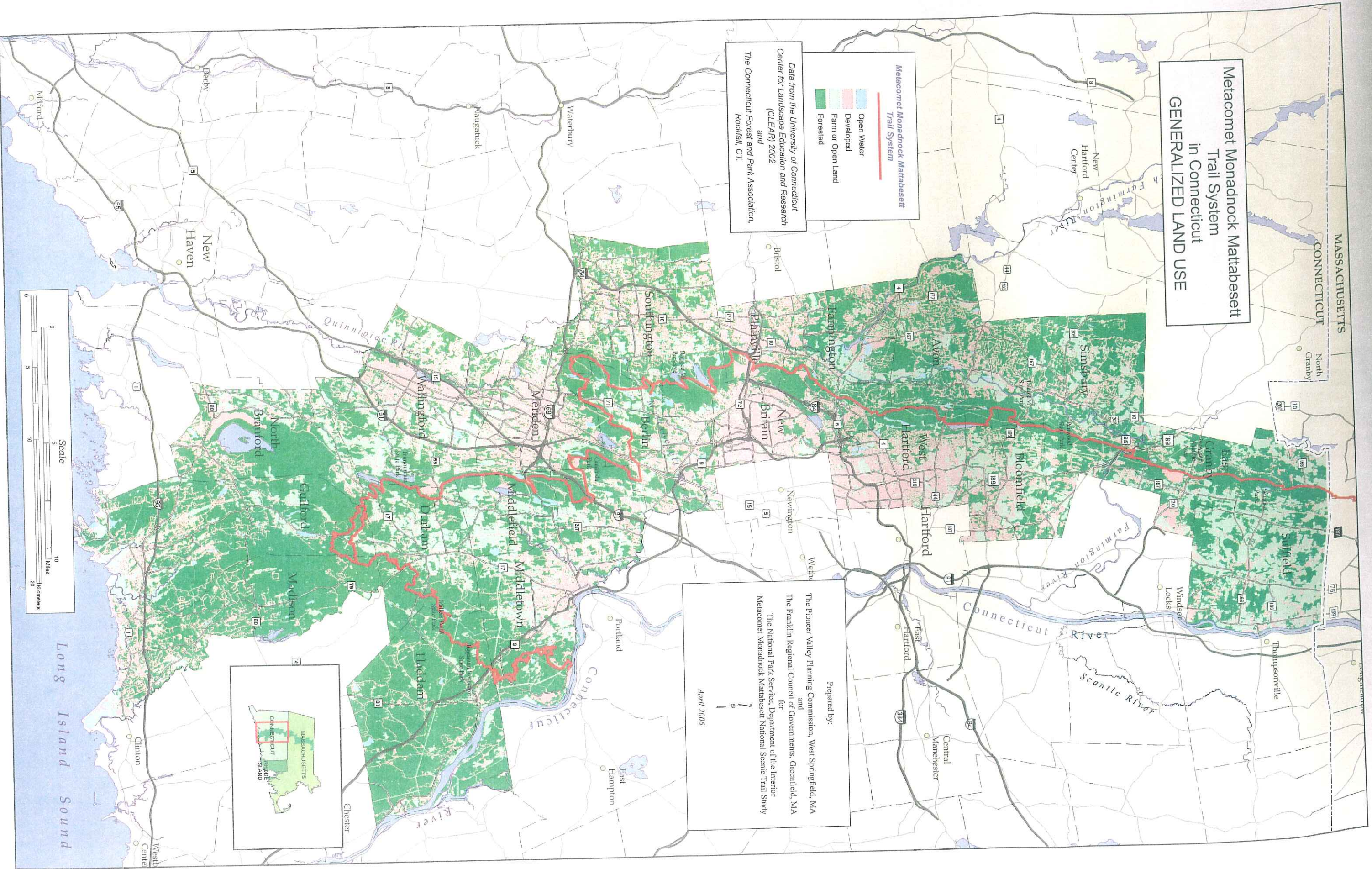
**Metacomet Monadnock Mattabesett
Trail System**

- Trail System
- Open Water
- Developed
- Farm or Open Land
- Forested

Data from the University of Connecticut
Center for Landscape Education and Research
(CLEAR) 2002
and
The Connecticut Forest and Park Association,
Rockfall, CT.






Prepared by:
The Pioneer Valley Planning Commission, West Springfield, MA
and
The Franklin Regional Council of Governments, Greenfield, MA
for
The National Park Service, Department of the Interior
Metacomet Monadnock Mattabesett National Scenic Trail Study

April 2006

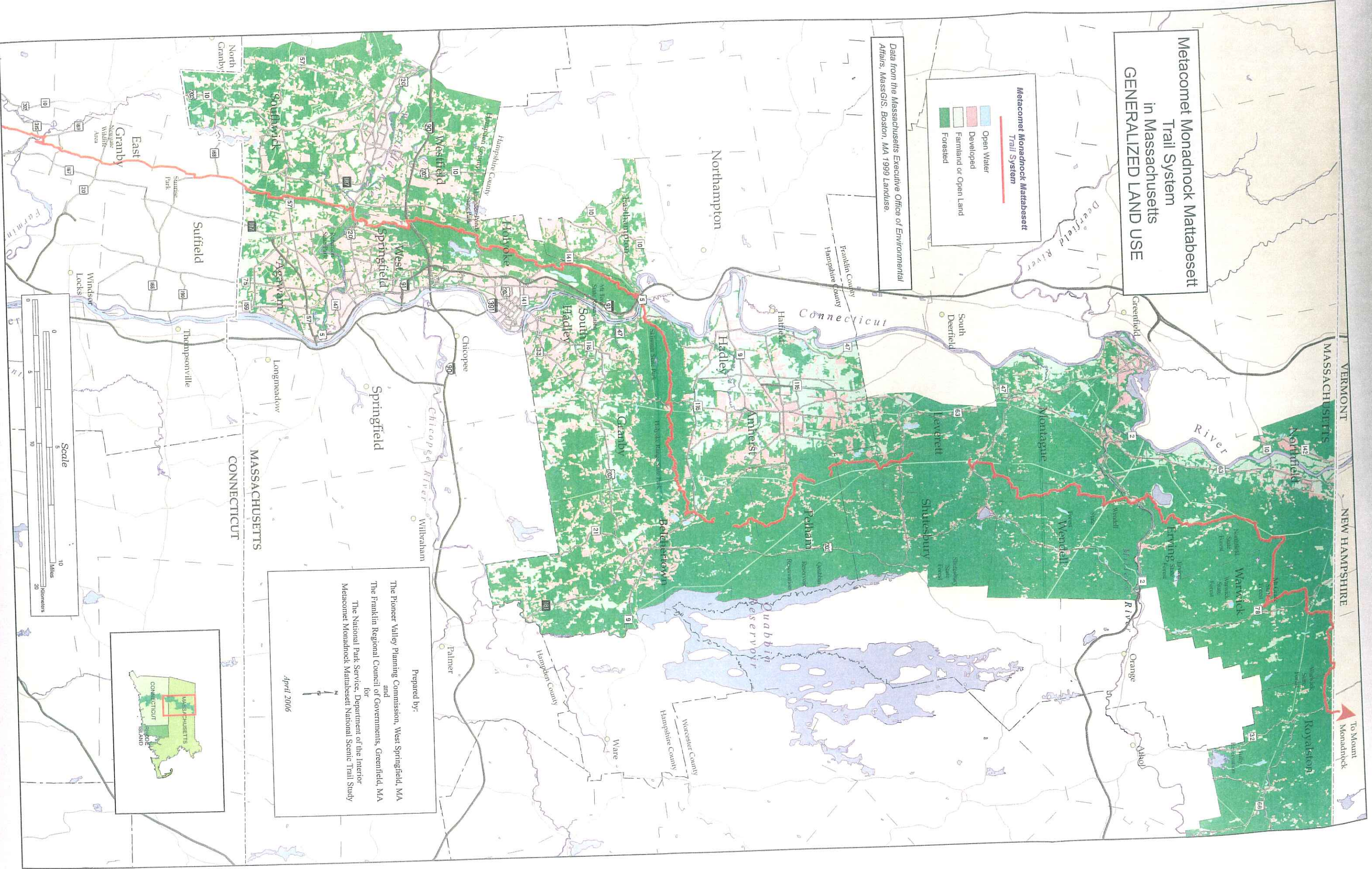


**Metacomet Monadnock Mattabesett
Trail System
in Massachusetts
GENERALIZED LAND USE**

**Metacomet Monadnock Mattabesett
Trail System**

-  Trail System
-  Open Water
-  Developed
-  Farmland or Open Land
-  Forested

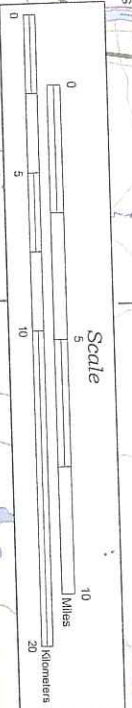
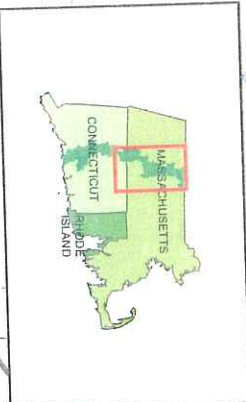
Data from the Massachusetts Executive Office of Environmental Affairs, MassGIS, Boston, MA 1999 Landuse.



MASSACHUSETTS
CONNECTICUT

VERMONT
NEW HAMPSHIRE

Prepared by:
The Pioneer Valley Planning Commission, West Springfield, MA
and
The Franklin Regional Council of Governments, Greenfield, MA
for
The National Park Service, Department of the Interior
Metacomet Monadnock Mattabesett National Scenic Trail Study
April 2006



**Metacomet Monadnock Mattabesett
Trail System
in Connecticut
NATURAL HABITATS**

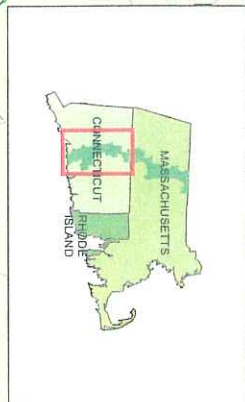
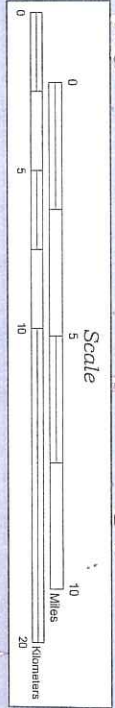
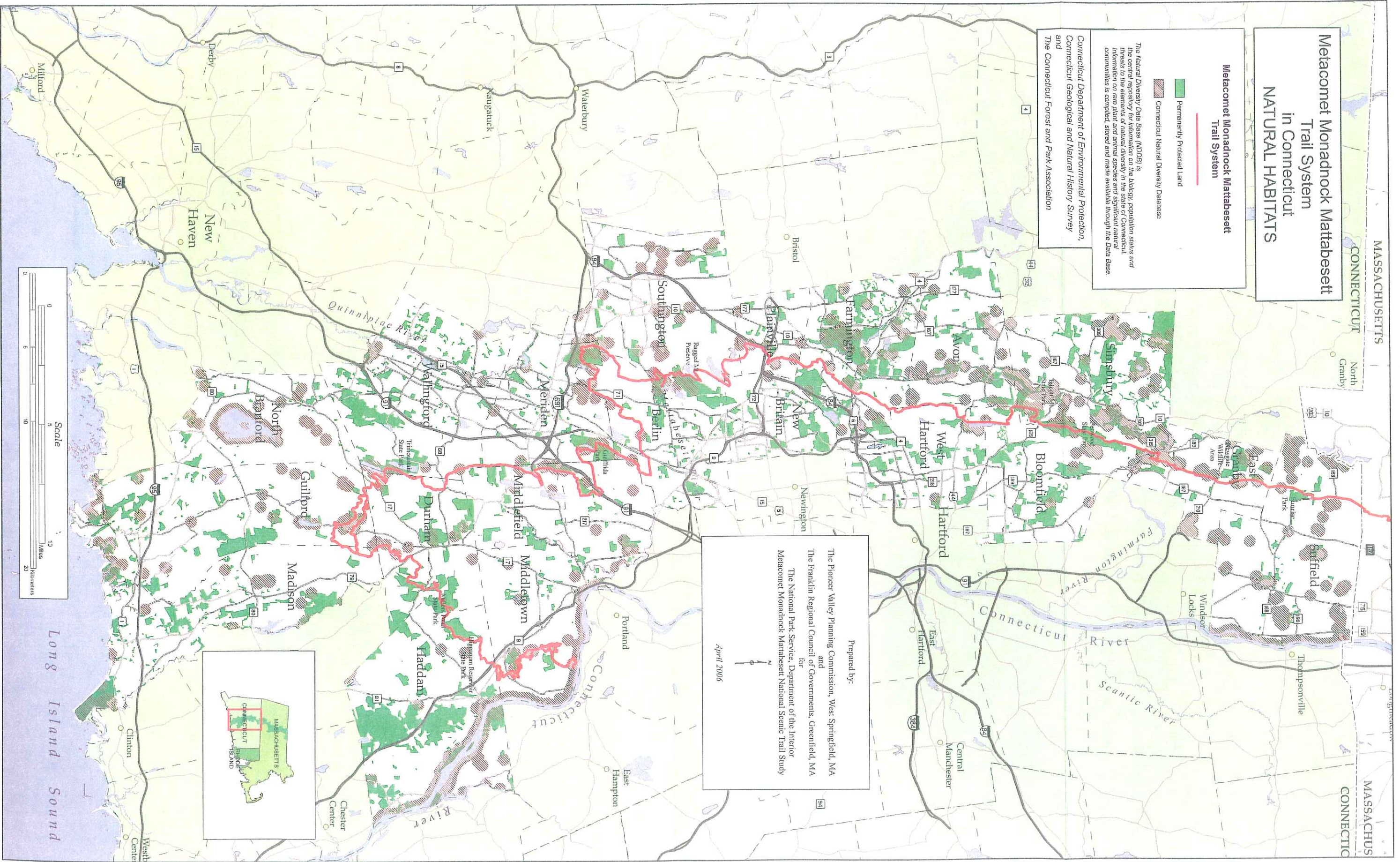
**Metacomet Monadnock Mattabesett
Trail System**

- Permanently Protected Land
- Connecticut Natural Diversity Database

The Natural Diversity Data Base (NDDDB) is the basis for the determination of natural diversity in the state of Connecticut. Information on rare plant and animal species and significant natural communities is compiled, stored and made available through the Data Base.

Connecticut Department of Environmental Protection,
Connecticut Geological and Natural History Survey
and
The Connecticut Forest and Park Association

Prepared by:
The Pioneer Valley Planning Commission, West Springfield, MA
and
The Franklin Regional Council of Governments, Greenfield, MA
for
The National Park Service, Department of the Interior
Metacomet Monadnock Mattabesett National Scenic Trail Study
April 2006



Metacommet Monadnock Mattabesett Trail System in Massachusetts NATURAL HABITATS

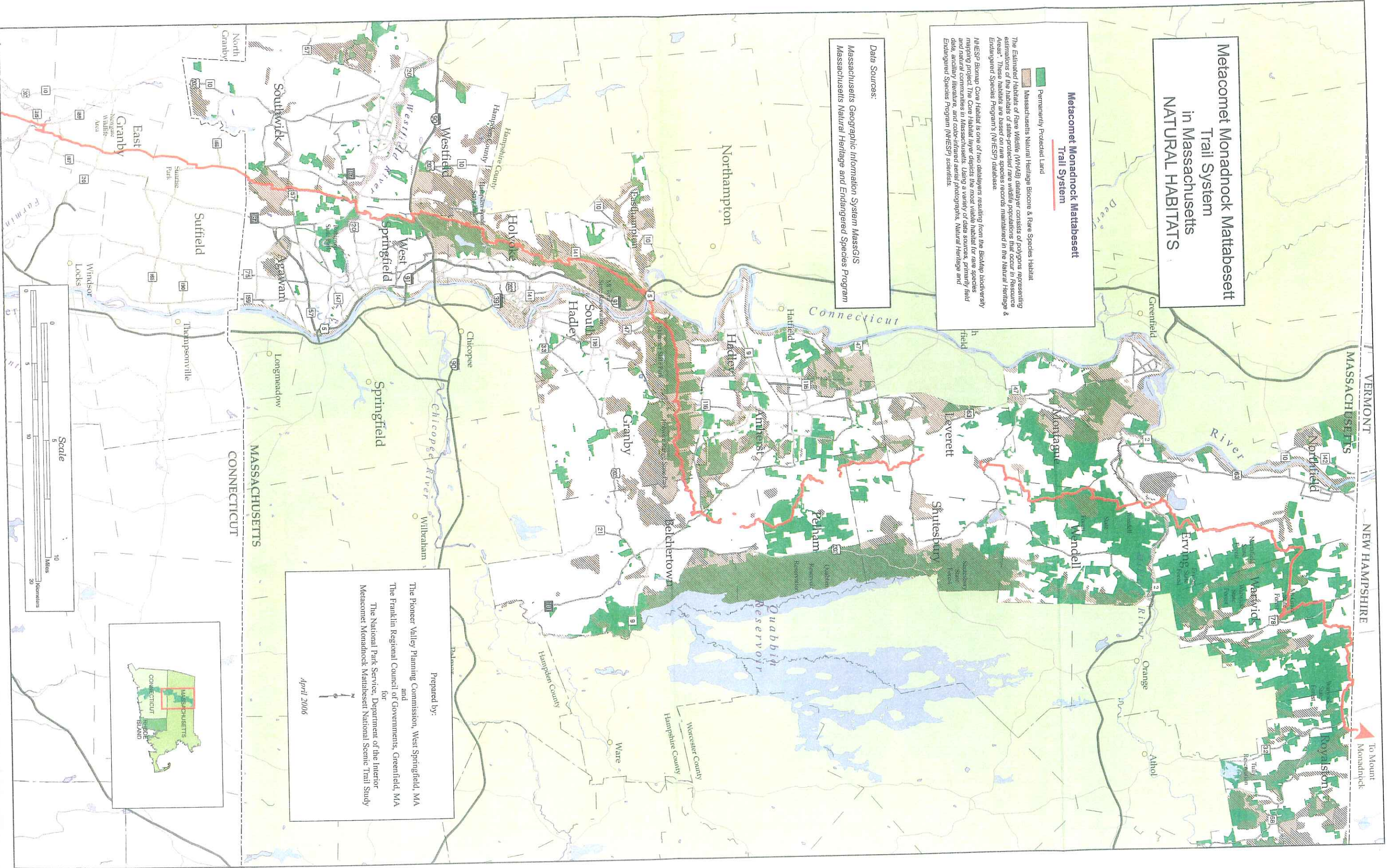
Metacommet Monadnock Mattabesett Trail System

- Massachusetts Natural Heritage Biotope & Rare Species Habitat
- Permanently Protected Land

The Estimated Habitats of Rare Wildlife (WHAB) datalayer consists of polygons representing estimations of the habitats of state-protected rare wildlife populations that occur in "Resource Areas". These habitats are based on rare species records maintained in the Natural Heritage & Endangered Species Program's (NHESP) database.

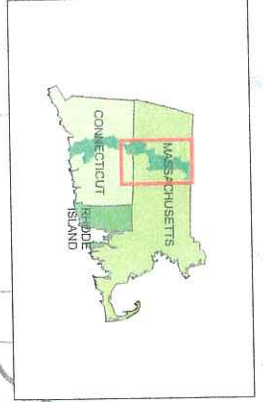
NHESP Biotope Core Habitat is one of two datalayers resulting from the Biotope biodiversity mapping project. The Core Habitat layer depicts the most viable habitat for rare species and natural communities in Massachusetts. Using a variety of data sources, field data, ancillary literature, and color-infrared aerial photographs, Natural Heritage and Endangered Species Program (NHESP) scientists:

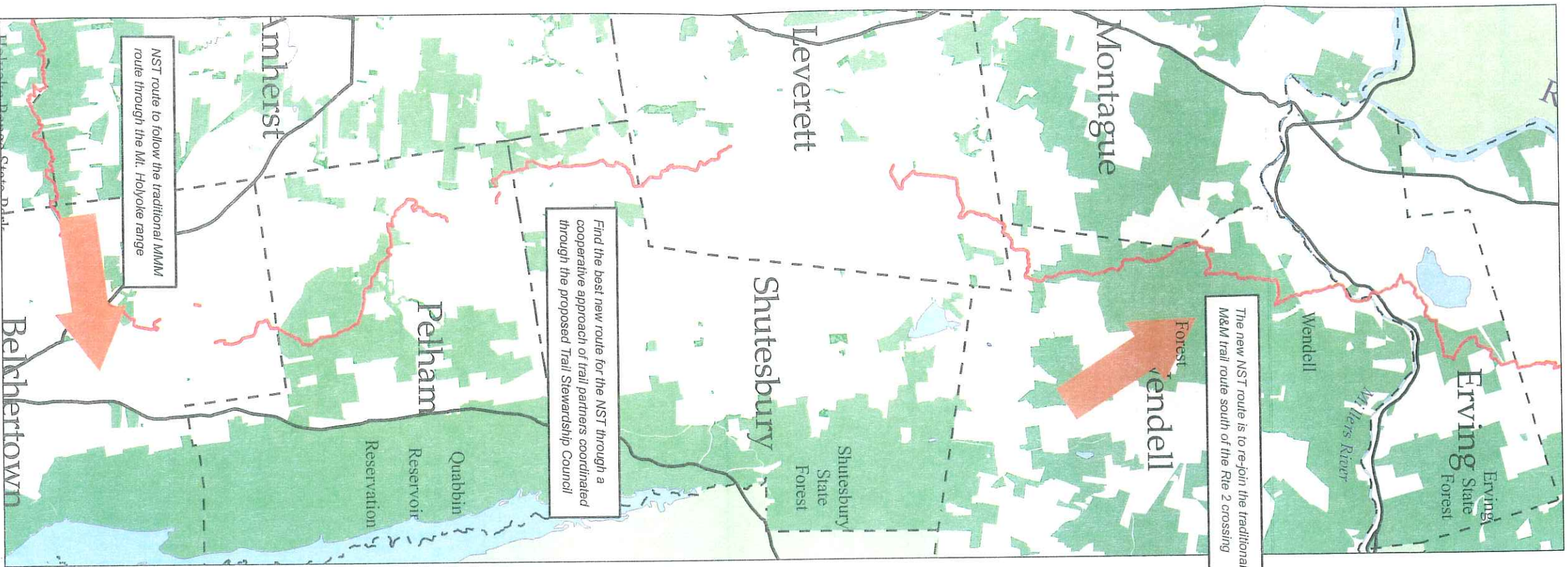
Data Sources:
Massachusetts Geographic Information System MassGIS
Massachusetts Natural Heritage and Endangered Species Program



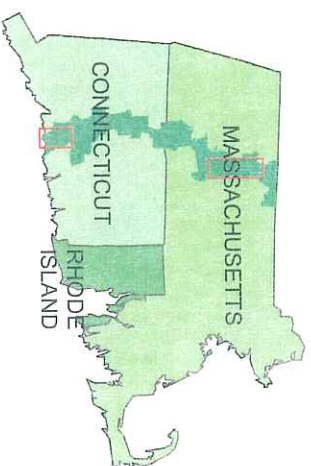
Prepared by:
The Pioneer Valley Planning Commission, West Springfield, MA
and
The Franklin Regional Council of Governments, Greenfield, MA
for
The National Park Service, Department of the Interior
Metacommet Monadnock Mattabesett National Scenic Trail Study

April 2006





Massachusetts Proposed Alternate Routing



**Extension and Alternate Routes
Proposed as part of
National Scenic Trail Designation**

- Existing M M M Trail System
- - - Guilford CT Trail Extension
- Protected Land
- ▶ Massachusetts Alternative Route



Guilford, Connecticut Trail Extension

