

**THE CONNECTICUT VALLEY ELECTRIC TRANSMISSION
RELIABILITY PROJECTS**

APPLICATION TO THE

CONNECTICUT SITING COUNCIL

**FOR CERTIFICATES OF ENVIRONMENTAL COMPATIBILITY AND PUBLIC NEED
FOR**

THE CONNECTICUT PORTION

OF THE GREATER SPRINGFIELD RELIABILITY PROJECT

AND FOR

**THE MANCHESTER TO MEEKVILLE JUNCTION CIRCUIT
SEPARATION PROJECT**

BY

THE CONNECTICUT LIGHT & POWER COMPANY

VOLUME 7 of 11

OCTOBER 2008



**Connecticut
Light & Power**

The Northeast Utilities System



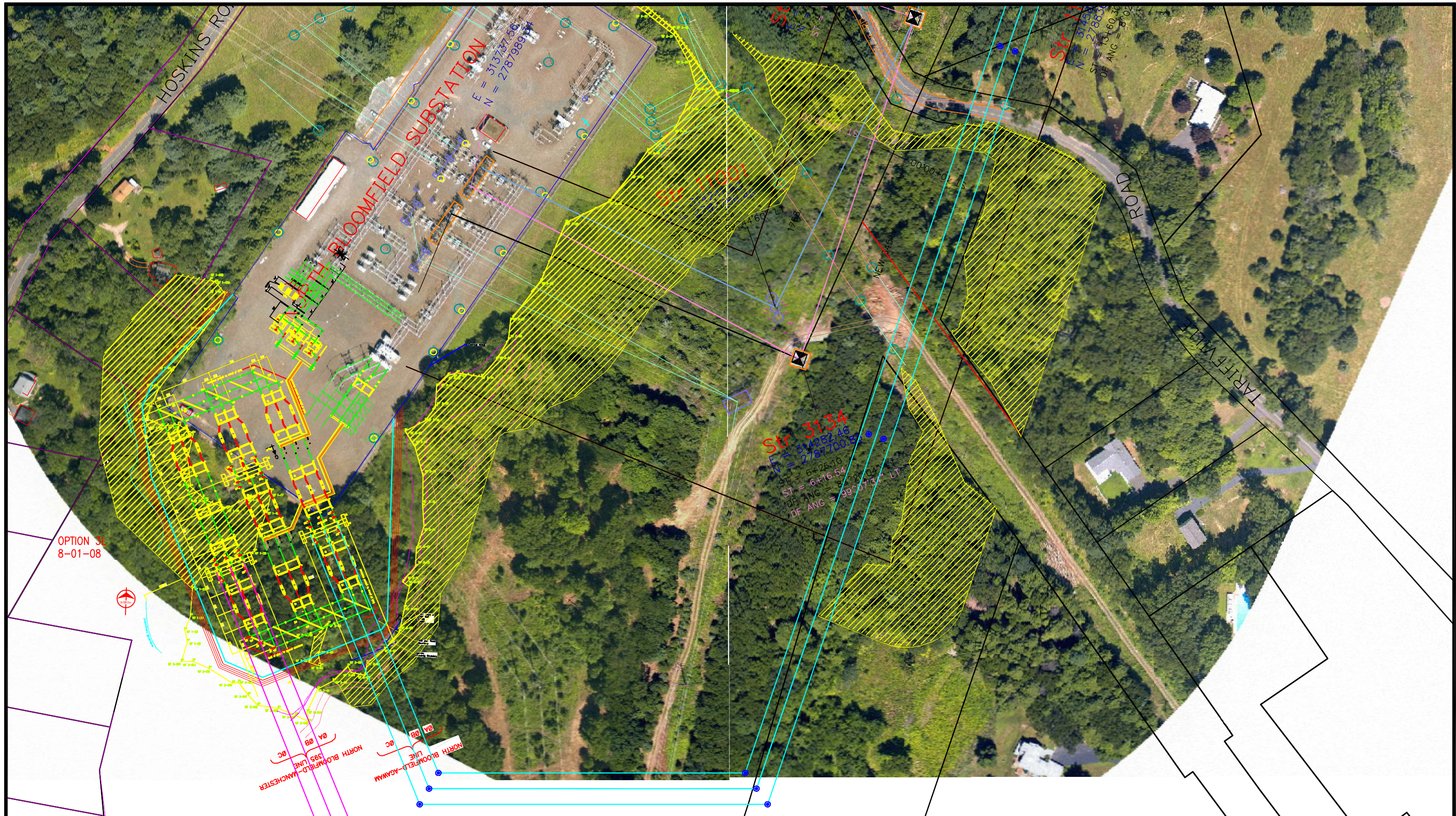
VOLUME 7: SUBSTATION DRAWINGS

EX. 1: Proposed North Bloomfield Substation Modifications

Aerial View (Drawing #09082008NB)

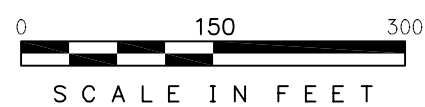
General Arrangement (Drawing # 09091708NB)

Conceptual Layout (Drawing # CP-2a)



OPTION 3L
8-01-08

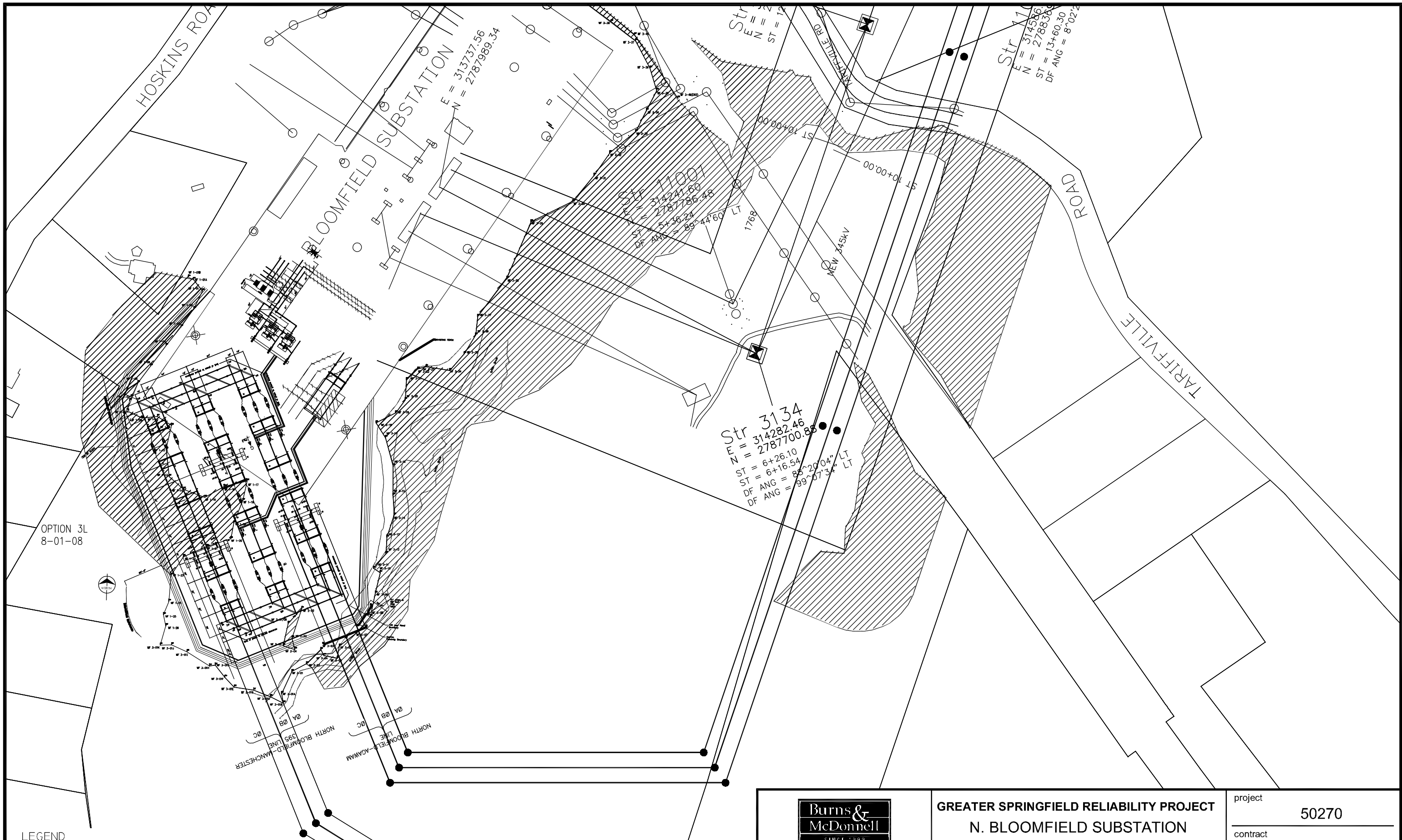
- LEGEND**
- - REVISED SUBSTATION
 - WETLANDS



date SEPT. 24, 2008
designed S. CRAIG

GREATER SPRINGFIELD RELIABILITY PROJECT
N. BLOOMFIELD SUBSTATION
AERIAL VIEW
GENERAL ARRANGEMENT

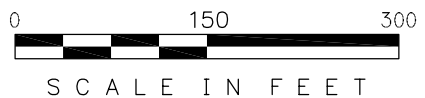
project	50270
contract	
SK -	09082008NB



OPTION 3L
8-01-08

LEGEND

- - REVISED SUBSTATION
- ▨ - WETLANDS



date SEPT. 24 2008
designed S. CRAIG

GREATER SPRINGFIELD RELIABILITY PROJECT
N. BLOOMFIELD SUBSTATION
GENERAL ARRANGEMENT
PRELIMINARY

project 50270
contract
SK - 09091708NB