

Existing Verizon Coverage vs. Proposed Verizon Coverage

Connecticut Siting Council Docket No. 360

July 24, 2008

188 Route 7 South

Falls Village (Canaan), Connecticut

Sites ⁽¹⁾	Distance from Tower	Existing		Proposed	
		Cellular	PCS	Cellular	PCS
Beebe Hill Flyway ⁽²⁾	Approximately 3500 feet	No	No	Yes - Peak & West Side (red & green)	Extreme west shoulder only (green); (red) at foot.
Hollenbeck River	Approximately 8200 feet	Yes - portions (green)	No	Yes - essentially unchanged	No
Robbins Swamp	Approximately 6200 feet	Yes - portions (green)	Yes - well north of Hollenbeck River (green) (off accompanying maps)	Yes - minimal increases (green)	Yes - unchanged
Housatonic Valley Regional High School & Fields	Approximately 2400 feet	No - fringe (green)	No - fringe (green)	Yes - (red)	Yes - (red)
Kellogg School	Approximately 3700 feet	No	No	Yes (1/2 red & 1/2 green)	Yes - (green)
Housatonic River - Trout Spot	Approximately 7000 feet	No	No	Yes - (green)	No
NDDB Sites					
Beebe Hill - East Slope	Approximately 3300 feet	No *	No	No**	No** West shoulder only (green); (red) at foot.
Lookout Point	Approximately 3600 feet	Yes - (green & red)	Yes - (red & green)	Yes - (green & red)	Yes - (red & green)
Salmon Creek	Approximately 4200 feet	No	No	Yes - (green & red)	Yes - (green)
Amesville/Canaan Center	Approximately 7000 feet	Amesville - No; Canaan - Yes (green)	No - Fringe areas (green)	Yes - (red & green)	Yes - (red & green)
Hollenbeck River (Robbins Swamp)	Approximately 8200 feet	Yes - portions (green)	No - fringe (green)	Yes - portions (green)	No

Notes:

⁽¹⁾ Sites were provided by Intervenor's council Attorney Gabriel North Seymour at the July 1, 2008 Connecticut Siting Council Hearing and are depicted on accompanying maps 1-4.

⁽²⁾ No official "flyway" designation is known to occur in the site area. The routes followed by migratory birds are numerous. No two species follow exactly the same path from beginning to end. Flyways may be considered to be those broad areas in which related migration routes are associated or blended in a definite geographic region. There are four major North American flyways that have been named the Atlantic, the Mississippi, the Central and the Pacific Flyways. The Atlantic Flyway may be described as extending from the offshore waters of the Atlantic Coast west to the Allegheny Mountains where, curving northwestward across northern West Virginia and northeastern Ohio, it continues in that direction across the prairie provinces of Canada and the Northwest Territories to the Arctic Coast of Alaska.

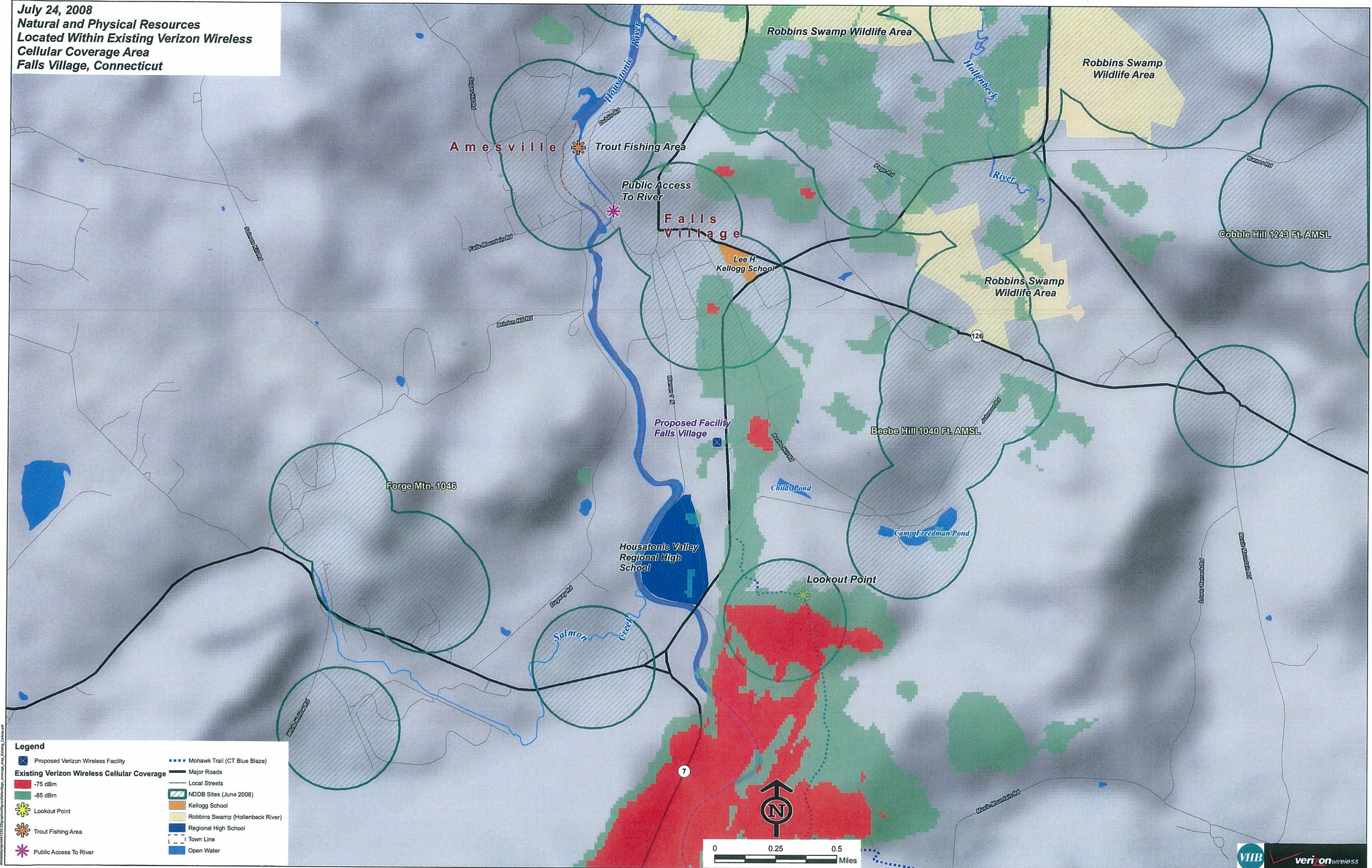
* = South portion of Camp Freedman Pond in Green.

Red = -75 dBm

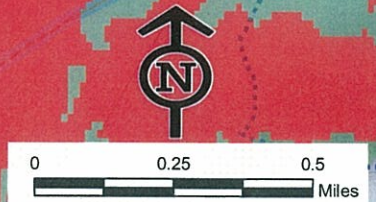
** = Beebe Pond & southwest end of Camp Freedman Pond in Green.

Green = -85 dBm

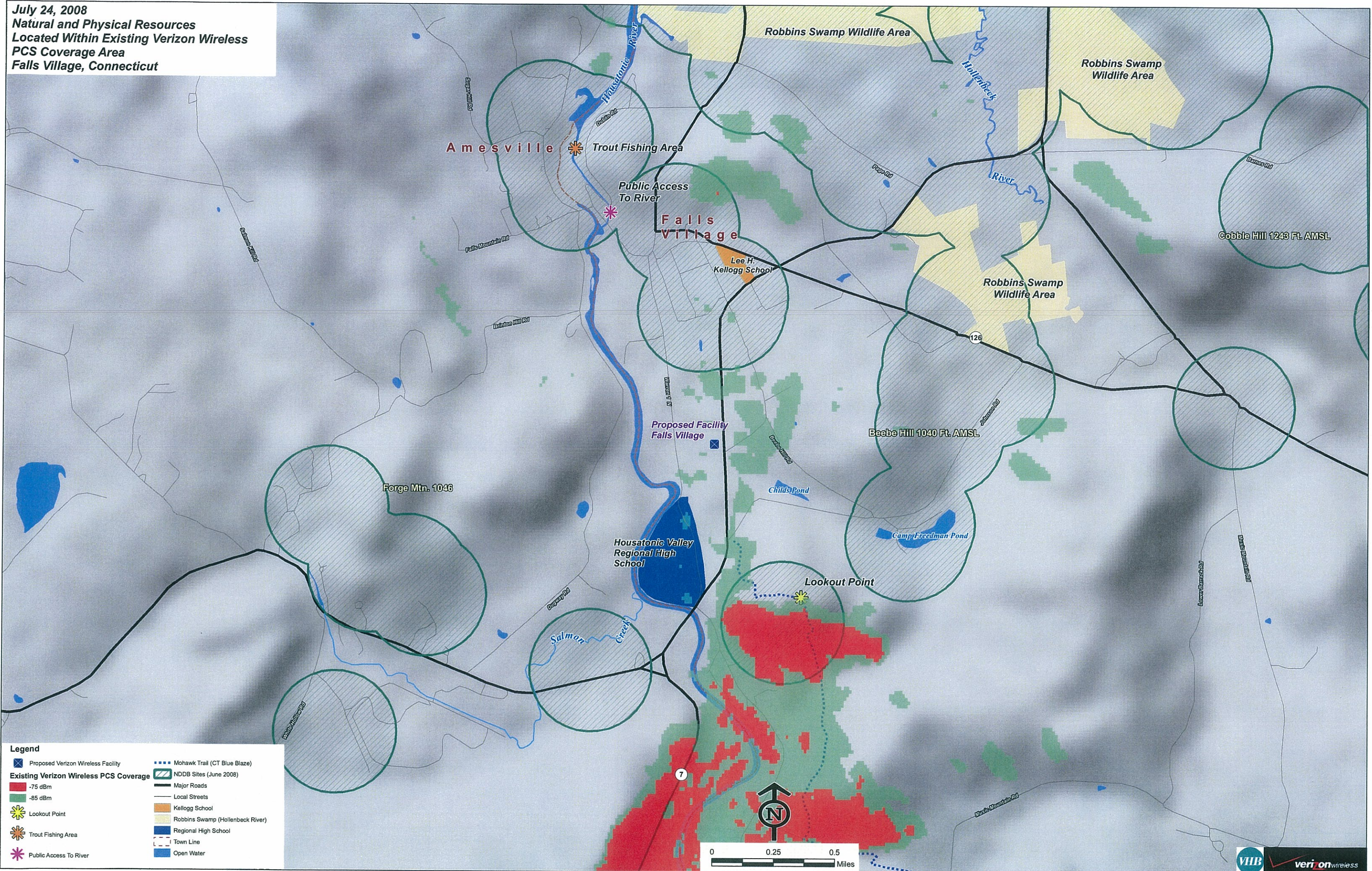
July 24, 2008
 Natural and Physical Resources
 Located Within Existing Verizon Wireless
 Cellular Coverage Area
 Falls Village, Connecticut



- Legend**
- Proposed Verizon Wireless Facility
 - Existing Verizon Wireless Cellular Coverage
 - 75 dBm
 - 85 dBm
 - Lookout Point
 - Trout Fishing Area
 - Public Access To River
 - Mohawk Trail (CT Blue Blaze)
 - Major Roads
 - Local Streets
 - NDBB Sites (June 2008)
 - Kellogg School
 - Robbins Swamp (Hollenbeck River)
 - Regional High School
 - Town Line
 - Open Water

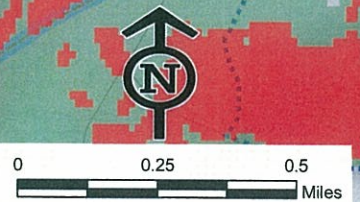


July 24, 2008
 Natural and Physical Resources
 Located Within Existing Verizon Wireless
 PCS Coverage Area
 Falls Village, Connecticut

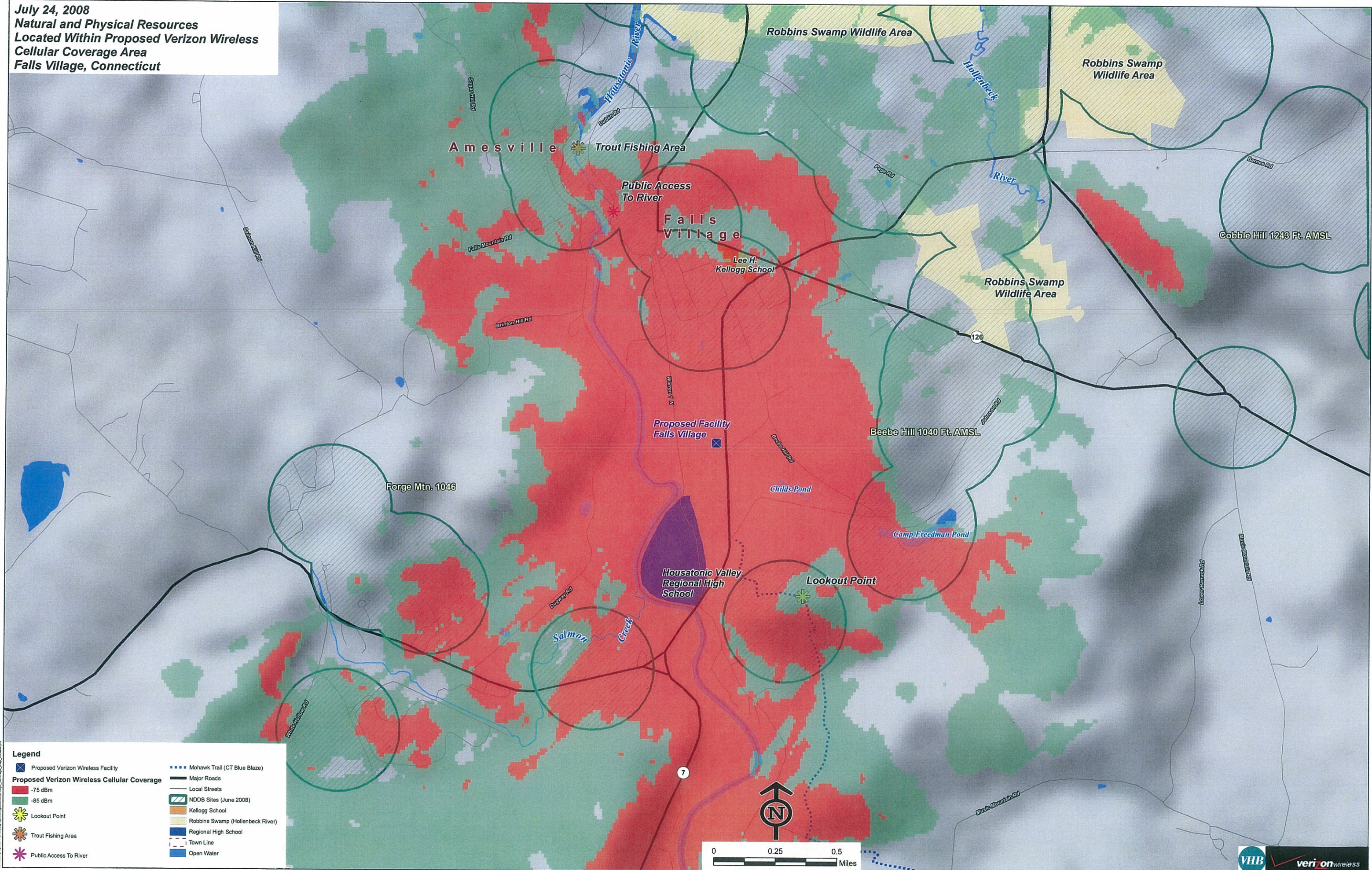


Legend

Proposed Verizon Wireless Facility	Mohawk Trail (CT Blue Blaze)
Existing Verizon Wireless PCS Coverage -75 dBm	Existing Verizon Wireless PCS Coverage -85 dBm
Lookout Point	Kellogg School
Trout Fishing Area	Regional High School
Public Access To River	Town Line
NDDB Sites (June 2008)	Open Water
Major Roads	
Local Streets	
Robbins Swamp (Hollenbeck River)	

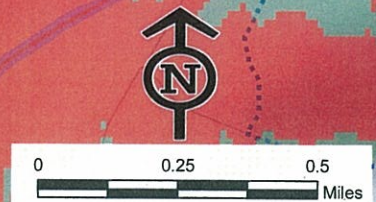


July 24, 2008
 Natural and Physical Resources
 Located Within Proposed Verizon Wireless
 Cellular Coverage Area
 Falls Village, Connecticut

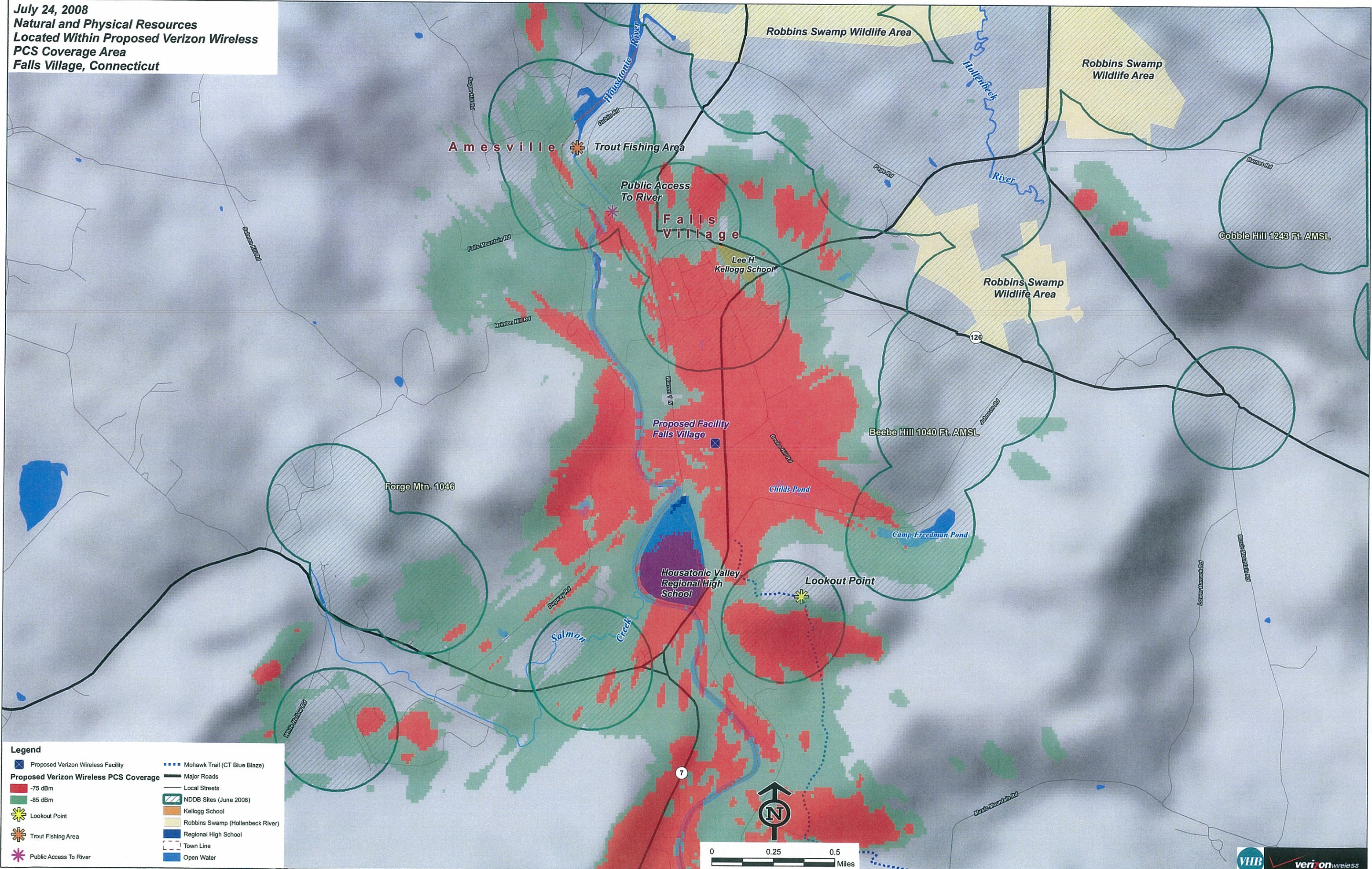


Legend

Proposed Verizon Wireless Facility	Mohawk Trail (CT Blue Blaze)
Proposed Verizon Wireless Cellular Coverage -75 dBm	Major Roads
Proposed Verizon Wireless Cellular Coverage -85 dBm	Local Streets
Lookout Point	NDDB Sites (June 2008)
Trout Fishing Area	Kellogg School
Public Access To River	Robbins Swamp (Hollenbeck River)
	Regional High School
	Town Line
	Open Water



July 24, 2008
 Natural and Physical Resources
 Located Within Proposed Verizon Wireless
 PCS Coverage Area
 Falls Village, Connecticut



Legend

Proposed Verizon Wireless Facility	Mohawk Trail (CT Blue Blaze)
Proposed Verizon Wireless PCS Coverage -75 dBm	Major Roads
-85 dBm	Local Streets
Lookout Point	NDDB Sites (June 2008)
Trout Fishing Area	Kellogg School
Public Access To River	Robbins Swamp (Hollenbeck River)
	Regional High School
	Town Line
	Open Water