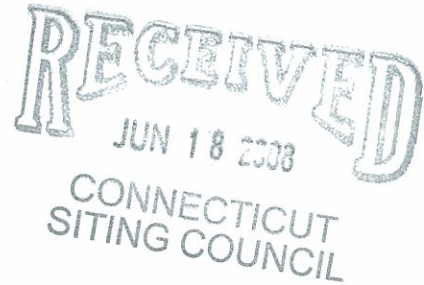


STATE OF CONNECTICUT
CONNECTICUT SITING COUNCIL

IN RE:

APPLICATION OF CELLCO PARTNERSHIP
D/B/A VERIZON WIRELESS FOR A
CERTIFICATE OF ENVIRONMENTAL
COMPATIBILITY AND PUBLIC NEED FOR
THE CONSTRUCTION, MAINTENANCE
AND OPERATION OF A WIRELESS
TELECOMMUNICATIONS FACILITY ON
PROPERTY OF THE FALLS VILLAGE
VOLUNTEER FIRE DEPARTMENT, INC.,
188 ROUTE 7 SOUTH, FALLS VILLAGE,
CONNECTICUT

DOCKET NO. 360



JUNE 18, 2008

SUPPLEMENTAL INFORMATION

On Friday, May 30, 2008, Cellco Partnership d/b/a Verizon Wireless (“Cellco”) acquired the CT-1 RSA cellular license for Litchfield County, Connecticut from Alltel Communications. The acquisition of this license will enable Cellco to expand its cellular footprint and improve its network service into Litchfield County including the Falls Village area in the Town of Canaan.

In addition to cellular and PCS service, Cellco also has recently acquired the FCC license to provide service in the 700 MHz frequency range. Cellco’s 700 MHz frequencies will use LTE Technology for 4G (4th Generation) wireless service. The information provided below and in the attached exhibits is intended to supplement the information previously filed in the Docket No. 360 Application.

Proposed Antenna Installation

Cellco intends to install six PCS and six cellular antennas at the 150-foot level on the proposed Falls Village Facility tower. Cellular antenna specifications are included behind Tab 1

of this filing. At cellular frequencies, Cellco will provide reliable service to a 3.45 mile portion of Route 7, a 1.25 mile portion of Route 112, a 1.3 mile portion of Route 126 and an overall area of approximately 10.6 square miles overall. Plots showing Cellco's existing and proposed cellular coverage in the Falls Village area are attached behind Tab 2. Cellco does not intend to install 700 MHz frequency antennas on the Falls Village tower at this time.

Cellular License

A copy of the recently acquired the FCC CT-1 RSA Cellular License is attached behind Tab 3.

Visibility

The installation of cellular antennas in addition to the PCS antennas currently proposed will not change, in any way the findings in the Visual Resource Evaluation Report included in the application.

Non-Ionizing Radio Frequency Radiation

To supplement the information included on page 15 and behind Tab 1 of the Application, Cellco has performed new maximum power density calculations for the proposed Falls Village Facility including both cellular and PCS antennas. This calculation is a conservative worst-case approximation for RF power density levels at the closest accessible point, the base of the tower, with all antennas transmitting simultaneously on all channels at full power. The calculations indicate that the maximum power density level for Cellco antennas would be 18.80% of the FCC standard.

CERTIFICATION

I hereby certify that on the 18th day of June 2008, a copy of the foregoing was mailed, postage prepaid, to:

Robert H. Rout, Esq.
160 Wells Hill Road
Lakeville, CT 06039
therouts@webtv.net

Gabriel North Seymour P.C.
200 Route 126
Falls Village, CT 06031
certiorari@earthlink.net


Kenneth C. Baldwin

LPA-70090/4CF

When ordering replace "___" with connector type.

Mechanical specifications

Length	1200 mm	47.2 in
Width	140 mm	5.5 in
Depth	240 mm	9.4 in
Depth with z-bracket	280 mm	11.0 in
4) Weight	5 kg	11.0 lbs
Wind Area		
Fore/Aft	0.17 m ²	1.8 ft ²
Side	0.29 m ²	3.1 ft ²
Rated Wind Velocity (Safety factor 2.0)	>444 km/hr >276 mph	
Wind Load @ 100 mph (161 km/hr)		
Fore/Aft	254 N	57.1 lbs
Side	415 N	93.3 lbs

Antenna consisting of aluminum alloy with brass feedlines covered by a UV safe fiberglass radome.

Mounting and Downtilting

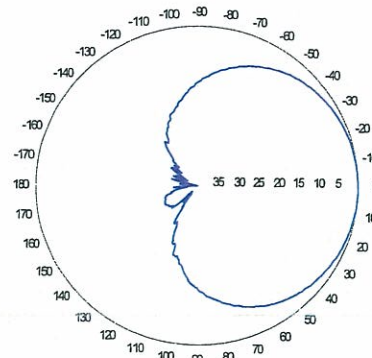
Mounting brackets attach to a pipe diameter of Ø50-102 mm (2.0-4.0 in). If the lock-down brace is used, the maximum diameter is Ø88.9 mm (3.5 in).

Mounting Bracket & Downtilt Bracket Kit
#21699999

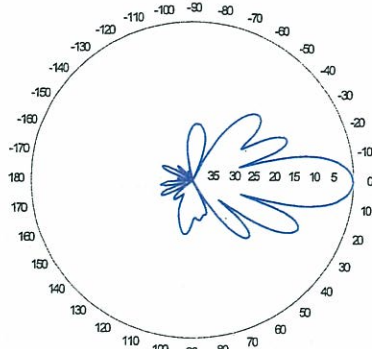
Electrical specifications

Frequency Range	696-900 MHz
Impedance	50Ω
3) Connector(s)	NE or E-DIN 1 port / center
1) VSWR	≤ 1.4:1
Polarization	Vertical
1) Gain	11.5 dBd
2) Power Rating	500 W
1) Half Power Angle	
H-Plane	90°
E-Plane	15°
1) Electrical Downtilt	0°
1) Null Fill	10-15%
Lightning Protection	Direct Ground

Radiation pattern¹⁾



Horizontal

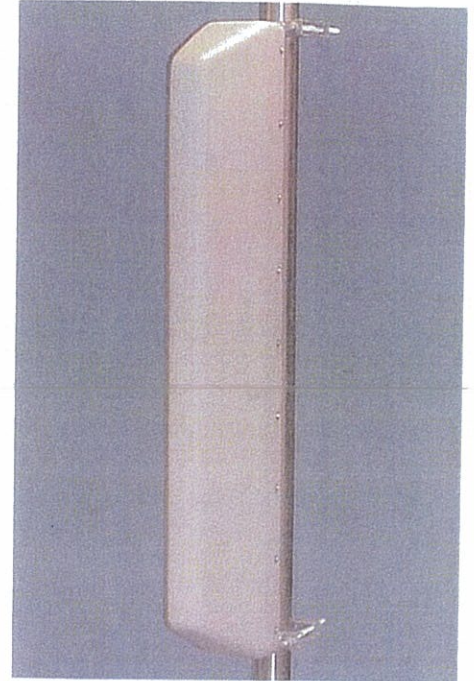


Vertical

Featuring upper side lobe suppression.

Radiation patterns for all antennas are measured with the antenna mounted on a fiberglass pole.

Mounting on a metal pole will typically improve the Front-to-Back ratio.



Amphenol Antel's Exclusive 3T (True Transmission Line Technology) Antenna Design:

- True log-periodic design allows for superior front-to-side characteristics to minimize sector overlap.
- Unique feedline design eliminates the need for conventional solder joints in the signal path.
- A non-collinear system with access to every radiating element for broad bandwidth and superior performance.
- Air as insulation for virtually no internal signal loss.

This Amphenol Antel antenna is under a five-year limited warranty for repair or replacement.

Antenna available with center-fed connector only.

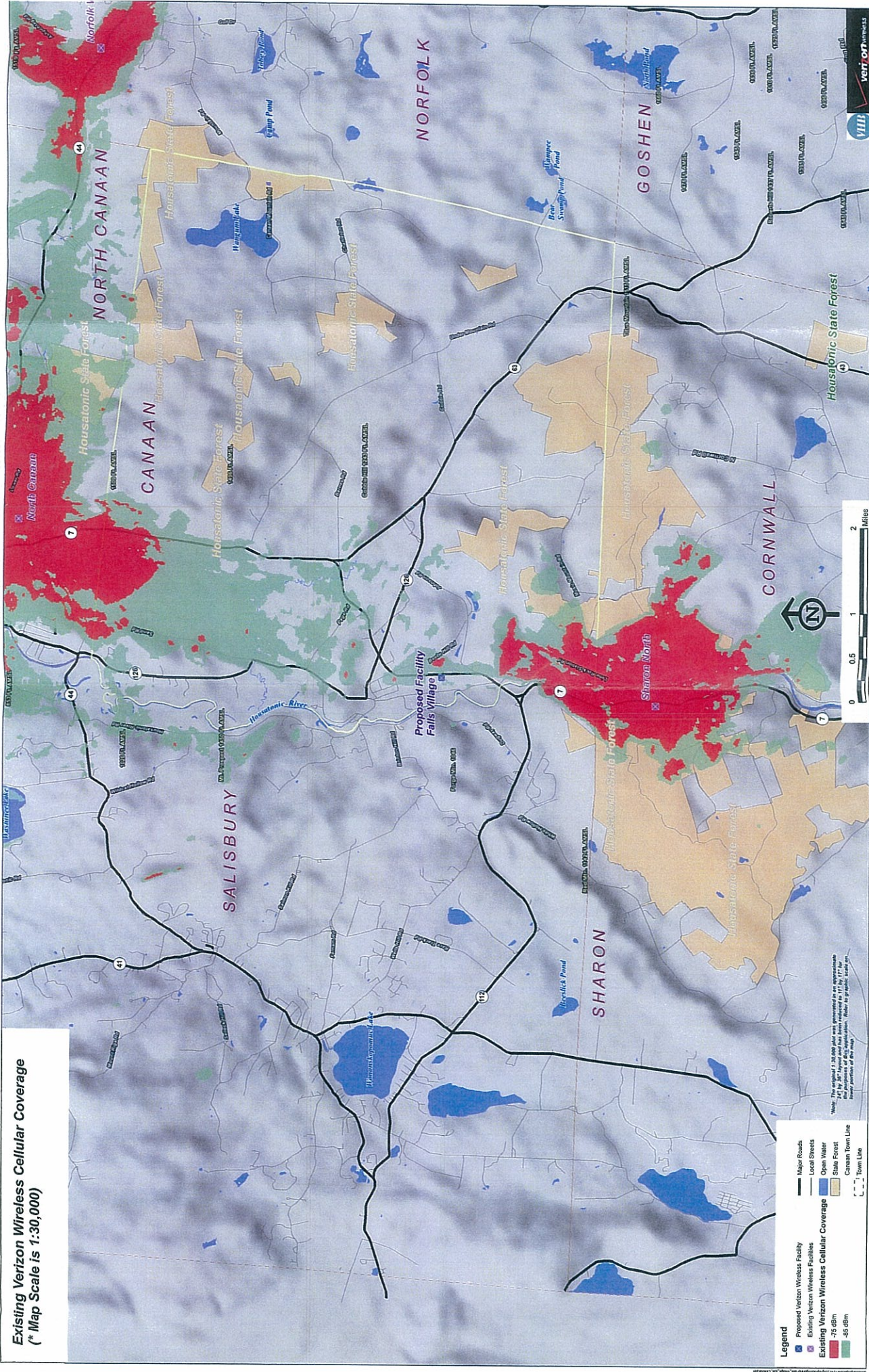
CF Denotes a Center-Fed Connector.

696-900 MHz

1) Typical values.
2) Power rating limited by connector only.
3) NE indicates an elongated N connector. E-DIN indicates an elongated DIN connector.
4) The antenna weight listed above does not include the bracket weight.

Improvements to mechanical and/or electrical performance of the antenna may be made without notice.

Existing Verizon Wireless Cellular Coverage
 (* Map Scale is 1:30,000)

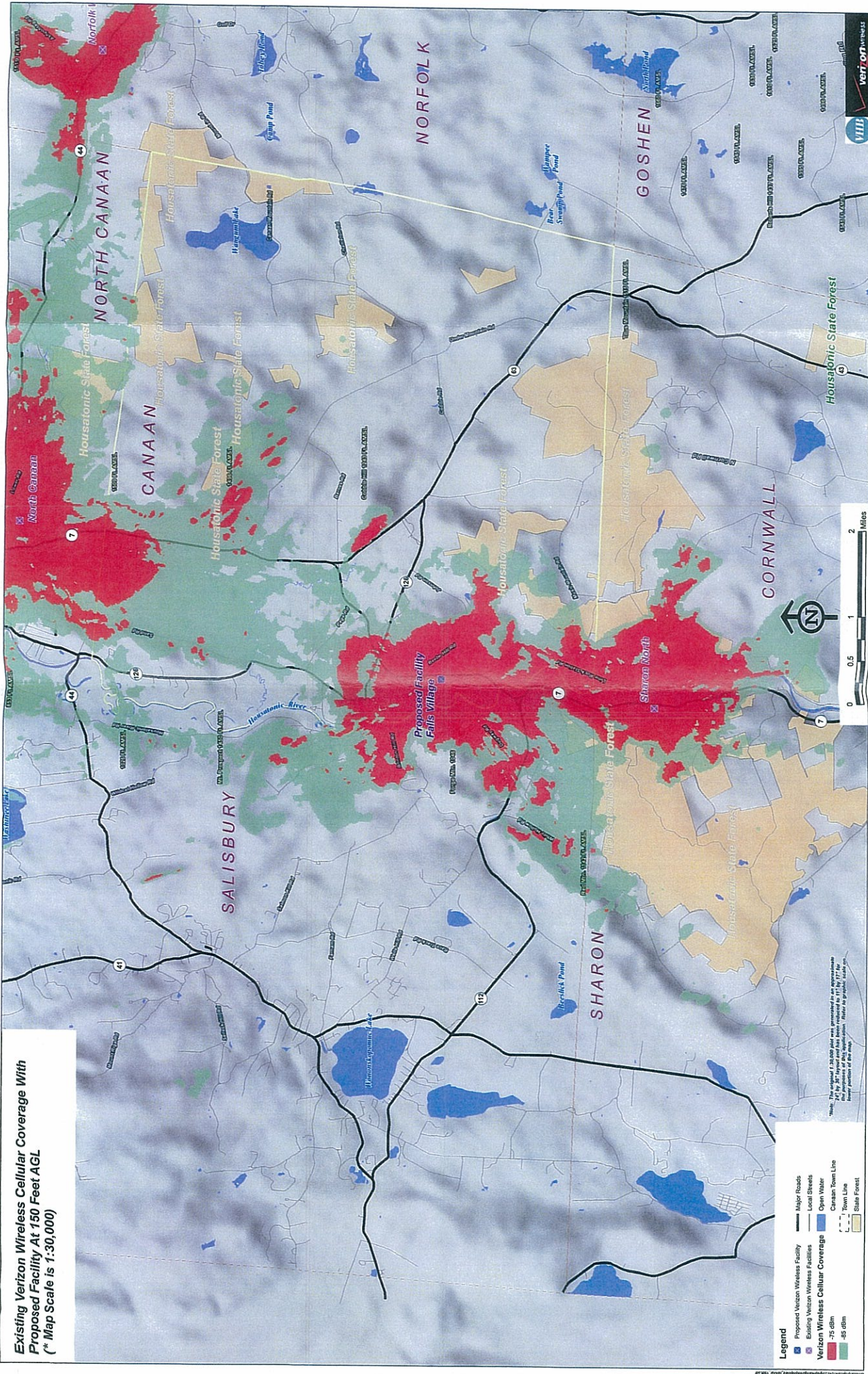


- Legend**
- Proposed Verizon Wireless Facility
 - Existing Verizon Wireless Facility
 - Major Roads
 - Local Streets
 - Existing Verizon Wireless Cellular Coverage
 - 75 dBm
 - 85 dBm
 - Open Water
 - State Forest
 - Canaan Town Line
 - Sharon Town Line

*Note: The original 1:30,000 scale was generated as an approximation and the purpose of this application. Refer to graphic scale on lower portion of the map.



**Existing Verizon Wireless Cellular Coverage With
Proposed Facility At 150 Feet AGL
(* Map Scale is 1:30,000)**



Legend

- Proposed Verizon Wireless Facility
- Existing Verizon Wireless Facilities
- Verizon Wireless Cellular Coverage
- 75 dBm
- 85 dBm
- Major Roads
- Local Streets
- Open Water
- Canaan Town Line
- Town Line
- State Forest

*Note: The original 1:30,000 plan was generated by an approved third party. The map is not a guarantee of service. Service is subject to change without notice. © 2010 Verizon Wireless. All rights reserved.

REFERENCE COPY

This is not an official FCC license. It is a record of public information contained in the FCC's licensing database on the date that this reference copy was generated. In cases where FCC rules require the presentation, posting, or display of an FCC license, this document may not be used in place of an official FCC license.



**Federal Communications Commission
Wireless Telecommunications Bureau**

RADIO STATION AUTHORIZATION

LICENSEE: CELLCO PARTNERSHIP

ATTN: REGULATORY
CELLCO PARTNERSHIP
1120 SANCTUARY PKWY #150 - GASA5REG
ALPHARETTA, GA 30004

Call Sign KNKN833	File Number
Radio Service CL - Cellular	
Market Numer CMA357	Channel Block A
Sub-Market Designator 0	

FCC Registration Number (FRN): 0003290673

Market Name Connecticut 1 - Litchfield
--

Grant Date 10-16-2001	Effective Date 05-15-2008	Expiration Date 10-01-2011	Five Yr Build-Out Date	Print Date
---------------------------------	-------------------------------------	--------------------------------------	-------------------------------	-------------------

Site Information:

Location	Latitude	Longitude	Ground Elevation (meters)	Structure Hgt to Tip (meters)	Antenna Structure Registration No.
3	41-49-16.6 N	073-17-47.1 W	514.2	26.8	

Address: Mohawk Mountain

City: Mohawk County: LITCHFIELD State: CT Construction Deadline:

Antenna: 3 Azimuth (from true north)	0	45	90	135	180	225	270	315
Antenna Height AAT (meters)	178.500	113.000	194.500	187.700	230.200	134.200	207.600	219.300
Transmitting ERP (watts)	68.380	124.450	56.870	7.320	0.440	0.240	0.680	10.110
Antenna: 4 Azimuth (from true north)	0	45	90	135	180	225	270	315
Antenna Height AAT (meters)	178.500	113.000	194.500	187.700	230.200	134.200	207.600	219.300
Transmitting ERP (watts)	0.550	1.550	25.400	161.340	278.610	134.200	18.400	1.010

Conditions:

Pursuant to §309(h) of the Communications Act of 1934, as amended, 47 U.S.C. §309(h), this license is subject to the following conditions: This license shall not vest in the licensee any right to operate the station nor any right in the use of the frequencies designated in the license beyond the term thereof nor in any other manner than authorized herein. Neither the license nor the right granted thereunder shall be assigned or otherwise transferred in violation of the Communications Act of 1934, as amended. See 47 U.S.C. § 310(d). This license is subject in terms to the right of use or control conferred by §706 of the Communications Act of 1934, as amended. See 47 U.S.C. §606.

Licensee Name: CELLCO PARTNERSHIP

Call Sign: KNKN833

File Number:

Print Date:

Location	Latitude	Longitude	Ground Elevation (meters)	Structure Hgt to Tip (meters)	Antenna Structure Registration No.
8	41-44-12.3 N	073-05-49.3 W	223.7	56.3	

Address: 123 Campville Hill Rd (Harwinton site)

City: Terryville County: LITCHFIELD State: CT Construction Deadline:

Antenna: 1 Azimuth (from true north)	0	45	90	135	180	225	270	315
Antenna Height AAT (meters)	30.000	30.200	68.000	41.400	69.000	30.000	30.000	30.000
Transmitting ERP (watts)	59.560	184.070	146.210	34.270	3.500	0.370	0.660	9.660
Antenna: 2 Azimuth (from true north)	0	45	90	135	180	225	270	315
Antenna Height AAT (meters)	30.000	30.200	68.000	41.400	69.000	30.000	30.000	30.000
Transmitting ERP (watts)	0.380	5.550	41.200	160.320	171.790	50.690	6.530	0.400
Antenna: 3 Azimuth (from true north)	0	45	90	135	180	225	270	315
Antenna Height AAT (meters)	30.000	30.200	68.000	41.400	69.000	30.000	30.000	30.000
Transmitting ERP (watts)	60.950	9.010	0.450	0.360	4.120	33.400	146.200	184.000

Location	Latitude	Longitude	Ground Elevation (meters)	Structure Hgt to Tip (meters)	Antenna Structure Registration No.
9	41-53-37.7 N	072-59-47.3 W	241.7	45.7	1250429

Address: 50 Rust Road (Barhamstead Site)

City: Litchfield County: LITCHFIELD State: CT Construction Deadline:

Antenna: 1 Azimuth (from true north)	0	45	90	135	180	225	270	315
Antenna Height AAT (meters)	30.000	30.000	75.200	134.200	30.000	30.000	30.000	30.000
Transmitting ERP (watts)	153.100	62.370	7.850	0.390	0.300	0.980	12.730	86.000
Antenna: 2 Azimuth (from true north)	0	45	90	135	180	225	270	315
Antenna Height AAT (meters)	30.000	30.000	75.200	134.200	30.000	30.000	30.000	30.000
Transmitting ERP (watts)	0.260	3.500	17.570	22.130	6.380	0.680	0.100	0.100
Antenna: 3 Azimuth (from true north)	0	45	90	135	180	225	270	315
Antenna Height AAT (meters)	30.000	30.000	75.200	134.200	30.000	30.000	30.000	30.000
Transmitting ERP (watts)	1.330	0.280	0.280	4.410	44.150	142.880	108.390	20.650

Licensee Name: CELLCO PARTNERSHIP

Call Sign: KNKN833

File Number:

Print Date:

Location	Latitude	Longitude	Ground Elevation (meters)	Structure Hgt to Tip (meters)	Antenna Structure Registration No.
10	41-51-43.3 N	073-23-58.6 W	419.1	60.0	

Address: 7 Sirdan Mountain Road (Cornwall Site)

City: Cornwall County: LITCHFIELD State: CT Construction Deadline:

Antenna: 1 Azimuth (from true north)	0	45	90	135	180	225	270	315
Antenna Height AAT (meters)	195.900	156.200	78.900	137.200	168.300	131.800	229.400	196.200
Transmitting ERP (watts)	10.710	6.510	1.140	0.100	0.100	0.100	0.940	5.830

Control Points:

Waivers/Conditions:

This license is conditioned upon compliance with the provisions of Applications of AT&T Wireless Services, Inc. and Cingular Wireless Corporation For Consent to Transfer Control of Licenses and Authorizations, Memorandum Opinion and Order, FCC 04-255 (rel. Oct. 26, 2004).

Spectrum Lease Associated with this License. See Spectrum Leasing Arrangement Letter dated 12/06/2004 and File # 0001918527.

The Spectrum Leasing Arrangement, which became effective upon approval of application file number 0001918527, was terminated on 04/14/2005. See file number 0002135354.