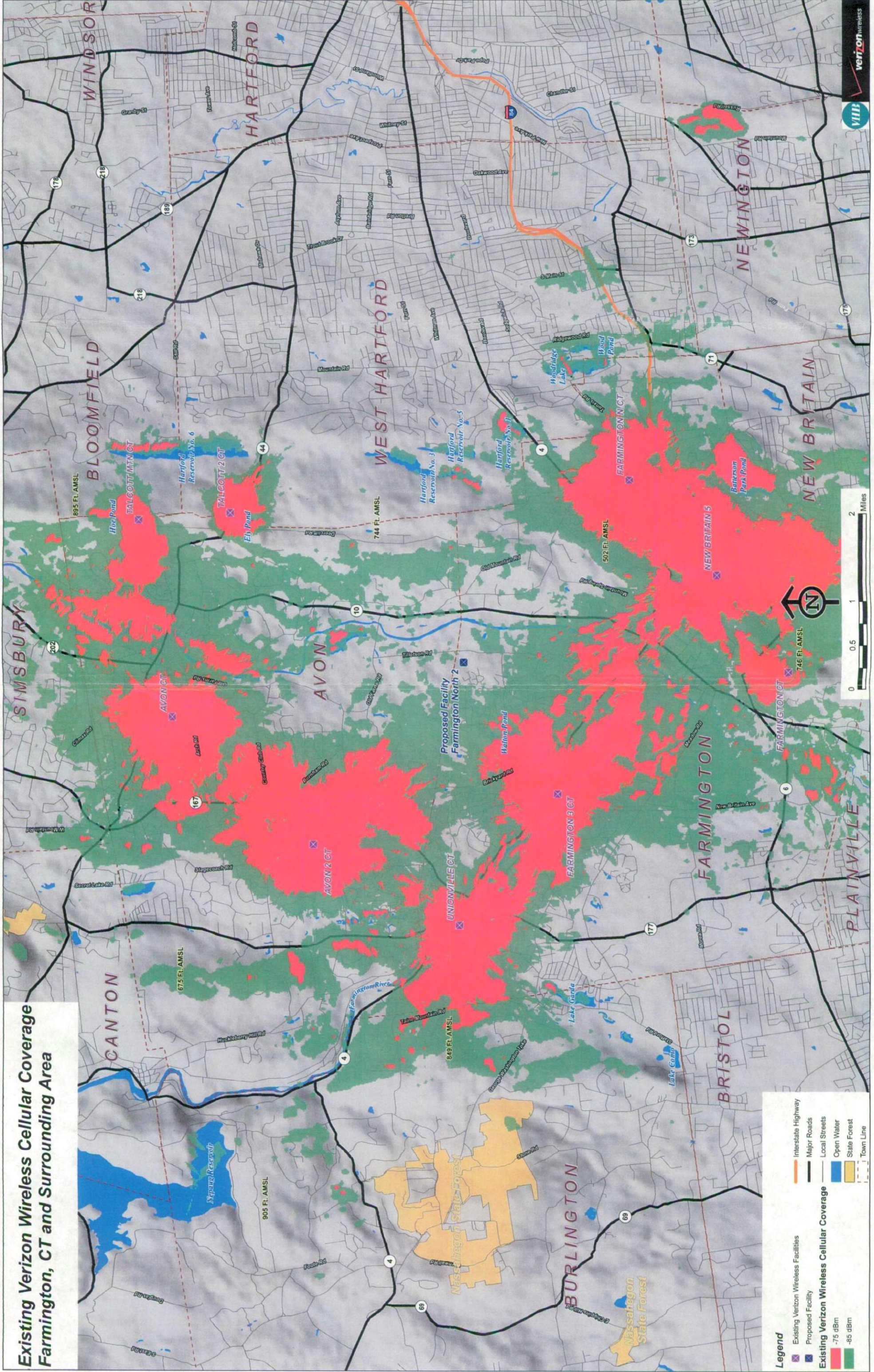


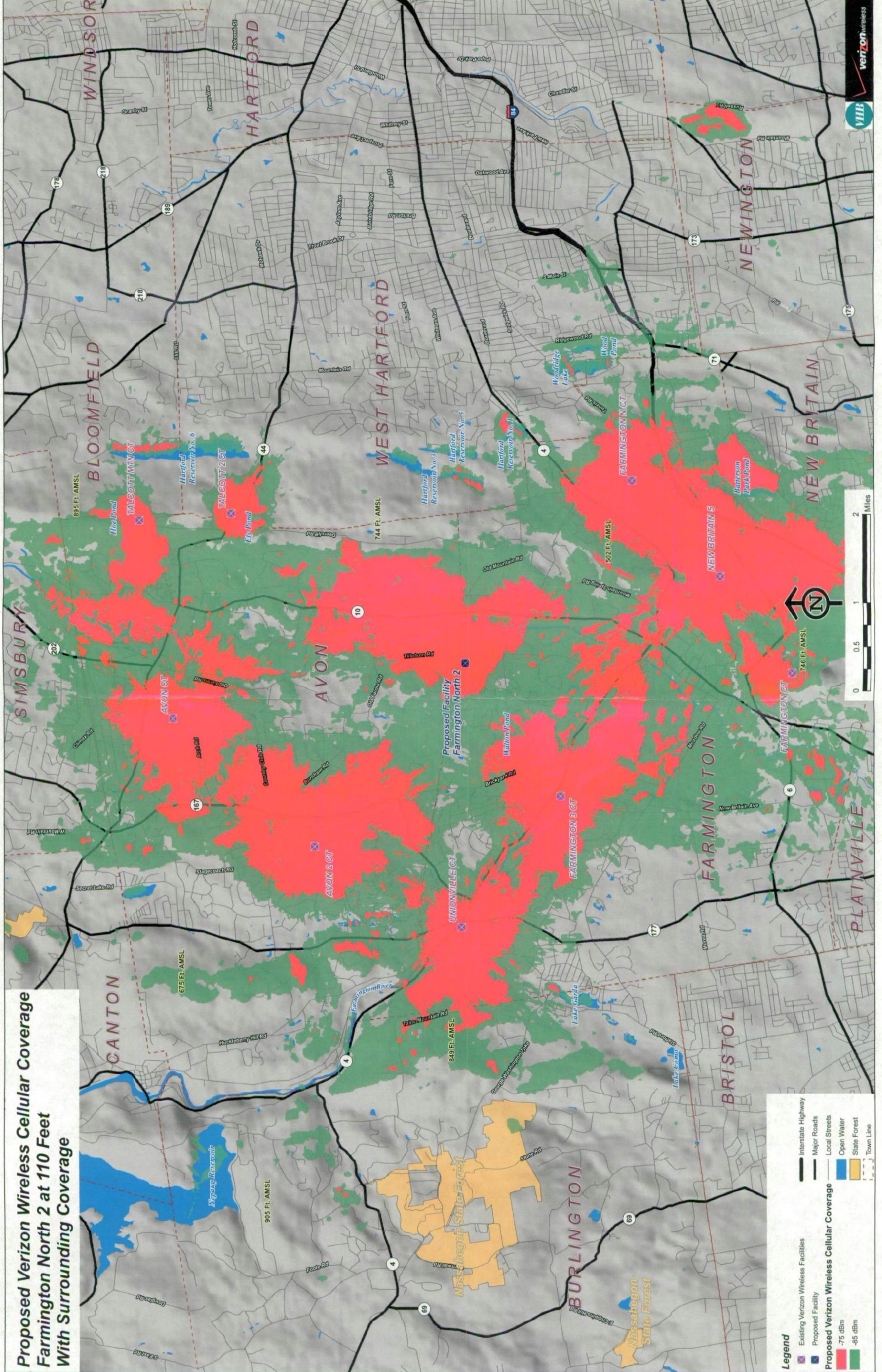
**Existing Verizon Wireless Cellular Coverage
Farmington, CT and Surrounding Area**



Legend

- Interstate Highway
- Major Roads
- Local Streets
- Open Water
- State Forest
- Town Line
- Existing Verizon Wireless Facilities
- Proposed Facility
- Existing Verizon Wireless Cellular Coverage
 - 75 dBm
 - 85 dBm

**Proposed Verizon Wireless Cellular Coverage
Farmington North 2 at 110 Feet
With Surrounding Coverage**

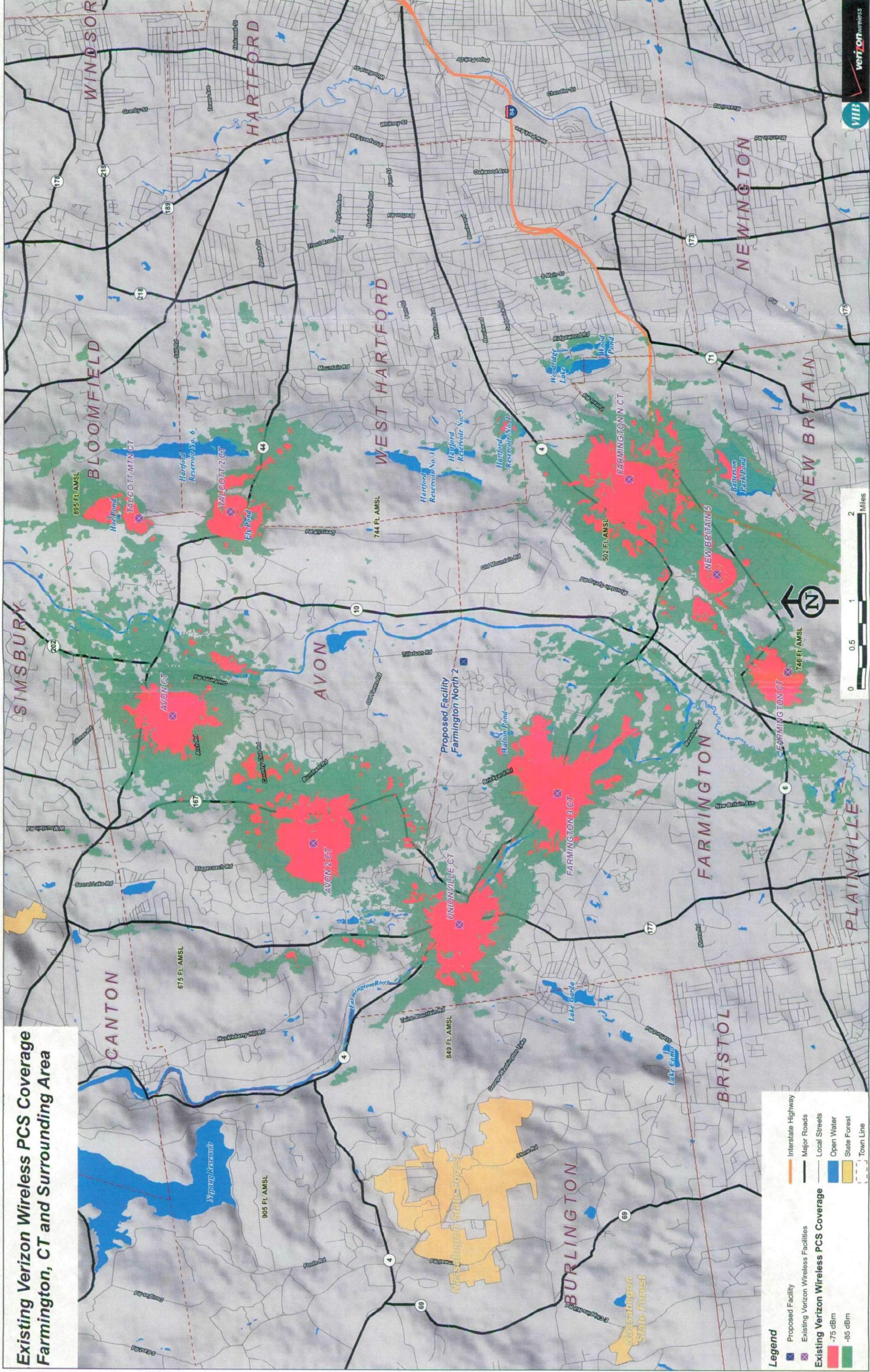


Legend

- Existing Verizon Wireless Facilities
- Proposed Facility
- Proposed Verizon Wireless Cellular Coverage
- 75 dBm
- 85 dBm
- Interstate Highway
- Major Roads
- Local Streets
- Open Water
- State Forest
- Town Line



Existing Verizon Wireless PCS Coverage Farmington, CT and Surrounding Area



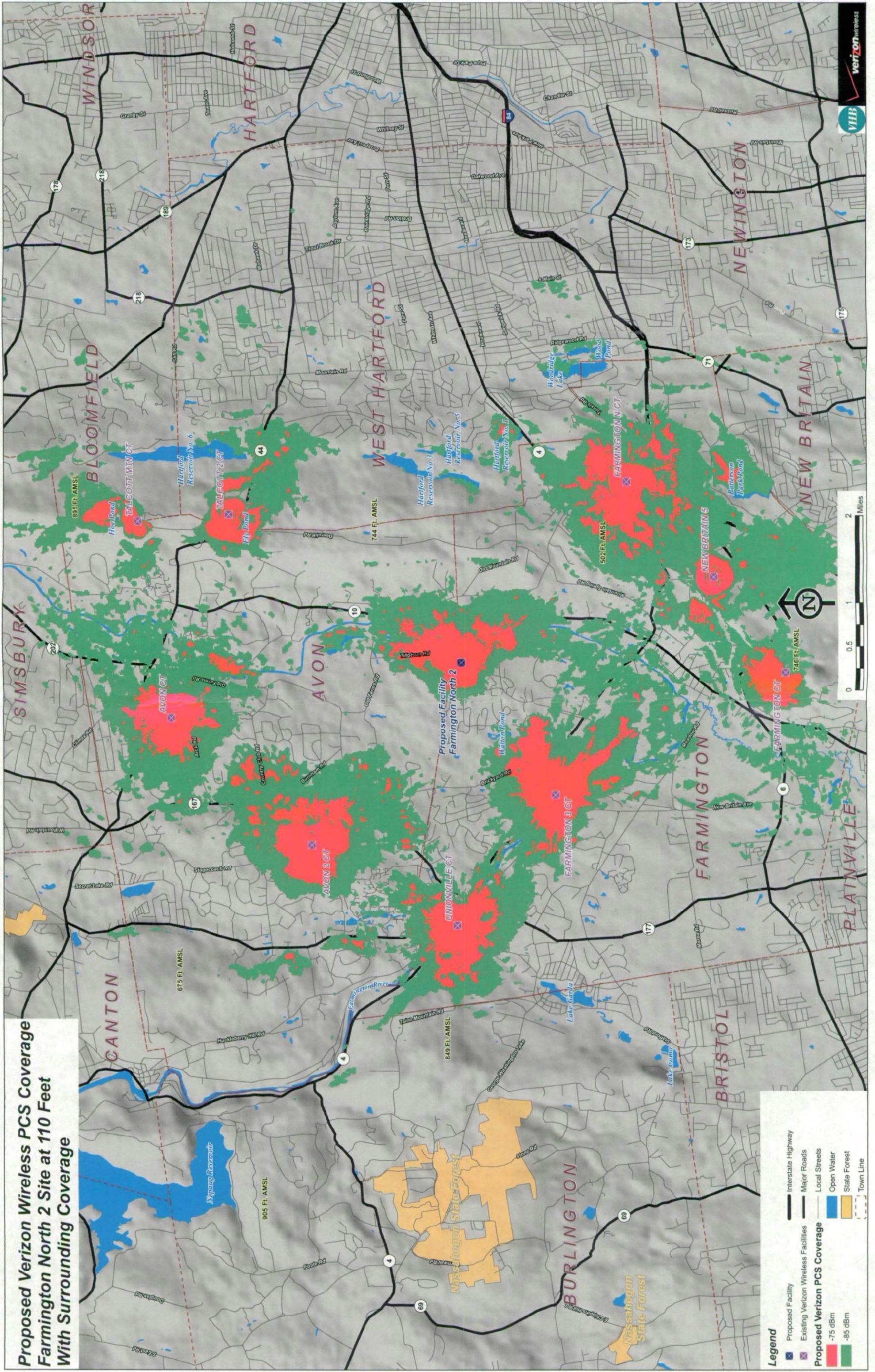
Legend

- Proposed Facility
 - Existing Verizon Wireless Facilities
 - Interstate Highway
 - Major Roads
 - Local Streets
 - Open Water
 - State Forest
 - Town Line
- Existing Verizon Wireless PCS Coverage**
- 75 dBm
 - 85 dBm



Map prepared by Verizon Wireless on 11/15/07. All rights reserved. No part of this map may be reproduced without the written permission of Verizon Wireless.

**Proposed Verizon Wireless PCS Coverage
Farmington North 2 Site at 110 Feet
With Surrounding Coverage**



Legend

- Proposed Facility (Blue 'X')
- Existing Verizon Wireless Facilities (Purple 'X')
- Proposed Verizon PCS Coverage
 - 75 dBm (Red)
 - 85 dBm (Green)
- Interstate Highway (Thick black line)
- Major Roads (Thin black line)
- Local Streets (Dotted black line)
- Open Water (Blue)
- State Forest (Yellow)
- Town Line (Dashed black line)

