



State of Connecticut
Criminal Justice Information System

Governing Board Meeting
October 18, 2012



Agenda

- Introduction
- OBTS Status
- CIDRIS Status
- CISS Update
 - Program Management
 - Business
 - Technology
 - IV & V (Independent Validation & Verification)
- Nastel Demonstration



OBTS — Key Accomplishments

7.3 Quarterly Release

- Key changes were inquiry performance enhancements, data purity correction, and general database maintenance;
 - Exact name search redesign,
 - Smart name search fine tuning,
 - Event 18-Case Activity from CRMVS.

OBTS Certification Classes

- Two hands-on certification classes were held in August and September at Judicial's Learning Center; 28 students successfully passed the certification exam.



OBTS — Where We Are Going

The Next 90 Days

- Test and deploy deliverables for Release 7.4.
- Finalize OBTS 7.5 Release deliverables and begin constructing it.
- Complete data comparison and evaluation effort of the Judicial branch's source systems and document findings.
- Kick off the data purity initiative for the OBIS system with the Department of Correction.



CIDRIS – Key Accomplishments

Implementation Completed

- Six State Police Troops — G, H, D, C, K, and E – completed CIDRIS implementation in August. This completes the CIDRIS deployment to all troops.

Software Updates

- DESPP updated CAD/RMS to improve data accuracy and ensure all mandatory documents are attached.
- Judicial and DESPP developed new program to automatically update surety bondsman and insurance data .
- DMV and CJIS completed CIDRIS software updates including:
 - Support for a new case disposition type used to track suspended drivers' licenses & disqualified commercial drivers' licenses
 - A program to reduce duplicate document attachments & data storage resources.



CIDRIS – Where We Are Going

The Next 90 Days

- Improve quality of OUI data to near-100% accuracy.
- Resolve delivery issues with electronic OUI data to Judicial & DMV.

New Activities

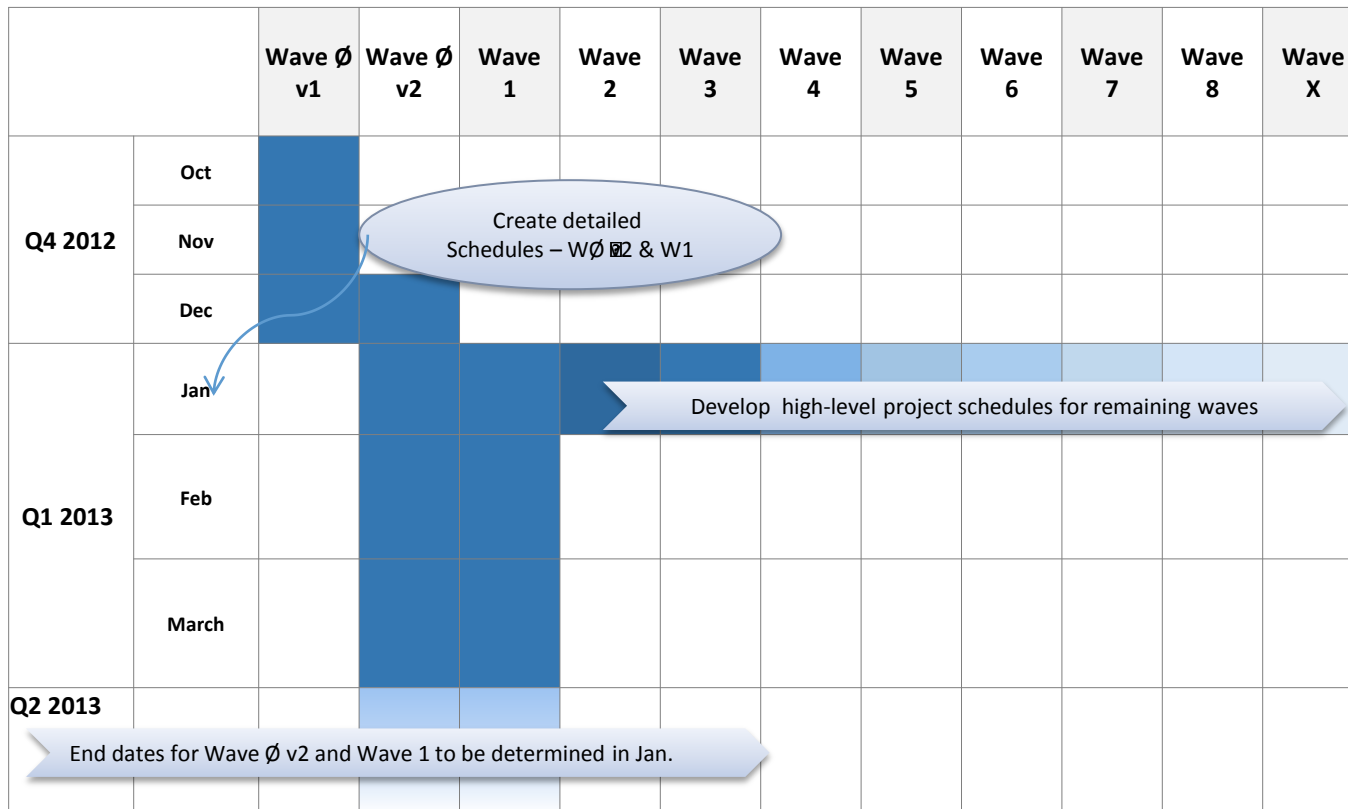
- Judicial will implement the CJIS Forms Viewer application.
- CIDRIS program will expand to support the Division of Criminal Justice.

Benefits to CJIS Community

- CIDRIS makes electronic delivery of OUI information possible, which improves the efficiency and reliability of electronic information exchange between CJIS agencies.
- Improved efficiency improves service to end-users and lowers costs.



CISS Project Waves





CISS — Scope for Wave Ø, Version 1

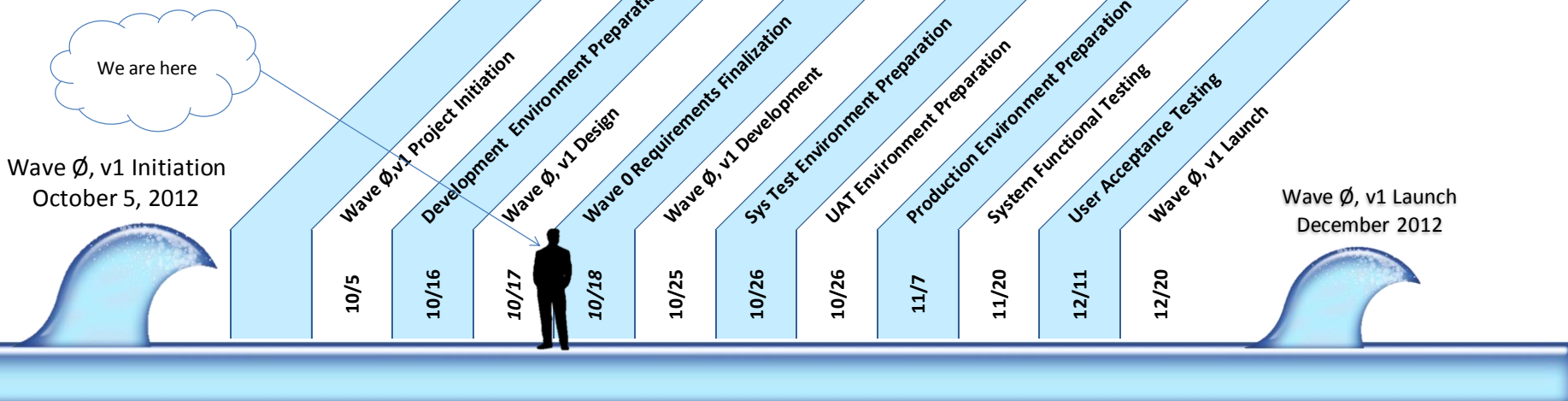
- Significantly improved search performance of OBTS.
- Multiple methods for searching CJIS information:
 - Internet-style natural language search with progressively narrowed search results similar to e-commerce applications,
 - Advanced Search screens and detailed data retrieval based on stakeholder input.
- Dept. of Justice GFIPM standards for data security.
- Two-factor authentication (like secure online banking).
- CISS SharePoint portal version 1 with search and login screens
 - Logon / logoff
 - First-time logon / security questions setup
 - Forgot password / password reset
- Initial audit and logging features.

CISS – Wave 0, Version 1

CiSS Timeline

Wave 0, version 1

- Functionality in Wave 0, v1
- Search OBTS
 - Security
 - Certificate Authority
 - Credentialing
 - Claims based security
 - Audit and logging

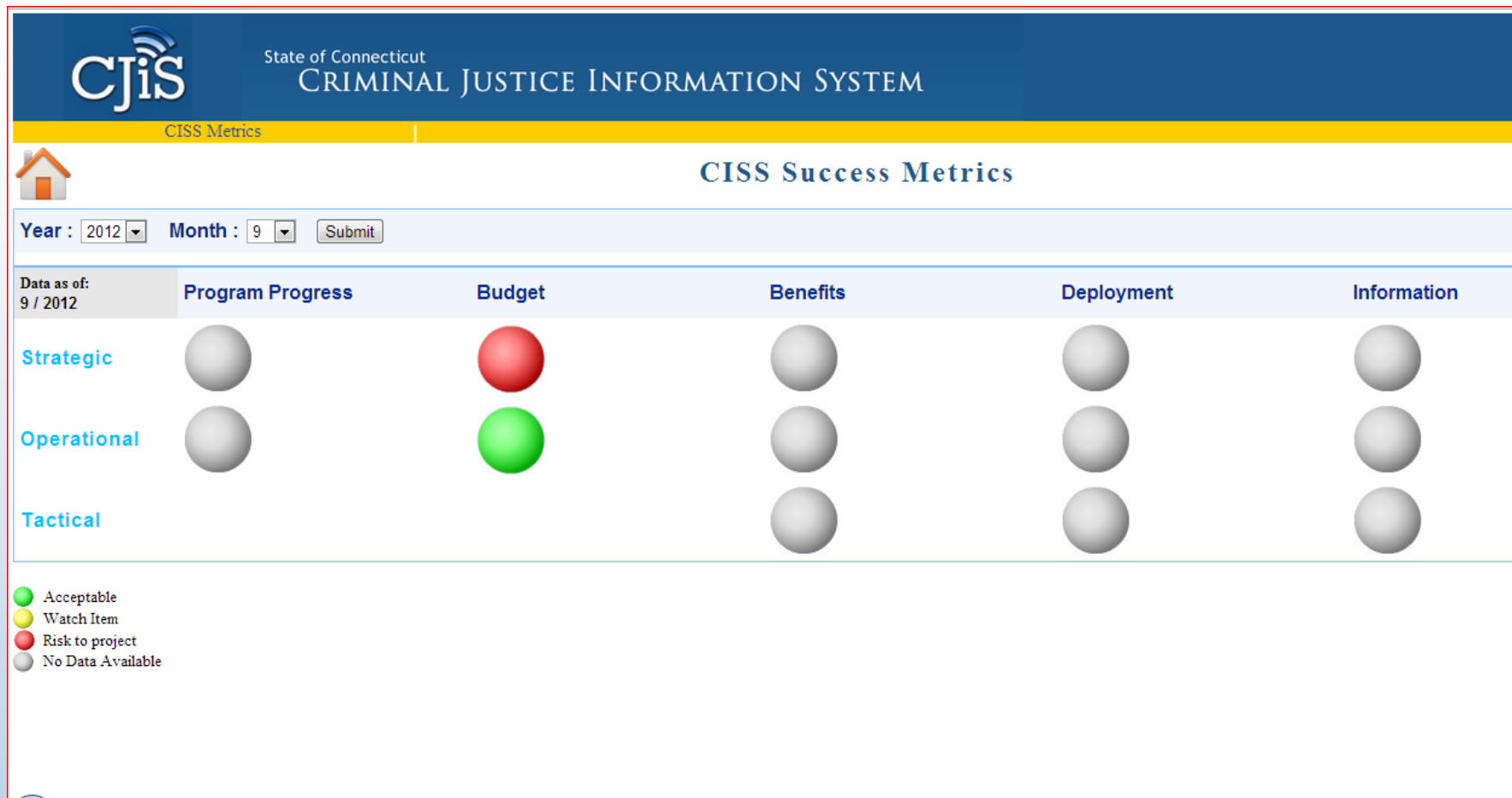


Note: All dates are subject to change. CISS is a complex project with numerous dependencies over which CISS has limited or no control. What is described here is carefully-calculated and realistic, but which may shift depending upon specific circumstances.



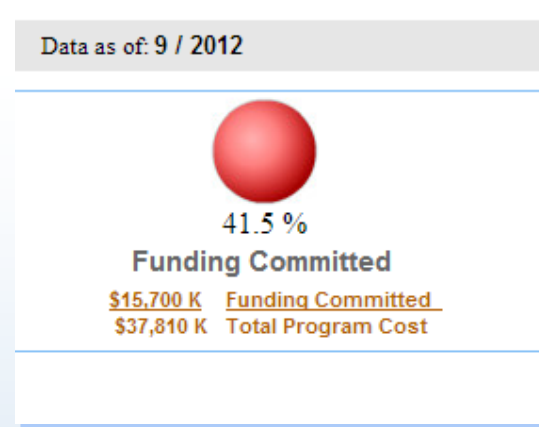
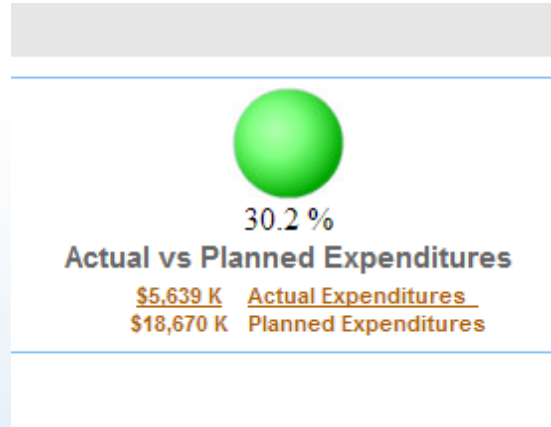
CISS — Scope for Wave Ø, Version 2

- Expand to include additional search sources/databases.
- Additional advanced search screens.
- Additional search indices to expand beyond “person index”
 - Location
 - Vehicles
 - Property
 - Events.
- Deployed to more users.
- Agency system administrator screens.



CISS — Success Metrics

Strategic Budget



Operational Budget





CISS — Business Management

Field Visits to Observe Agency Business Processes

- Division of Public Defender Services: New Britain, Derby & Hartford courts.
- Division of Criminal Justice: New Britain, Meriden & Waterbury courts.
- To be scheduled: DMV, DOC, BOPP, CSSD.

RMS Vendors

- Validated CT RMS & CAD contract end dates.

Data Mapping Security for Agency Source System Fields

- Data mapping security was defined based on GFIPM model.
- Meetings were held with Agencies to clarify GFIPM security questions.

CISS Screen Mock-Ups Review

- Consolidated feedback on basic search & advanced search screens.



CISS — Business Milestones

Business Tasks	October				November					December			
	5	12	19	26	2	9	16	23	30	7	14	21	28
Data Mapping Security	█	█											
Field Observation: DMV		█	█	█									
Field Observation: DOC					█	█	█						
Field Observation: BOPP					█	█	█						
Field Observation: CSSD								█	█	█			
CISS Wave Ø, v1: OBTS Search – Business Acceptance Testing										█	█		
CISS Wave Ø, v1: OBTS Search – User Acceptance Training & Testing											█	█	



CISS — Technology

- Agencies selected security models to integrate with CISS.
- Acquired equipment supporting development and production (storage, network, firewalls).
- Initiated development of CJIS Security, CJIS Access and FileNet (Electronic Content Management) Policies
 - DOJ/FBI CJIS 5.1, FEA, FIPS 140-2
- Acquired CONNX for data replication and integration.
- Replicated OBTS database via CONNX.
- Evaluated methodologies to integrate Agency data with CISS.
- Developed workshops for Agency stakeholders: Data Replication and Security; more to be scheduled.

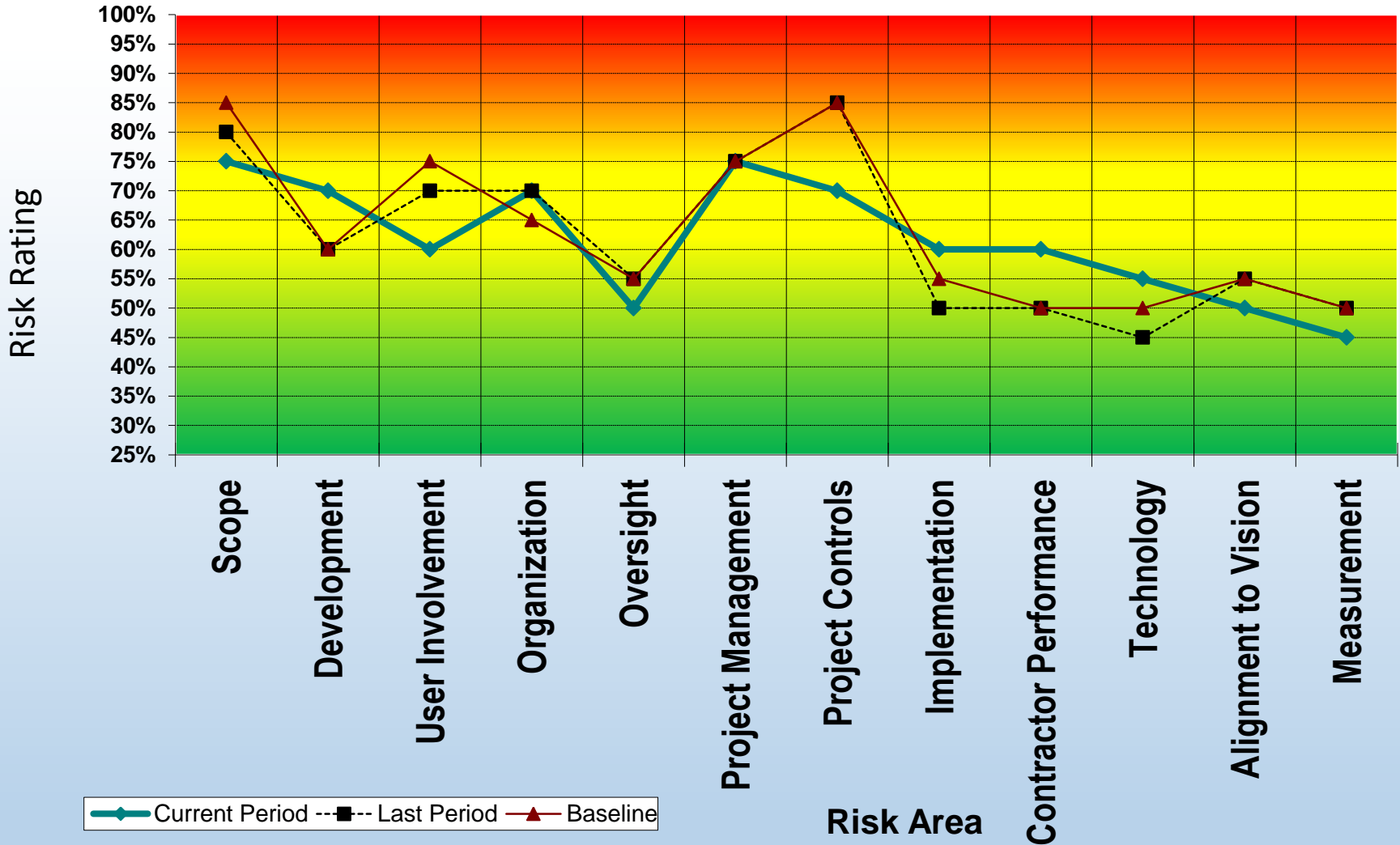


CISS — Technology Milestones

Phase Task	Aug	Sept	Oct	Nov	Dec	Jan	Feb	Mar
Order hardware/software	█	█						
Staffed technical development team	█	█	█	█	█	█	█	█
Staffing Application Manager & Microsoft Engineer			█	█				
Developing software development life cycle	█	█	█	█	█	█	█	█
Developing Service Level Agreement (SLA)	█	█	█	█				
Designed and developed CISS success metrics	█	█	█	█	█	█	█	█
Developing API Publishing Interface standards			█	█	█			
Gather IEPD data elements from agencies	█	█	█	█	█	█	█	█
Defined production architecture	█	█						
Defined storage requirements	█	█	█	█	█	█	█	█
Defined network/security requirements		█	█	█				
Install storage and network equipment		█	█	█	█	█	█	█
Acquired Public Certificate (WildCard SSL)			█					
Configure production environment		█	█	█	█	█	█	█
Implement workshops for Agency stakeholders	█	█		█		█	█	█
Develop CJIS Security Policy		█	█	█	█	█	█	█
Develop CJIS Access Policy				█	█	█		



CISS — Quarterly IV&V Report for 3rd Quarter 2012



Nastel Performance Monitoring

October 18, 2012

Nastel Performance Monitoring Tool

- What is Nastel? A performance monitoring software tool known as “middleware”
- How is CJIS using Nastel software? To maximize the effectiveness of our applications (OBTS, CIDRIS, and soon, CISS)
- What does it do?
 - Sifts through millions of messages and bits of information
 - Processes the information to detect potential problems
 - Performs proactive monitoring and notification
 - Recognizes and analyzes issues in real-time

What is Nastel?

- Nastel is an **Application Performance Monitoring tool**. It measures, monitors, and reports on business processes, applications, and IT infrastructure.
- It provides:
 - **Detailed transaction** performance information
 - **Real-time analytics** through a built-in Complex Event Processing (CEP) engine that supports de-duplication, suppression of alerts, and avoidance of false-positives;
 - **In-depth reporting** abilities;
 - **Automatic “stitching” capability** – it can track business transactions across multiple technologies, end-to-end across Web and legacy tiers: Java, .NET, WMQ and CICS.

How Is CJIS Using Naste!

- **Health-Check Dashboard**
 - Rules-based business views.
 - Display information based on criminal justice use activities.
- **Automated Monitoring**
 - Monitors events and metrics in real-time.
 - Provides customizable notifications, alerts, and automated actions.
- **Operations Forecasting**
 - Analyzes trends in performance thresholds and baselines.
 - Improves visibility and capacity planning.

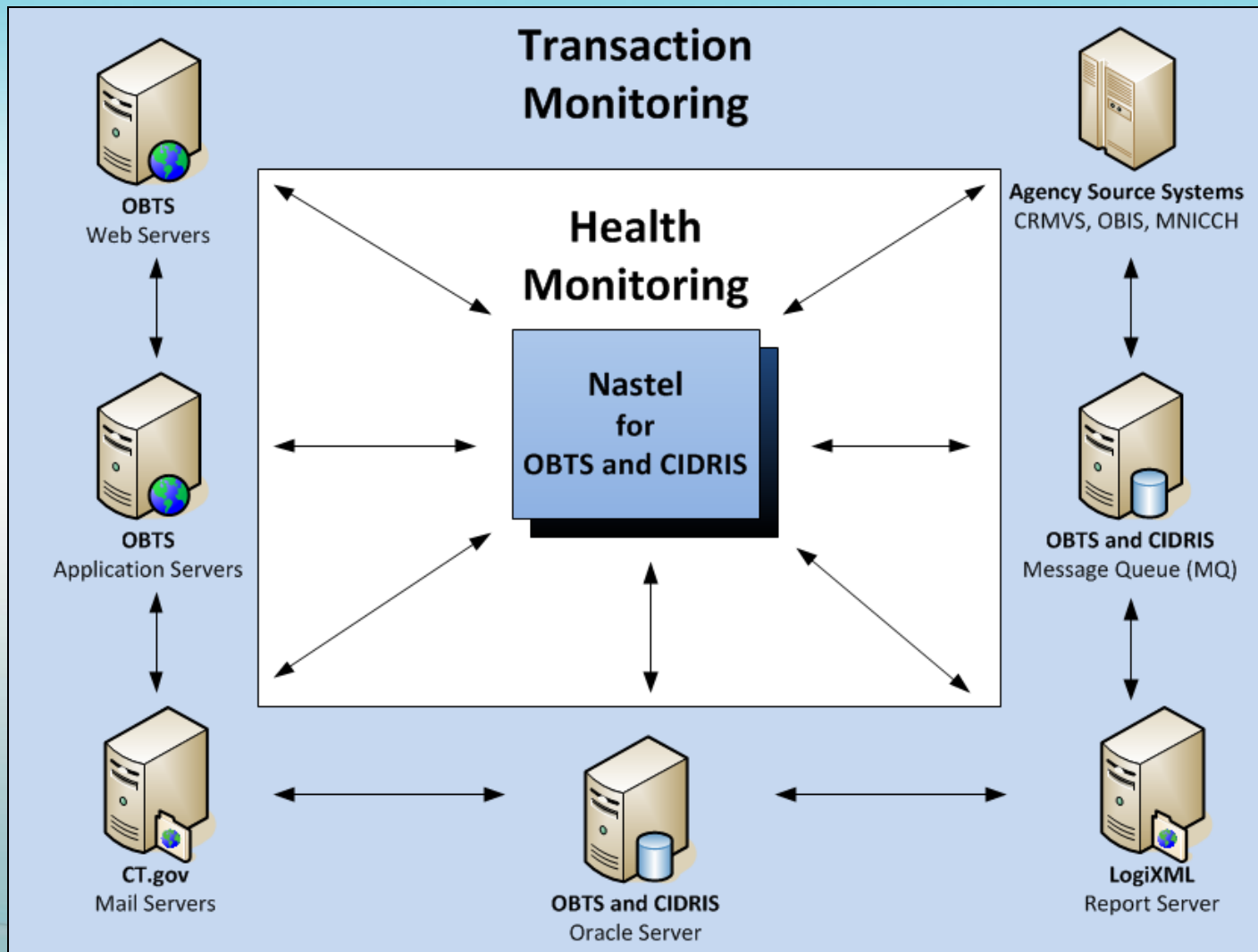
What does Nastel do?

- Nastel creates reports by collecting and monitoring application and system events in real time.
- Nastel performs *Predictive Analytics by using Statistical Forecasting*.
- *Predictive Analytics* allows the operations team to prevent problems from occurring.

The Value of Nastel

- Improve Public Safety: Nastel will be a vital partner in maximizing the performance of OBTS, CIDRIS, and CISS to identify *potential* problems before users do.
- Maximize our ROI: Nastel will amplify the benefits of CISS, as it will be deployed as CISS is *being built*.
- Save \$\$: Using Nastel will reduce costs by:
 - Eliminating the need for more technical support staff
 - Preventing costly downtime issues.

Current Nastel Monitors



The “To Be” Model of CISS & Nastel:

Nastel will monitor all information coming into CISS



Nastel Demonstration

October 18, 2012



Appendix: Acronyms

AFIS = Automated Fingerprint Identification system
AST = Application Support System
BEST = Bureau of Enterprise Systems and Technology
BICE = Bureau of Immigration and Customs Enforcement
BOPP= Board of Pardons and Paroles
CAD = Computer Aided Dispatch
CCH= Computerized Criminal History (DESPP)
CIB = Centralized Infraction Bureau (Judicial)
CIDRIS = Conn. Impaired Driver Records Information System
CISS = Conn. Information Sharing System
CIVLS = CT Integrated Vehicle & Licensing System
CJIS = Criminal Justice Information System
CJPPD = Criminal Justice Policy Development and Planning Division
CMIS = Case Management Information System (CSSD)
COLLECT = Connecticut On-Line Law Enforcement
Communications Teleprocessing network
CPCA = Conn. Police Chiefs Association
CRMVS = Criminal and Motor Vehicle System (Judicial)
CSSD = Court Support Services Division (Judicial)
DCJ = Division of Criminal Justice
DAS = Dept. of Administrative Services
DESPP = Dept. of Emergency Services & Public Protection
DEMHS = Dept. of Emergency Management & Homeland Security
DMV = Dept. of Motor Vehicles
DOC = Department of Correction
DOIT = Dept. of Information Technology
DPDS = Div. of Public Defender Services
IST = Infrastructure Support Team
JMI = Jail Management System
JUD = Judicial Branch
LEA = Law Enforcement Agency
LAW = Local Law Enforcement (e.g., DPS, CPCA)
LIMS = State Crime Laboratory Database
MNI = Master Name Index (DESPP)

OBIS = Offender Based Information System (Corrections)
OBTS = Offender Based Tracking System
OCPD = Office of Chief Public Defender
OVA= Office of the Victim Advocate
OVS = Office of Victim Services
RMS = Records Management System
OSET = Office of Statewide Emergency Telecommunications
POR = Protection Order Registry (Judicial)
PRAWN = Paperless Re-Arrest Warrant Network (Judicial)
PSDN = Public Safety Data Network
SCO= Superior Court Operations Div. (Judicial)
SOR = Sex Offender Registry (DESPP)
SPBI = State Police Bureau of Identification (DESPP)
SLFU= Special Licensing of Firearms Unit (DESPP)

Technology Related

ADFS = Active Directory Federated Services
COTS = Computer Off The Shelf (e.g., software)
ETL = Extraction, Transformation, and Load
FEA = Federal Enterprise Architecture
FIM = Forefront Identity Manager (Microsoft)
FIPS = Federated Information Processing Standard
GFIPM = Global Federated Identity & Privilege Management
IEPD = Information Exchange Package Document
LAN = Local Area Network
PCDN = Private Content Delivery Network
POC = Proof of Concept
RDB = Relational Database
SAN = Storage Area Network
SDLC = Software Development Life Cycle
SOA = Service Oriented Architecture
SQL = Structured Query Language