



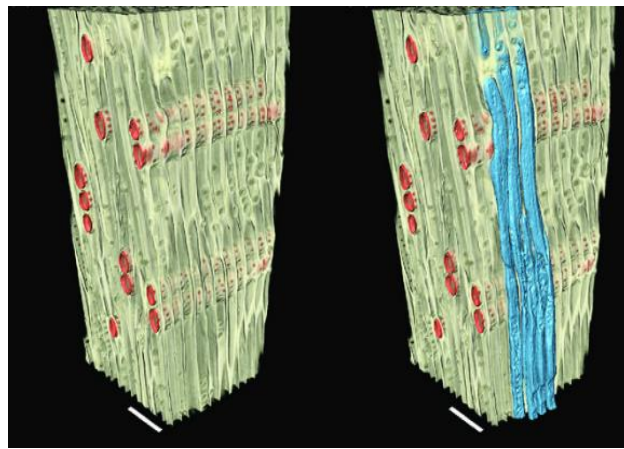
# CAES

The Connecticut Agricultural Experiment Station

*Putting Science to Work for Society since 1875*

## CAES SEMINAR SERIES

### “Using 3D X-ray Imaging to Study the Vulnerability of Plant Vascular Systems to Drought and Pathogens”



#### **Dr. Craig Brodersen**

Assistant Professor of Plant Physiological Ecology  
Yale School of Forestry & Environmental Studies

**Wednesday, May 10, 2017**

12:00 noon to 1:00 p.m.

Food and coffee will be available at 11:45 a.m.

**Jones Auditorium**

**The Connecticut Agricultural Experiment Station  
123 Huntington Street, New Haven, CT**